



Accessing Nokia 3100b DC Input

The DC input of the Nokia 3100b is where the...

Written By: Sterling Fuentes



INTRODUCTION

The DC input of the Nokia 3100b is where the cell phone's charger plugs in to. This guide shows you how to access the input and replace it if it has become damaged.



TOOLS:

[Tournevis Torx T6](#) (1)

[Pincettes de précision](#) (1)

Step 1 — Battery



- Make sure your phone is turned off.

Step 2



- Press the button on the back of the phone and slide the back panel off.
- Remove the battery by pulling it from the phone.

Step 3 — SIM Card



- Gently pull back the small metal frame holding the SIM card into place, and lift open the frame.

Step 4



- Retrieve your SIM card.

Step 5 — Accessing Nokia 3100b DC Input



- Separate the front cover from the base.

Step 6



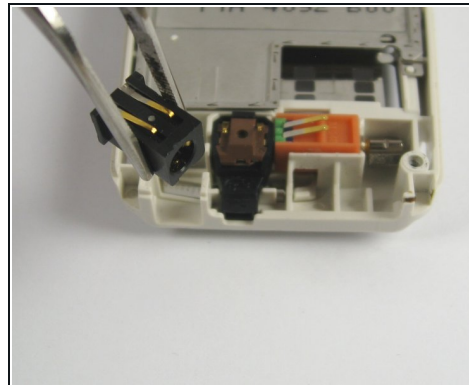
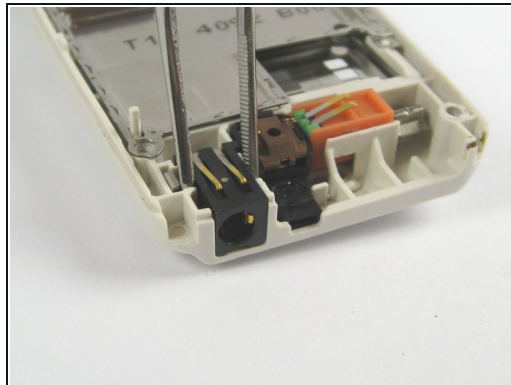
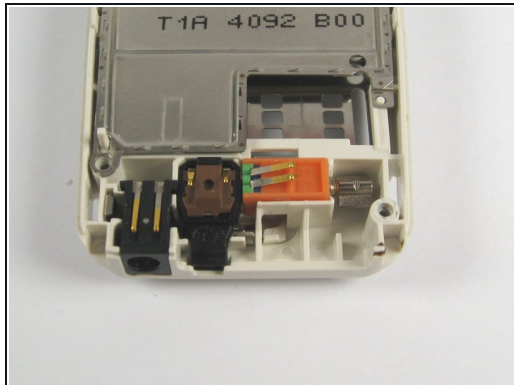
- Using a T6 Torx screwdriver, remove the screws from the screen assembly.

Step 7



- Separate the screen assembly from the base.

Step 8



- Use a pair of tweezers to remove the DC input from the base.

To reassemble your device, follow these instructions in reverse order.