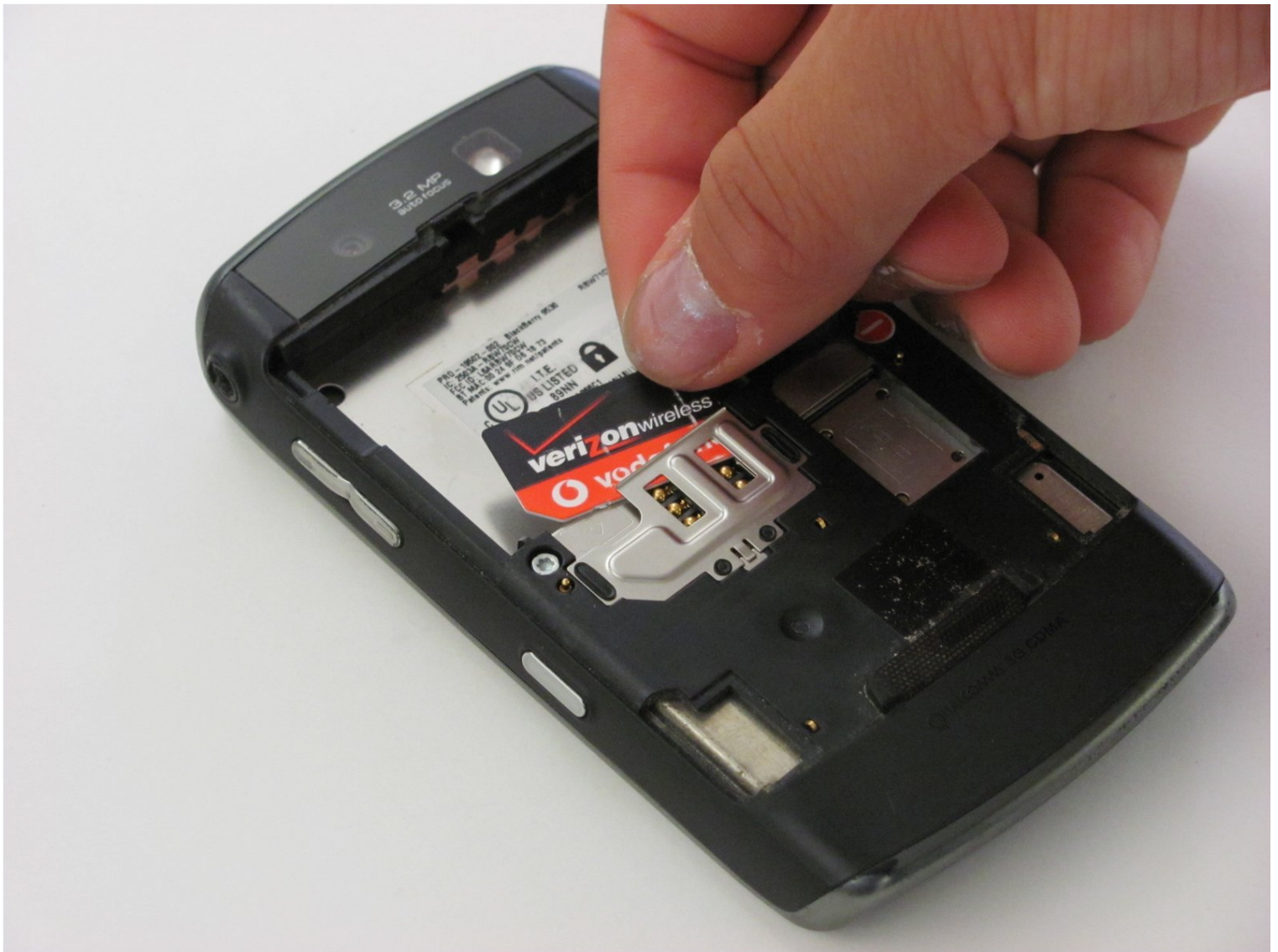




Blackberry Storm 9530 SIM Card Replacement

This replacement guide will walk you through...

Written By: melanie lim



INTRODUCTION

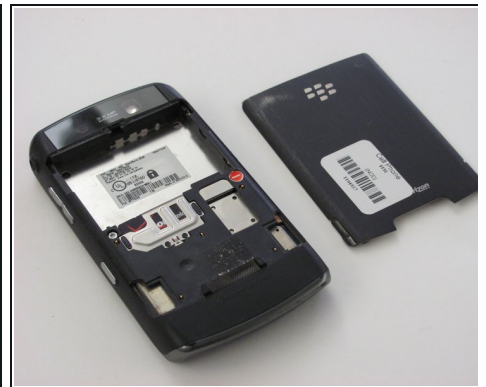
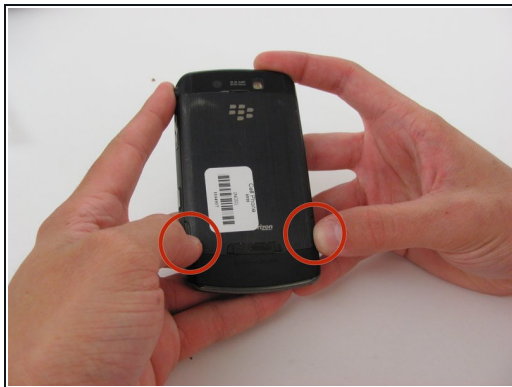
This replacement guide will walk you through replacing your SIM card. Listed tools are recommended; however, they are not required.

TOOLS:

[iFixit Opening Tool](#) (1)

[Spudger](#) (1)

Step 1 — Back Cover Removal



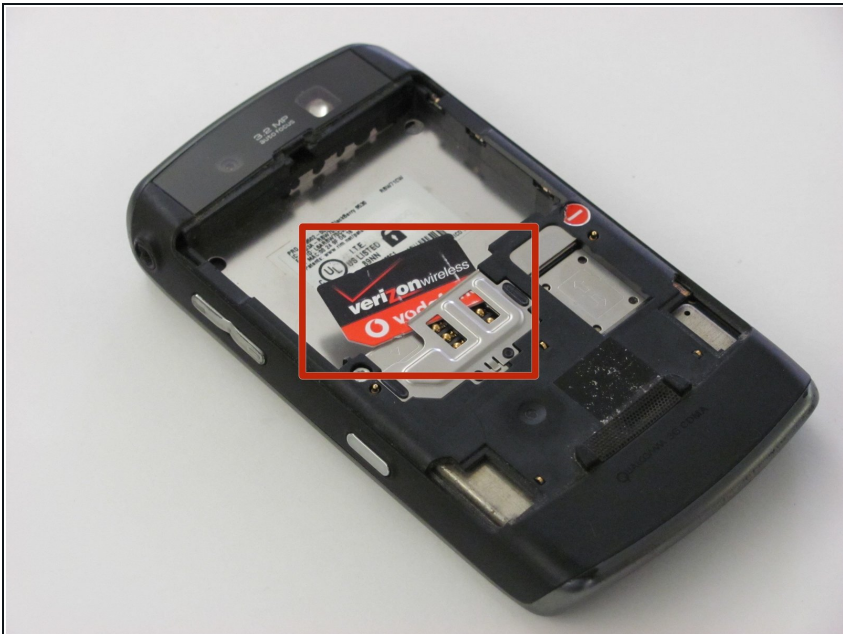
- Locate the two switches toward the bottom corners of the device's back cover.
- Use your thumbs or fingers to push the two switches forward at the same time and detach the back cover from the device.
- Check to make sure the back cover has fully detached from the device. You should be left with two separate pieces: the back cover, and the device with exposed internal hardware.

Step 2



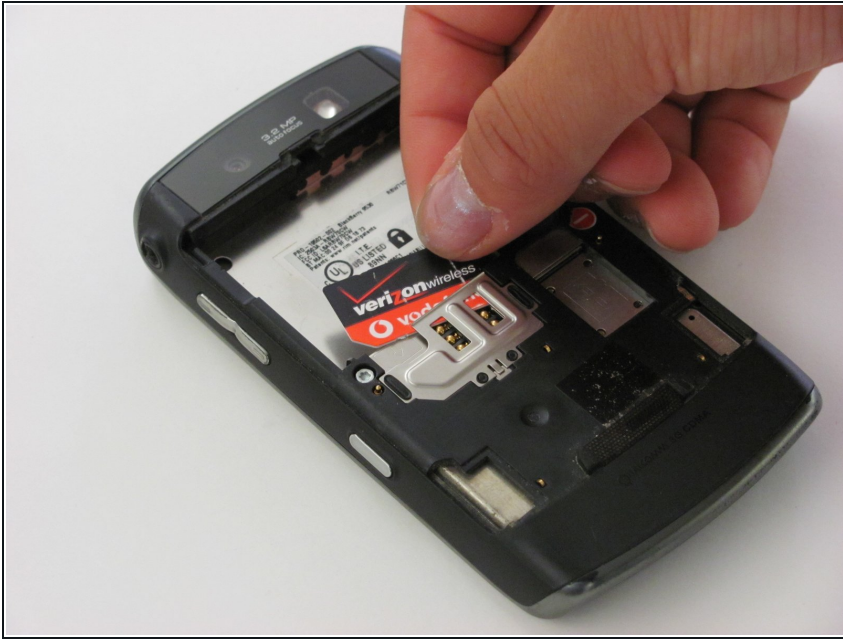
- Identify that the battery is visible once the back cover has been removed, and locate the battery in the rectangular-shaped top half of the device.
- Pry apart the battery and back of the device using the flat end of your spudger tool or using your finger if you do not have a spudger.
- ❗ Your battery has a specific orientation resembling a horizontal rectangle. Make sure the gold colored leads are aligned with the gold colored strips on your battery before reassembling.

Step 3 — SIM Card



- Locate the SIM card once the battery has been removed. The SIM card is typically located in the center of the phone, and it is secured by a metal tray.

Step 4



- Remove the SIM card carefully by sliding it upwards out of the metal tray. No tools are needed for this step.
- ❗ Your SIM card has a specific orientation to follow when it is replaced. Make sure the gold colored leads are aligned with the gold colored strips in the SIM card tray before reassembling.

To reassemble your device, follow these instructions in reverse order.