



Asus W2W-A1 Keyboard Replacement

Replace a broken or damaged keyboard with a new one.

Written By: Joe Redfearn





TOOLS:

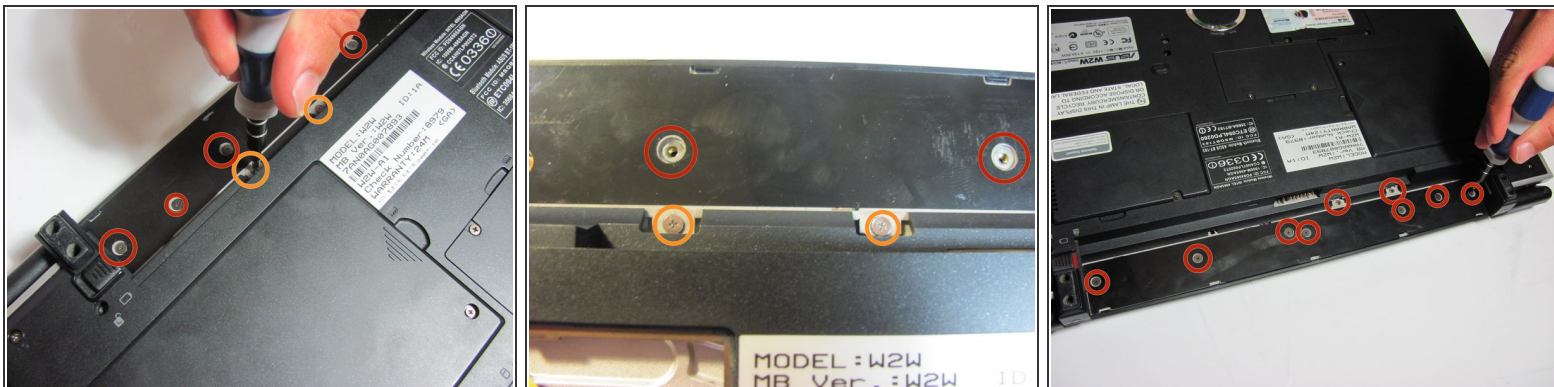
- [Spudger](#) (1)
- [Phillips #0 Screwdriver](#) (1)



PARTS:

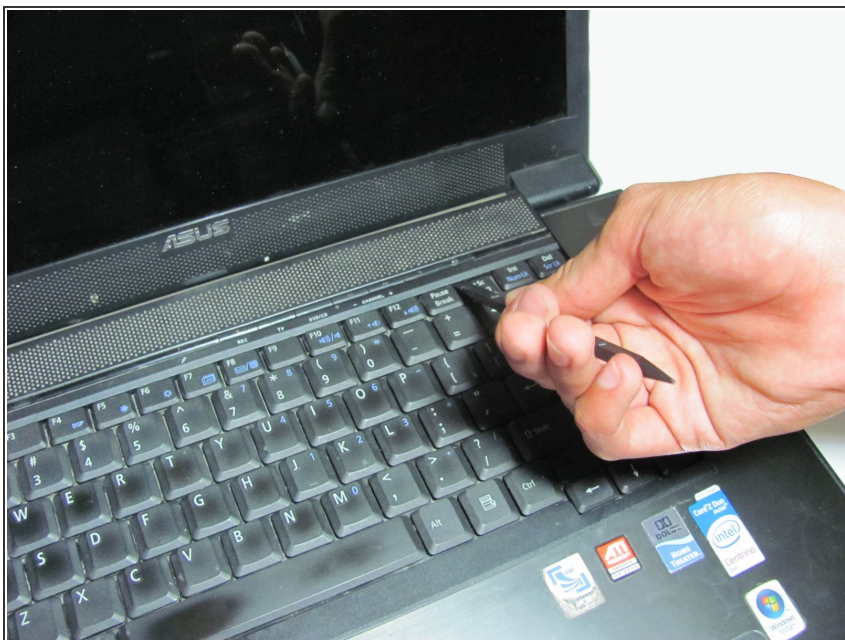
- [Keyboard](#) (1)

Step 1 — Keyboard



- Remove the battery, then unscrew the 7 3 mm Phillips screws behind the battery. Make sure they go in separate, organized piles.
- Unscrew the 2 4 mm Phillips head screws by the battery.

Step 2



- Remove the panel above the keyboard with a plastic spudger.

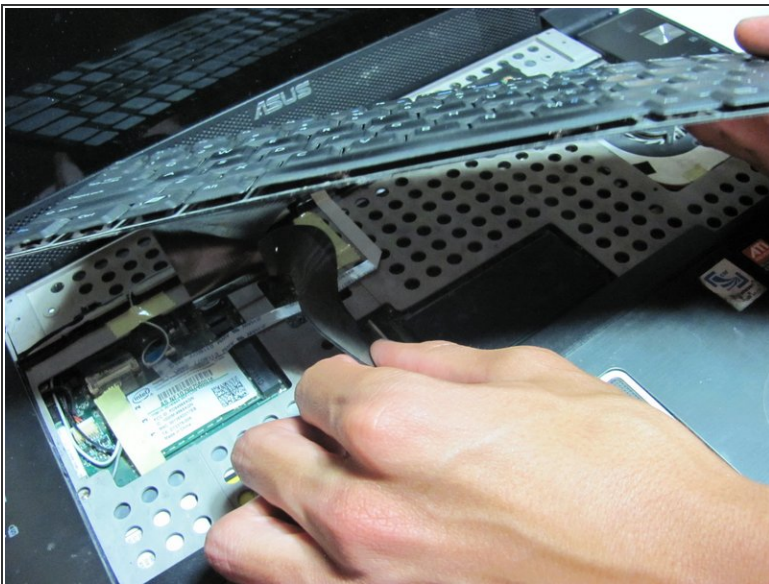
Step 3



- Once the panel is removed, use the spudger to pry out the keyboard.

⚠ Do not fully remove, for the keyboard is still attached to the ribbon cable.

Step 4



- Detach the ribbon cable from the keyboard by pulling the end of the ribbon cable that is attached inside of the laptop.

⚠ Be sure to detach from the root rather than from near the middle. It should slide out with ease.

- Now you can fully remove the keyboard from the laptop.

This document was generated on 2020-11-28 03:18:31 AM (MST).

To reassemble your device, follow these instructions in reverse order.