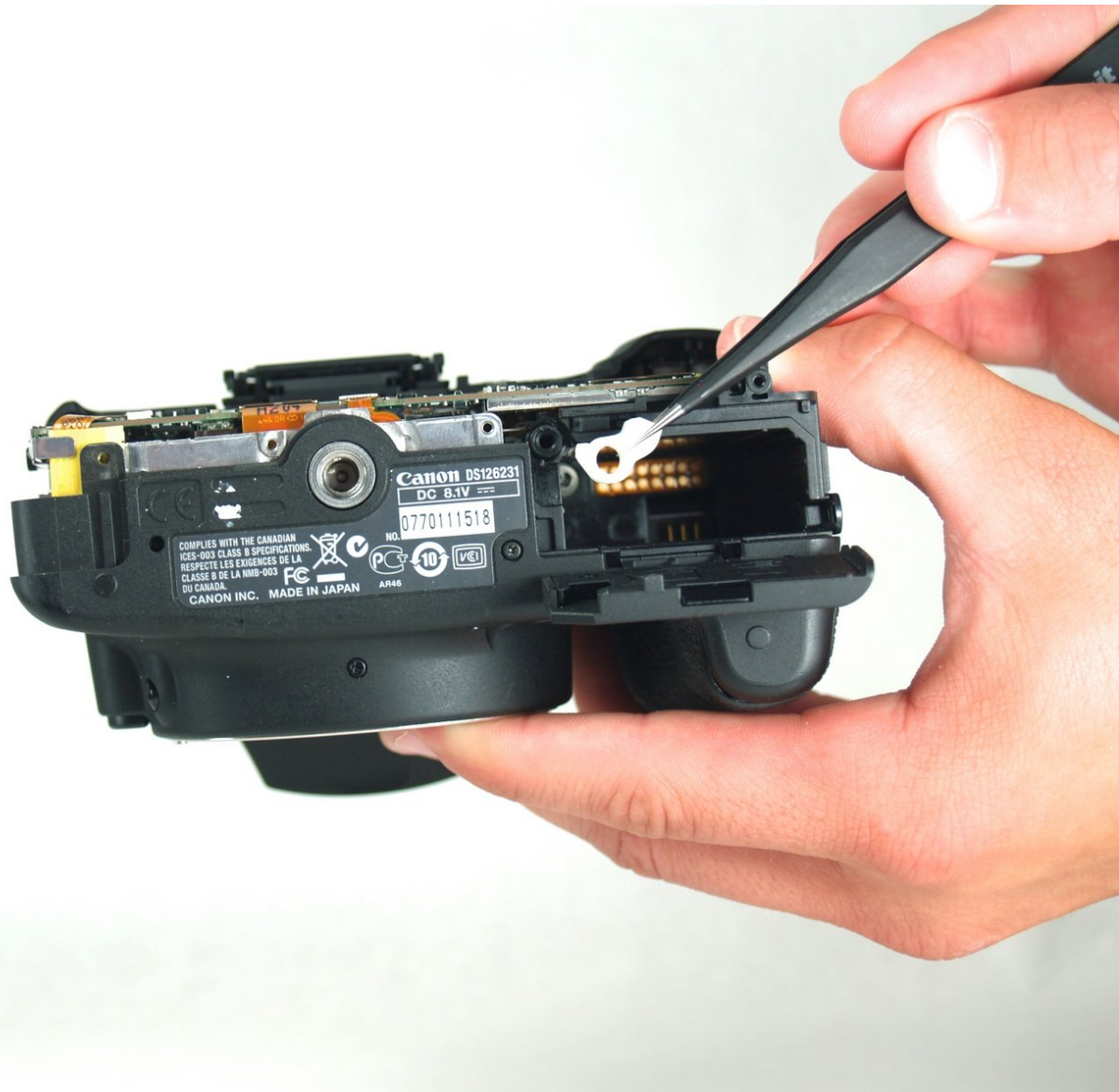




Canon EOS Rebel T1i Camera Battery Notch Replacement

This guide shows how to replace the battery notch (white switch for the battery).

Written By: Jonathan Lin



INTRODUCTION

If your battery notch is stuck, or even broken, then follow this guide to replace the notch. All it takes is some hard work, a few tools, and the right attitude.

TOOLS:

- [Phillips #00 Screwdriver](#) (1)
- [Tweezers](#) (1)
- [iFixit Opening Picks set of 6](#) (1)
- [Plastic Cards](#) (1)

Optional

Step 1 — Battery Notch



- Locate the side of camera with the HDMI port.
- Unscrew the 7mm with a #00 Phillips screw driver.

Step 2



- Use your fingers to gently detach the plastic component from the camera

Step 3



- Unscrew the bottom three 4mm screws with a #00 Phillips screwdriver.

Step 4



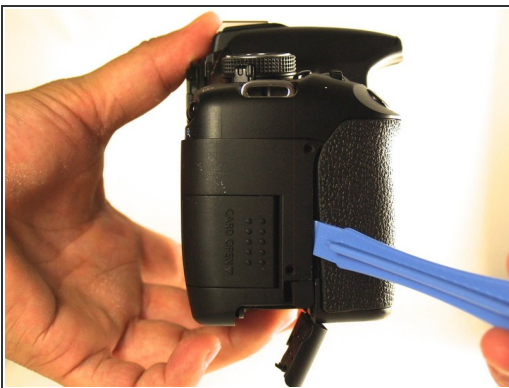
- Unscrew the inner 4mm screw with a #00 Phillips screwdriver.

Step 5



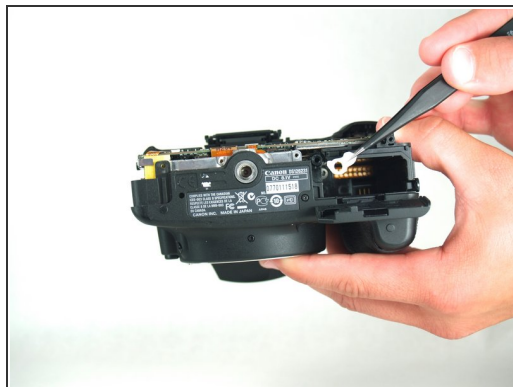
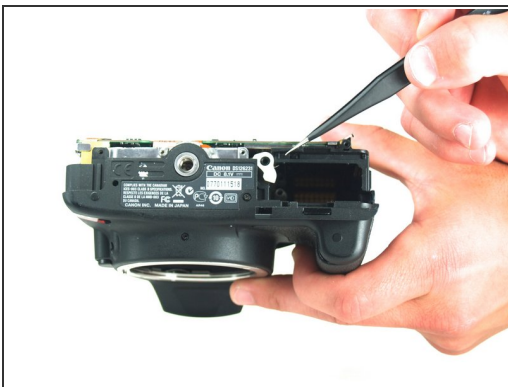
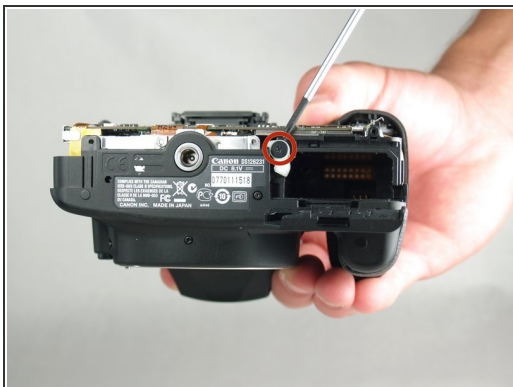
- Unscrew the top 7mm screw on the right side of the camera.
- Unscrew the bottom 4 mm screw on the right side of the camera.

Step 6



- Use the plastic opening tool to pry open the entire back panel.
- Use your fingers to pull off the back panel.

Step 7



- Now that the panel is off, unscrew the 9mm screw holding the battery notch in.
- Use the pliers (or your fingers) to take off the white notch.
 - ⚠ There is a spring underneath the battery notch. Do not lose this spring or let it fall off.

To reassemble your device, follow these instructions in reverse order.