



# Sony NEX-5R LCD Screen Replacement

Perhaps your LCD screen is scratched or damaged...

Written By: Emily Trujillo



# INTRODUCTION

Perhaps your LCD screen is scratched or damaged and needs replacing. This guide gives you directions on how to remove your LCD screen safely without damaging any of the device's sensitive components.

---

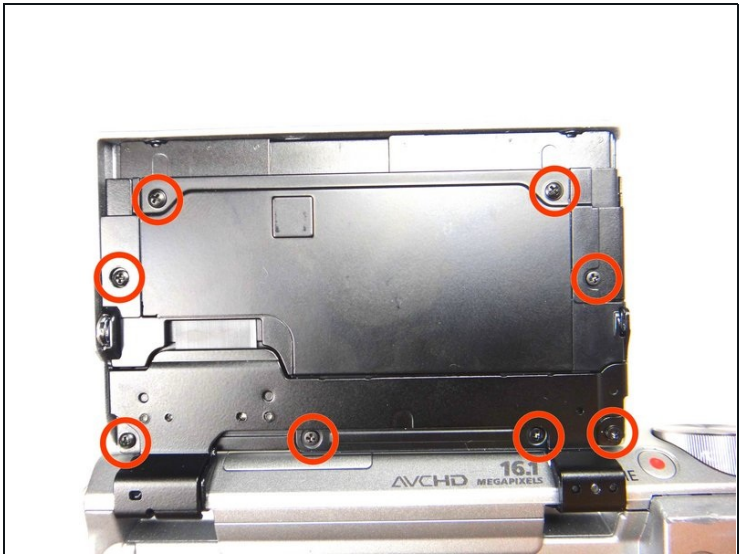
## TOOLS:

Phillips #00 Screwdriver (1)

Tweezers (1)

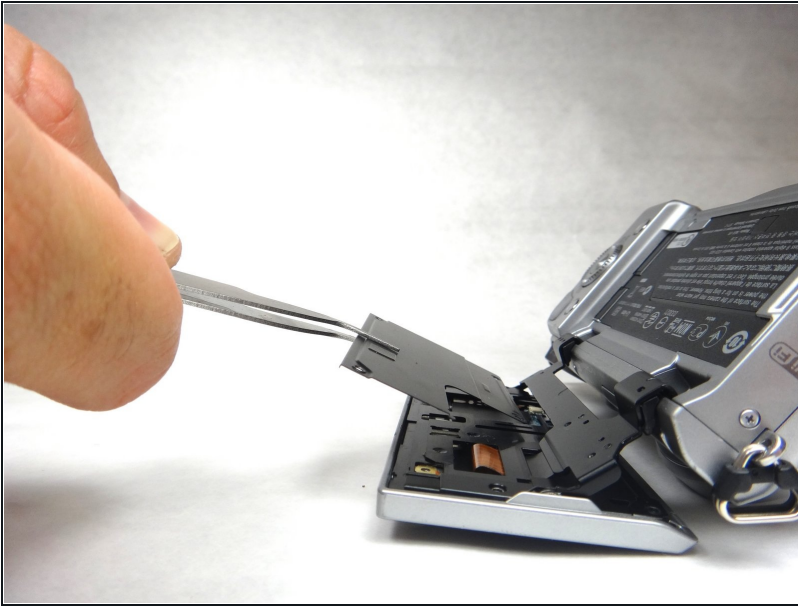
---

## Step 1 — LCD Screen



- Rotate screen to upper vertical position.
- Remove the 8 (1.0 mm) black screws from the screen backing with Phillips screwdriver.
- ① Make sure to keep track of these 8 screws. They are very small and easy to get lost.

## Step 2



- Remove black plate with tweezers. (Be careful not to lose the small square magnet sticking to the underside. It allows the auto rotation of the screen for selfies.)

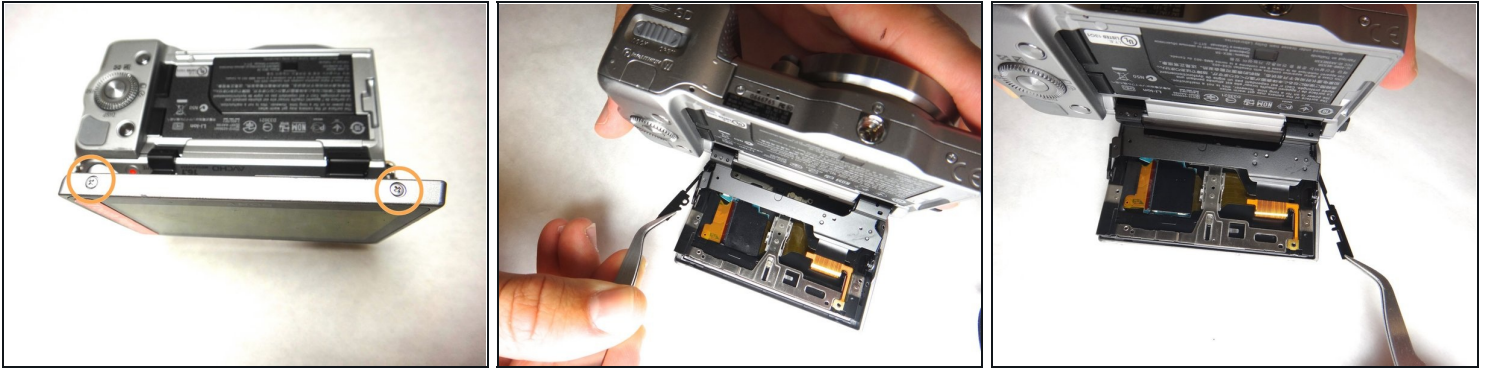
## Step 3



- Remove the second black metal plate covering with tweezers.

⚠ Be careful with this plate, its shape makes it delicate.

## Step 4



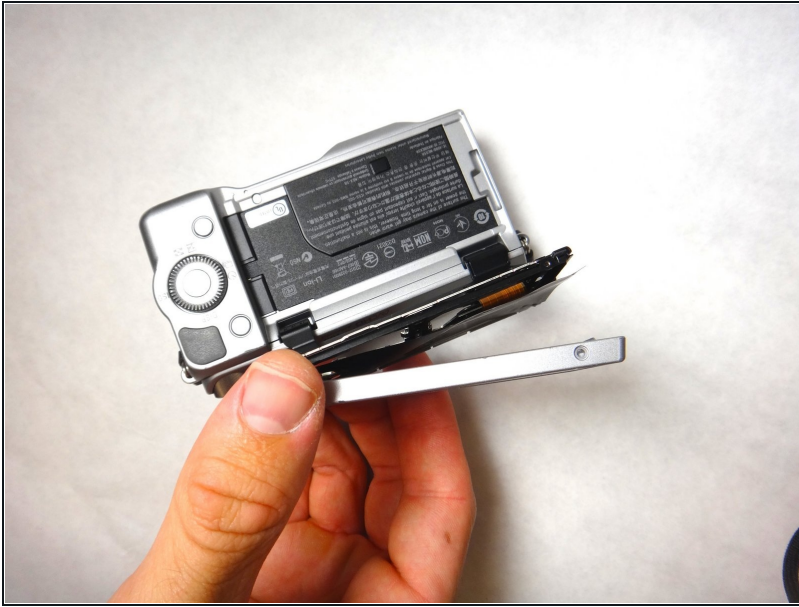
- After removing both plates, remove the 2 (1.75 mm) Phillips screws on the bottom of the LCD screen.
- Take off the 2 metal sliding side components. This will allow for us to slide off the screen.

## Step 5



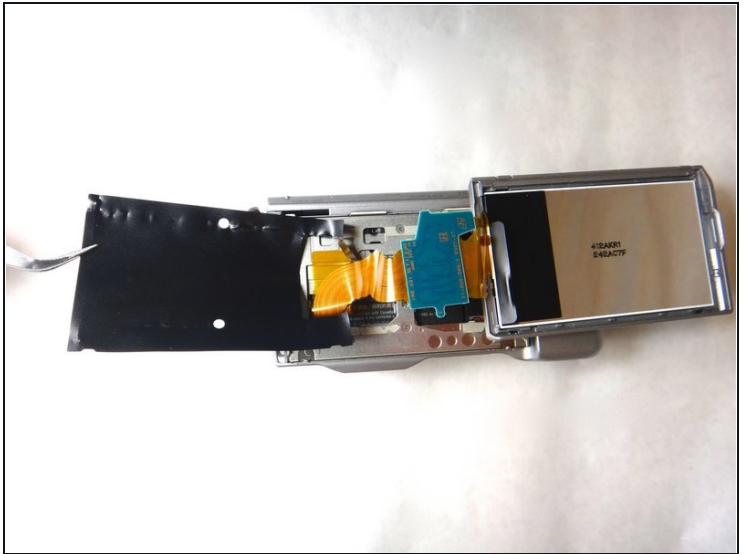
- Remove the blue square film covering the teal chip.

## Step 6



- Lift the screen away from the backing.

## Step 7



- Peel away the large rectangular black sheet with the tweezers.
- Rotate the sheet so it is to the opposite side of the screen.

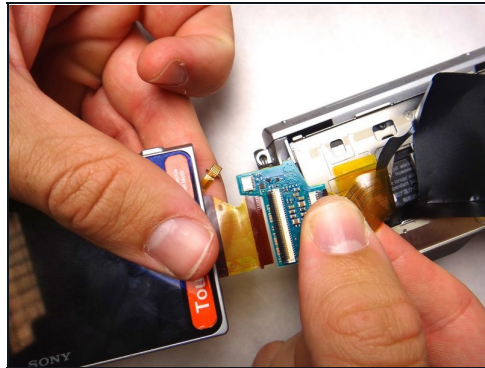
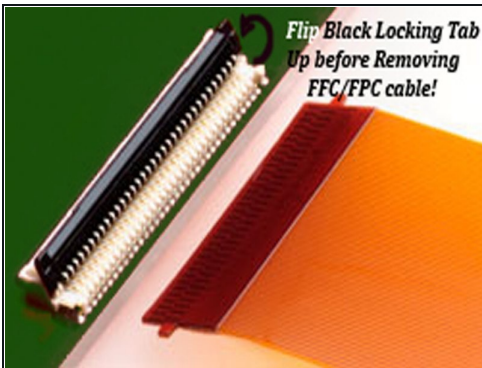
## Step 8



- Using the tweezers, gently pull the small orange tab away from the backing.

⚠ The orange taping is very fragile, so make sure not to tear it with the tweezers or rip it out of its socket.

## Step 9



- Use a spudger or plastic opening tool to flip the black locking tab up. Slide the cable straight out of its socket and remove the display.

## Step 10



- Some replacement LCD screens do not come with the plastic frame. The original frame is easily separated and reused. Push the LDC out of the frame from behind. This takes some force. Be careful not to break the frame.
- After separation, removed the sticky material between them and replaced it with double sided tape.
- On reassembly stick strips of the tape to the inside edges of the plastic frame and then trimmed them to fit with a Exacto knife.
- The small flexible cable must be folded around the inside edge of the plastic frame and then folded again to meet the connector. Follow the folds of the original cable.

---

To reassemble your device, follow these instructions in reverse order.