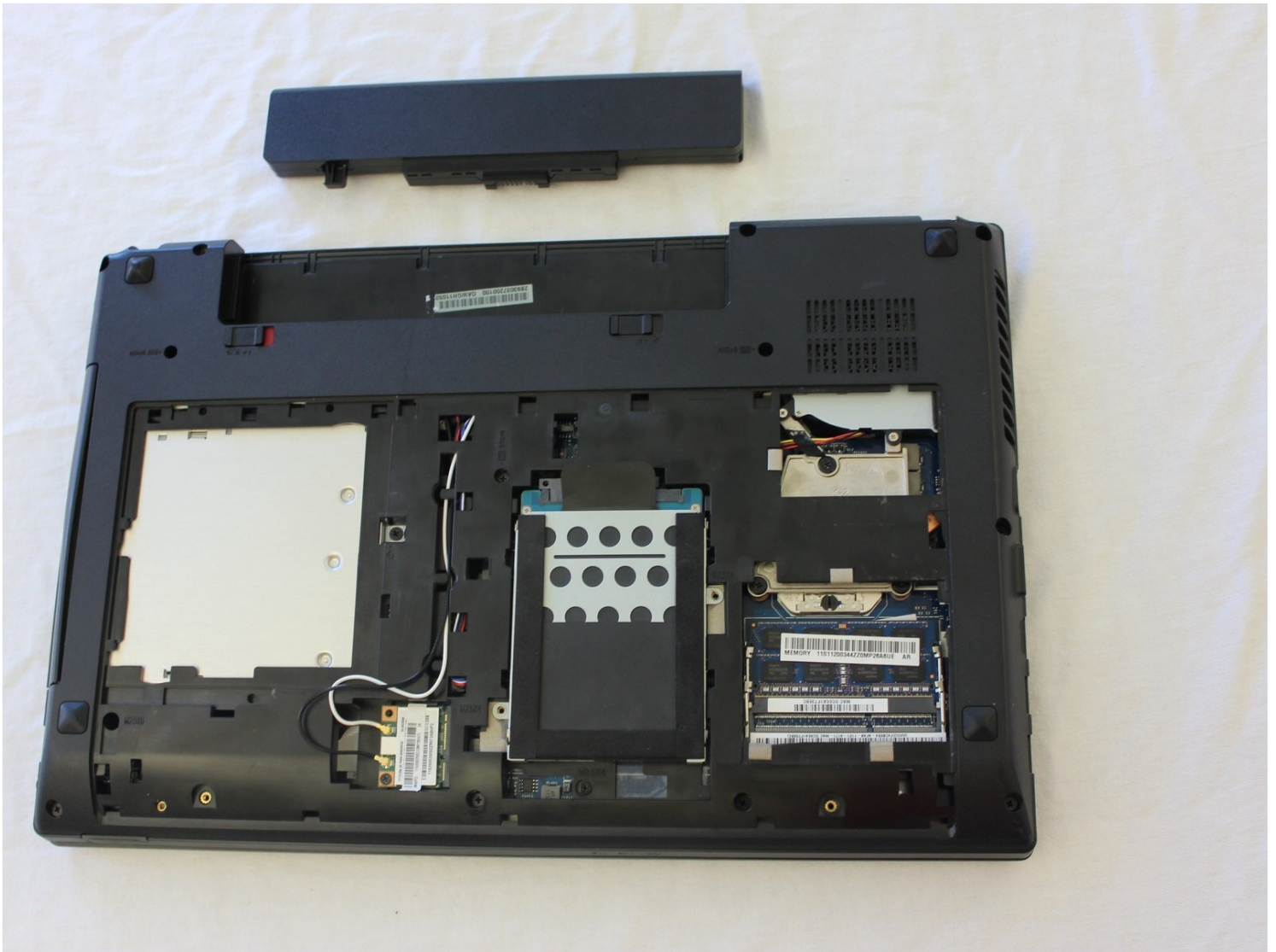




# Lenovo IdeaPad N586 Wifi card Replacement

Written By: Christopher



---

## TOOLS:

Phillips #1 Screwdriver (1)

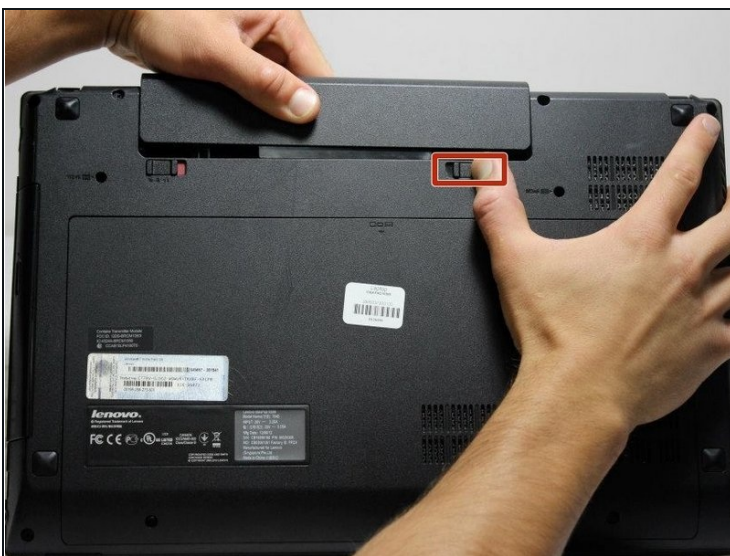
---

### Step 1 — Battery



- To unlock the battery, flip the laptop over so that the bottom is facing upward. Then unlock the left clip by pushing the clip to the left.

### Step 2



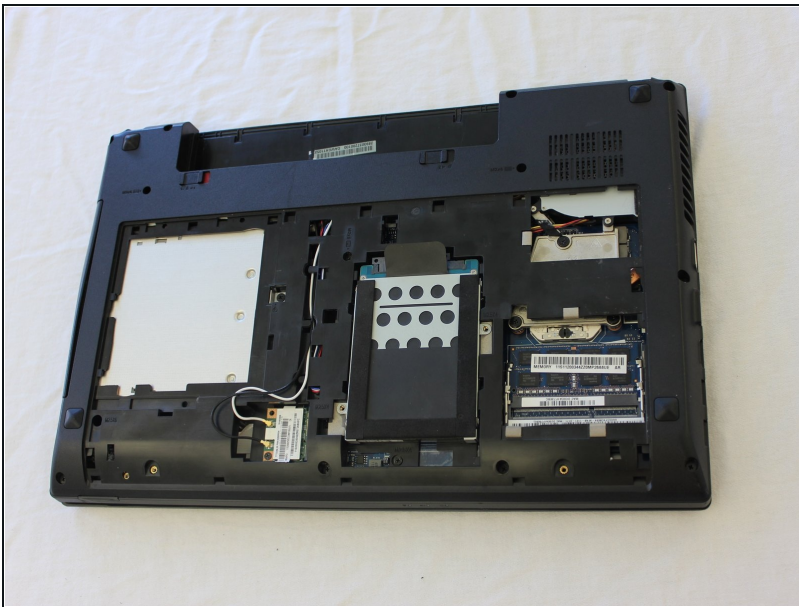
- Now push the right clip to the right and hold it while using your other hand to pull the battery out.

### Step 3 — Back Panel



- Remove the two screws highlighted.

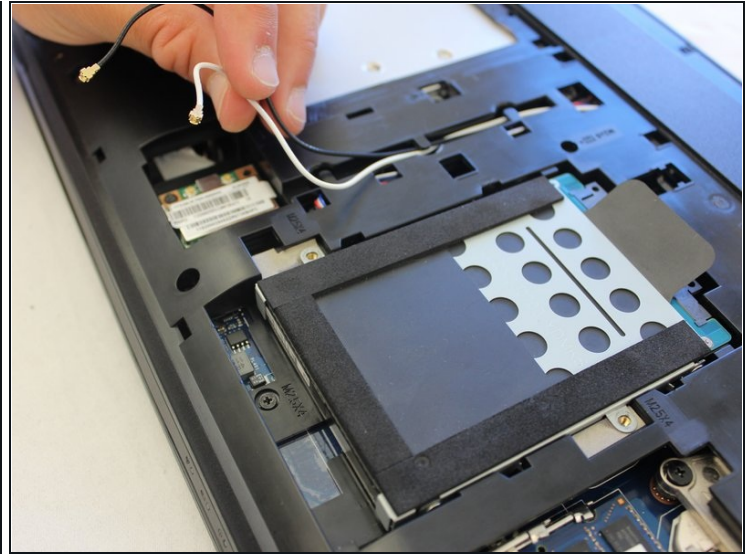
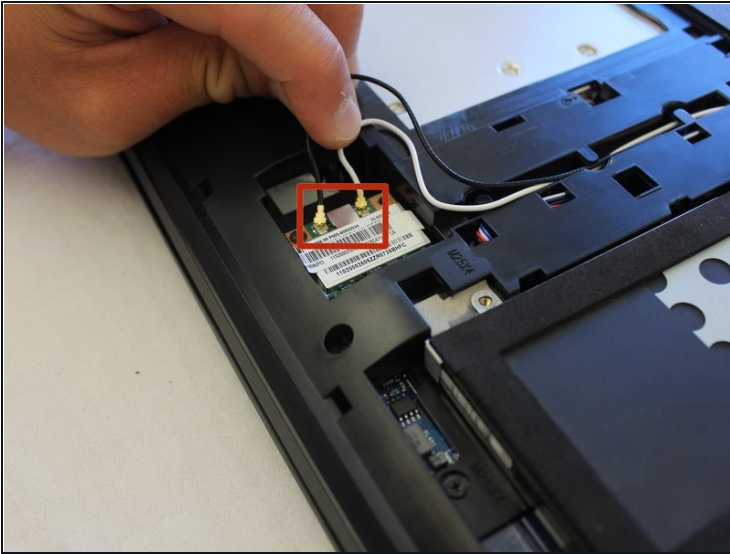
### Step 4



- This is the back of the laptop with the cover removed.

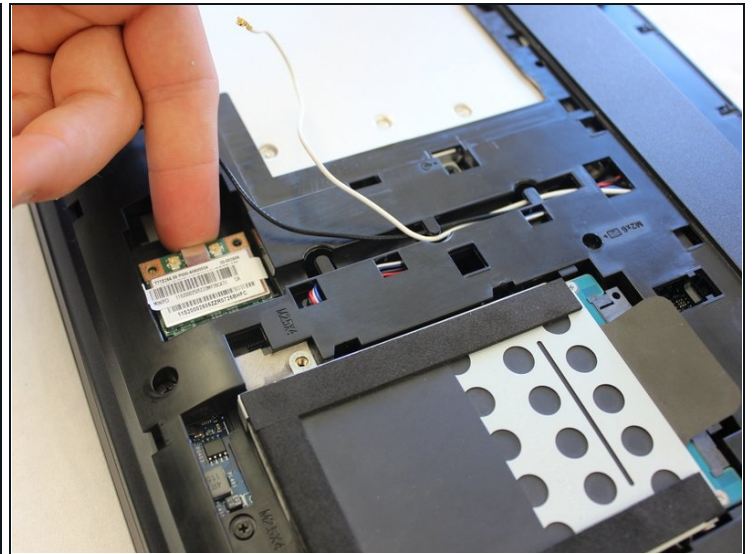
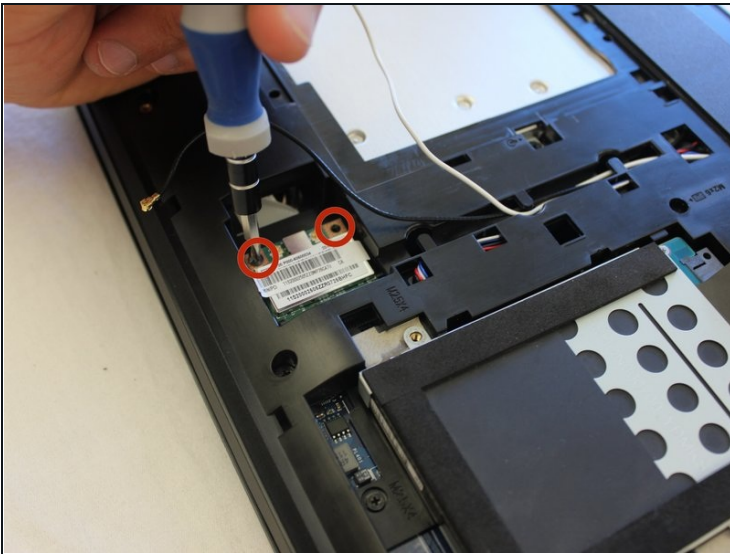


## Step 5 — Wifi card



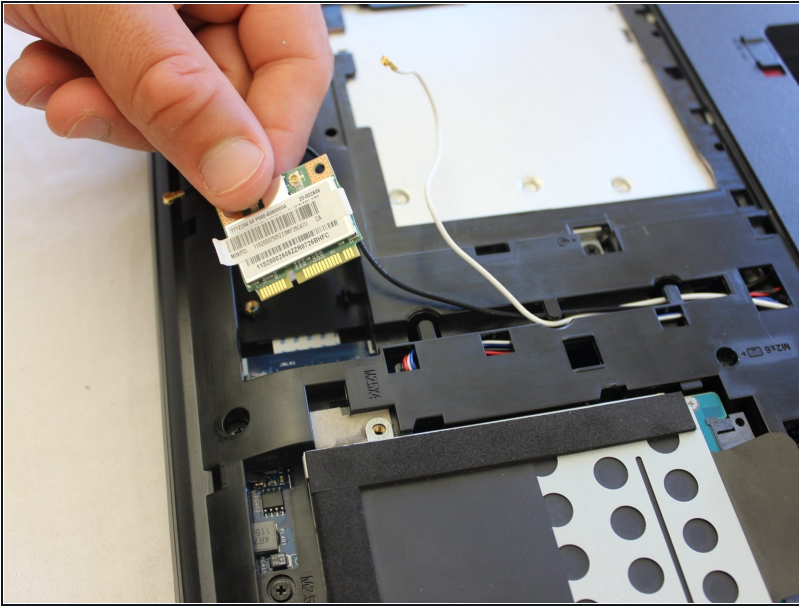
- Remove the white and black wires.

## Step 6



- Next, unscrew the wifi card

## Step 7



- Pull out the wifi card.

---

To reassemble your device, follow these instructions in reverse order.