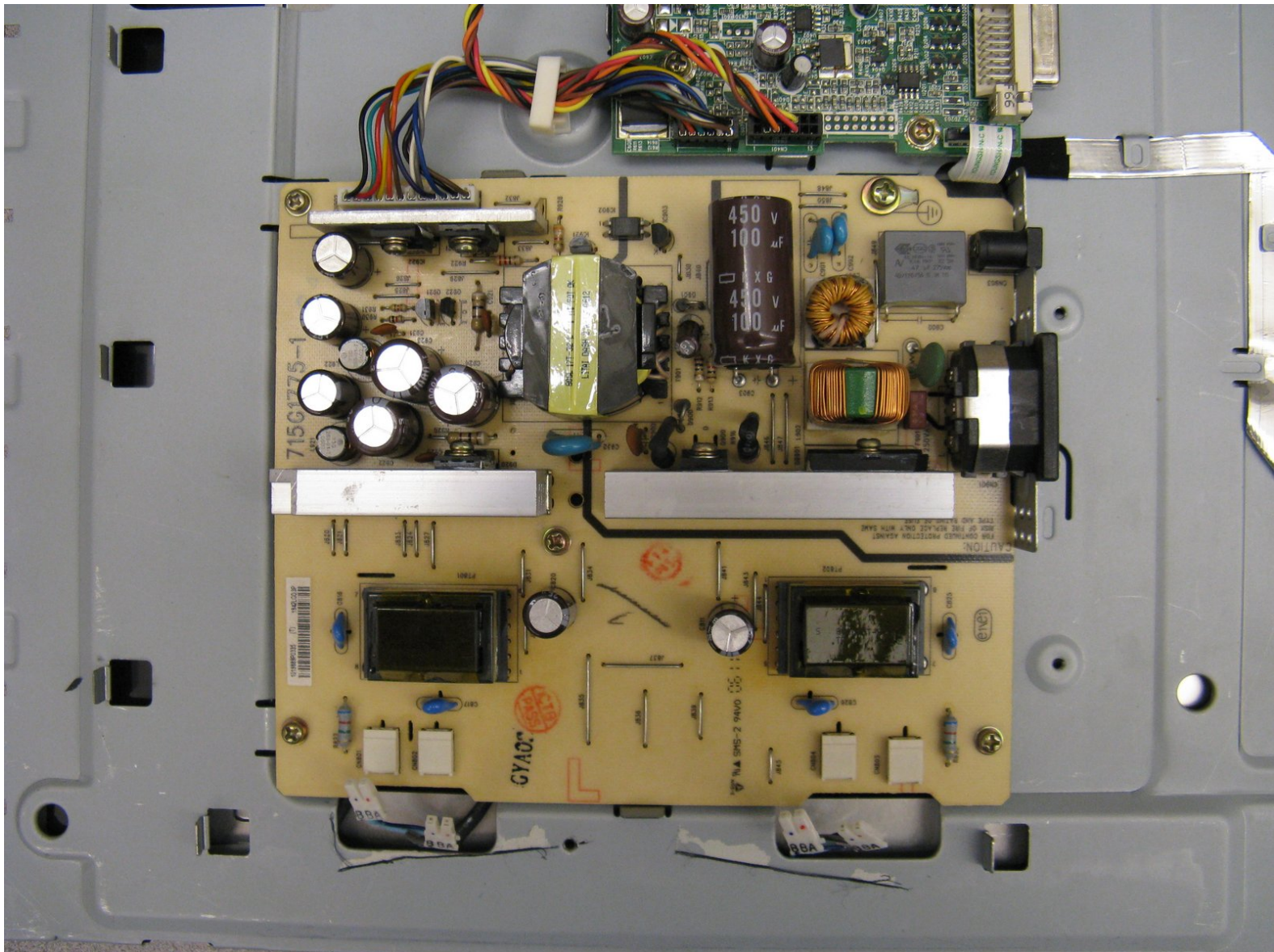




Dell 1907FPc Monitor Power Supply Replacement

Use this guide to replace a faulty power supply.

Written By: Geoff Wacker



INTRODUCTION

Following this guide involves completely disassembling the monitor. This process isn't terribly difficult, just time consuming.



TOOLS:

- [Spudger](#) (1)
- [Tweezers](#) (1)
- [Phillips #2 Screwdriver](#) (1)
- [5mm Nut Driver](#) (1)



PARTS:

- [Dell 1942LGD3P Power Supply](#) (1)

Step 1 — Power Supply



- Carefully place the monitor face down on a flat surface, being careful to protect the display.
- Remove the four 10 mm Phillips #2 screws from the back panel.

Step 2




- Flip the monitor back over, so that the display is facing you.
- Use a spudger to remove the front bezel by unsnapping it in a counter clockwise fashion, starting at the bottom right, and ending at the button panel.

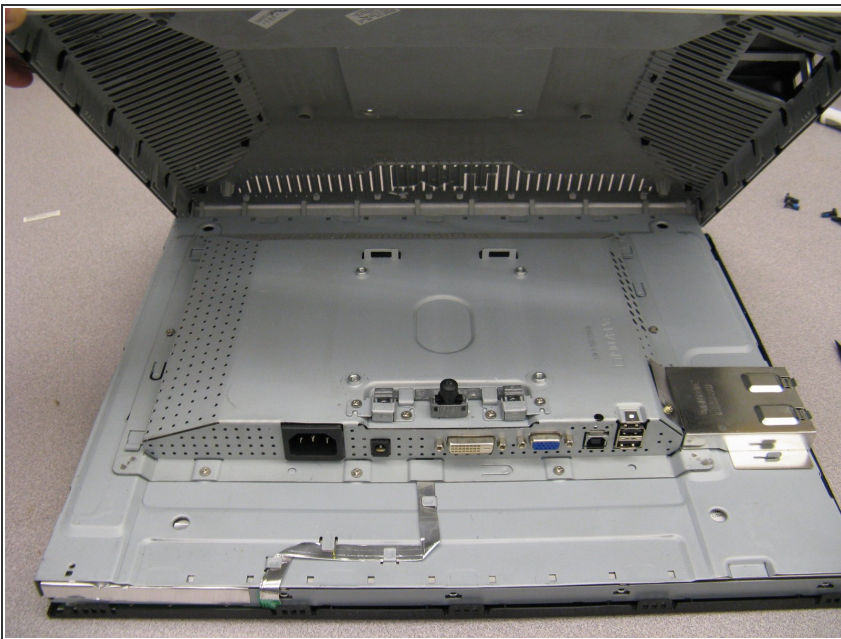
Step 3



- Slowly unsnap the bezel around the buttons.

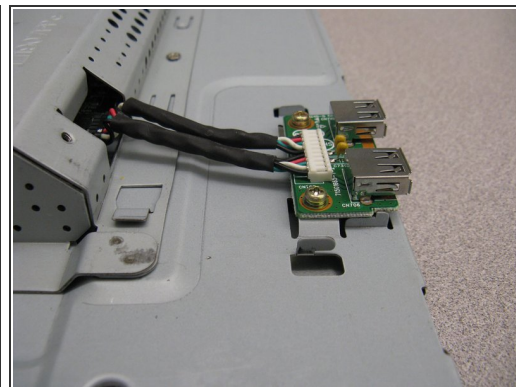
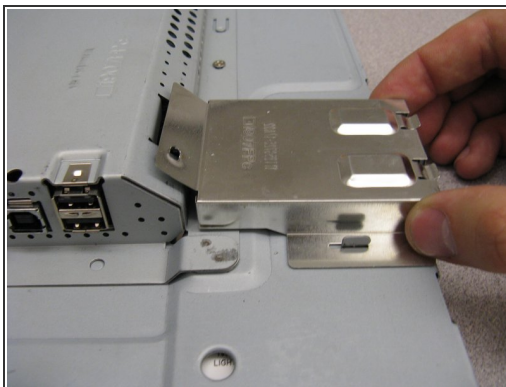
 Be careful to not fully remove the bezel here, because a ribbon cable attaches the buttons to the monitor.

Step 4



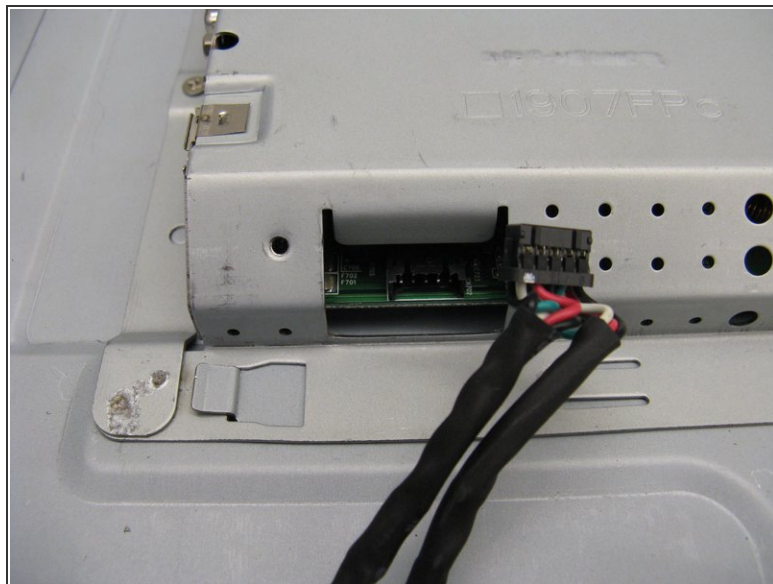
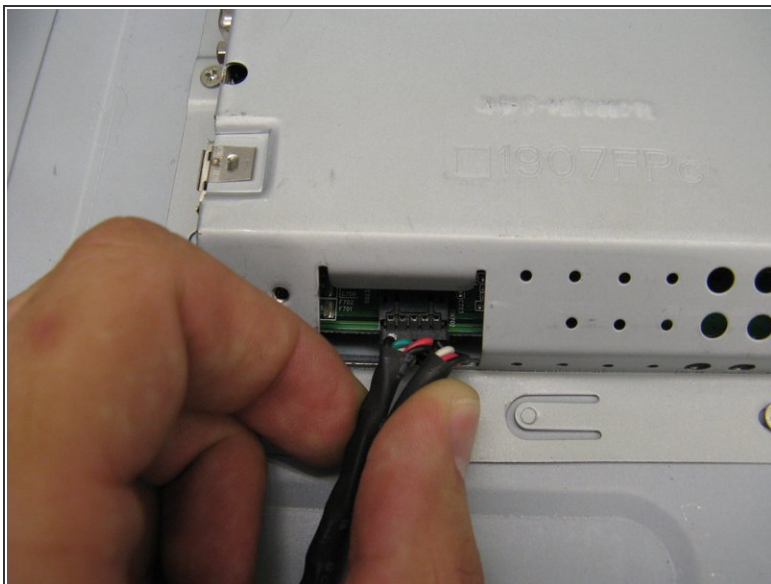
- Carefully flip the monitor back over, making sure to keep the front bezel in place.
- Lift the back cover off of the rest of the monitor.

Step 5



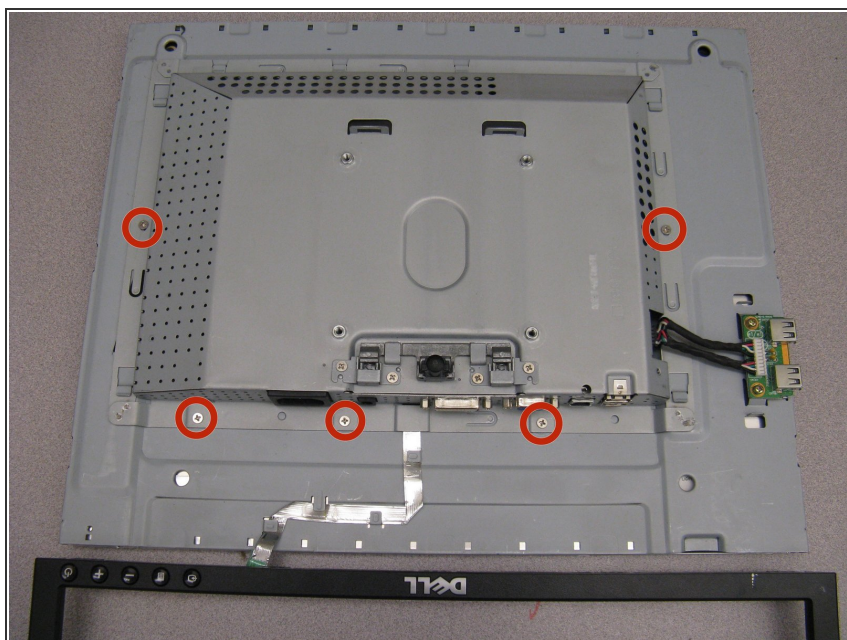
- Locate the USB port cover on the right hand side of the monitor.
- Remove the one 5 mm Phillips #2 screw.
- Remove the USB port cover by sliding it out and away from the monitor.

Step 6



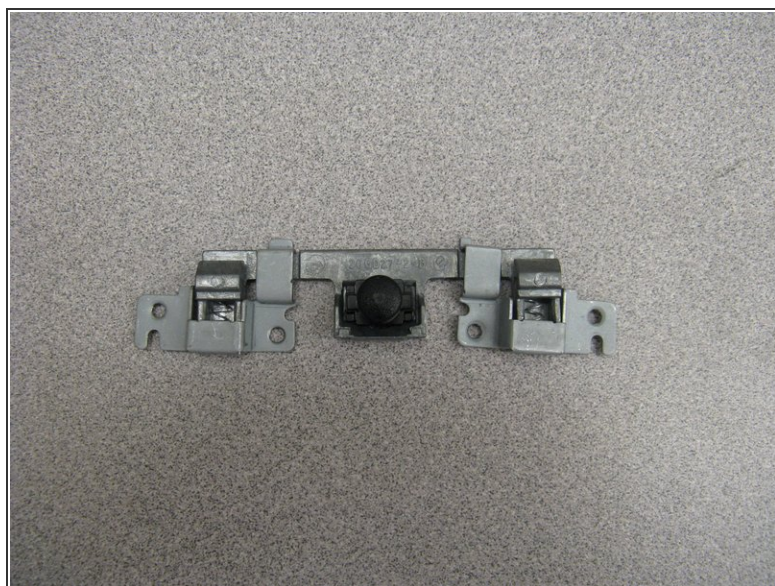
- Disconnect the USB ports by gentling grasping and pulling on the connector.

Step 7



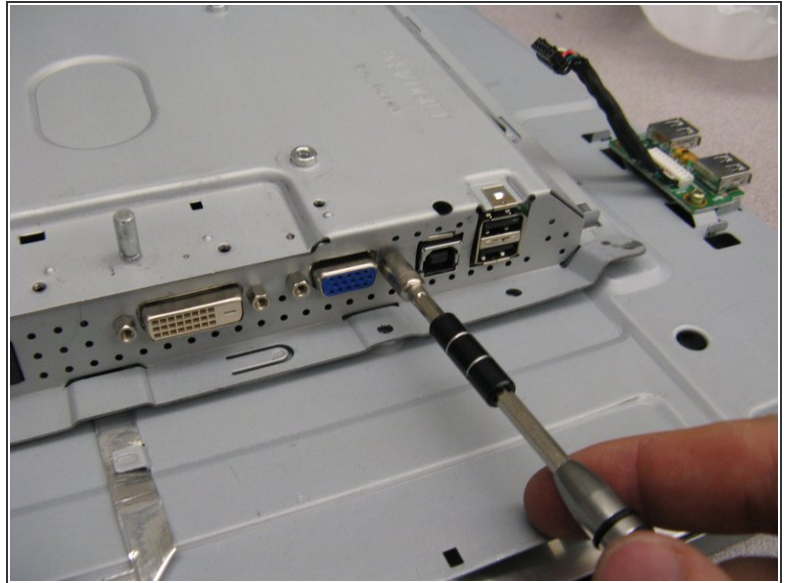
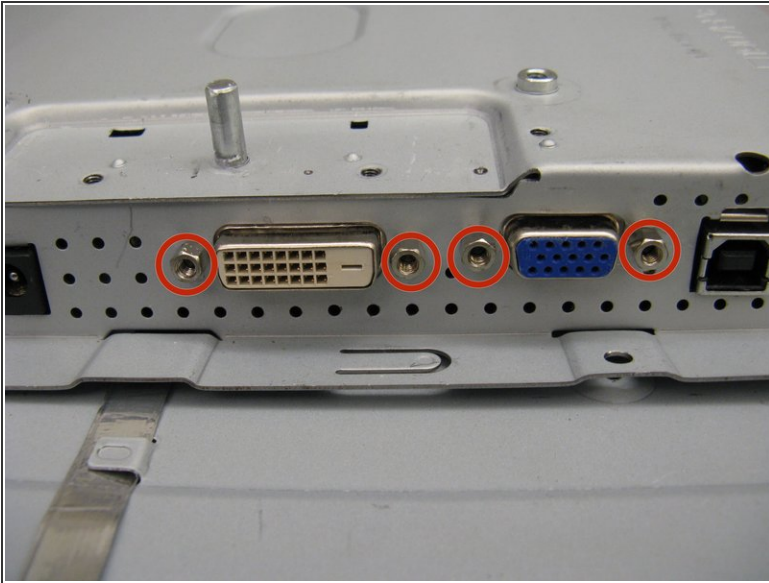
- Remove the five 5 mm Phillips #2 screws from the back panel.

Step 8



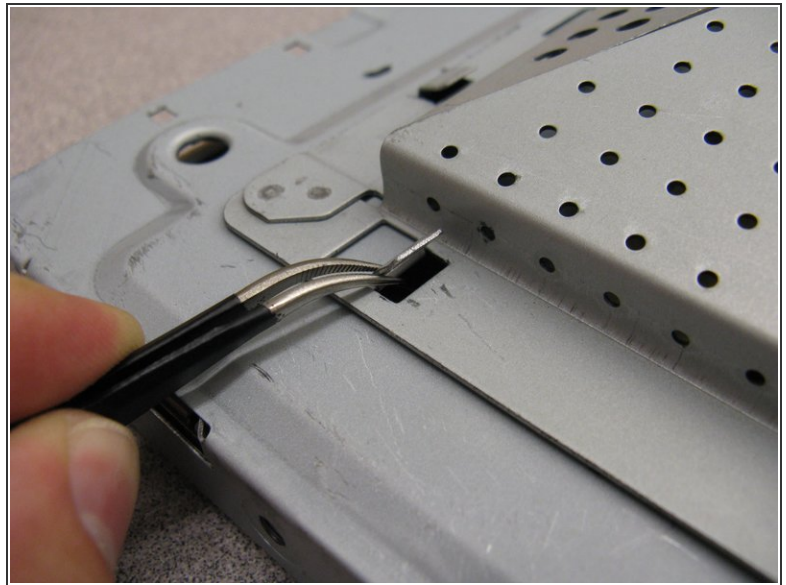
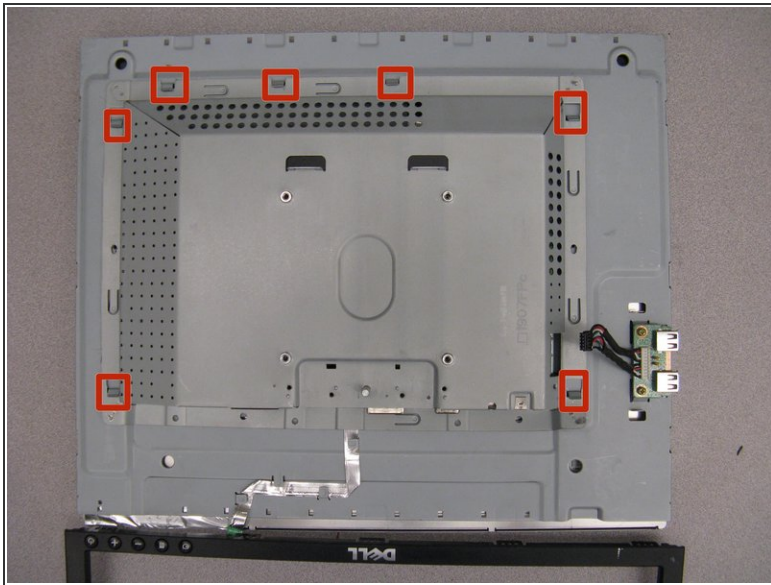
- Remove the four 4 mm Phillips #2 screws that secure the monitor mount release mechanism to the panel.
- Set this mechanism off to the side, taking care to keep it all in one piece.

Step 9



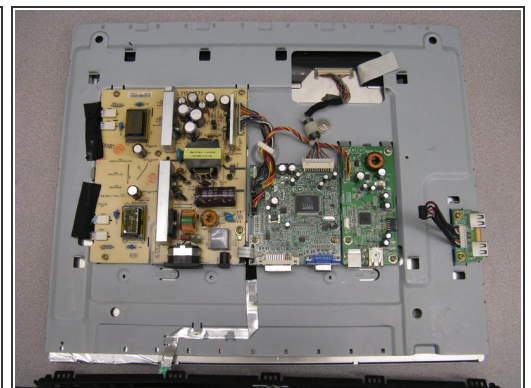
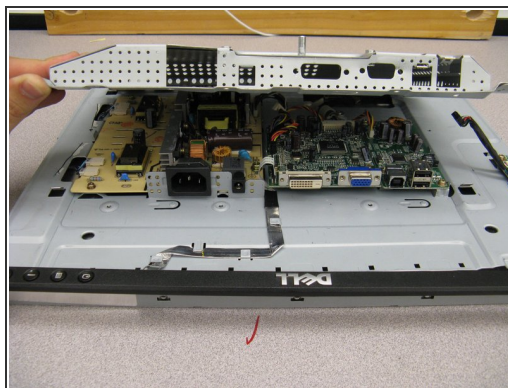
- Use a 5 mm nut driver to remove the four 12 mm standoff screws securing the video connectors to the panel.

Step 10



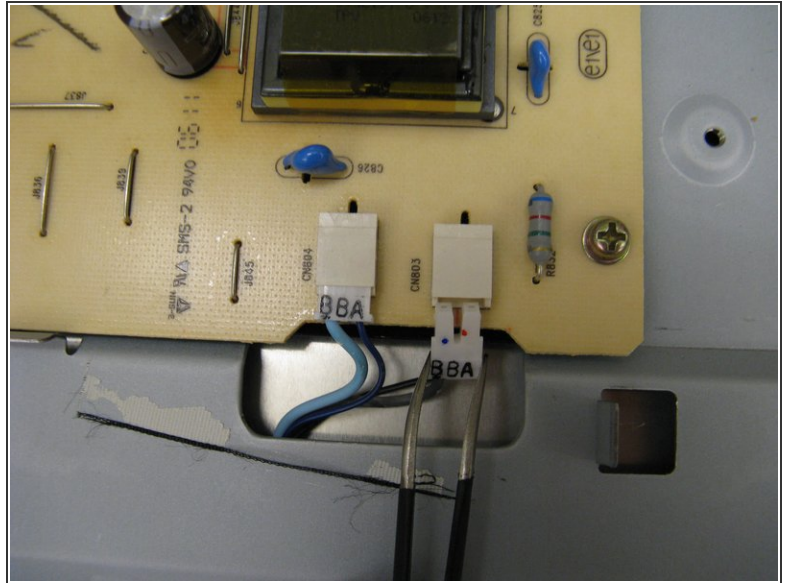
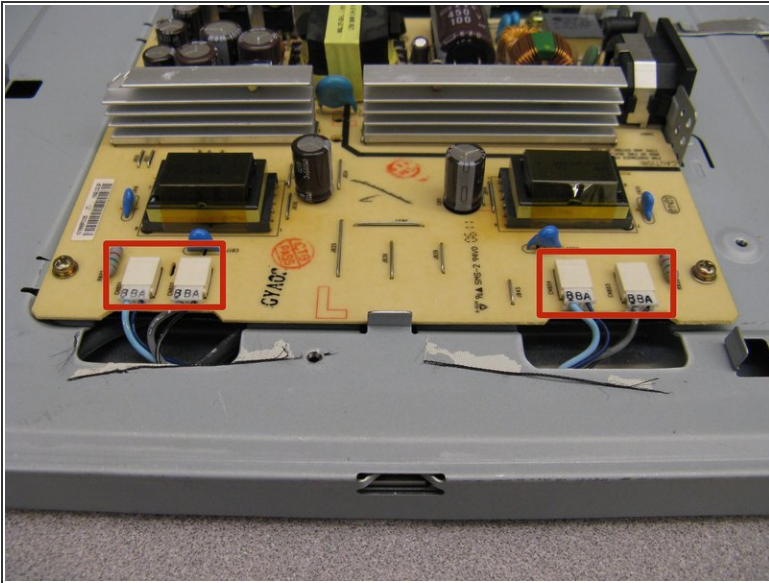
- Use the tweezers to lift up the seven security tabs that secure the back panel to the rest of the monitor.
- ⓘ If the security tabs are held down too tightly, use the spudger to pry them up, and then finish them off with the tweezers.

Step 11



- Lift up on the back panel to remove it from the rest of the monitor.
- ⚠ Be careful when doing so, as the edges of the back panel can be very sharp.

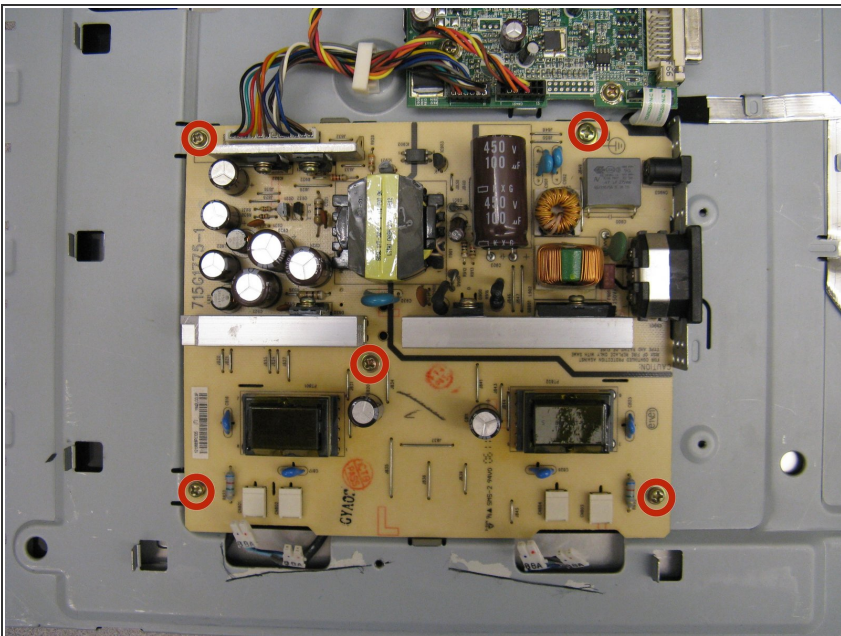
Step 12



⚠ The power supply has several large capacitors (they look like little cylinders), that can shock you if they discharge. Be careful not to touch them as you continue to work.

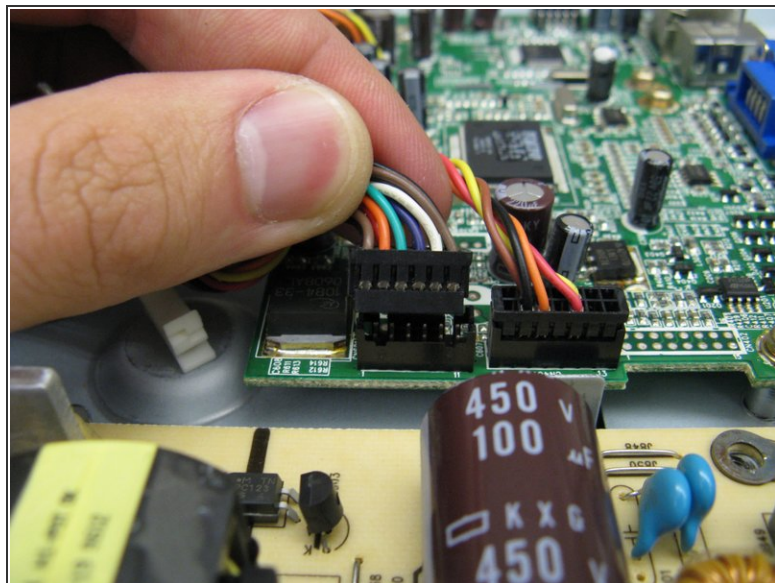
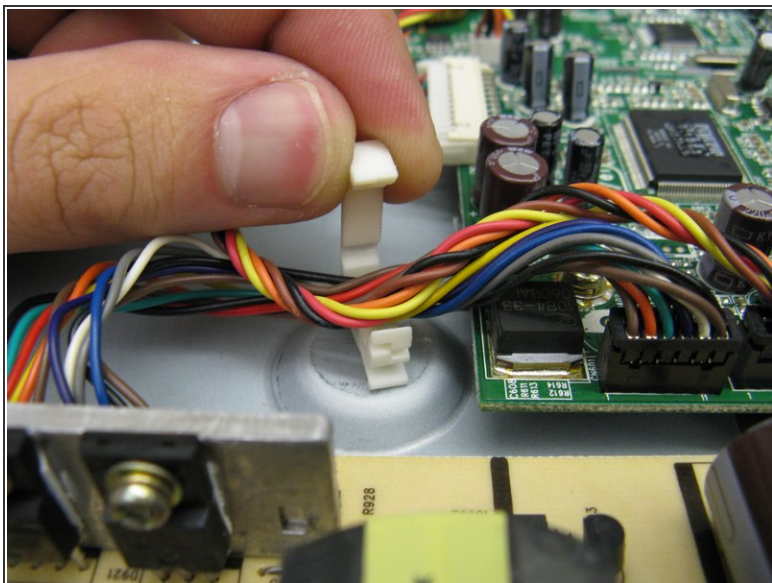
- Use the tweezers to remove the four connectors from the power supply board.

Step 13



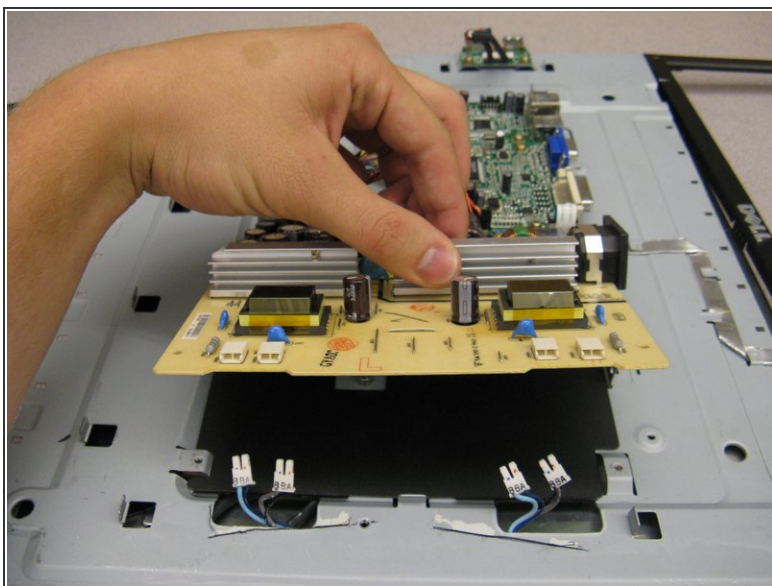
- Remove the five 7 mm Phillips #2 screws from the power supply board.

Step 14



- Open up the clip securing the wires running between the power supply and video boards.
- Gently remove the connector running from the video board to the power supply board.

Step 15



- The power supply board can now be removed.

To reassemble your device, follow these instructions in reverse order.