



# Sony Xperia ZR C5503 Teardown

This article tells you how to disassemble Sony Xperia ZR (C5503).

Written By: Xian Chen



---

## INTRODUCTION

This article tells you how to disassemble Sony Xperia ZR (C5503). It's not hard to disassemble at all, but still need carefulness to avoid tearing some fragile cables or cracking the screen.

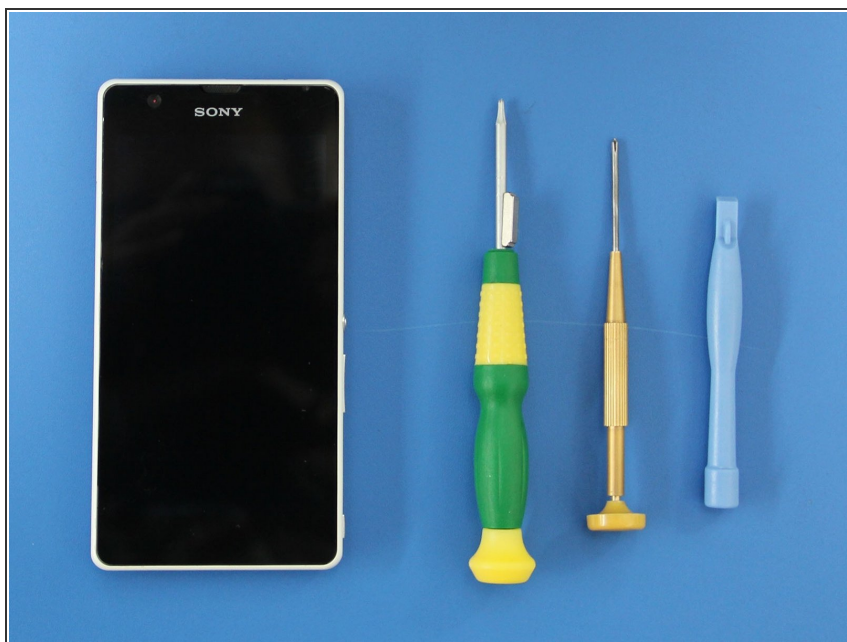
[Contributed by Fix4U](#), an iPhone, Samsung Galaxy, and other smartphone Repair Shop in Auckland.



### TOOLS:

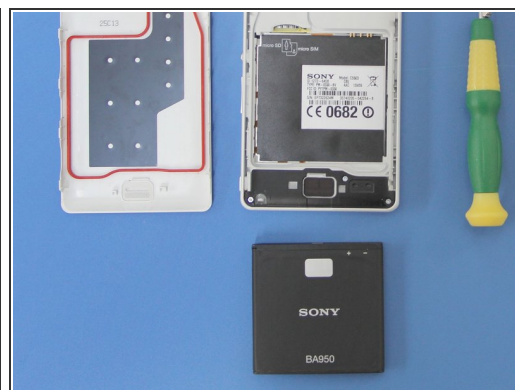
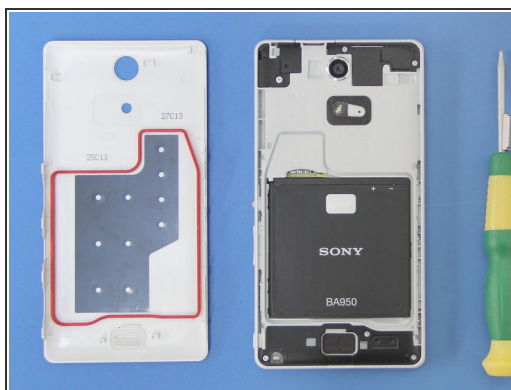
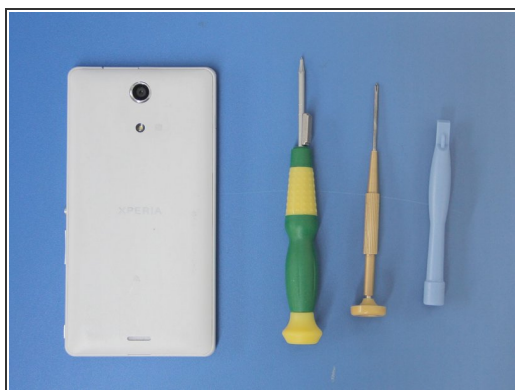
- [T6 Torx Screwdriver](#) (1)
  - [Phillips #00 Screwdriver](#) (1)
  - [iFixit Opening Tools](#) (1)
-

## Step 1 — Sony Xperia ZR C5503 Teardown



- To teardown, you only need 3 tools:
  - T6 Torx Screwdriver
  - Phillips #00 Screwdriver
  - Plastic Opening Tools

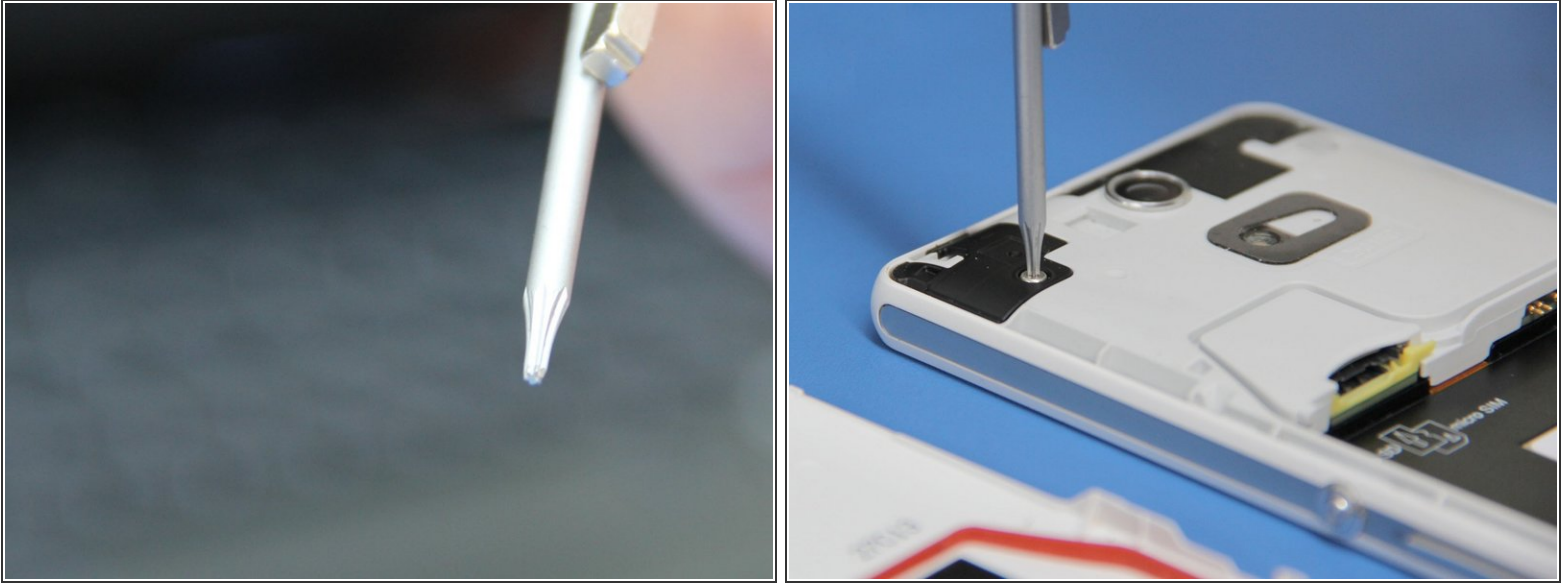
## Step 2



- Remove the back case.
- Then remove the battery.

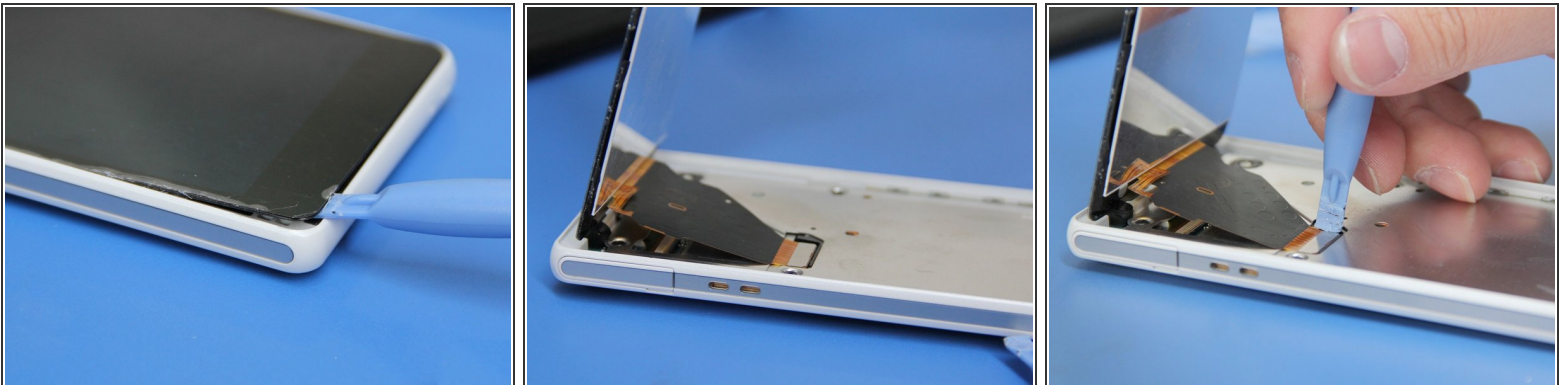


### Step 3



- Use T6 Torx Screwdriver to remove all screws you can see on the back panel.

### Step 4



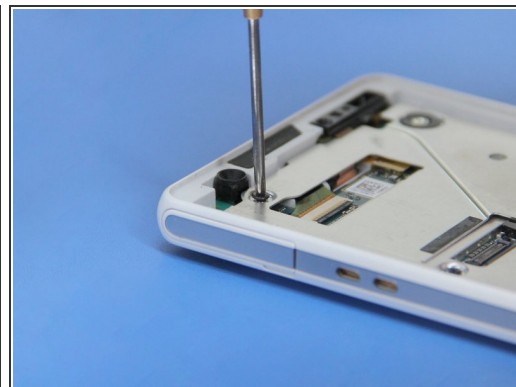
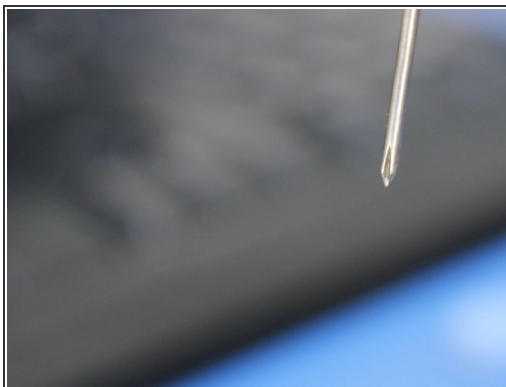
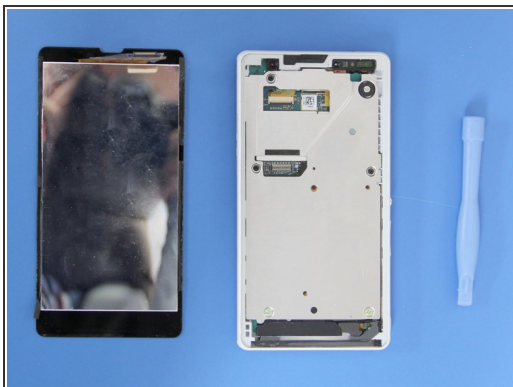
- Use plastic opening tool to get the screen off.
- Insert opening tool to the bottom edge of the screen. Then go along the edge slowly to separate the screen.
- Try several times to get an easy point to insert opening tool. Don't force, although this screen is not that fragile.
- Finally use opening tool to detach the screen panel connector.

Perform this step slowly. Be careful with the flex cable.


This document was generated on 2020-11-16 03:10:37 AM (MST).



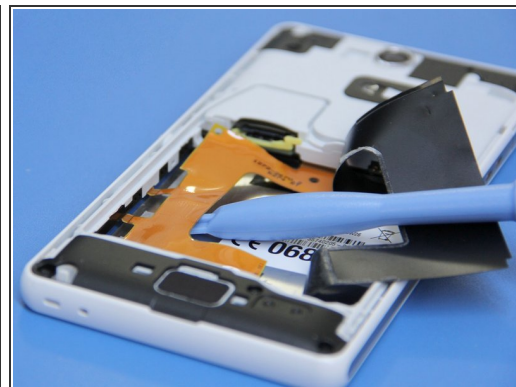
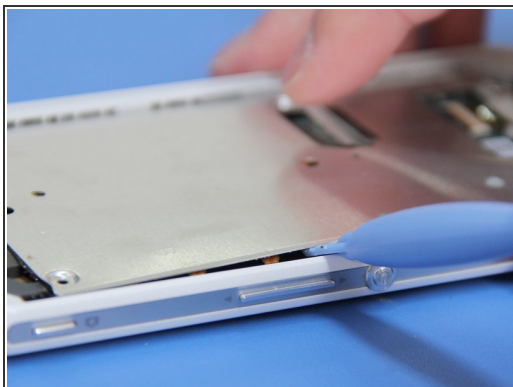
## Step 5




- Get the partition between screen panel and motherboard out.
- Firstly, use Phillips #00 Screwdriver to remove all the screws you can see on the partition.

 Check next step first, don't hurry to pry the partition!

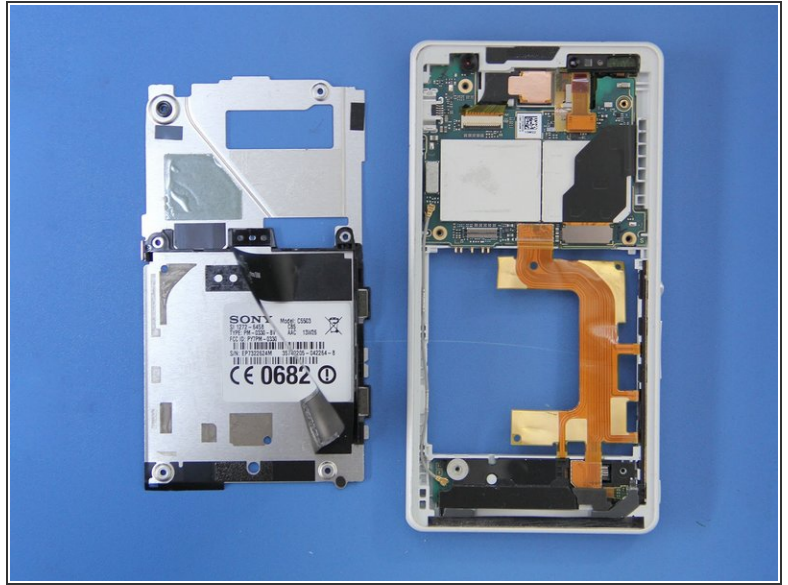
## Step 6



- Gently pry the partition out a little, you can see there's volume button flex cable sticking on the partition panel. So if you pry too hard, these flex cable may be torn.
- Flip the phone.
- Lift the black sticky plastic paper slowly and then you'll see the flex cable sticky on the partition.
- Use plastic opening tool to separate the flex cable.

 Perform this step gently and slowly in case of tearing it.

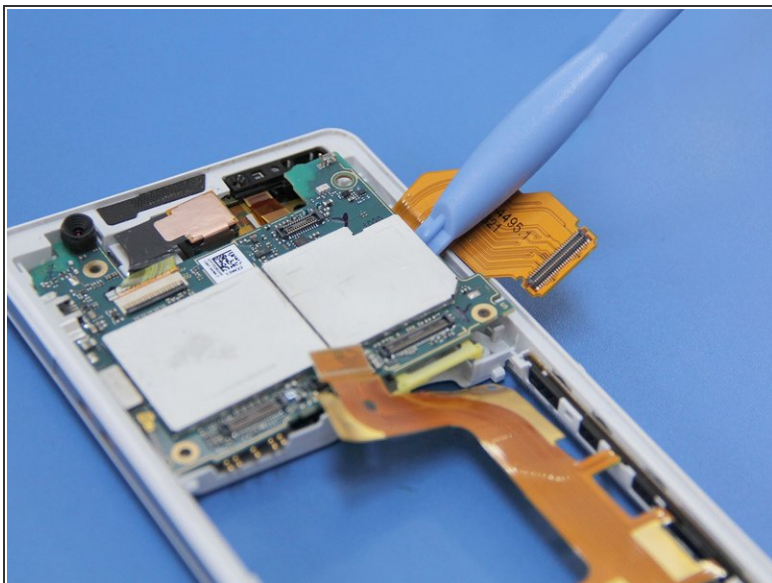
## Step 7



- Now the partition is easy to get out.
- Then you can see the motherboard.



## Step 8



- Use opening tool to open connectors on motherboard gently.
  - Volume button / power button flex cable connector
  - Antenna on the left
  - Front camera flex cable connector
  - And another connector on the right
- That's it!

To reassemble your device, follow these instructions in reverse order.