



# Nokia 6236i SIM Card Replacement

This will guide you through removing the sim card.

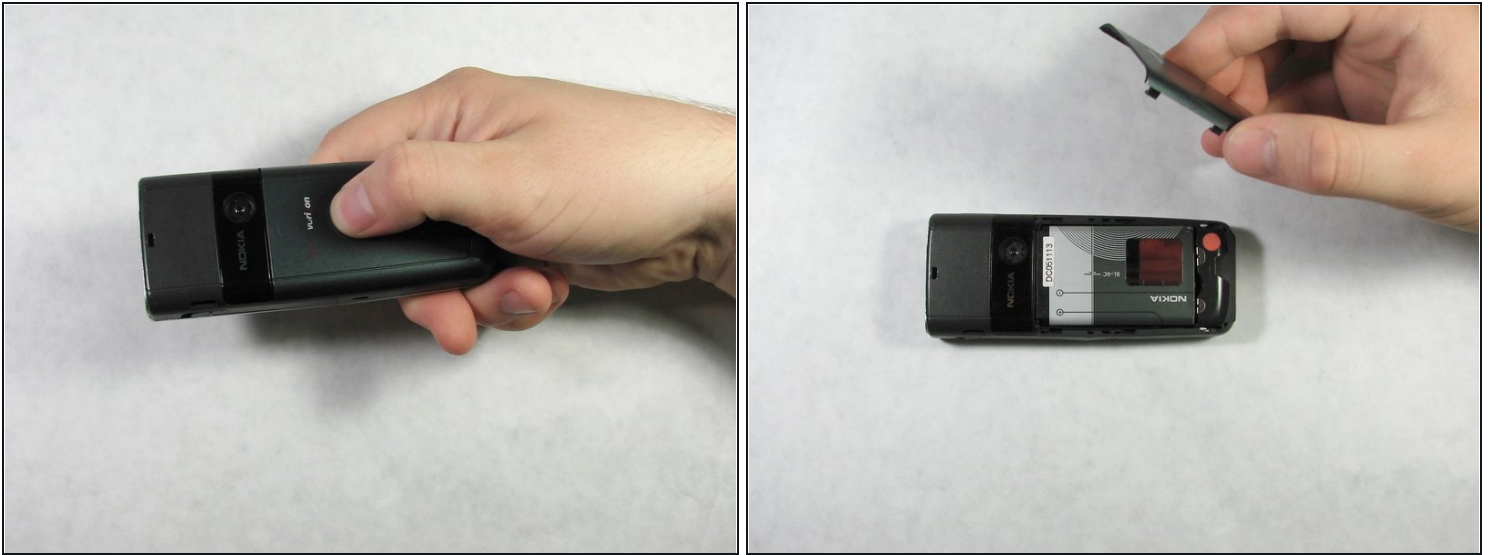
Written By: Jesse Roach



# INTRODUCTION

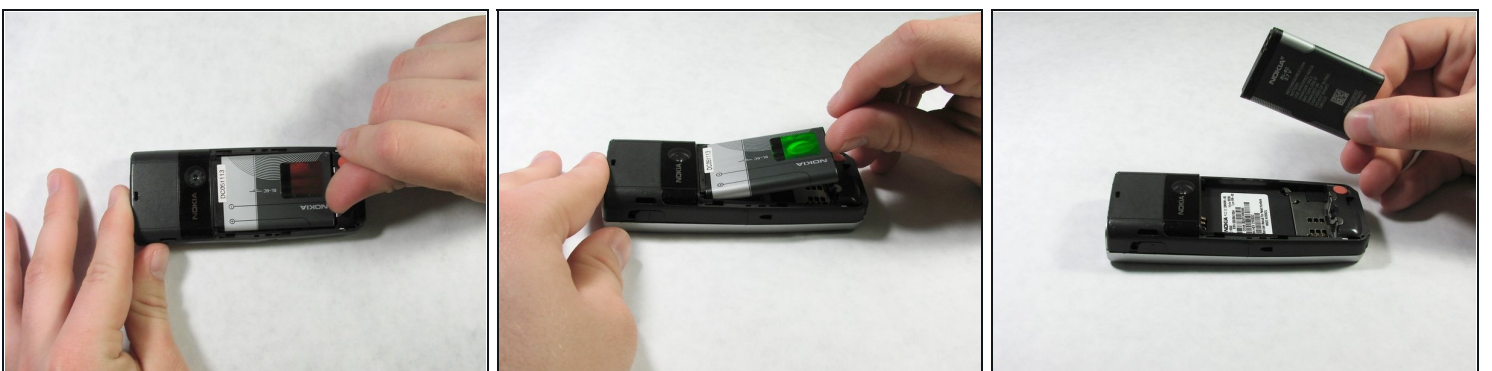
This will guide you through removing the sim card.

## Step 1 — Battery



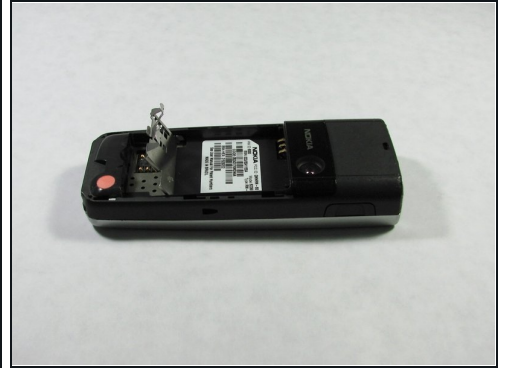
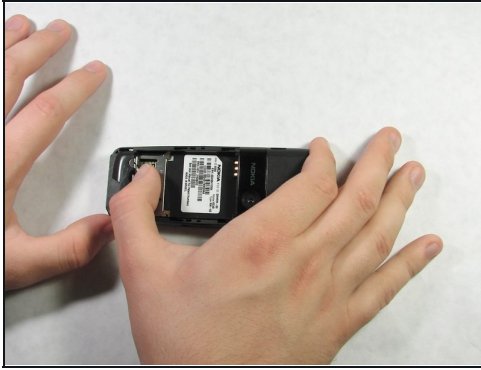
- Using your thumb, apply pressure to the battery casing (below the camera). Firmly pull towards the bottom of the phone.
- Lift the battery case off of the phone.

## Step 2



- Use your thumb to get underneath the battery and pull up and out from the bottom of the battery tray.
- The battery should lift out with minimal resistance.

### Step 3 — SIM Card



- Once the battery is removed, pull the tab of the metal sim card cover, and lift it up.
  - The sim card is underneath and can now be removed.
- 

To reassemble your device, follow these instructions in reverse order.