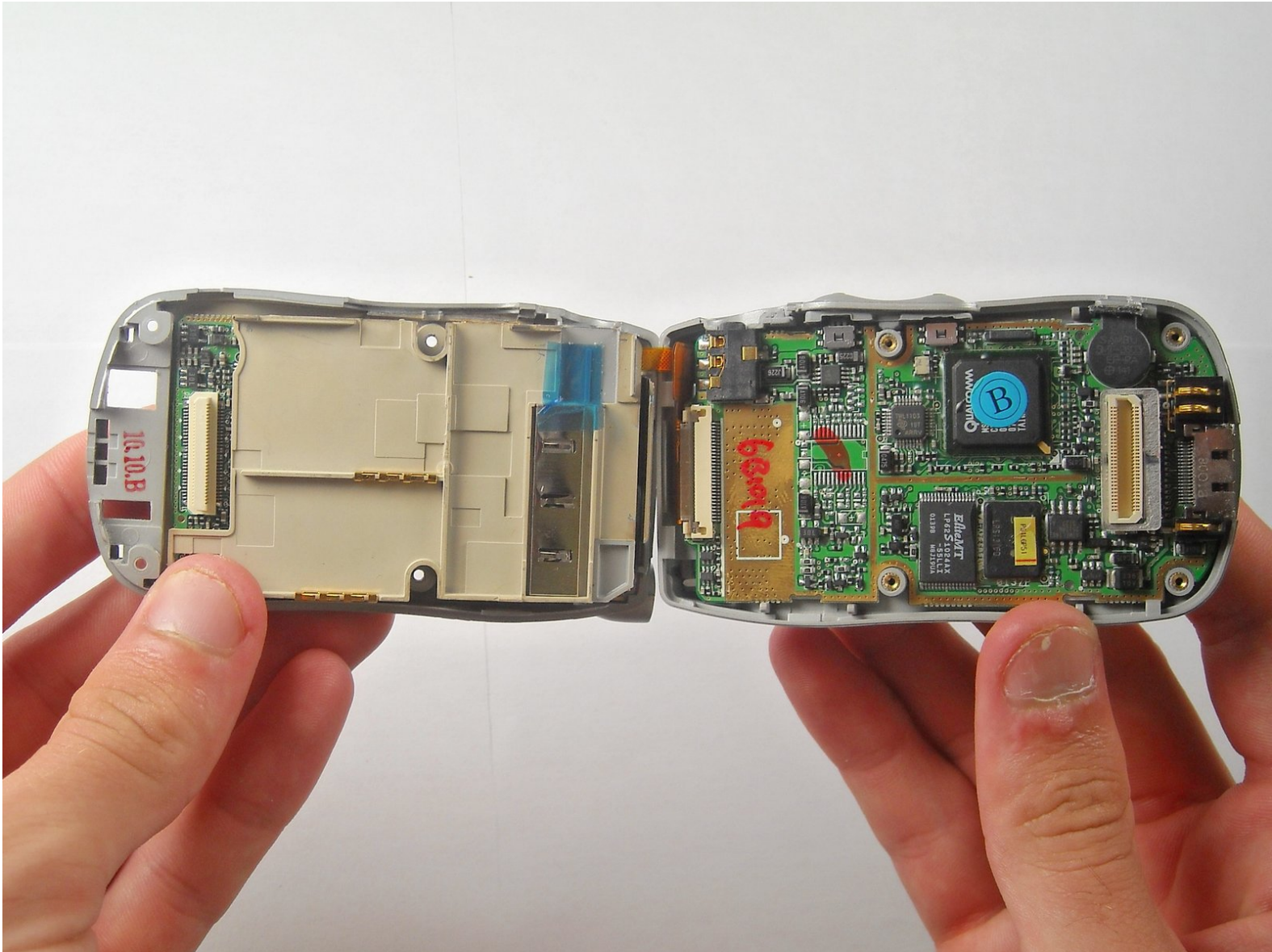




LG TP 1100 Teardown

Written By: Joel Cabrera



INTRODUCTION

Taking apart the phone



TOOLS:

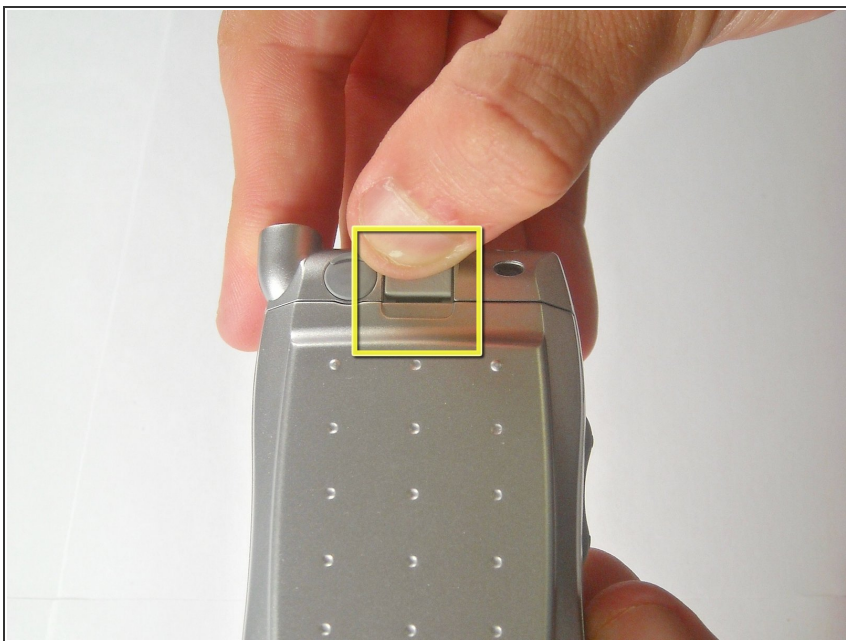
- [Heavy-Duty Spudger](#) (1)
 - [iFixit Opening Tools](#) (1)
-

Step 1 — LG TP 1100 Teardown



- Unscrew and remove antenna from socket

Step 2



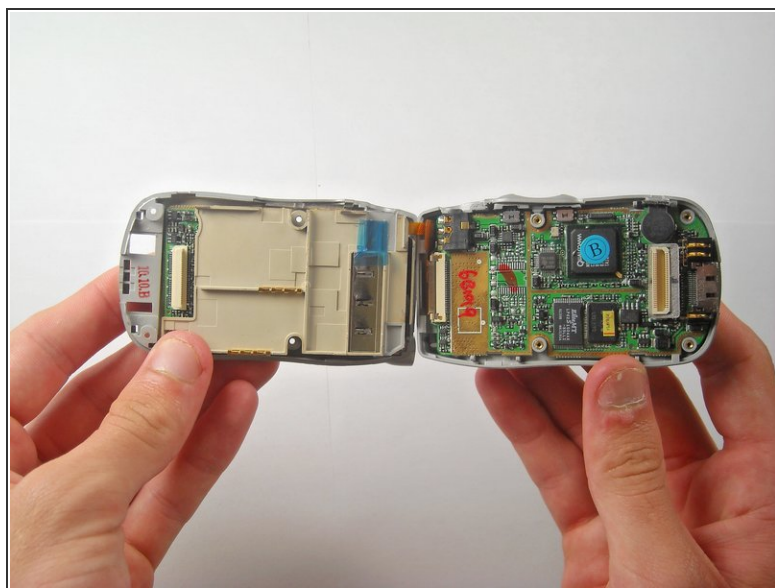
- Turn the phone over
- Pull up on the tab at the top
- Remove the Battery

Step 3



- Unscrew the four screws behind the battery

Step 4



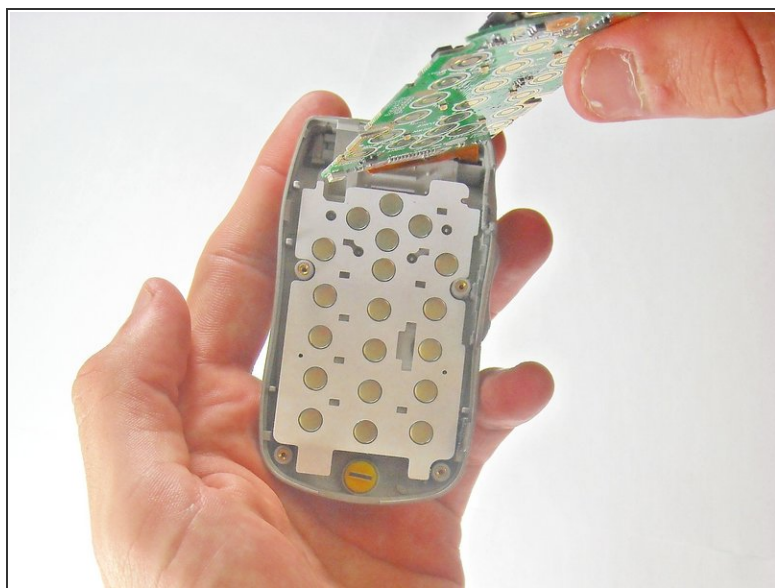
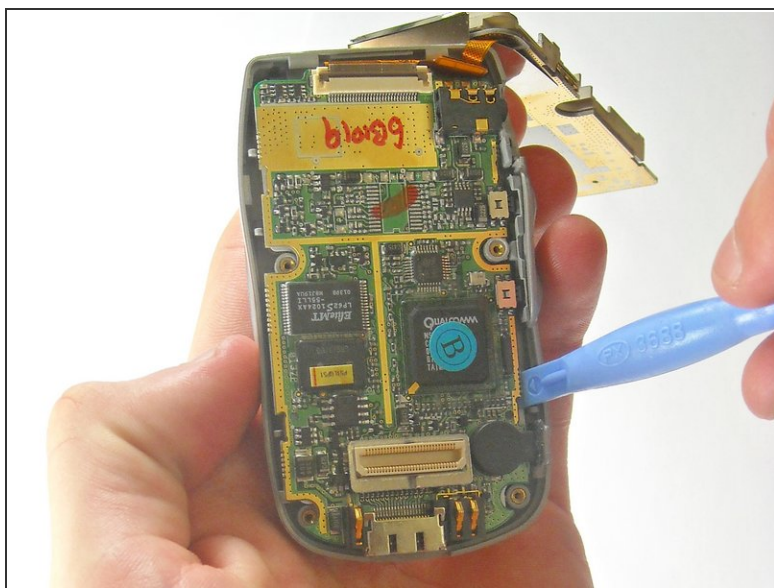
- Pull off and remove the back cover
 - Do not separate the covers
 - Do not rip the tape connecting the two covers

Step 5



- Remove back cover

Step 6



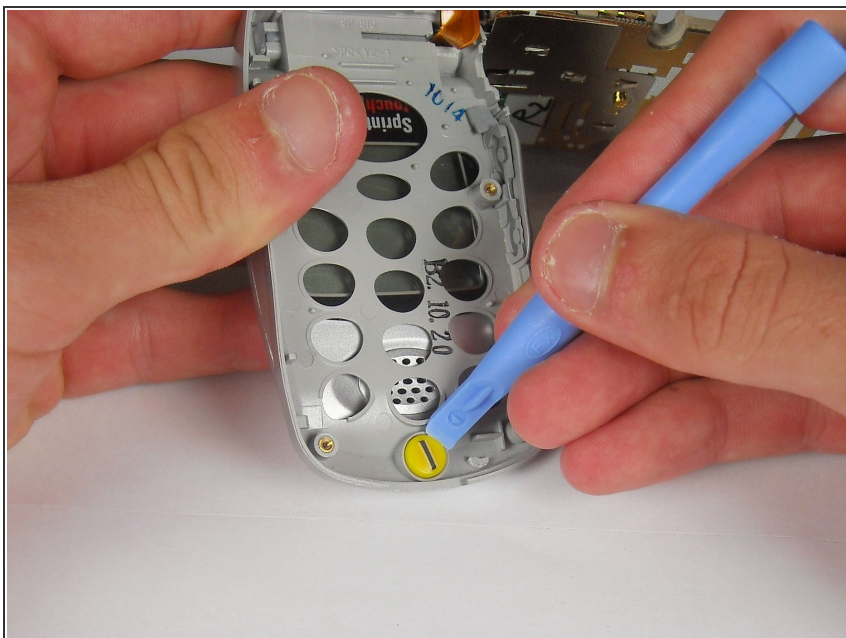
- Pry the circuit board from front cover
- Do not let number pad fall out

Step 7



- Now remove the number pad and navigation keys

Step 8



- Pry out microphone with opening tool

Step 9



- Slide opening tool into crevasse and pry open top cover
 - Do so on both sides
 - Do not completely remove cover

Step 10



- Pry out speaker with heavy-duty spudger
- ⚠ Caution: Do not disconnect the wires connecting the speaker, they are very fragile

To reassemble your device, follow these instructions in reverse order.