



Garmin Nuvi 200 Battery Replacement

Written By: Anjelica



INTRODUCTION

Replacing the battery in the Garmin Nuvi 200



TOOLS:

- [Phillips #00 Screwdriver](#) (1)
- [T5 Torx Screwdriver](#) (1)
- [iFixit Opening Tools](#) (1)



PARTS:

- [Garmin Nuvi 200/205/250/255/260/265/270 Replacement Battery](#) (1)

Step 1 — Rear Casing



- Peel off the sticker from the bottom of the device to reveal two screws.

Step 2



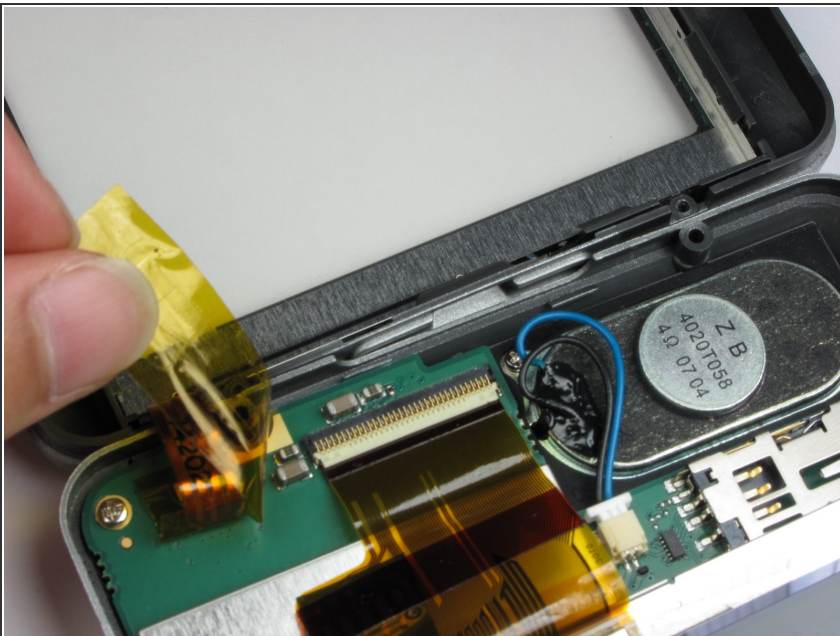
- Remove two T5 Torx screws.

Step 3



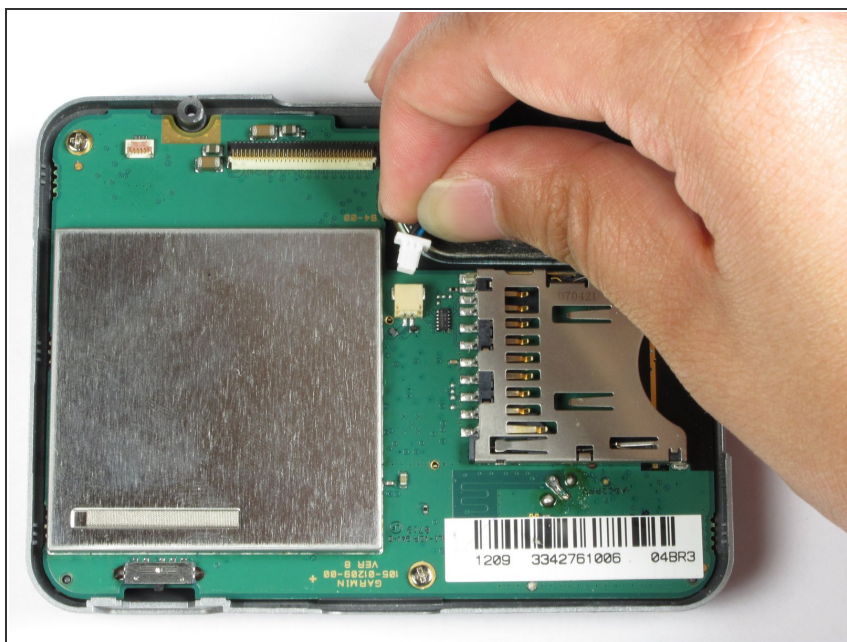
- Insert a plastic opening tool in the gap between the front and rear casing.
- Carefully work the tool around the gap, separating the two halves of the case.
- ⓘ Keep the power switch in place while removing the rear case.

Step 4 — Logic Board



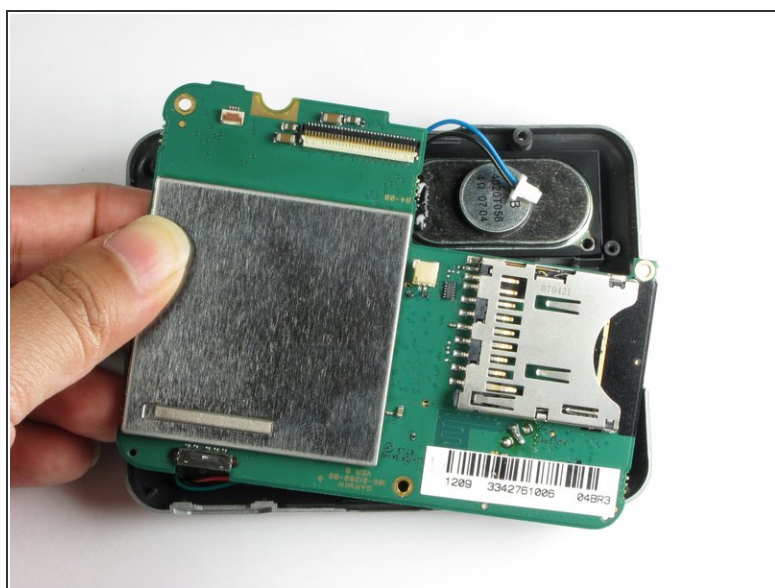
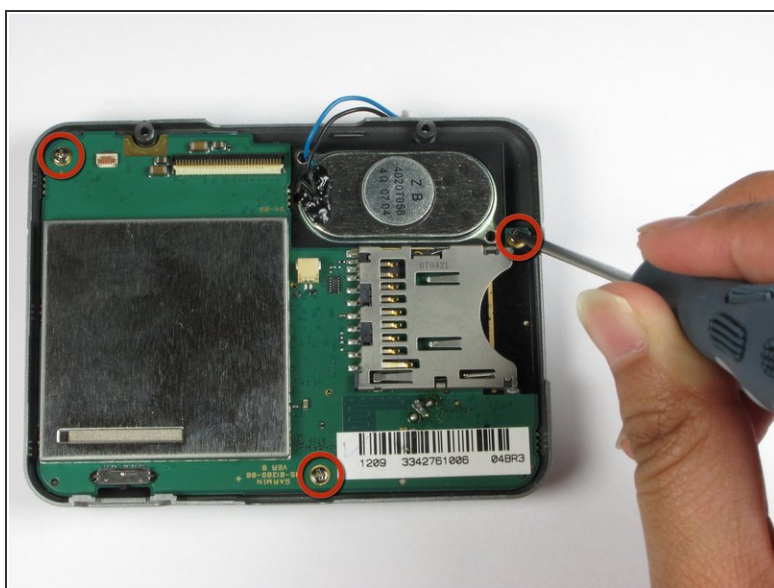
- Peel away the tape holding the ribbon cable in place.
- Disconnect the ribbon cable by using a spudger to flip up the retaining flap on its [ZIF-style connector](#). Then gently remove the cable.

Step 5



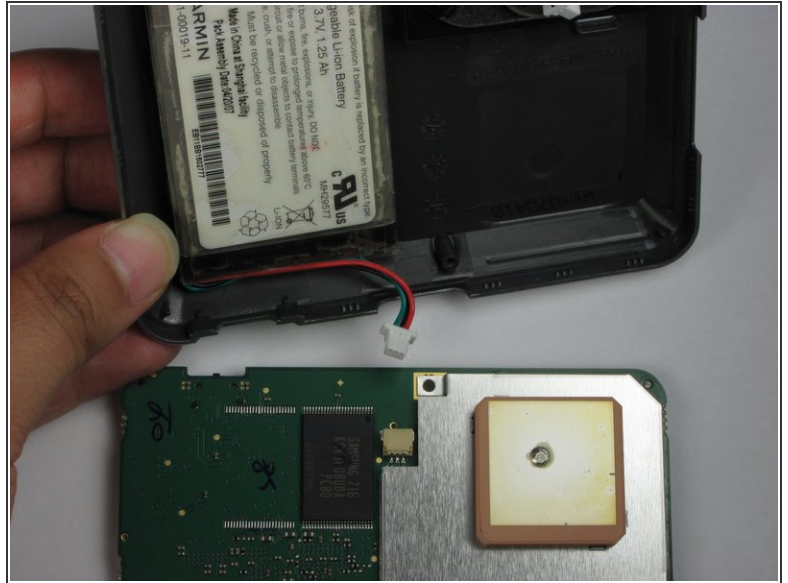
- Pull out the cable between the logic board and the speaker to disconnect them.

Step 6



- Remove the three screws from the logic board using the #00 Phillips screwdriver.
- Lift the board away from the case but do not pull the logic board completely off, as it is still attached to the battery by a cable.

Step 7



- Detach the logic board from the battery by pulling out the cable.

Step 8 — Battery



⚠ Do not use any sharp objects around the battery, as these may puncture the battery.

- Remove the battery by pulling it away from the casing.
- ⓘ The battery is glued to the casing.

To reassemble your device, follow these instructions in reverse order.