



MacBook Pro 15" Unibody Late 2008 and Early 2009 Hard Drive Bracket with Sleep Sensor Replacement

Replace the hard drive bracket and sleep sensor cable assembly in a MacBook Pro 15" Unibody Late 2008 and Early 2009.

Written By: Sam Goldheart



INTRODUCTION

Use this guide to replace the hard drive bracket nearest the front edge of your MacBook Pro 15" Unibody Late 2008 and Early 2009. This bracket also contains the infrared sleep sensor and its cable.



TOOLS:

- [Phillips #00 Screwdriver](#) (1)
- [Spudger](#) (1)



PARTS:

- [MacBook Pro 15" Unibody \(Late 2008 Early 2009\) Hard Drive Bracket and IR Sensor](#) (1)

Step 1 — Access Door



- With the case closed, place the Unibody top-side down on a flat surface.
- Depress the grooved side of the access door release latch enough to grab the free end. Lift the release latch until it is vertical.

Step 2



- The access door should now be raised enough to lift it up and out of the Unibody.

Step 3 — Battery



- **i** Be sure the access door release latch is vertical before proceeding.
- Grab the translucent plastic tab and pull the battery up and out of the Unibody.
- If the latch is depressed it will lock the battery in place.

Step 4 — Lower Case



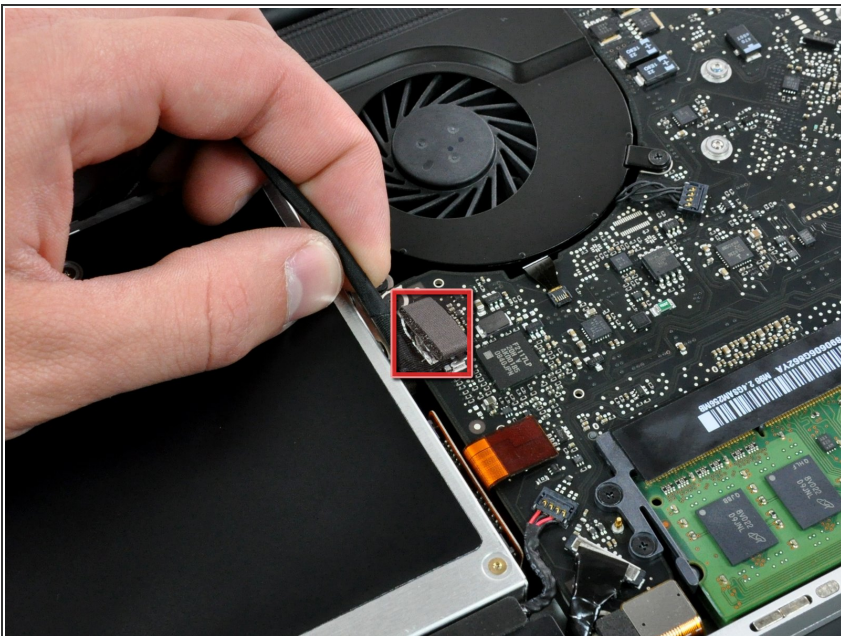
- Remove the following eight screws securing the lower case to the chassis:
 - One 5.4 mm Phillips screw.
 - Three 14 mm Phillips screws.
 - Four 3.5 mm Phillips screws.

Step 5



- Using both hands, lift and remove the lower case off the upper case.

Step 6 — Optical Drive



- Disconnect the camera cable by pulling the male end straight away from its socket.

Step 7



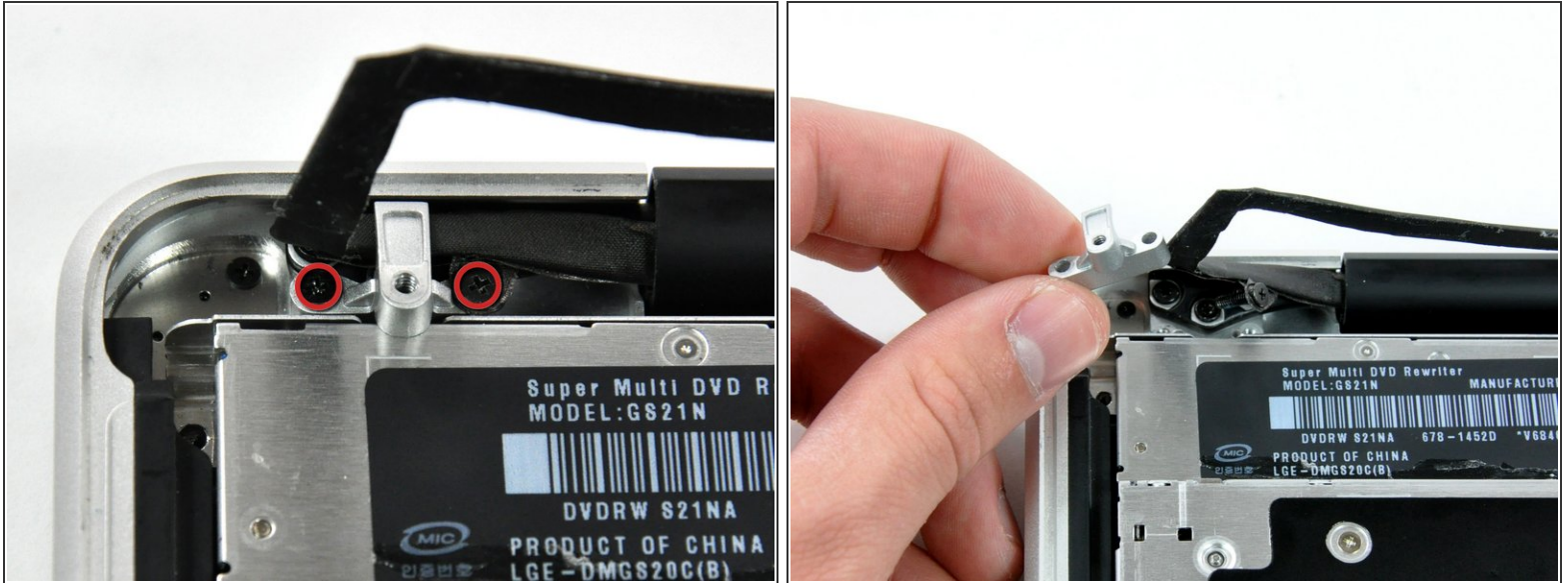
- Deroute the camera data cable from the channel in the optical drive.

Step 8



- Use a spudger to pry the optical drive connector straight up off the logic board.

Step 9



- Remove two 8 mm Phillips screws securing the camera cable bracket to the upper case.
- ⓘ The rightmost screw may remain captive in the camera cable.
- Lift the camera cable bracket out from the upper case.

Step 10



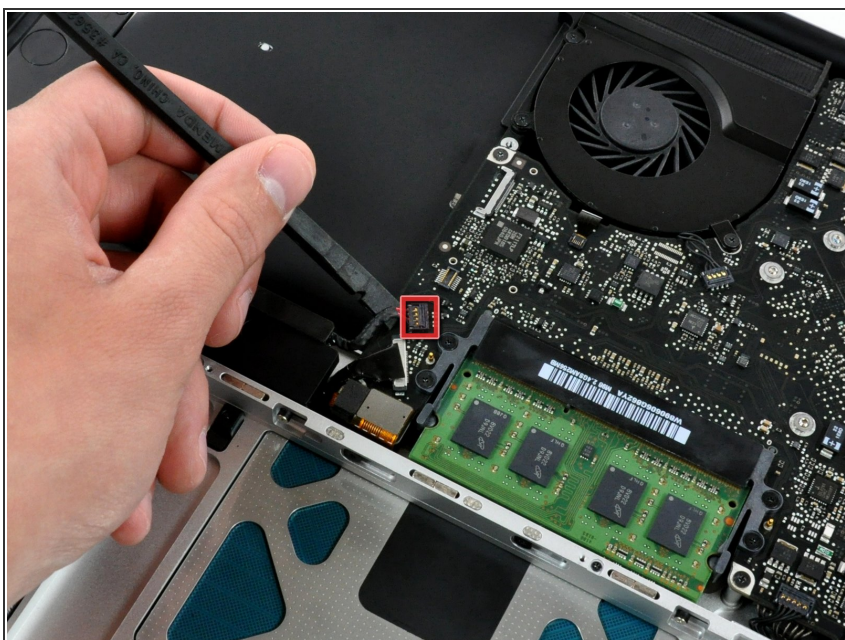
- Remove the following three Phillips screws securing the optical drive to the upper case:
 - One 3.5 mm Phillips screw.
 - Two 2.5 mm Phillips screws.

Step 11



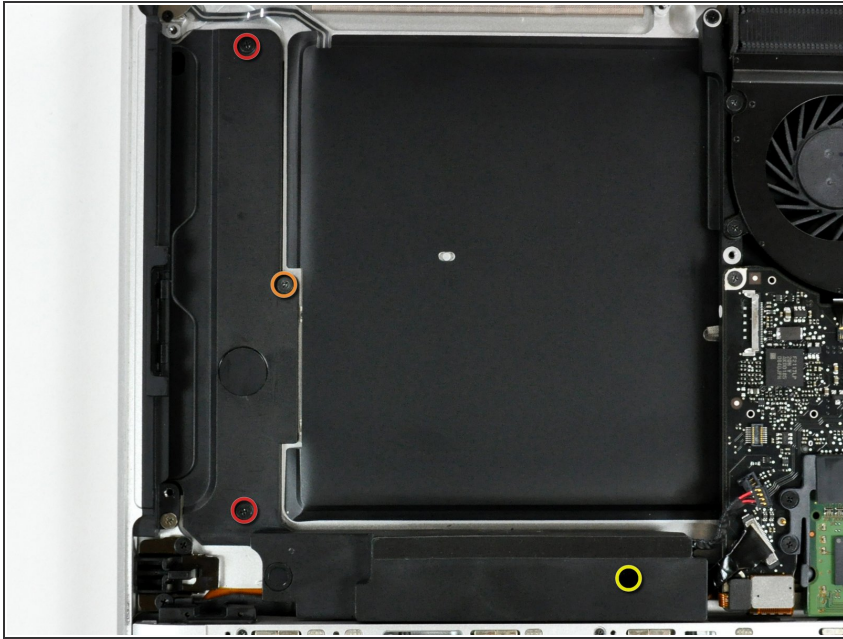
- Lift the optical drive from its left edge and pull it out of the computer.

Step 12 — Subwoofer & Right Speaker



- Using the flat end of a spudger, pry the subwoofer connector straight up off the logic board.

Step 13



- Remove the following four screws securing the subwoofer and right speaker to the upper case:
 - Two 3.2 mm Phillips screws.
 - One 2.6 mm Phillips screw.
 - One 5 mm Phillips screw.

Step 14



- Lift the subwoofer and right speaker assembly out of the upper case.

Step 15 — Hard Drive Cable



- Remove the single Phillips screw securing the hard drive bracket to the upper case.
- ⓘ This screw is captive in the hard drive bracket.

Step 16



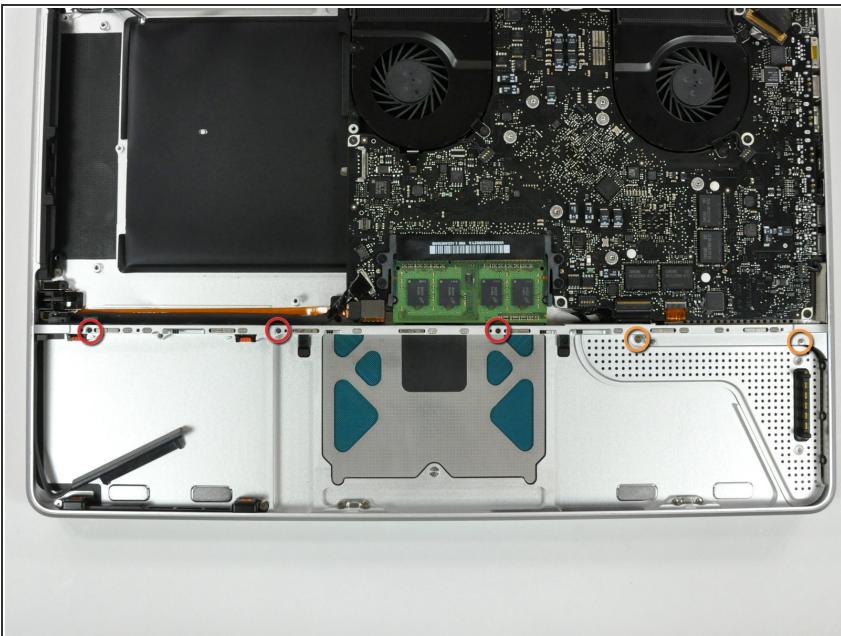
- Lift the hard drive by its plastic pull tab and remove the freed hard drive bracket.

Step 17



- Lift the hard drive out of its supports and disconnect the SATA cable by pulling the connector straight away from the hard drive.

Step 18



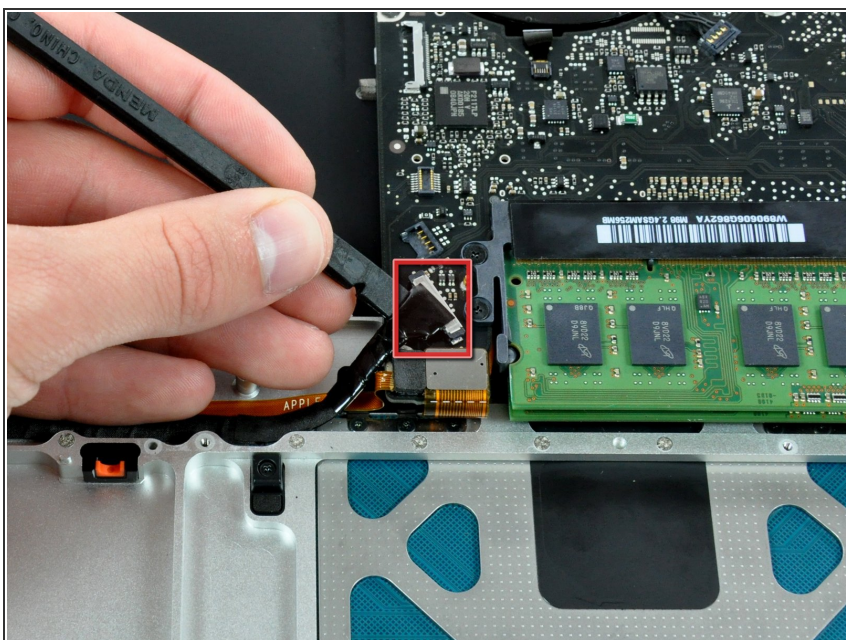
- Remove the following 5 screws securing the mid wall to the upper case:
 - Three 10.5 mm Phillips screws.
 - Two 3.7 mm Phillips screws.
- Lift the mid wall out of the upper case.

Step 19



- Lift the mid wall out of the upper case.

Step 20



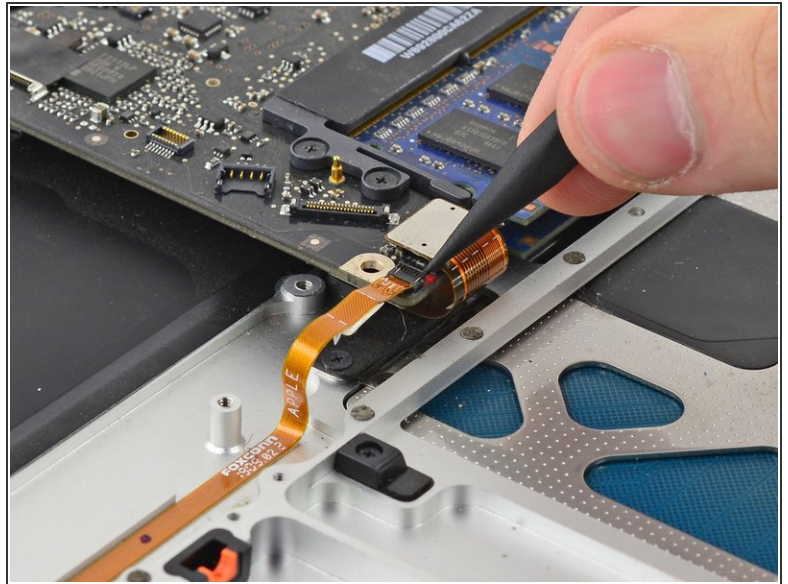
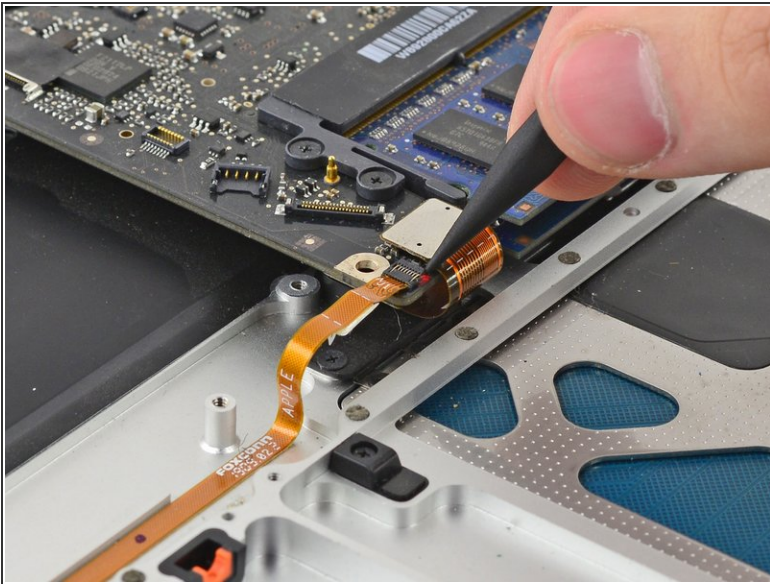
- Use a spudger to pry the hard drive cable connector straight up off the logic board.

Step 21



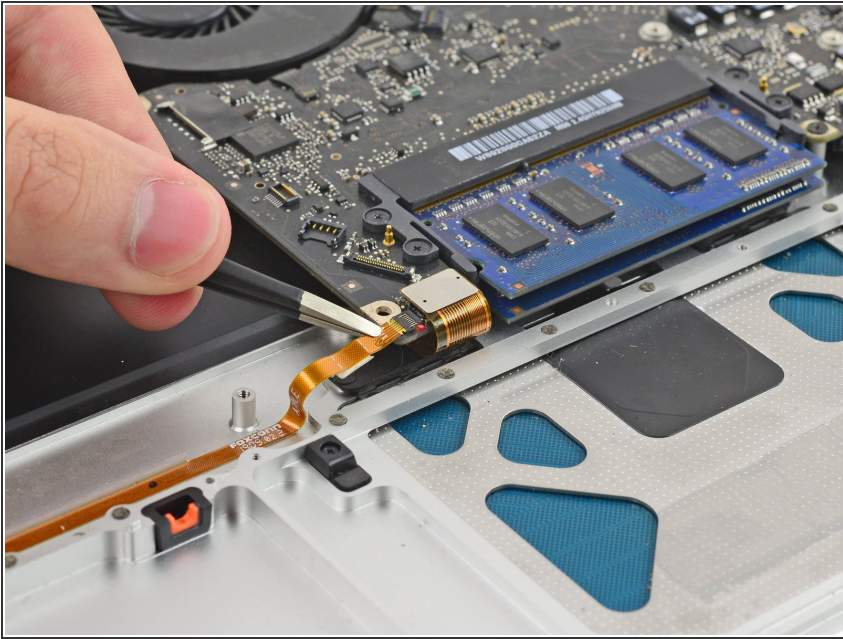
- Peel the hard drive cable from the adhesive securing it to the upper case, and maneuver the plastic retaining block out of the upper case.

Step 22 — Hard Drive Bracket with Sleep Sensor



- Use the pointed end of a spudger to flip the lock on the ZIF connector.

Step 23




- Pull the hard drive bracket cable out of its socket.

Step 24



- Peel the connector side of the sleep sensor cable up from the adhesive securing it to the upper case.

 Be especially careful peeling the folded section of the cable, and peeling around corners. These areas are more susceptible to damage.

Step 25



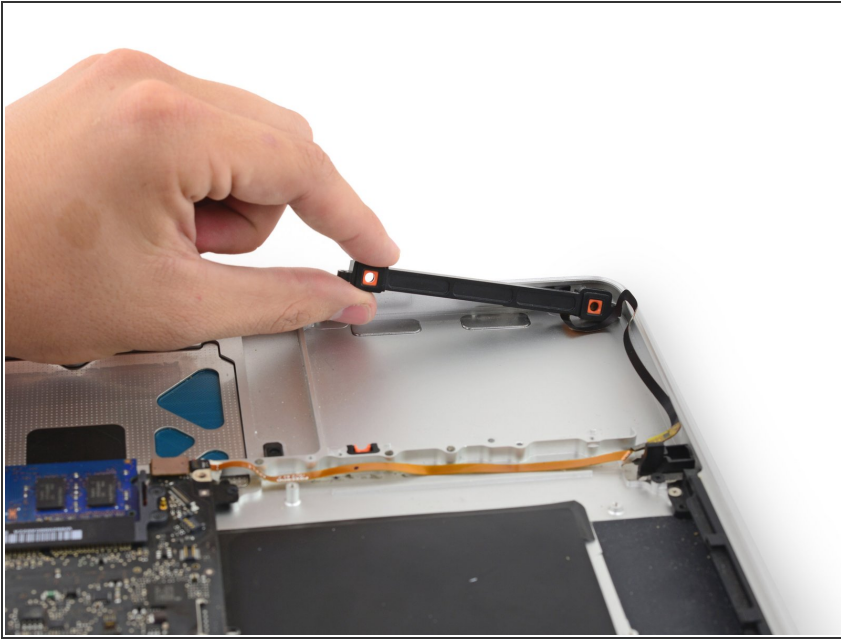
- Remove the two 5 mm Phillips #00 screws securing the hard drive bracket to the upper case.

Step 26



- Insert the tip of the spudger between the hard drive bracket and the front edge of the upper case to free it from its recess.

Step 27



- After ensuring that the cable is freed of all adhesive, remove the hard drive bracket and sleep sensor assembly from the upper case.
- ☑ If your new bracket cable is not pre-folded, use the old one as a guide to crease it for proper fit in your MacBook.

To reassemble your device, follow these instructions in reverse order.