



# TomTom ONE Speaker Replacement

If your speakers have stopped working, this is...

Written By: Becca



## INTRODUCTION

If your speakers have stopped working, this is the guide for you! It will show you how to replace your speaker with a new one.

---

### **TOOLS:**

Spudger (1)

TR7 Torx Security Screwdriver (1)

TR9 Torx Security Screwdriver (1)

---

### Step 1 — Speaker



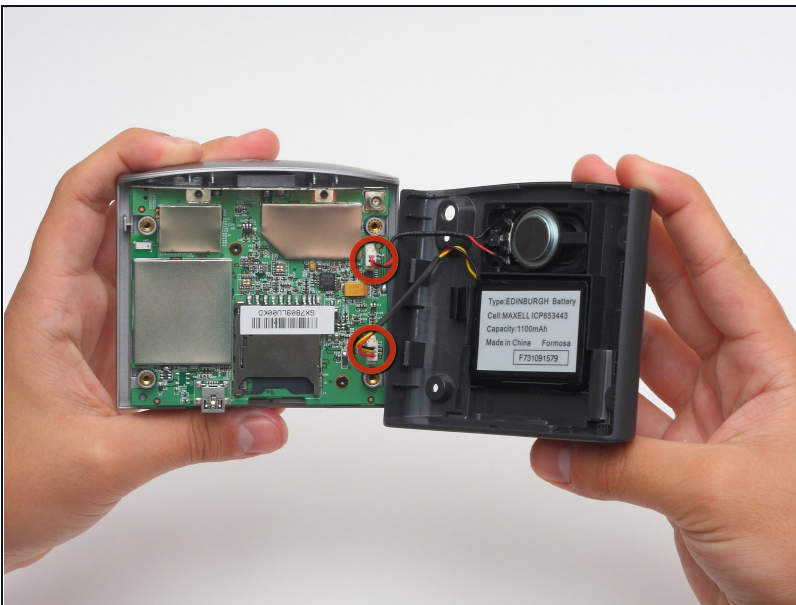
- Use a T-9 Torx screwdriver to unscrew the four screws on the back cover.

## Step 2



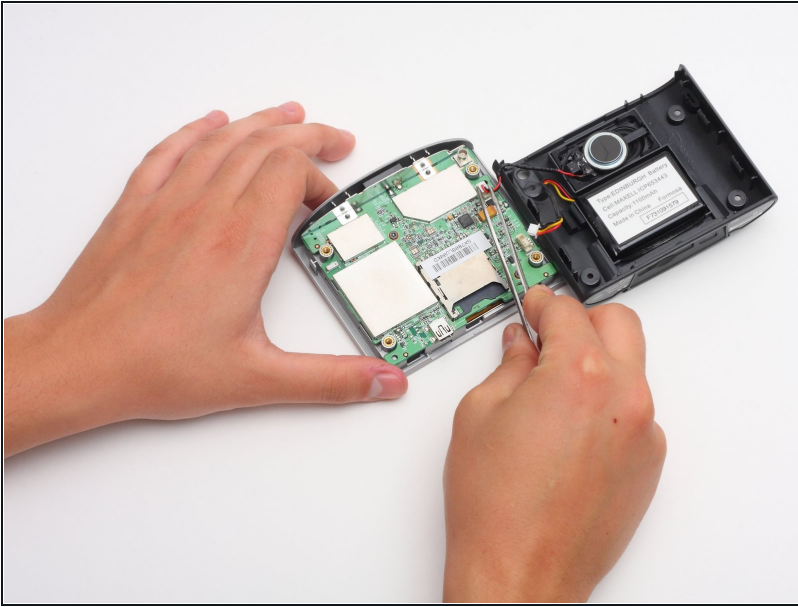
- Using the spudger, gently pry apart the back case from the front case. It is easier to start on a side and work your way around the device.

## Step 3



⚠ Carefully pull the back cover apart from the front cover. Be careful not to pull too hard because there are two sets of wires connecting the device.

## Step 4



- Once the two covers are separated, use the [tweezers](#), or even your fingers, to gently disconnect the two sets of wires that are connected to the motherboard from the back cover. You may have to wiggle the wires a little bit to get them to disconnect.

## Step 5



- Take the spudger and pry out the speaker.
- ① When taking out the speaker, the entire plastic shock mounting casing will come out.

To reassemble your device, follow these instructions in reverse order.