



# ZTE Boost MAX N9520 Display Assembly Replacement

This guide will teach you the way to replace the screen on the zte max and show you how to tear it down.

Written By: T3chboii



This document was generated on 2020-12-14 10:30:27 PM (MST).

# INTRODUCTION

This guide will teach you the way to replace the screen on the zte max and show you how to tear it down.

---

## TOOLS:

- [Phillips #000 Screwdriver](#) (1)
  - [iSesamo Opening Tool](#) (1)
  - [Heat Gun](#) (1)
  - [Adhesive tape 3M core 5mm](#) (1)
  - [Adhesive 1mm](#) (1)
  - [Spudger](#) (1)
-


## Step 1 — Display Assembly



- JUST LIFT IT UP FROM THE CORNER WITH A FLAT HEAD OR A SIMILAR TOOL FROM THE ONE YOU SEE ON THE PIC

## Step 2



 THE YELLOW SCREWS AS SHOWN ON THE PIC WILL AVOID YOUR WARRANTY, JUST USE A PHILLIP SCREWDRIVER TO TAKE OUT THE SCREW.

## Step 3



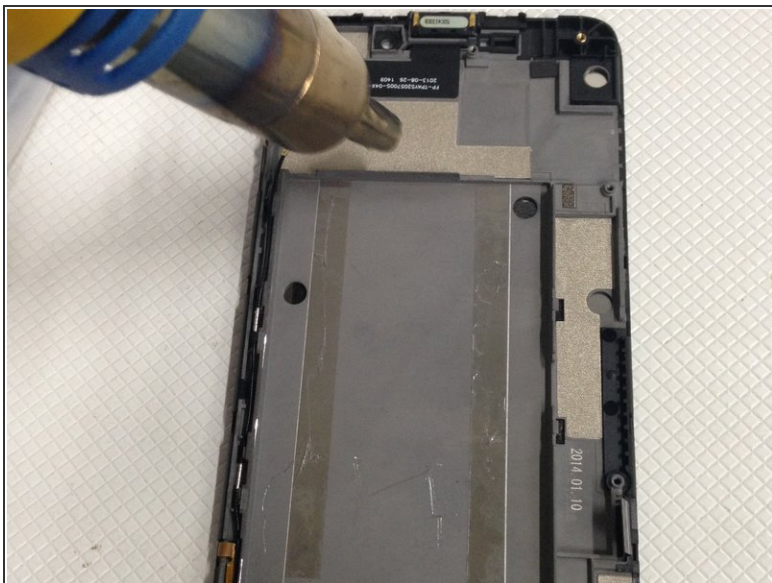
- LIFT UP THE BACK WITH A FLAT HEAD OR A SIMILAR TOOL TO A FLAT HEAD , SO YOU CAN REMOVE THE BACK COMPLETELY

## Step 4



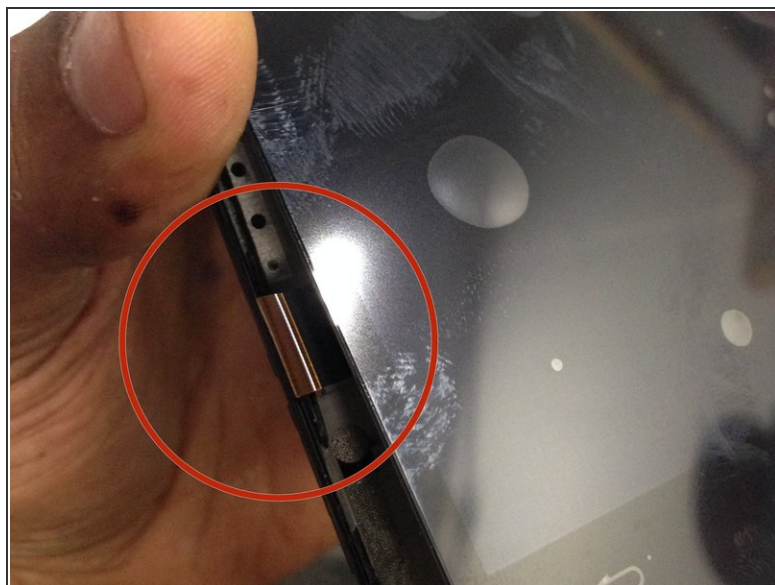
- WITH A PHILLIP SCREW DRIVER REMOVE THOSE OTHER SCREWS.
- WITH A FLAT HEAD REMOVE THE RIBBONS AND THE BATTERY CONNECTORS

## Step 5



WITH A HEATING GUN HEAT THE BACK AND FRONT SO THE GLUE CAN BE REMOVED MORE EASILY

## Step 6



- AFTER YOU APPLY THE ADHESIVE TAPE JUST PUT THE SCREEN ON THE CORRECT POSITION AND MAKE SURE YOU PUSH THE RIBBONS CORRECTLY

To reassemble your device, follow these instructions in reverse order.