



The image displays the complete disassembly of a Nikon Coolpix 3500 digital camera. The components are arranged on a plain white background. Key parts visible include:

- Front Lens Assembly:** Located at the top left, featuring the lens and a small flash unit.
- Main Camera Body:** A silver-colored plastic housing with the LCD screen and control buttons.
- Back Cover:** A silver-colored plastic cover for the back of the camera.
- Main Board:** A green printed circuit board (PCB) with various electronic components, including a microcontroller and memory chips.
- LCD Screen Assembly:** A small, rectangular LCD screen with its associated frame and connectors.
- Battery:** A silver-colored battery pack with a label indicating it is a Nikon EN-EL31 battery.
- Flash Unit:** A silver-colored flash module with a lens and a sensor.
- Other Components:** Various smaller parts, including connectors, a small metal bracket, and a small electronic component.

INTRODUCTION

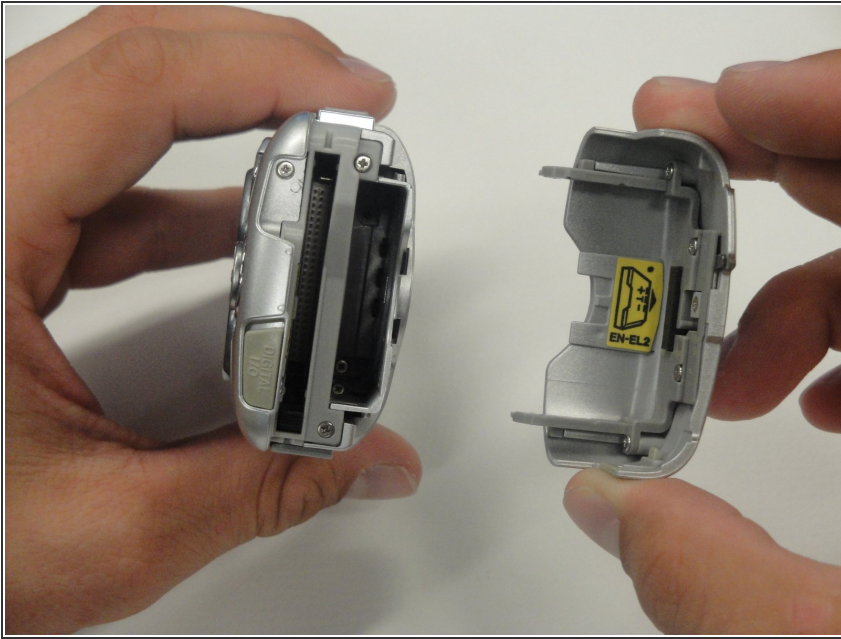
A teardown of the Nikon Coolpix 3500.



TOOLS:

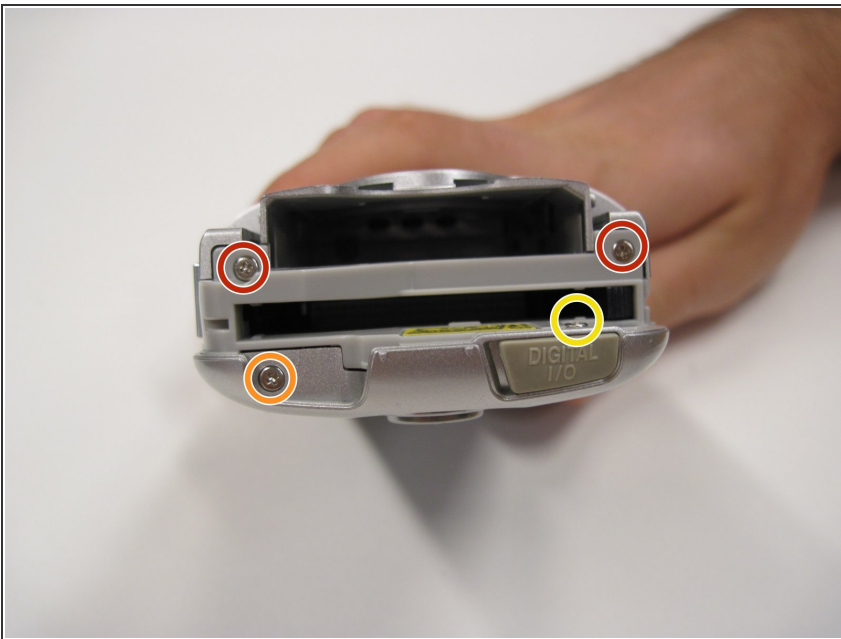
- [Phillips #00 Screwdriver](#) (1)
 - [Spudger](#) (1)
-

Step 1 — Nikon Coolpix 3500 Teardown



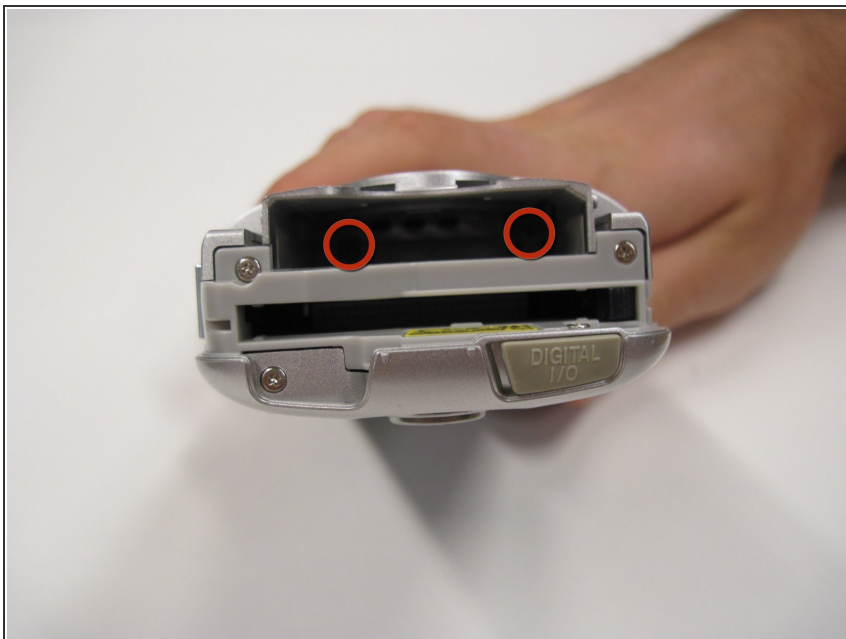
- Remove the battery cover.
- Remove the battery.

Step 2



- Remove two 4.5 mm screws next to the battery slot.
- Remove one 3 mm screw above the CF memory card slot.
- Remove one 4.5 mm screw next to the CF memory card slot.

Step 3



- Remove two 4.5 mm screws from inside the battery slot.

Step 4



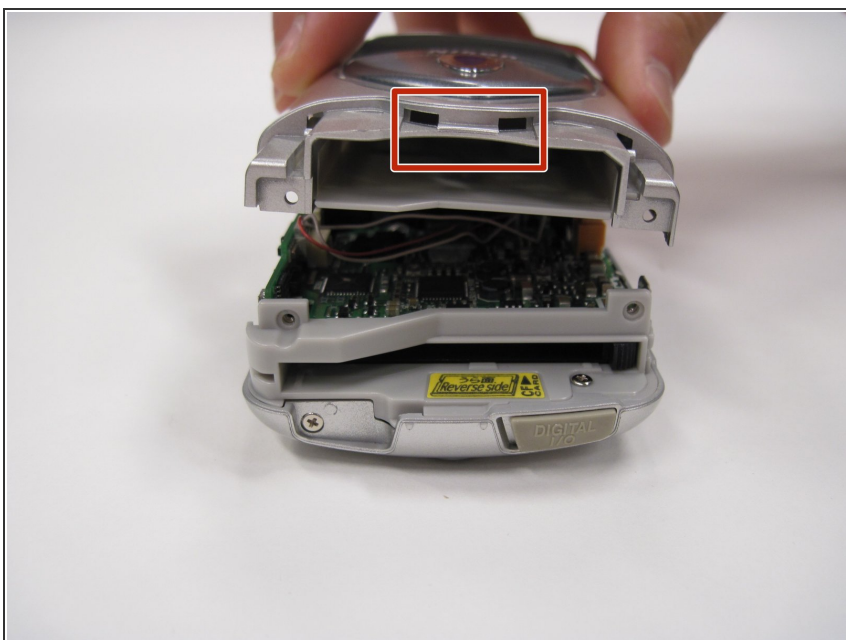
- Remove two 5 mm screws from the opposite end of the battery slot.

Step 5



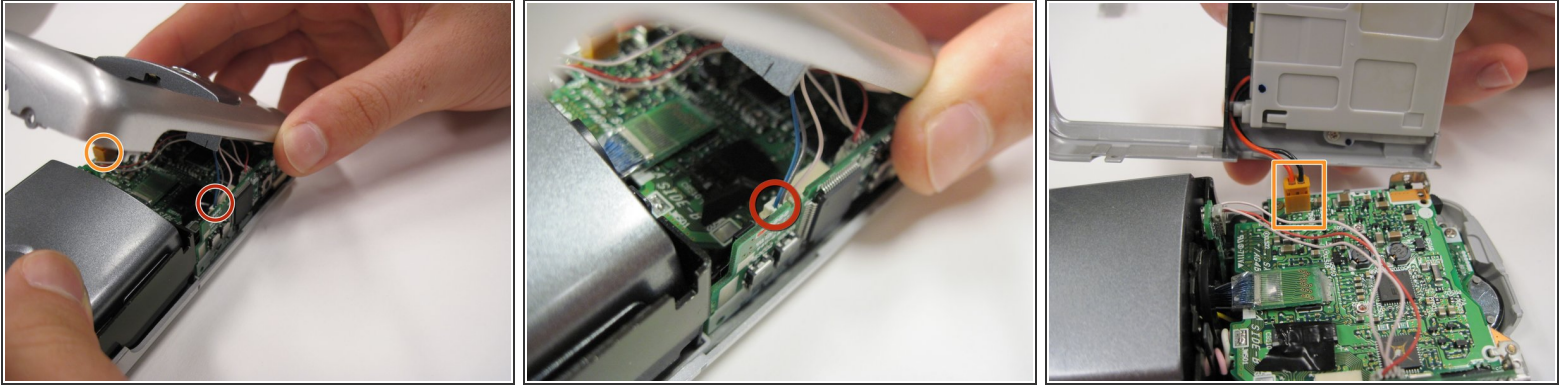
- Remove the plastic cap and the 5 mm screw underneath.

Step 6



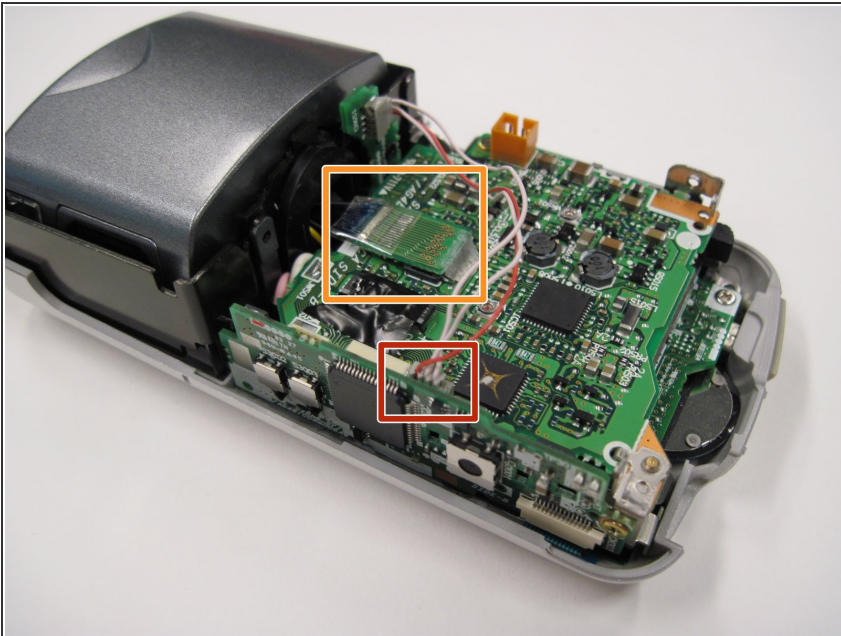
- Remove the five 3.5 mm screws from the bottom of the camera.
- Gently pry off the grey faceplate.
- ⓘ Do not pull hard; there are two wires connecting the faceplate to the motherboard.

Step 7



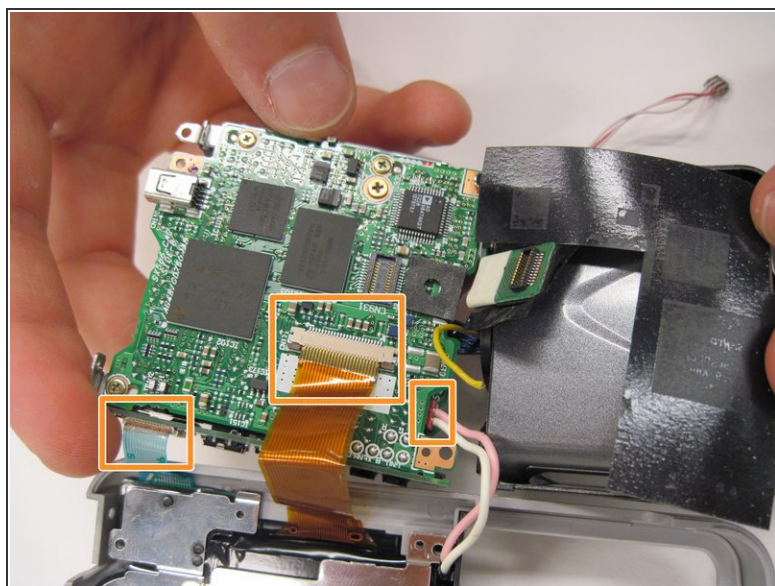
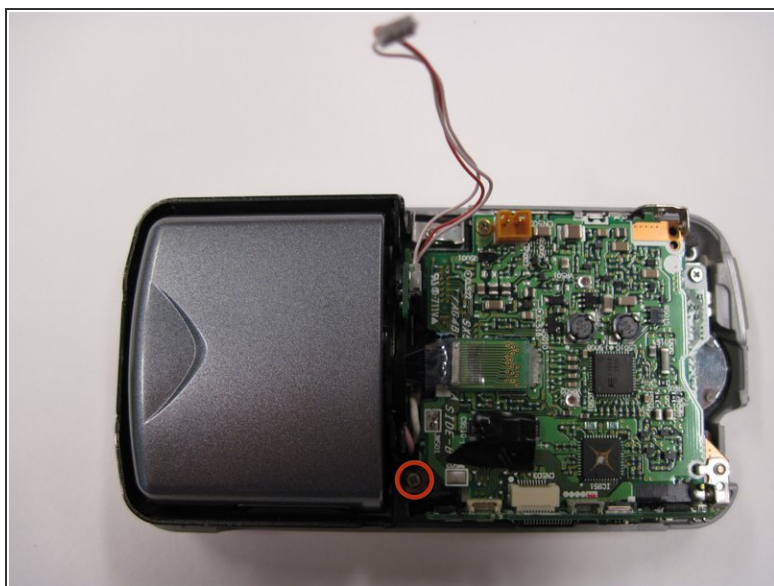
- Use a spudger to disconnect the white-capped wire at the bottom of the camera.
- Use a spudger to disconnect the orange-capped wire at the bottom of the camera and set the faceplate aside.

Step 8



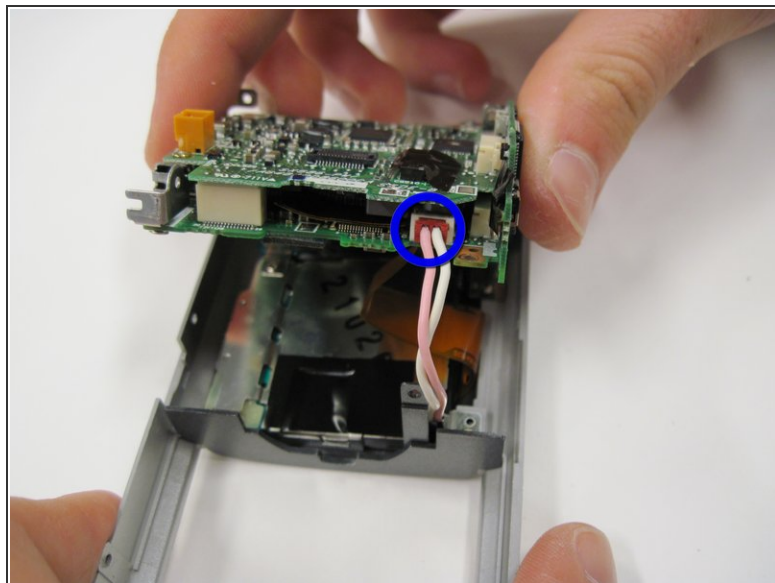
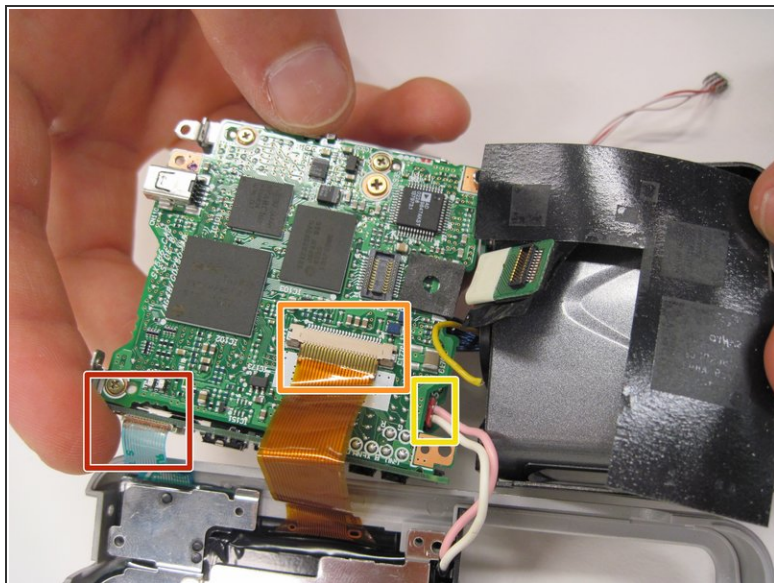
- Disconnect the grey-capped wires from the motherboard.
- Disconnect the blue wire attached to the green chip from the center of the motherboard.

Step 9



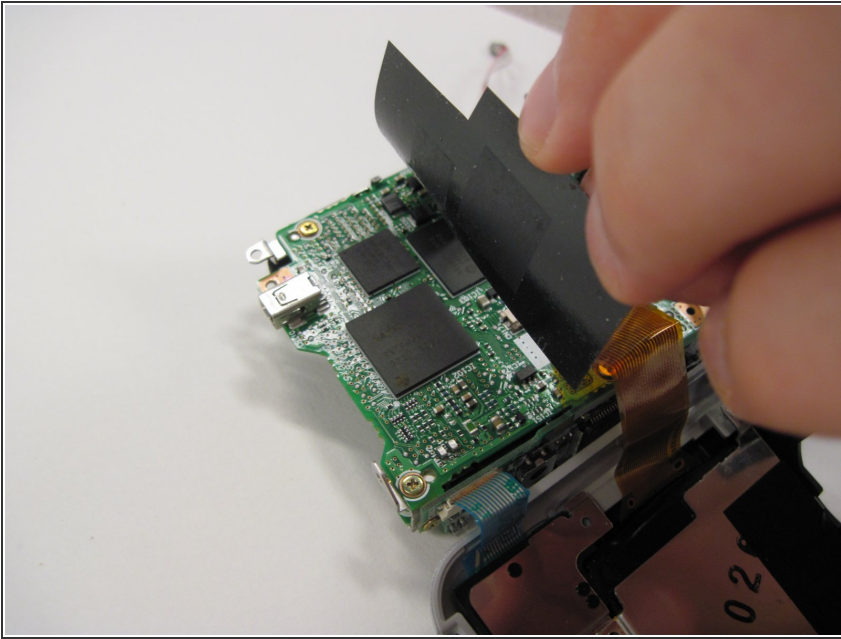
- Remove the 3.5 mm screw from the motherboard next to the rotating lens.
- Flip the motherboard and lens over to access the three wires on the back that connect to the LED screen.

Step 10



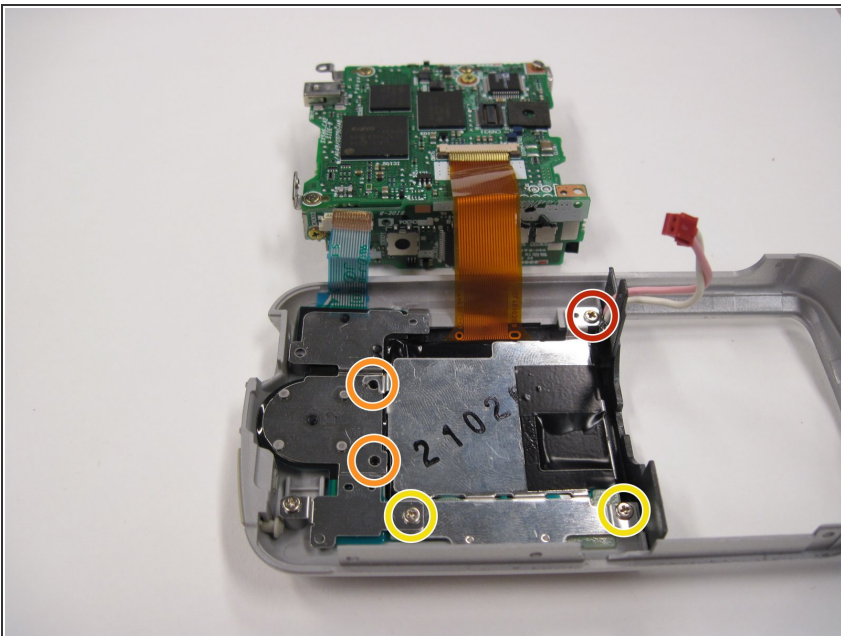
- Disconnect the blue wire connecting the motherboard to the LED screen.
- Disconnect the orange wire using a spudger while pushing out horizontally.
- Disconnect the red capped wire from the motherboard.
- Lift the motherboard and lens (still connected) out of the back case.

Step 11



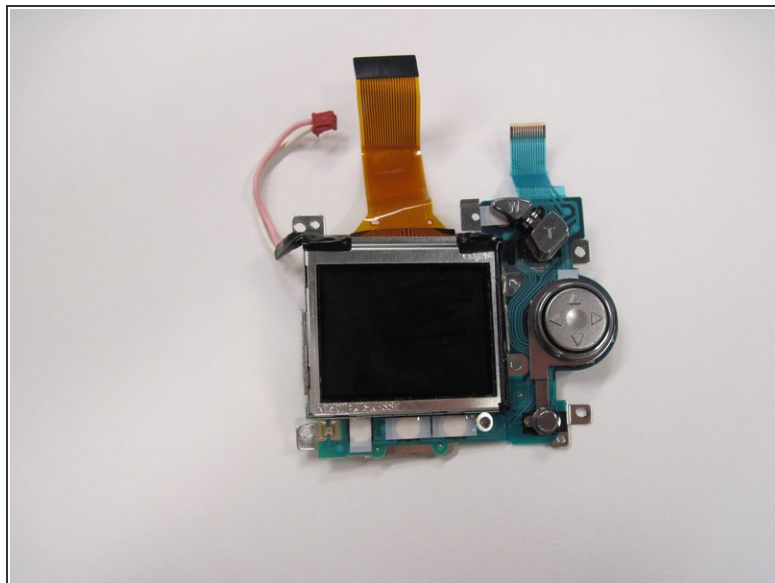
- Lift up on the black covering and remove the orange wire connecting the lens to the motherboard.

Step 12



- Remove the 2.5 mm screw next to the red capped wire.
- Remove the two 3.4 mm screws on the back of the directional buttons.
- Remove the two 4.4 mm screws in the metal plate across from the orange wire.

Step 13



- Gently lift the LED screen out of the remaining casing and set it aside.

⚠ Be careful not to let the rubber backing of the buttons fall out of place.

To reassemble your device, follow these instructions in reverse order.