



Acer Aspire E1-571 - HDD / RAM Memory / WiFi card Replacement

Acer Aspire E1-571 - HDD / RAM Memory / WiFi card Replacement

Written By: ZFix



INTRODUCTION

This manual will help you if you want to change or upgrade your SATA HDD to SSD or DDR3 RAM Module or if you want to replace your not working WiFi card.

When you doing this, do not rush !!!

[Please SUBSCRIBE to my channel ツ](#)

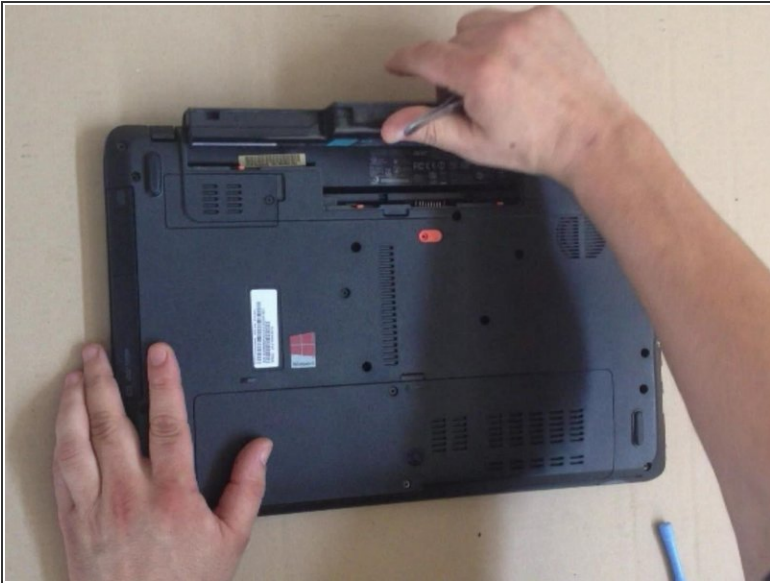
[video: <http://youtu.be/SZKOM87Ho78>]



TOOLS:

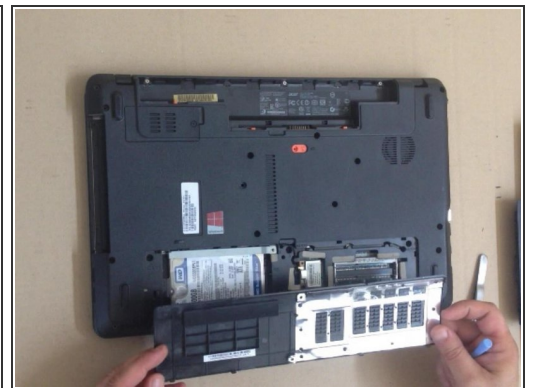
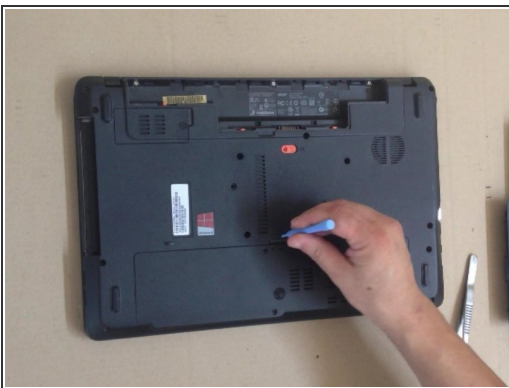
- [iFixit Opening Tools](#) (1)
 - [Phillips #1 Screwdriver](#) (1)
-

Step 1 — HDD / RAM Memory / WiFi card



- Remove the battery.
- Unscrew 2x screws M 2.5x8.0

Step 2



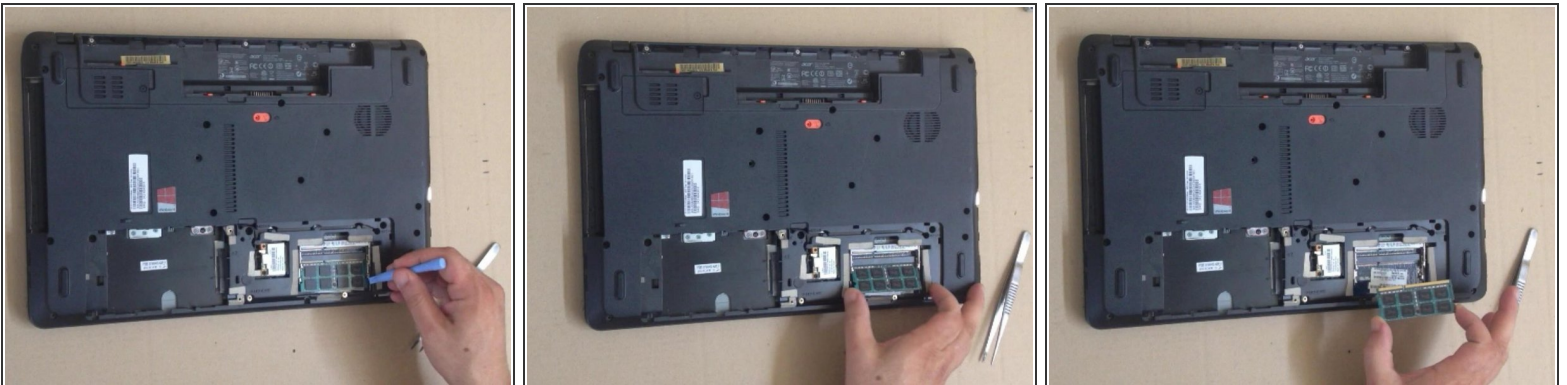
- With a plastic tool remove the Memory RAM / Hard Drive / Wifi Cover Door

Step 3



- Drag the SATA HDD to release it.
- Unscrew 4x screws to remove the disk from the HDD Caddy Holder.

Step 4



- Use plastic tool to release the DDR3 RAM memory module from the locking clips.
- The RAM memory modules have a key notch position to prevent putting the board incorrectly.

Step 5



- To release the Half Mini PCI WiFi card, unscrew the screw and disconnect the coaxial antenna cable.
- **Did you do it successfully?**
- .



[Please SUBSCRIBE to my channel ツ](#)

To reassemble your device, follow these instructions in reverse order.