



SleepTracker Elite Battery Replacement

Replace the battery in the SleepTracker watch.

Written By: Mark Boszko





TOOLS:

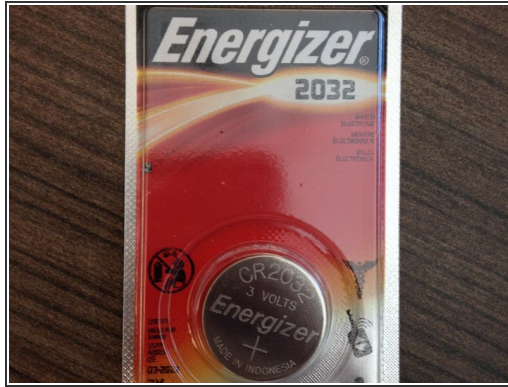
- [Phillips #0 Screwdriver](#) (1)
- [Spudger](#) (1)



PARTS:

- [CR2032 Lithium Battery](#) (1)

Step 1 — Battery



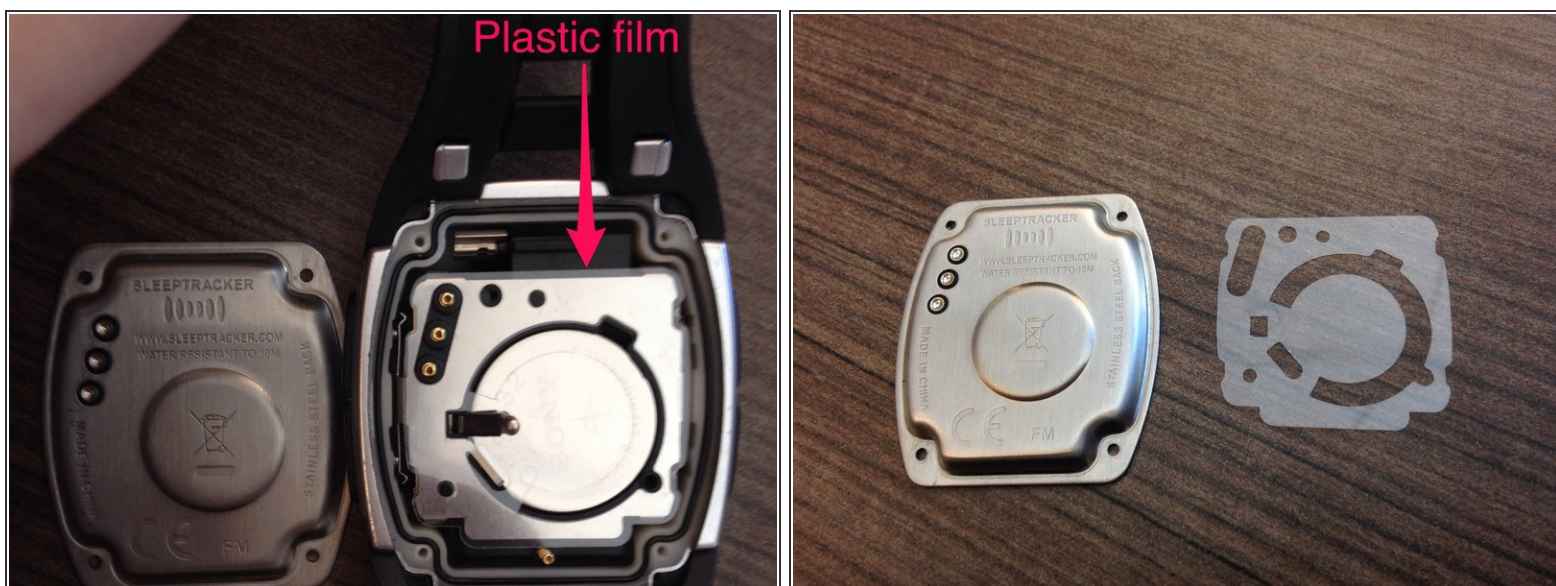
- You will need:
 - CR 2032 Battery
 - Philips #0 screwdriver
 - Something to pop the battery out, like a thin spudger, or a #2 slot screwdriver.

Step 2



- Remove these four screws. They're all the same size.

Step 3



- Lift off the case back.
- Underneath, you'll see a sheet of plastic film. It should be possible to remove the battery without removing the film, if you're careful, but I didn't want to risk bending or tearing the plastic.
- If you do take the plastic off, beware of maneuvering it over the three springs in the upper left, and the small prong that sticks out over the battery. You'll need to be sure to arrange the plastic carefully over these obstructions when re-assembling.

Step 4



- Insert spudger or flat screwdriver in the notch indicated by the arrow, and lever out the battery.
- The new battery should insert the same way the old one came out, and snap into place.

To reassemble your device, follow these instructions in reverse order.