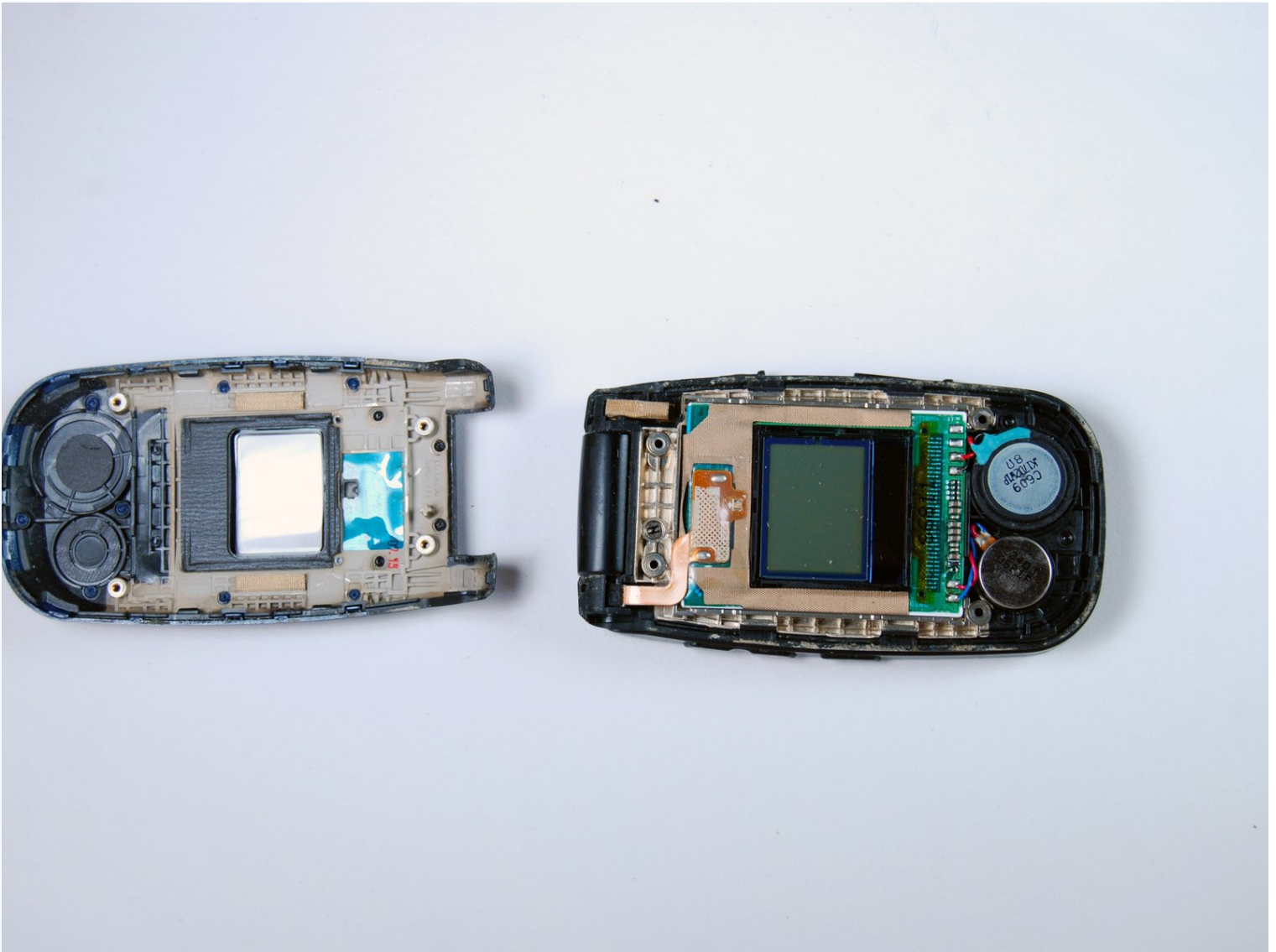




LG LX150 Front Cover Replacement

Use this guide to remove the LG LX150's front...

Written By: Tye Barba



INTRODUCTION

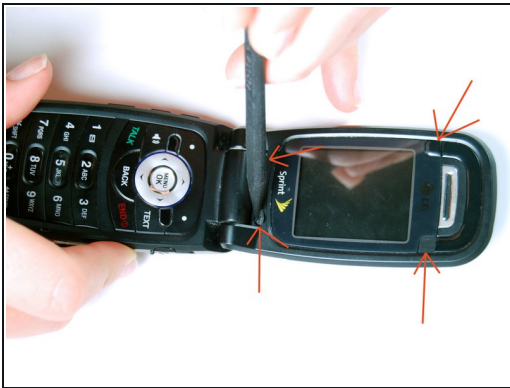
Use this guide to remove the LG LX150's front cover.

TOOLS:

Phillips #00 Screwdriver (1)

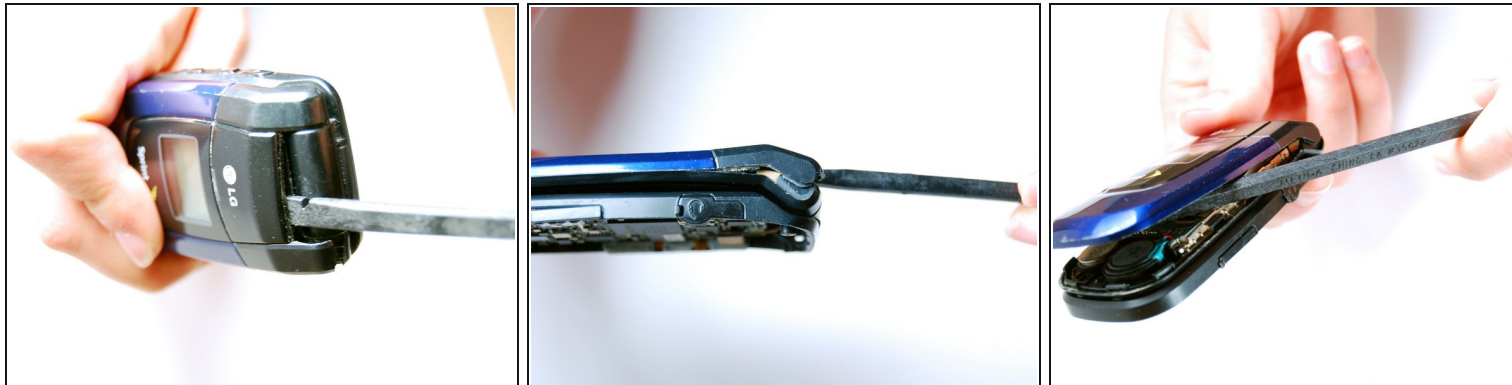
Spudger (1)

Step 1 — Front Cover



- Use the spudger to pry out the indicated rubber squares.
- Use the #0 Phillips screwdriver to take out the revealed screws.

Step 2



- Carefully lodge the spudger between the face plate and the hinge mechanism.
 - Gently pry the face plate until it releases from place holders.
-

To reassemble your device, follow these instructions in reverse order.