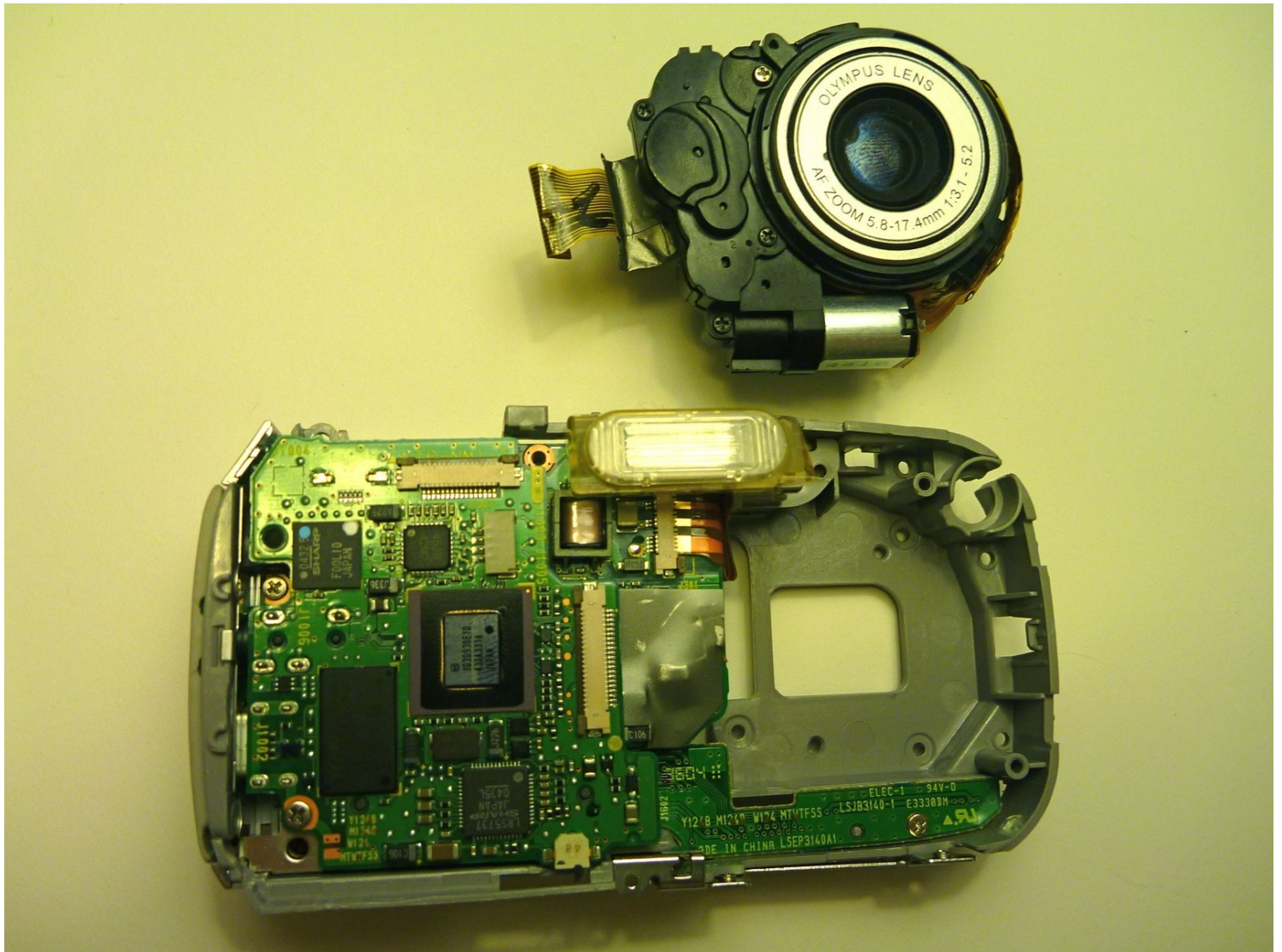




Olympus D590 Lens Replacement

This guide shows how to replace the camera lens...

Written By: Joshua



INTRODUCTION

This guide shows how to replace the camera lens and surrounding mechanisms (including the motor) on an Olympus D590.

TOOLS:

[iFixit Opening Tool](#) (1)

[Phillips #00 Screwdriver](#) (1)

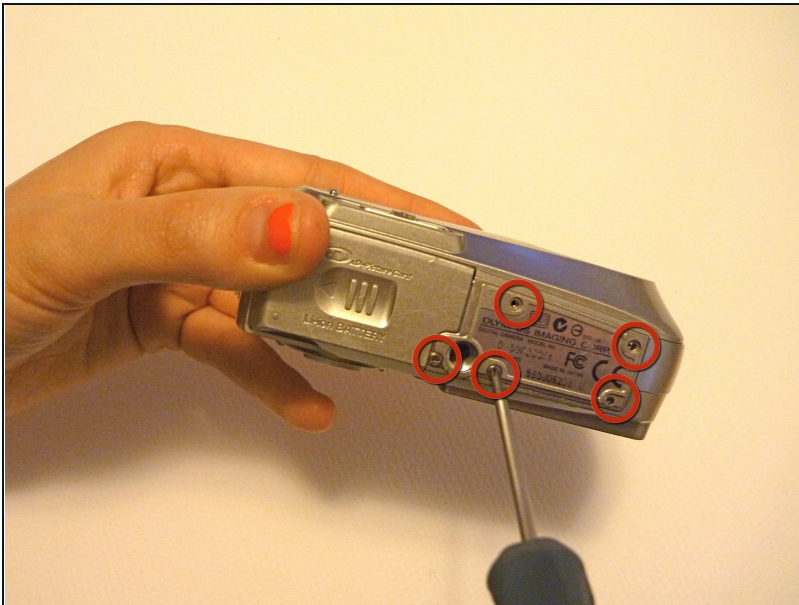
[Flathead 3/32" or 2.5 mm Screwdriver](#) (1)

[Tweezers](#) (1)

Optional, but helpful

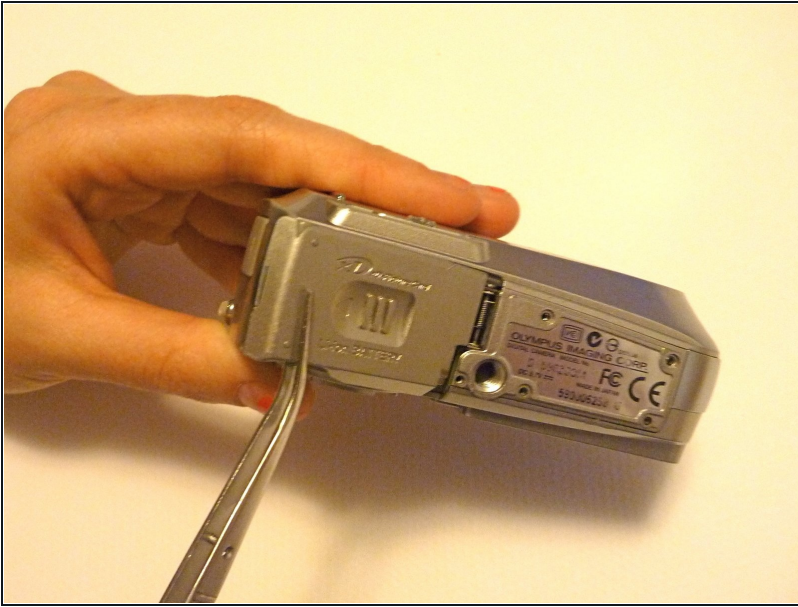
[Phillips #0 Screwdriver](#) (1)

Step 1 — Face Plate



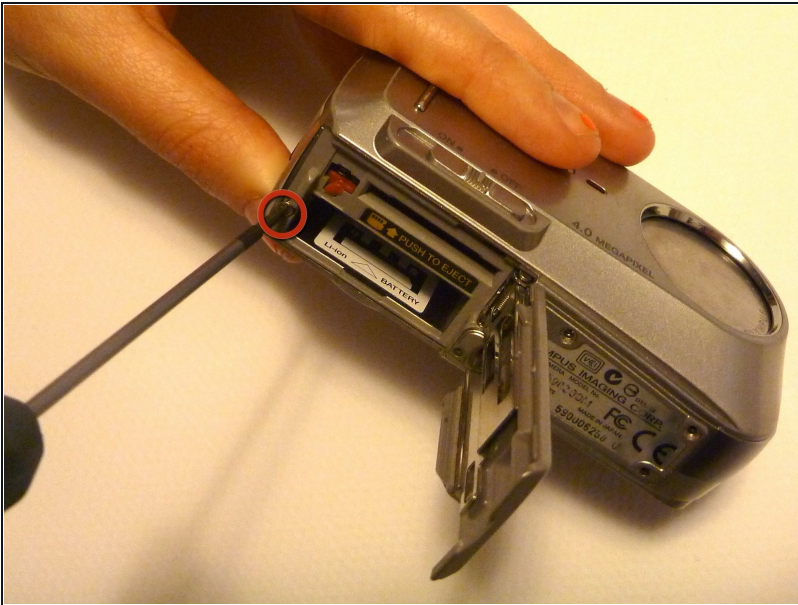
- Remove five baseplate screws using a Phillips #00 screwdriver.

Step 2



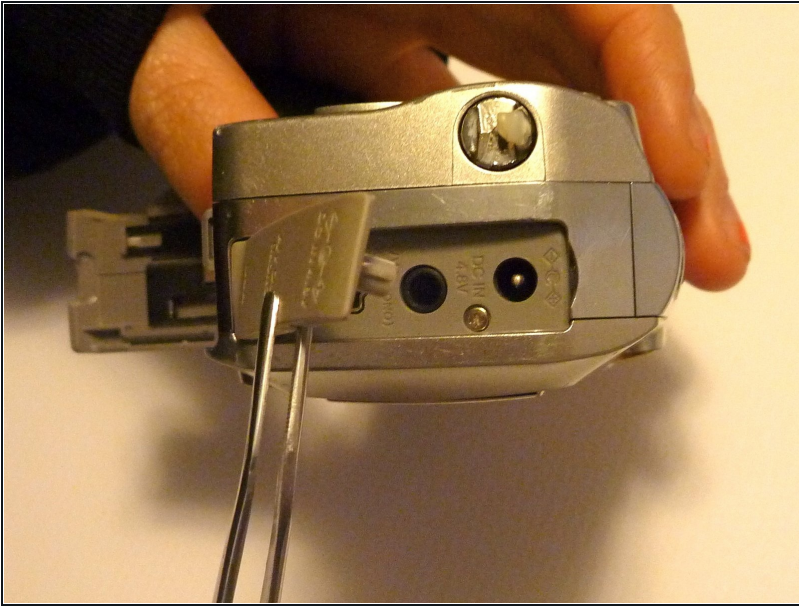
- Press and slide the battery cover retainer clip to the left. Use [tweezers](#) to lift the battery cover away.

Step 3



- Remove the single screw from the battery housing using a Phillips #00 screwdriver.

Step 4



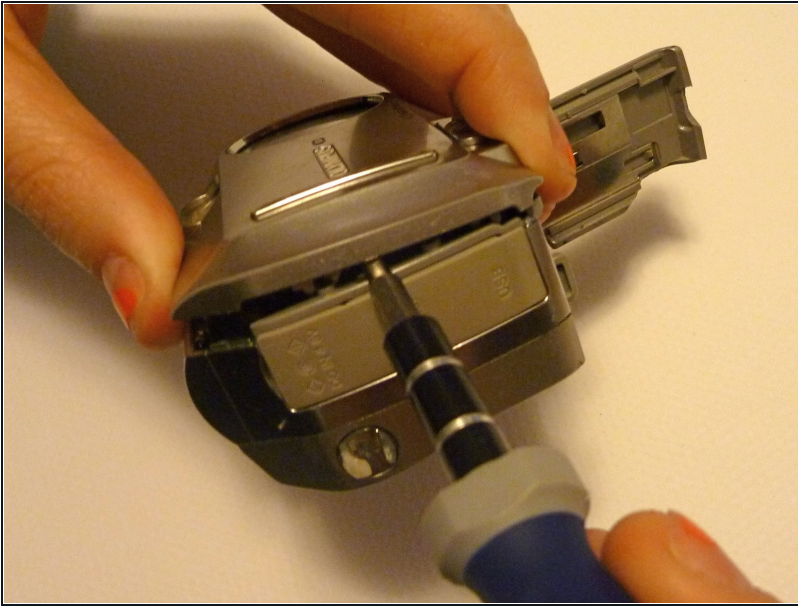
- Using tweezers, lift the rubber plate to expose the ports.

Step 5



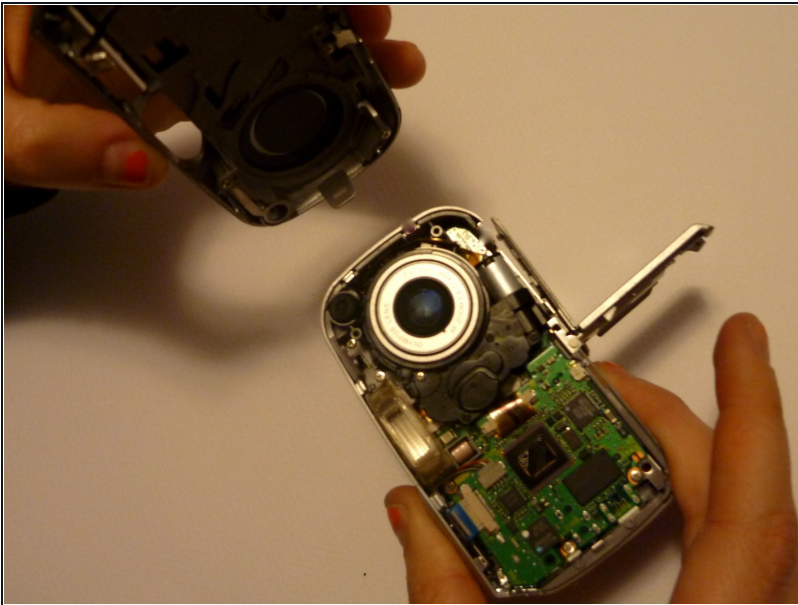
- Remove two screws from the ports using a Phillips #00 screwdriver.

Step 6



- Use a spudger to pry the faceplate away from the rest of the camera.

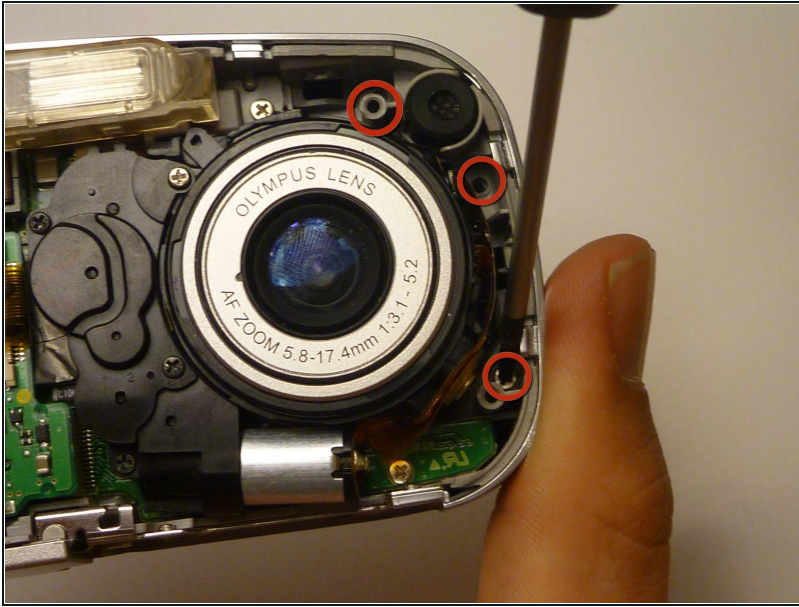
Step 7



- To avoid disconnection of the connector line to the motherboard, use caution when pulling faceplate away from camera case.

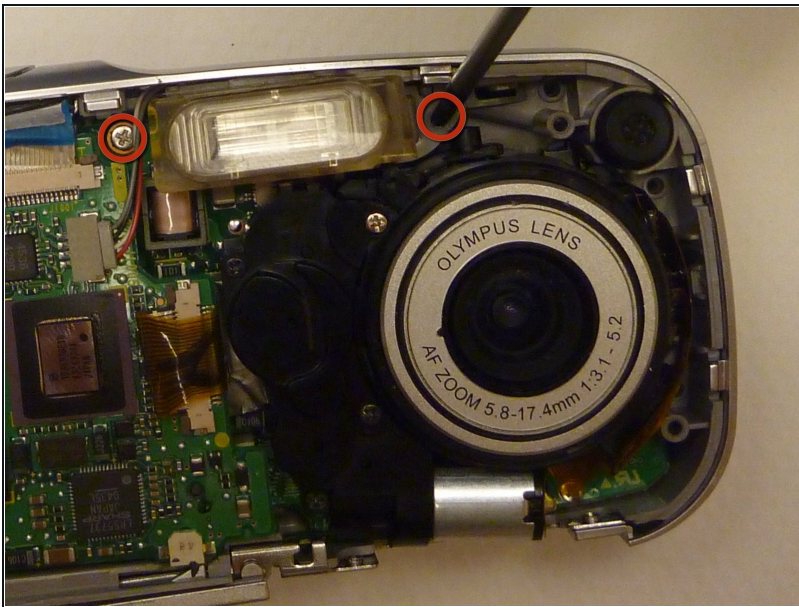
⚠ Damage to the connector line will prevent the on/off power switch's operational function.

Step 8 — Backplate



- Using a Phillips #00 screwdriver, remove three screws fastened to the camera backplate edge.

Step 9



- Using a Phillips #00 screwdriver, remove the two camera flash screws secured to either side of bulb housing component.

Step 10



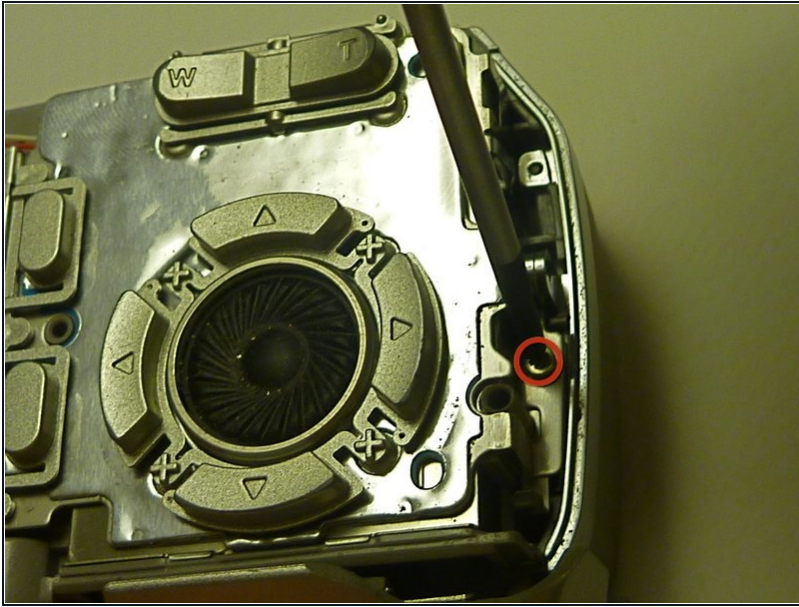
- Using an iFixit opening tool, pry the backplate from the camera internal housing component.

Step 11



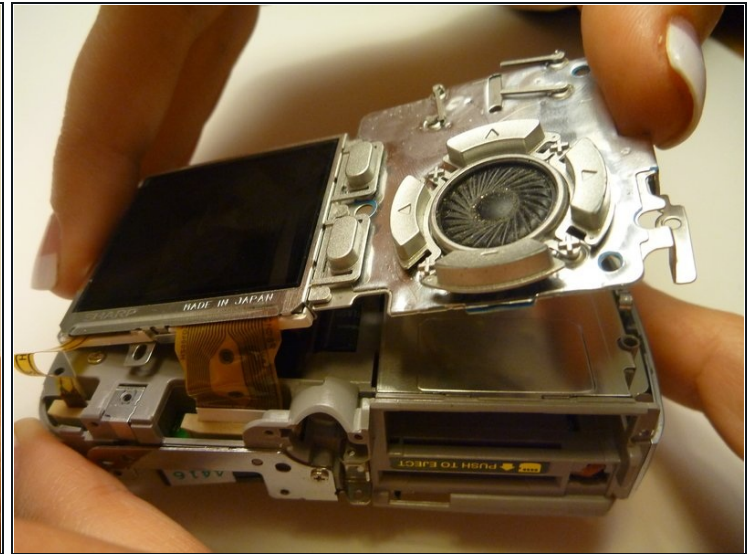
- Pull the backplate away from the camera internal housing component.

Step 12 — LCD Screen



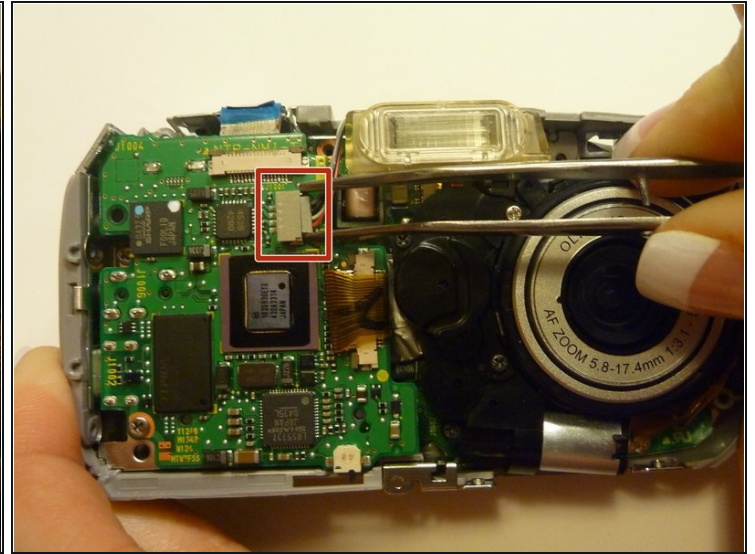
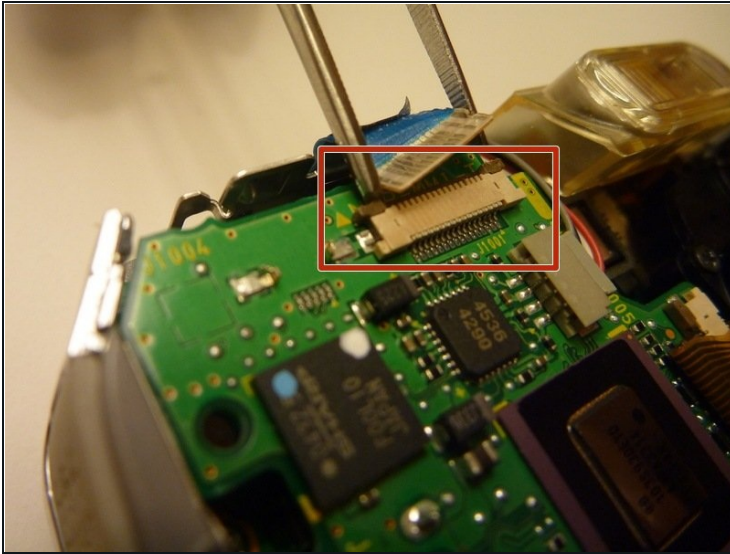
- Remove one screw Phillips #00 from the right side of the LCD screen camera internal housing component.

Step 13



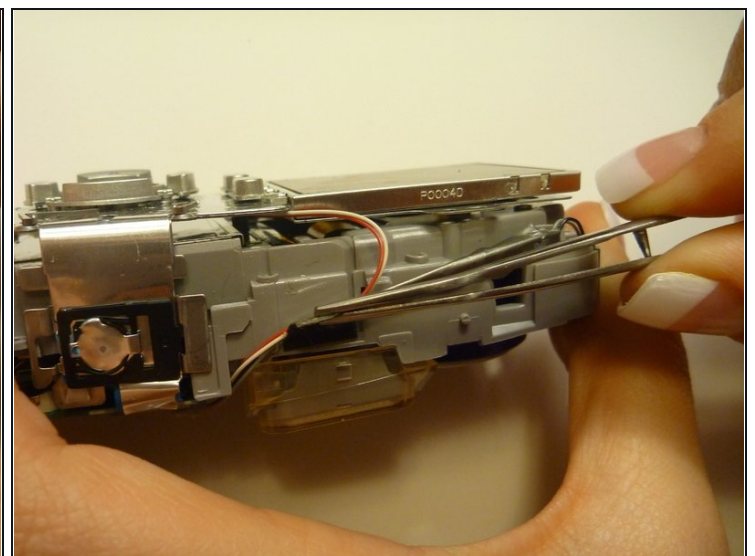
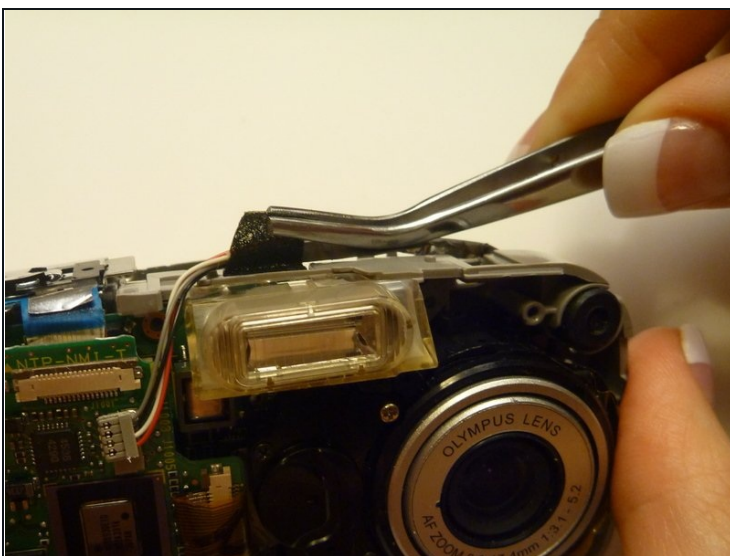
- To check that all screws are removed from the exterior side panel, gradually slide and lift no more than 3cm away from the camera internal component body.

Step 14



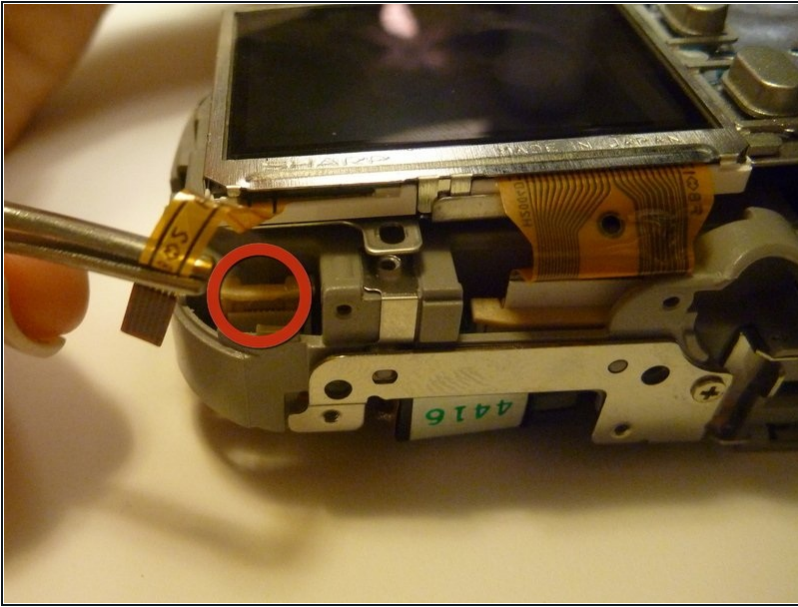
- View the front of the camera internal housing component.
 - Using [tweezers](#), detach the gray connector and blue wiring tape.
- ⚠ Be cautious to gently wiggle and pull blue wiring tape and gray wire connector during detachment.

Step 15



- View the top of the camera internal housing component.
- Using tweezers, gently lift the black tape exposing all connector wires.

Step 16

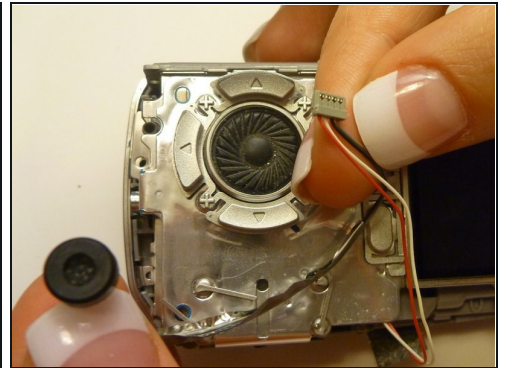
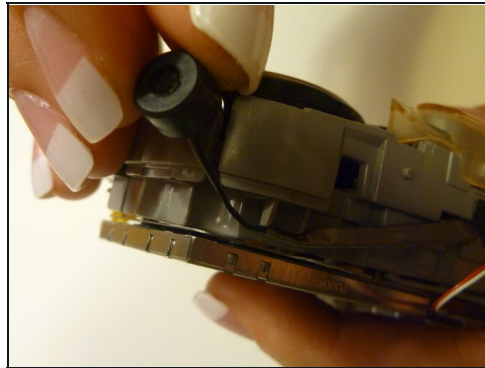


- View the bottom of the camera internal housing component.

⚠ Caution: Keep yellow taped wire attached to the LCD screen.

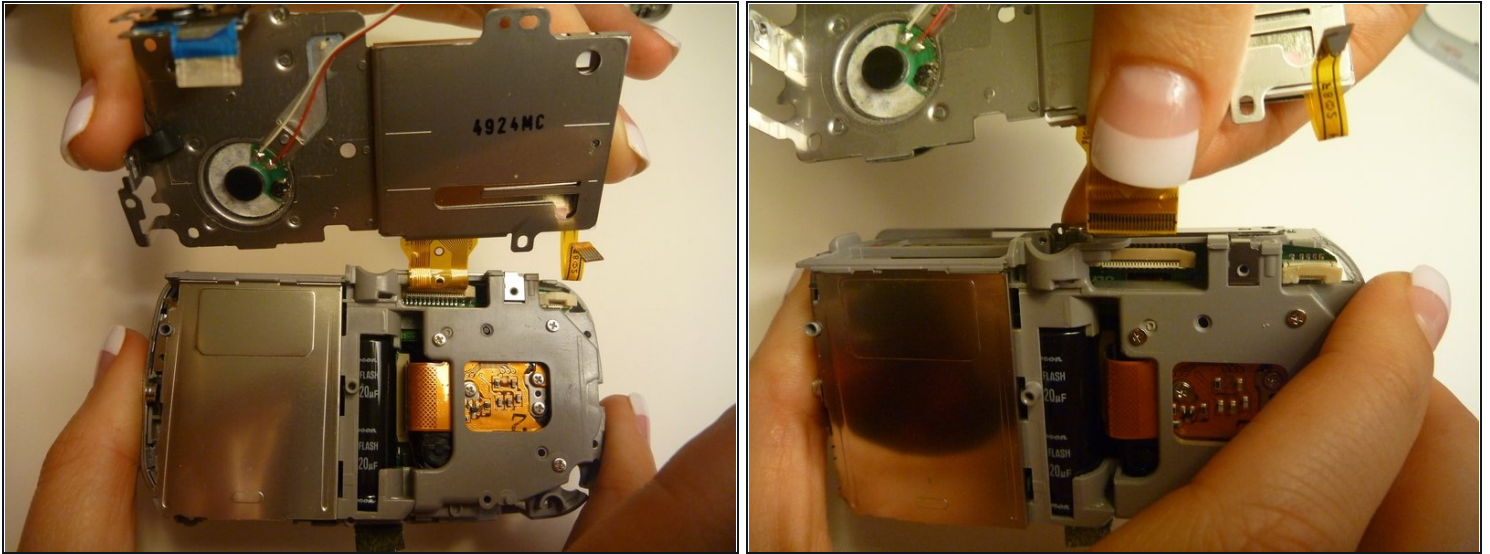
- Use tweezers to gently wiggle, pull, and detach tape from the surface of the camera internal housing component.

Step 17



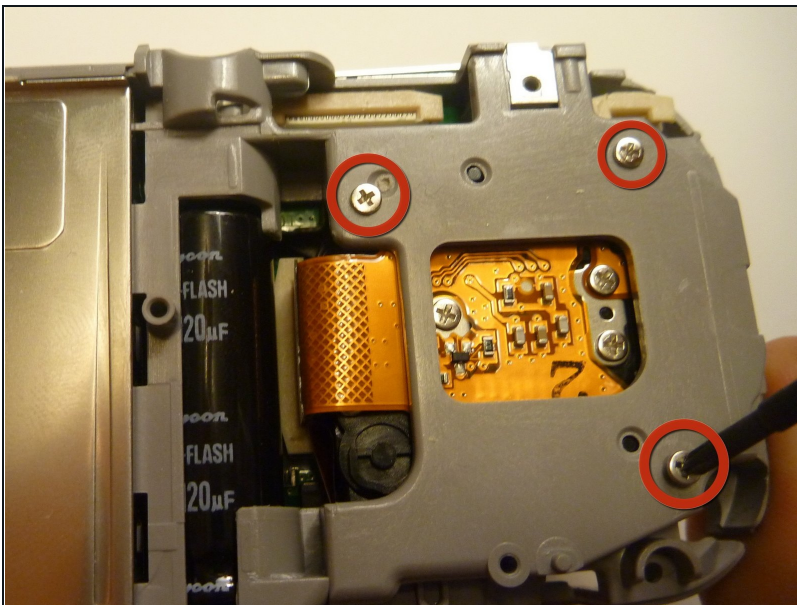
- View the front of the camera internal housing component.
- Using tweezers, gently lift the speaker, cautiously maneuvering the wire away from the side of the internal housing component toward the front of the camera internal housing component.

Step 18



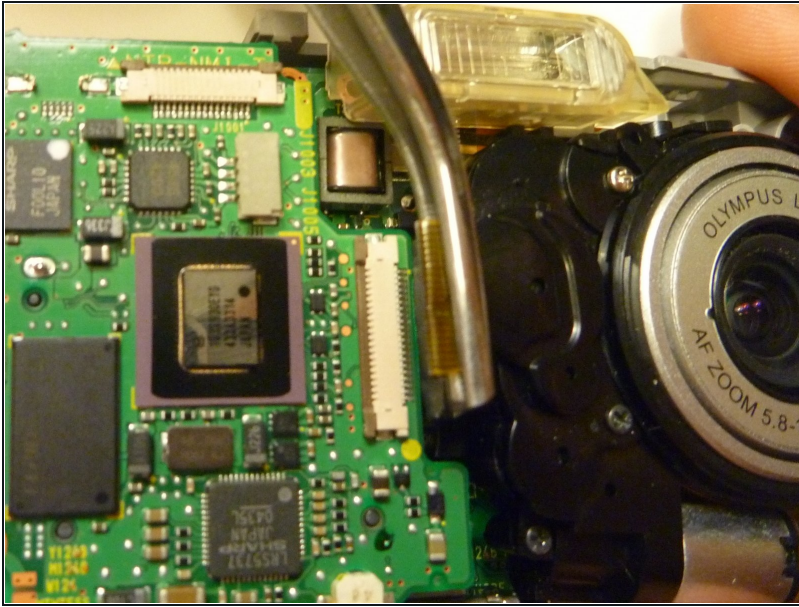
- Gently lift the LCD screen away from the camera internal housing component hinging the thick yellow wiring tape attached to the camera internal housing component.
- Use a forefinger and thumb to gently pull the thick yellow wiring tape out of the camera internal housing component.

Step 19 — Lens



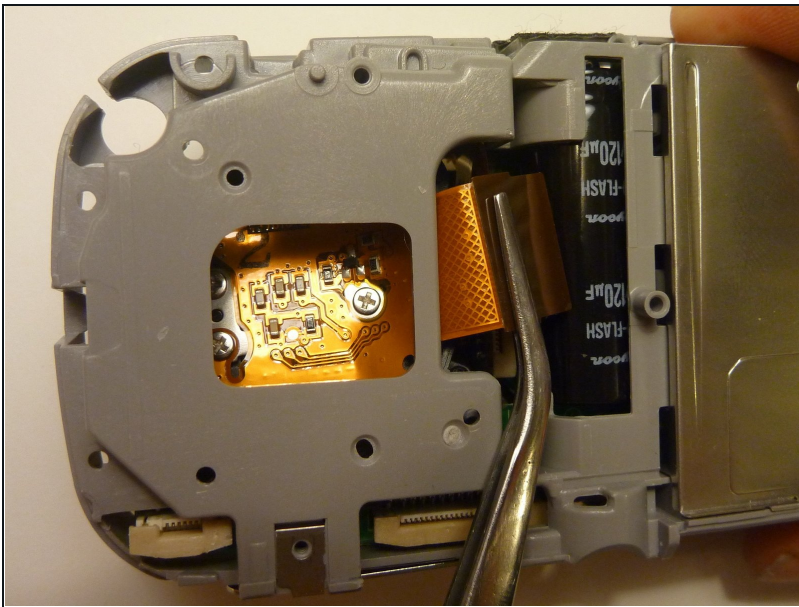
- Flip the camera so you are looking at the back.
- Looking at the back of the camera, remove the 3 screws behind the camera lens.

Step 20



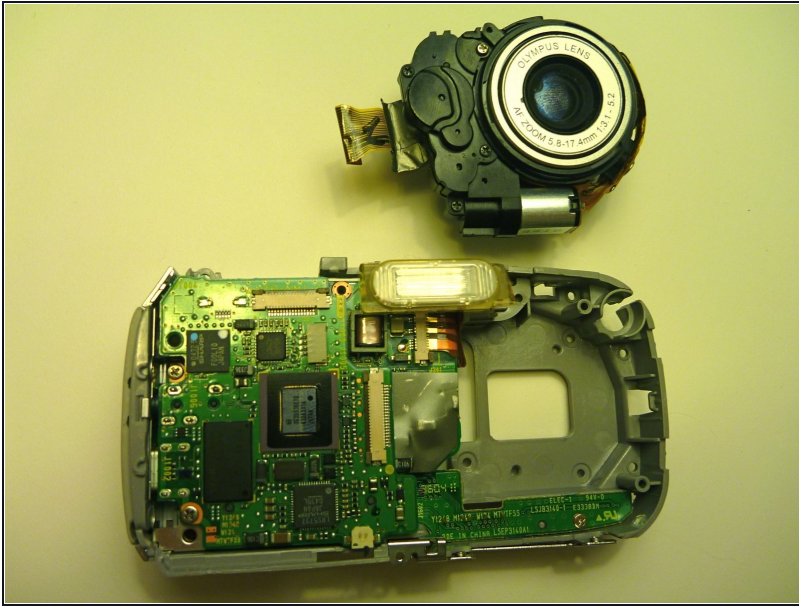
- Flip the camera so that the front lens is facing up.
- Disconnect the lens from the logic board.

Step 21



- Flip the camera back over so that the back of the camera is facing you, and the lens is facing away.
- Disconnect the wire that connects the logic board to the lens assembly.
 - ① Gently pull back on the wire to disconnect it safely.

Step 22



- Flip the camera back around so that the front is facing you.
- Carefully lift the lens assembly out of the camera.

To reassemble your device, follow these instructions in reverse order.