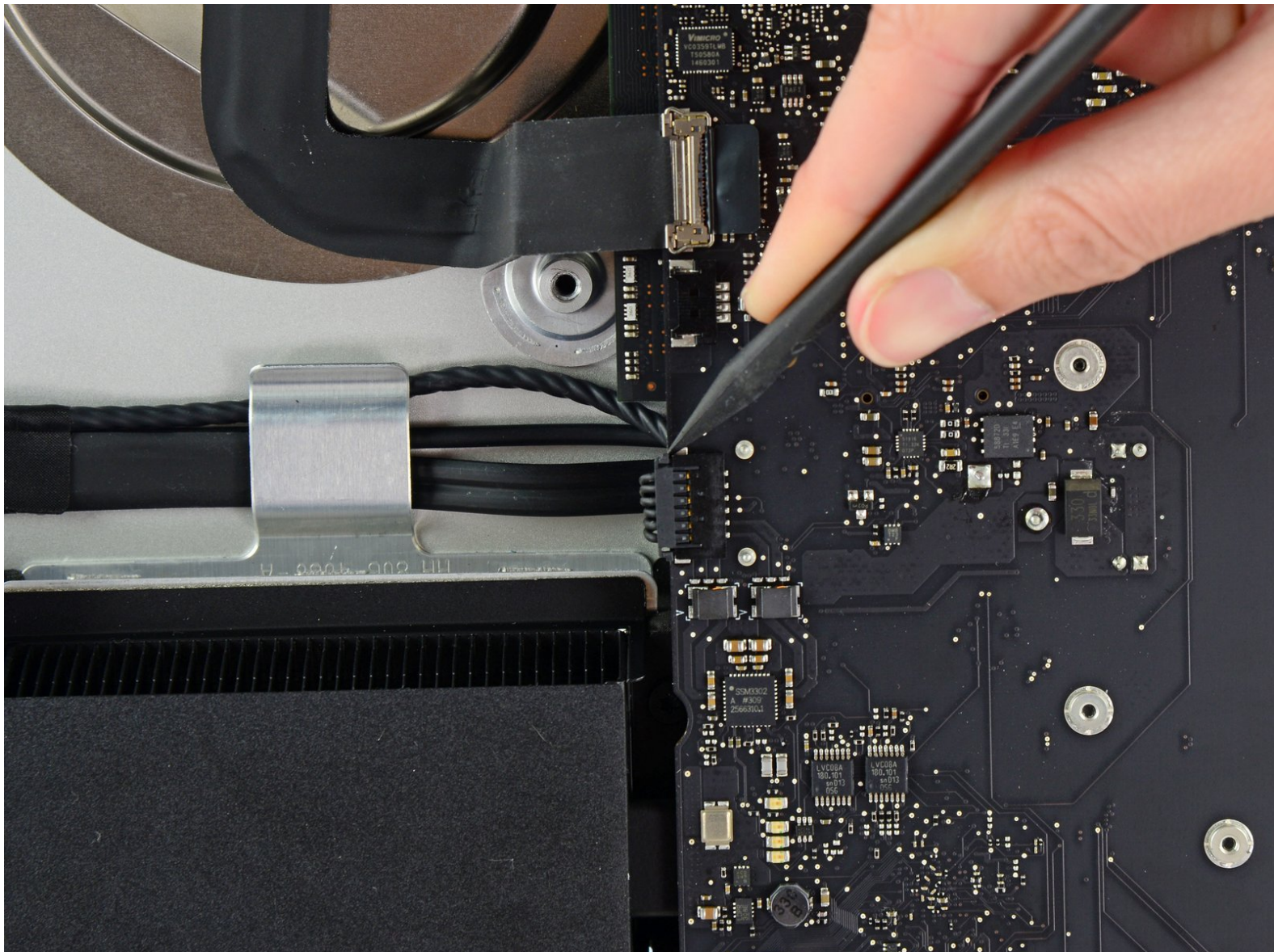




iMac Intel 21.5" EMC 2638 Logic Board Assembly Replacement

Prereq for removing logic board.

Written By: Sam Goldheart



INTRODUCTION

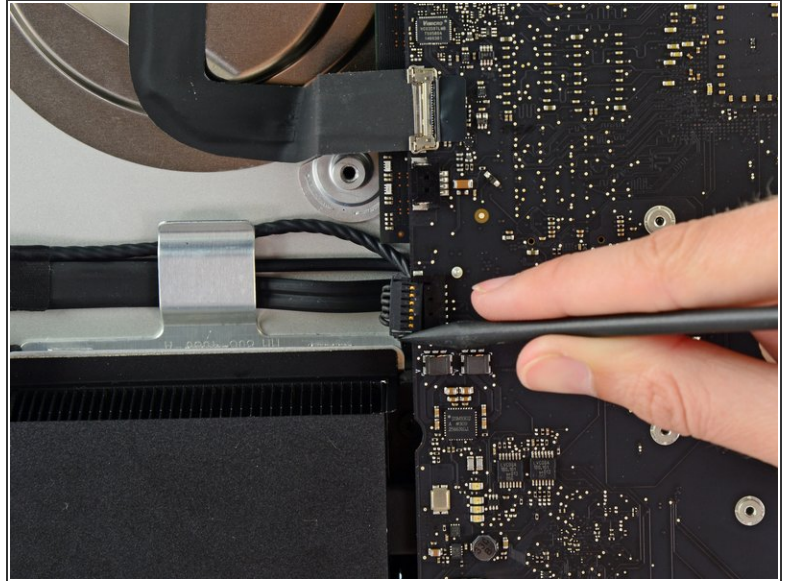
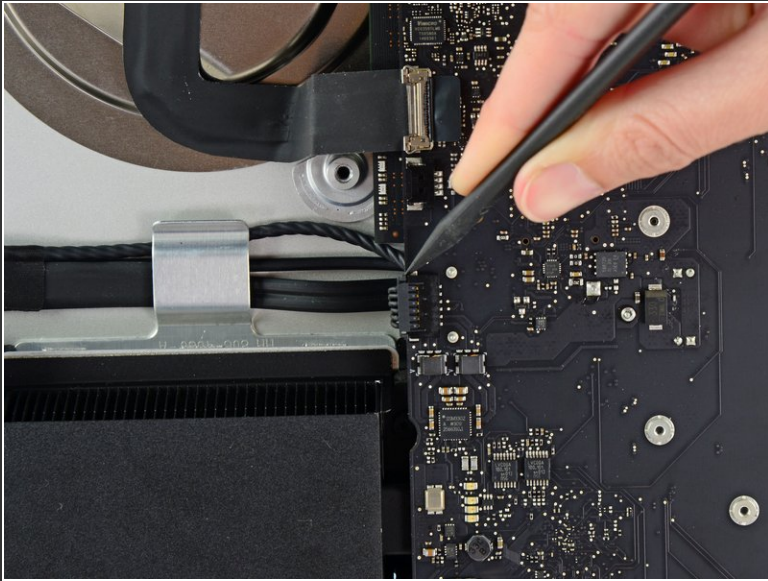
Prereq for removing logic board.



TOOLS:

- [Spudger](#) (1)
 - [Tweezers](#) (1)
 - [T8 Torx Screwdriver](#) (1)
-

Step 1 — Logic Board Assembly



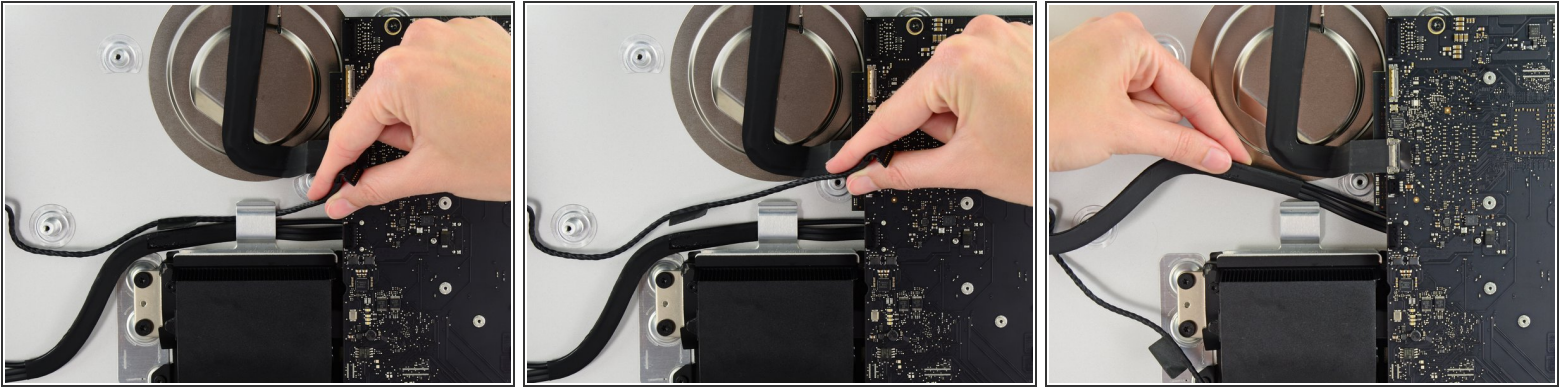
- Push on each side of the left speaker cable connector with the tip of a spudger and gently *walk* it out of its socket.

Step 2



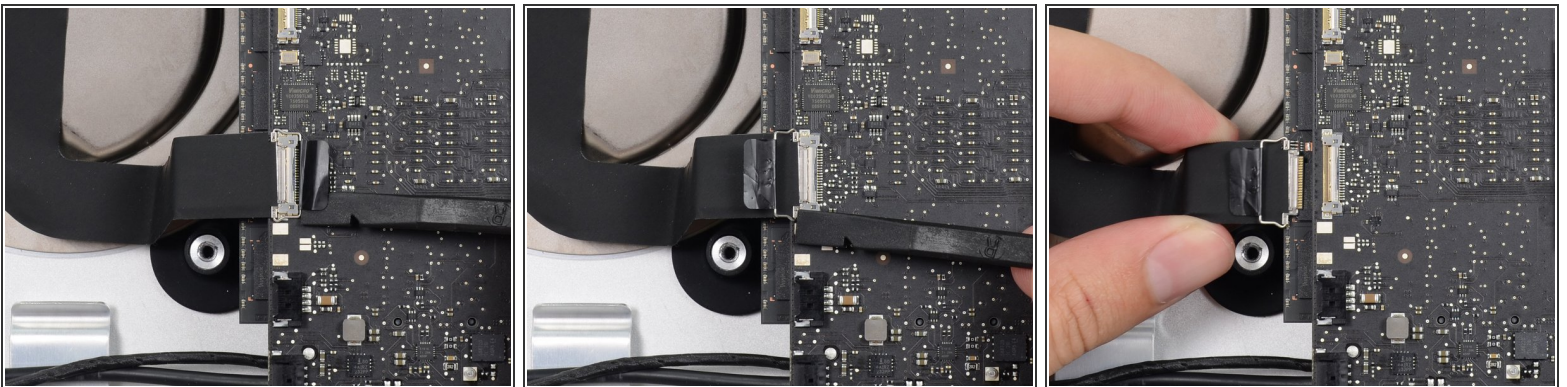
- If necessary, use a pair of tweezers to gently peel the tape securing the left speaker cable to the SATA data/power cable.
- ⓘ This tape only needs to be removed if you are removing the left speaker.

Step 3



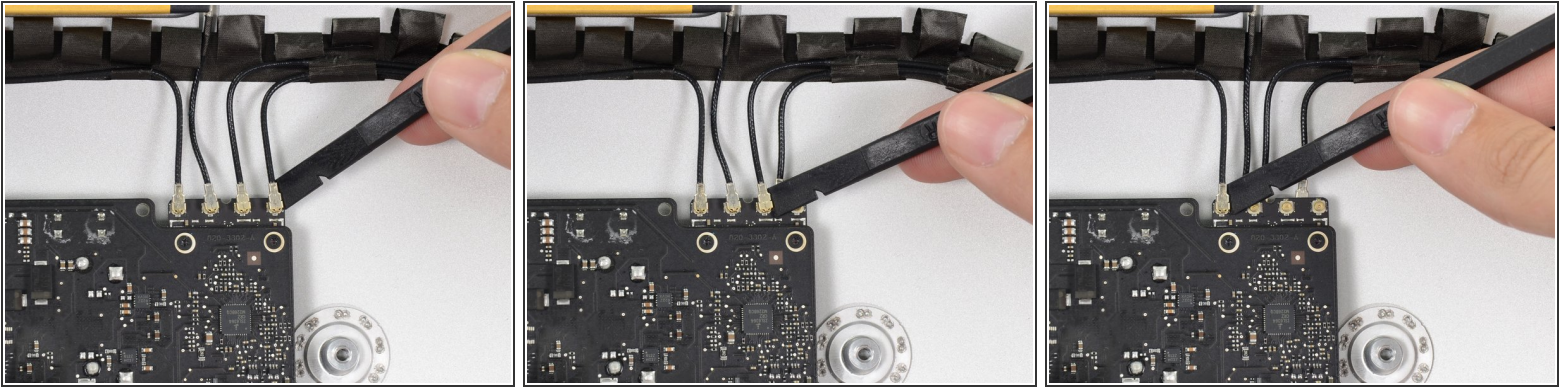
- De-route the left speaker cable by pulling it straight up out of the retaining clip in the back of the rear enclosure.
- ⓘ In a similar fashion, lift the combo SATA data/power cable up out of the retaining clip.

Step 4



- Use the flat edge of a spudger to flip up the metal retaining bracket on the iSight camera cable connector.
 - Pull the iSight camera cable straight out of its socket on the logic board.
- ⚠ Do **not** use excessive force. This is a delicate connector that can be easily damaged.

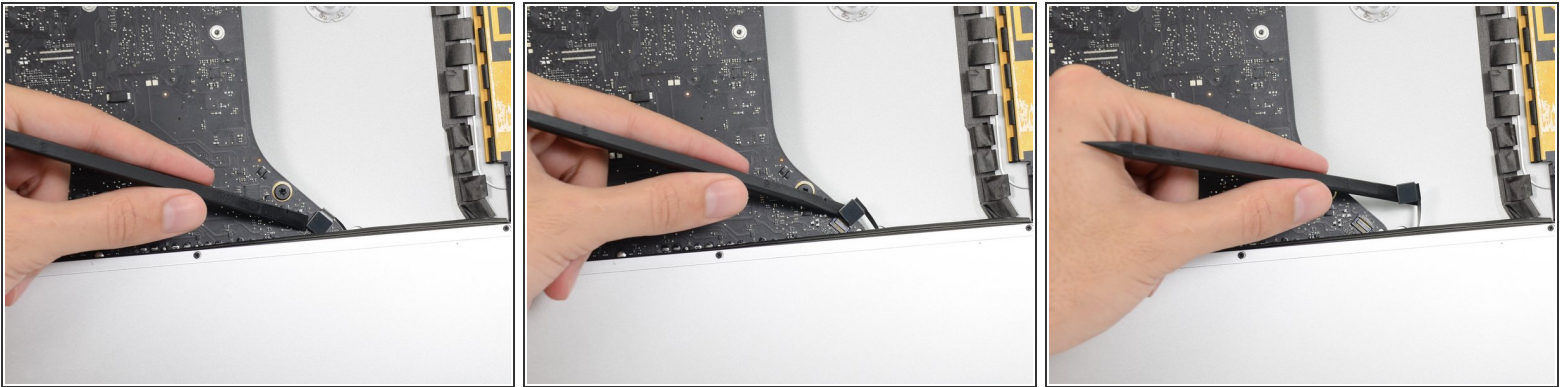
Step 5



- Use the flat edge of a spudger to disconnect each of the four antenna connectors from the AirPort/Bluetooth card.

☞ Note the original positions for each connector when reconnecting the cables.

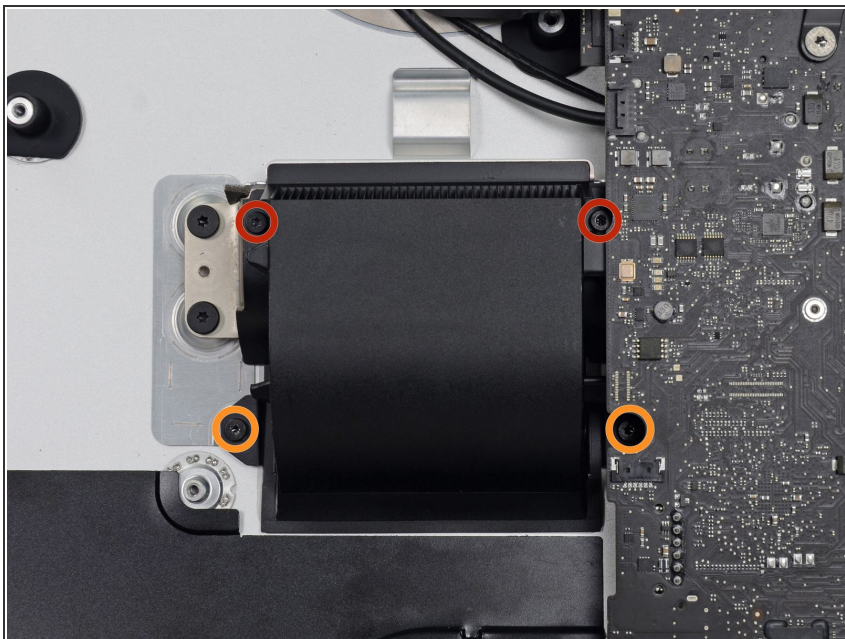
Step 6



- Use the flat edge of a spudger to pry the headphone jack cable connector from its socket on the logic board.

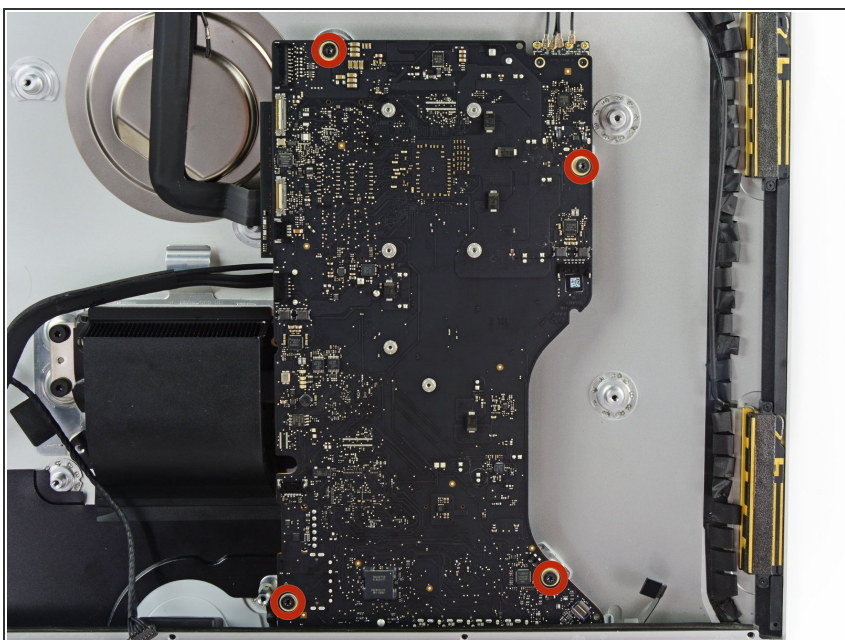
☞ Push the cable slightly to the right to clear it for the removal of the logic board.

Step 7



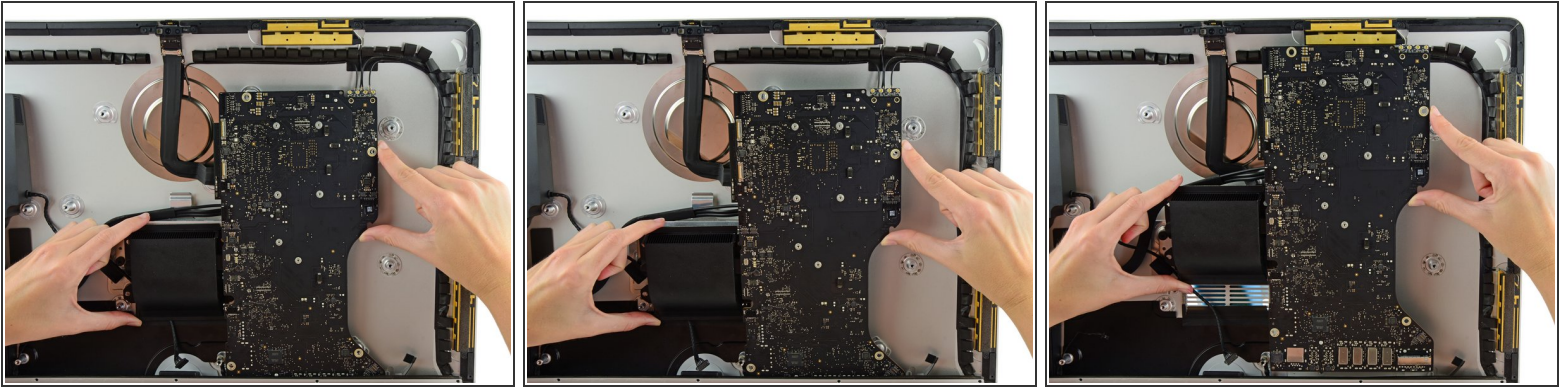
- Remove the following screws securing the exhaust duct to the rear enclosure:
 - Two 6.3 mm T8 screws
 - Two 4.7 mm T8 screws

Step 8



- Remove the four 7.2 mm T10 screws securing the logic board to the rear enclosure.

Step 9



- Tilt the top of the logic board away from the rear enclosure.
- Lift the logic board straight up and out of the iMac.

⚠ Be careful **not** to snag the board on any of the rear case's screw posts.

ⓘ The I/O boards at the bottom of the logic board will be the greatest challenge. It is recommended to pull gently to avoid any damage.

Step 10



- ✦ When installing the logic board, take care to align the exterior I/O ports correctly. The logic board can sit crooked even when secured with all its screws.
 - Use a USB flash drive and/or ethernet cable to ensure the logic board is seated correctly while you screw it in.

To reassemble your device, follow these instructions in reverse order.