



Toshiba Satellite C850 - WiFi / Bluetooth half mini PCI express card Replacement

Toshiba Satellite C850 - WiFi / Bluetooth half mini PCI express card Replacement

Written By: ZFix



INTRODUCTION

For many laptops the WiFi card is under the HDD cover and replacing is very easy operation.

To change the WiFi half mini PCIe card on this laptop, you must to disassemble the bottom case.

[Please SUBSCRIBE to my channel ツ](#)

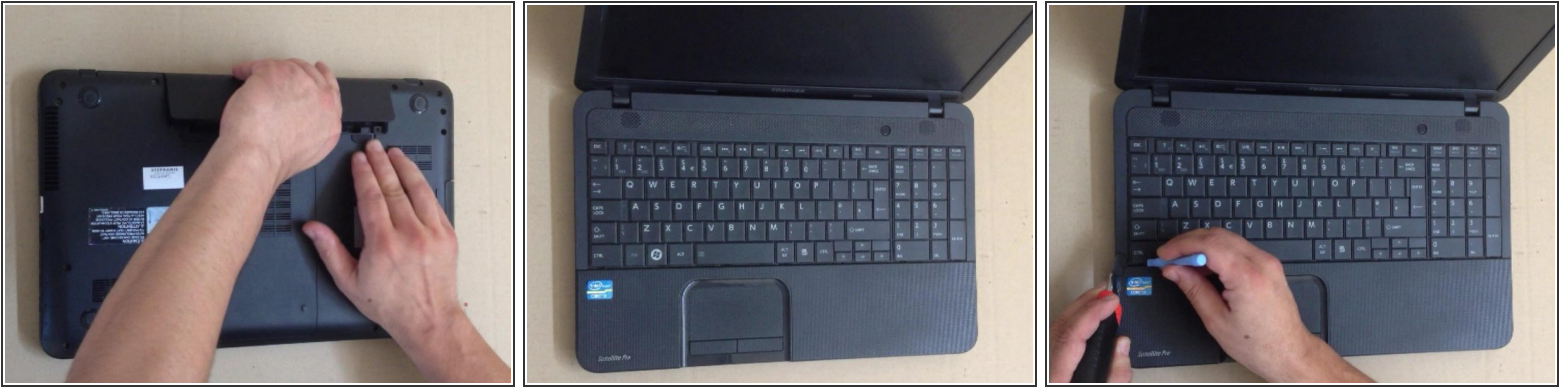
[video: <https://www.youtube.com/watch?v=7rPK6fAMM74>]



TOOLS:

- [Pro Tech Toolkit](#) (1)
-

Step 1 — WiFi / Bluetooth mini PCI express card



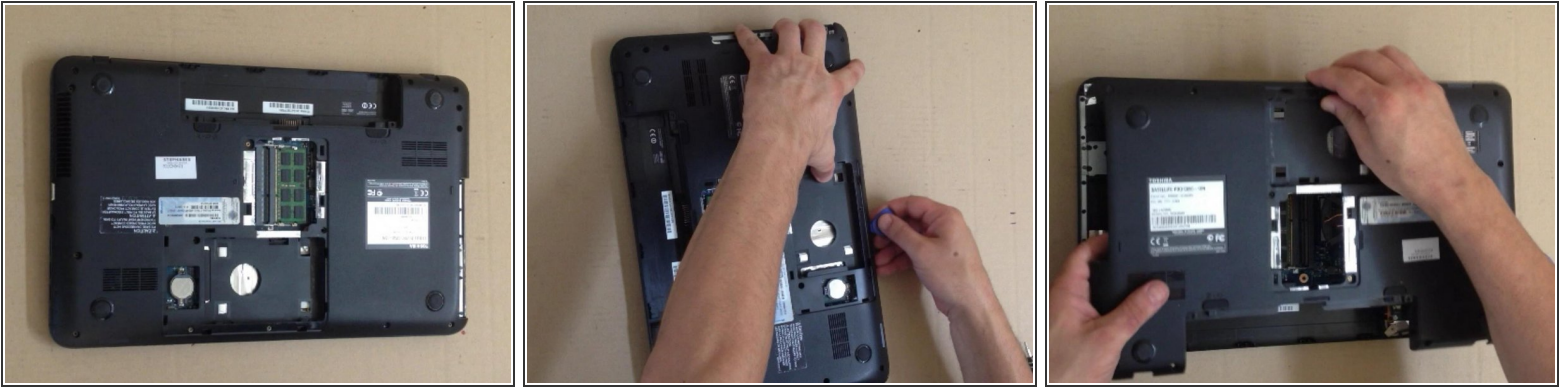
- Switch-off the laptop and remove the battery.
- Use cutter and plastic tool to remove the Keyboard, held by 7x locking clips.

Step 2



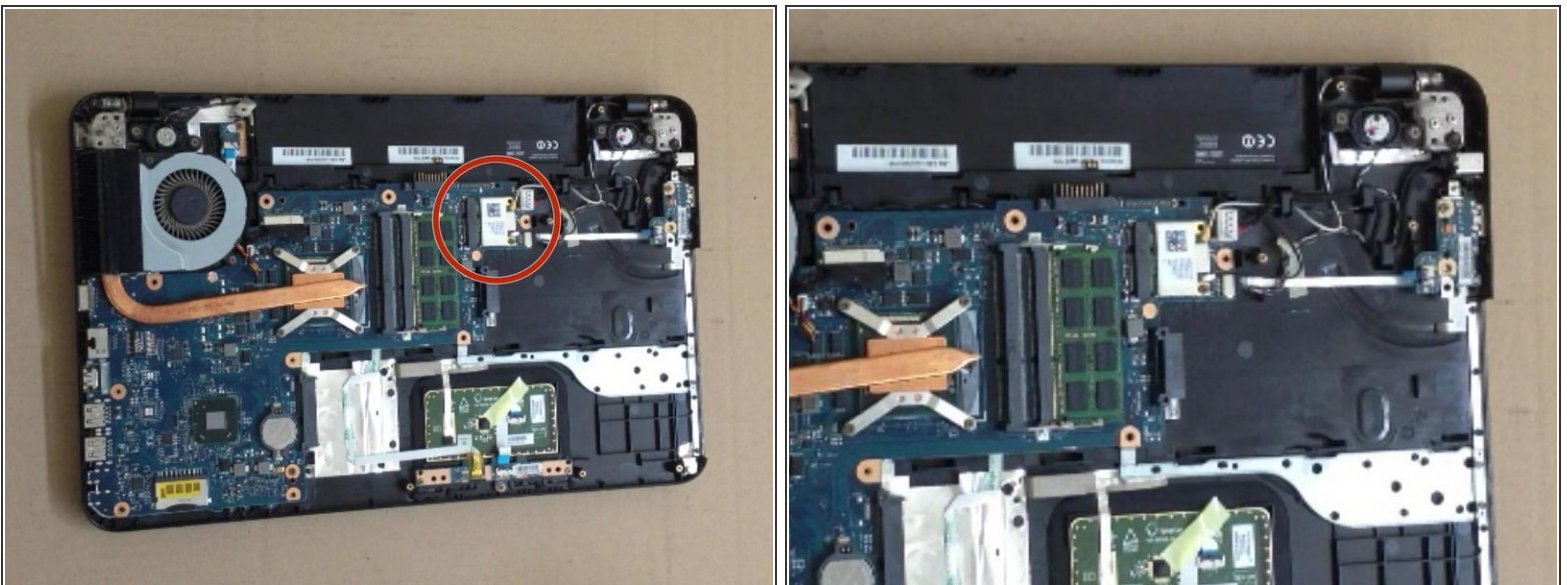
- Remove 7x screws from the upper case.
- Disassemble the HDD, RAM Memory cover and remove the HDD (just for safety).
- Then remove 12x screws so you can start with disassembling the bottom case.

Step 3



- Use a plastic tool for separating the bottom case from the laptop.

Step 4



- Here is the WiFi, Bluetooth half mini PCIe card.
- Disconnect 2x antenna cables (lueetooth and WiFi).
- The mini PCI card is held by one small screw.
- .
- **Did you do it successfully?**

To reassemble your device, follow these instructions in reverse order.