



Sony Ericsson Xperia Play LCD Display Replacement

Written By: ZFix



INTRODUCTION

If your LCD display is broken or not working in this manual we will guide you how to replace it.

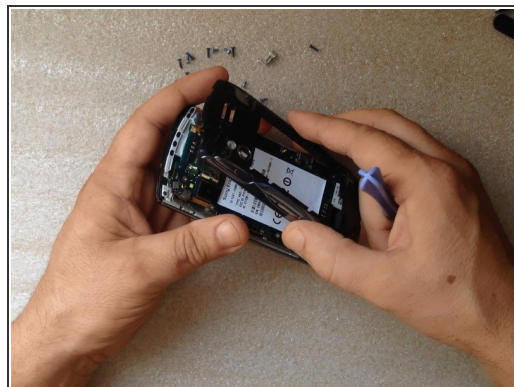
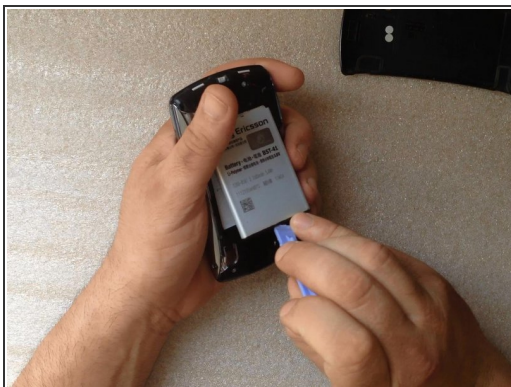
[Please SUBSCRIBE to my channel ツ](#)

[video: <http://youtu.be/UPH9u2nY6dA>]

TOOLS:

- [T5 Torx Screwdriver](#) (1)
 - [Phillips #00 Screwdriver](#) (1)
 - [iFixit Opening Tools](#) (1)
-

Step 1 — LCD Display



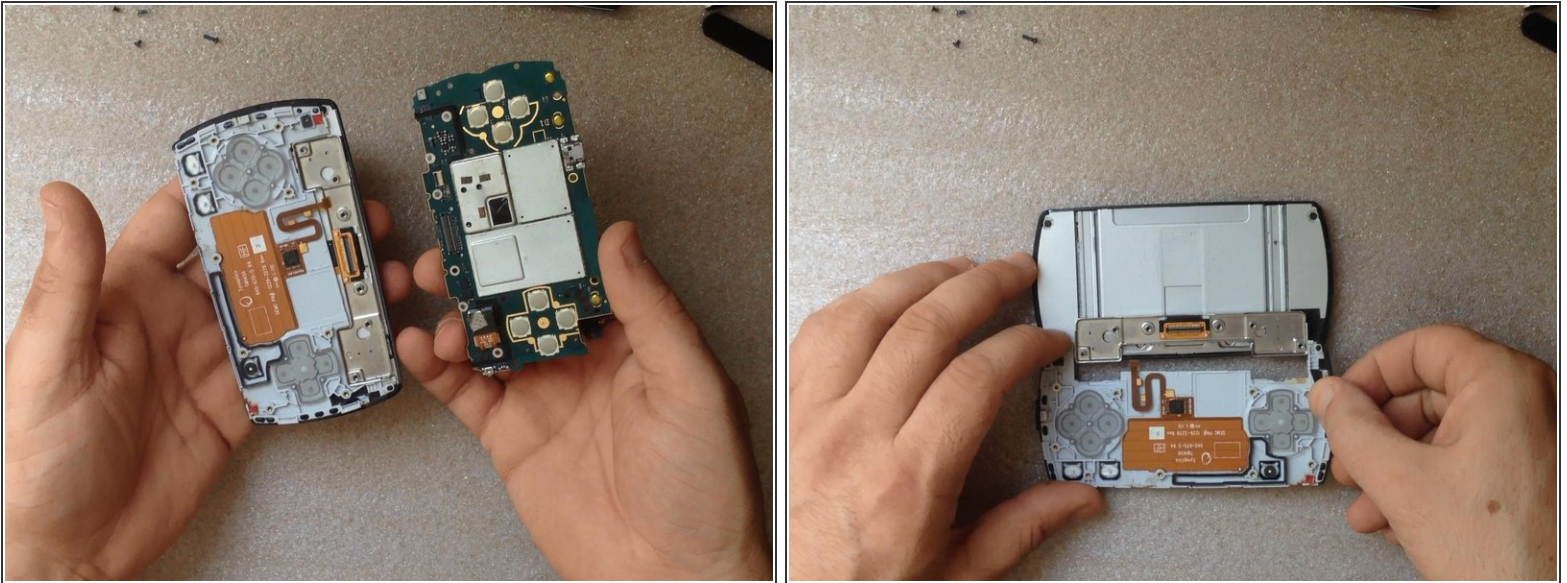
- Remove the battery cover and the battery.
- You have the 6x silver screws and 7x black screws and you can remove the rear bezel.

Step 2



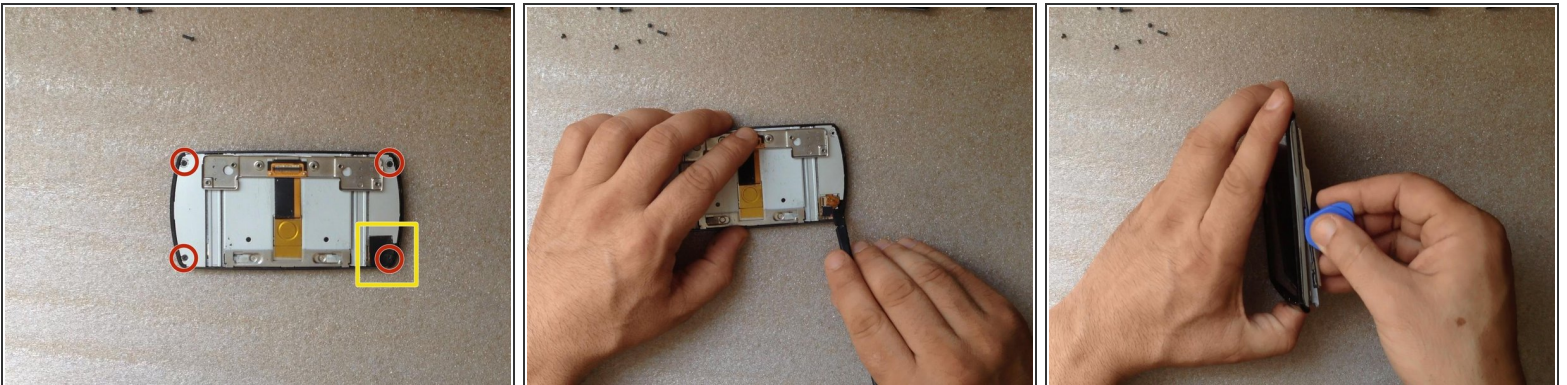
- By using a plastic tool, disconnect the main flex cable connector. Be careful, near to the connector there are many small elements.
- Disconnect the gaming keyboard flex cable.

Step 3



- Remove the motherboard and the gaming keyboard.

Step 4



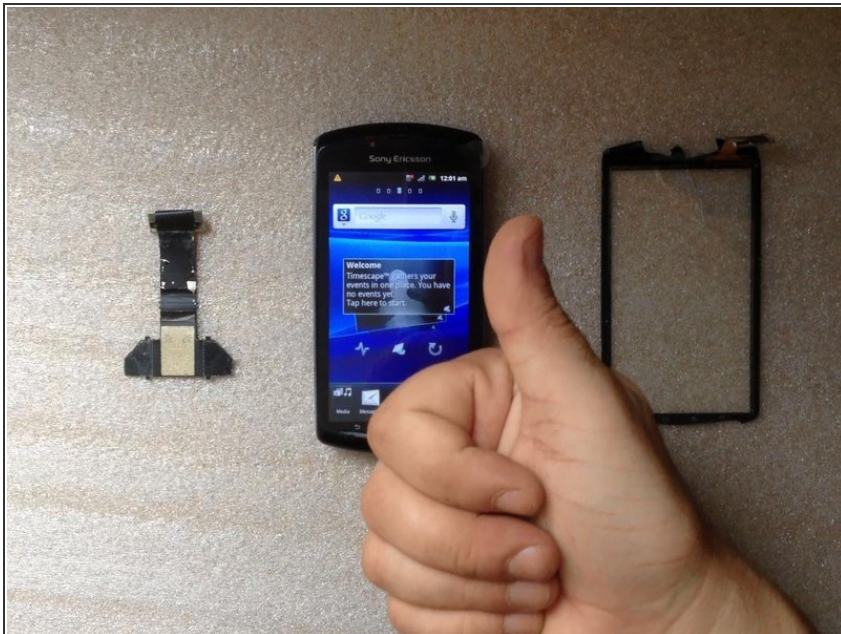
- Unscrew the 4x black screws.
- Remove the black sticker on the corner and disconnect the touchscreen flex cable.
- Disassemble front bezel.

Step 5



- Use the thin side of a plastic tool to separate the LCD display from the base bezel.
- Now you are ready to install the new spare part.
- I prefer to test the new spare part before the full assembly.

Step 6



- That's all.
- **Did you do it successfully?**
- .
- [Please SUBSCRIBE to my channel ツ](#)

To reassemble your device, follow these instructions in reverse order.