



# Toshiba Tecra M2 CPU Replacement

This guide will show how to get to the CPU and replace it.

Written By: Cindy Nguyen





## TOOLS:

- [Phillips #00 Screwdriver](#) (1)
- [Phillips #0 Screwdriver](#) (1)
- [64 Bit Driver Kit](#) (1)

## Step 1 — Battery



- Flip the laptop upside down so the back compartment is facing up.
- Place left thumb on the battery lock tab.
- Place right thumb on the battery release latch.

## Step 2



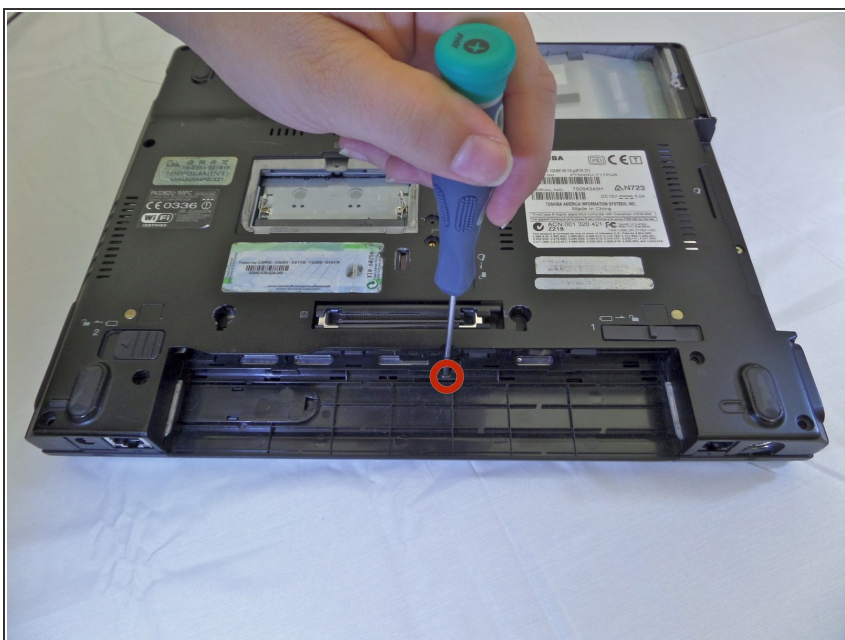
- Slide both tabs outward at the same time to release battery pack.

## Step 3



- Pull out the battery after it has popped out and set aside.
- ❗ The battery and the battery cover are in one piece

## Step 4 — CPU



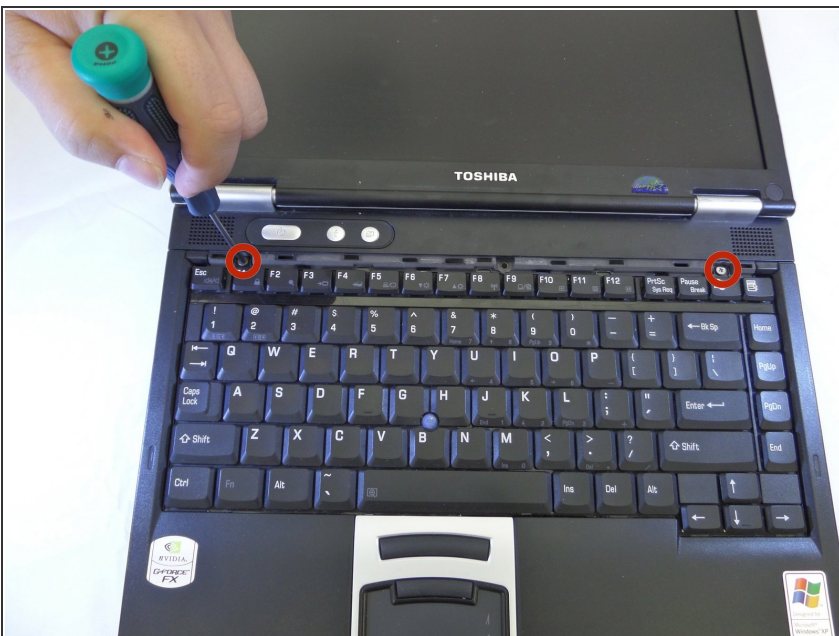
- Use a #00 phillips head screwdriver to remove the 8mm screw for the keyboard strip located under the battery.

## Step 5



- Turn the device over and open it up to the display.
- Gently lift a corner of the keyboard strip until it pops out of its position.

## Step 6



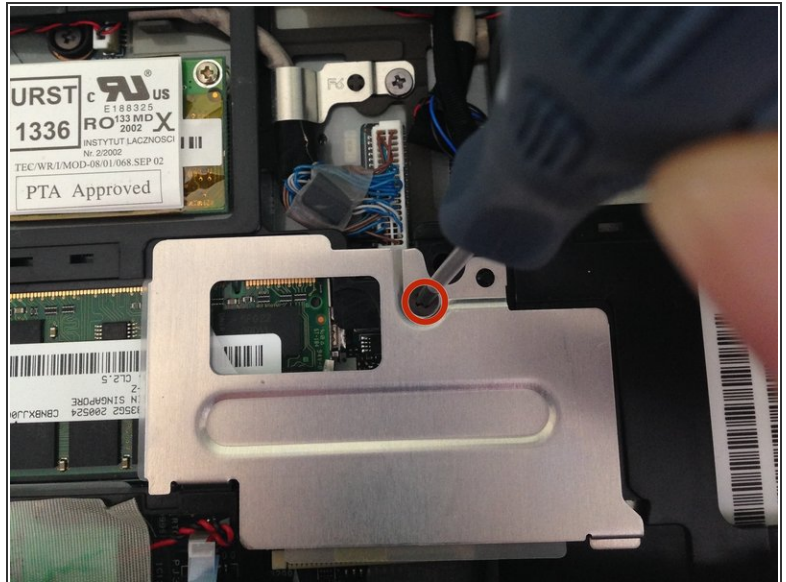
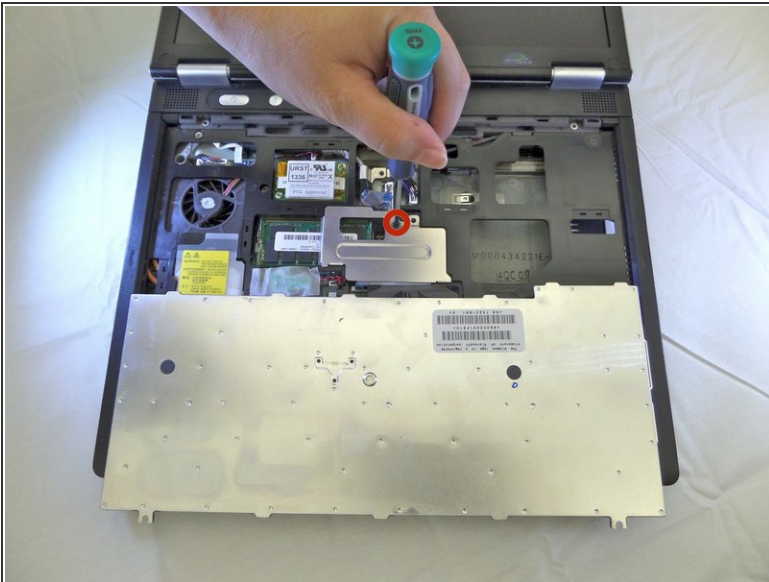
- Using a #00 phillips head screwdriver, remove the two 4mm screws found underneath the keyboard strip.

## Step 7



- Pop the keyboard up gently and rest on top of the touch pad
- ⓘ The keyboard is attached underneath by a thin film. Do not rip the keyboard off. Gently lay it down without ripping the film.

## Step 8



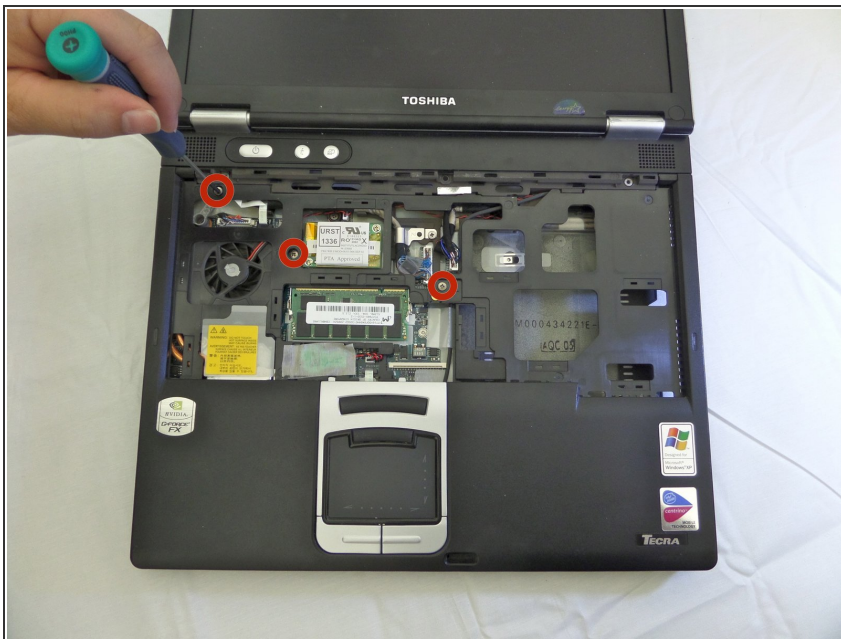
- Using a #00 phillips head screwdriver, remove the 6mm screw holding the metal plate down.

## Step 9



- Gently remove the keyboard connector film from the motherboard with fingers by lifting upwards.
- Set aside the keyboard.

## Step 10



- Using a #00 phillips head screwdriver, remove the three 13mm screws holding down the touch pad's frame from underneath the keyboard.

## Step 11



- Flip laptop back upside down.
- Remove the 5mm lock screw, using a #00 phillips head screwdriver.
- Slide bay latch toward the battery compartment.
- Remove CD-RW/DVD-ROM drive.

## Step 12



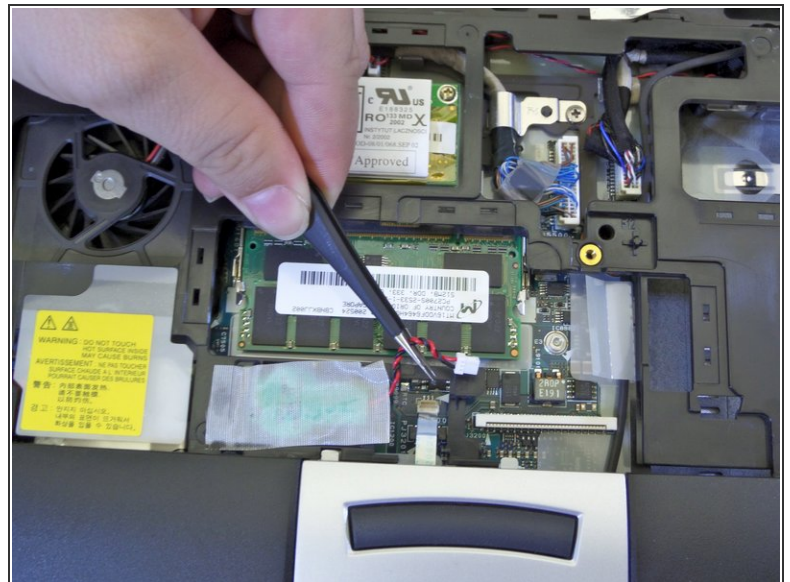
- Remove the 4.5mm screw located under the CD-RW/DVD-ROM drive compartment, using a #00 phillips head screwdriver.

## Step 13



- Remove the three 17mm screws found on the backside of the laptop using a #00 phillips head screwdriver.
- Remove the ten 8mm screws using a #00 phillips head screwdriver.

## Step 14



- Flip the laptop back over and unplug the touch pad's power cord from the motherboard gently using a pair of tweezers.

## Step 15



- Lift off the plastic cover and set it aside.

## Step 16



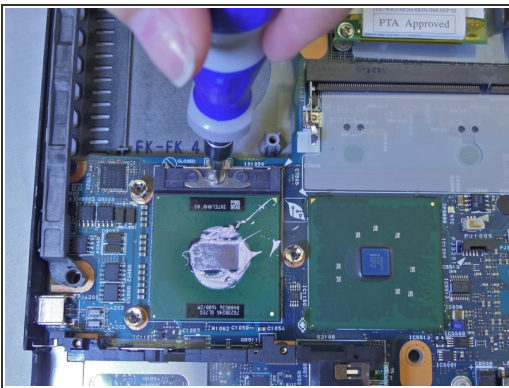
- Using a #00 Phillips head screwdriver, unscrew the three 5mm screws holding down the heat sink securing bracket.
- Lift off the securing bracket and set aside.

## Step 17



- Wiggle the heat sink until it lifts off the top of your CPU. There is thermal paste underneath and it may stick.

## Step 18



- Turn a flathead #3 screwdriver counter-clockwise to unlock the CPU socket.
- Grab the CPU with your index finger and thumb and pull directly upwards.
- Apply a new coat of thermal paste before reassembling.
  - [How to Apply Thermal Paste](#)

To reassemble your device, follow these instructions in reverse order.