



Palm Zire 21 Battery Replacement

How to replacement a battery in Palm Zire 21.

Written By: Jeremy Craft



INTRODUCTION

Use this guide to replace the battery on a Palm Zire 21.



TOOLS:

- [Pro Tech Toolkit](#) (1)
-

Step 1 — Battery



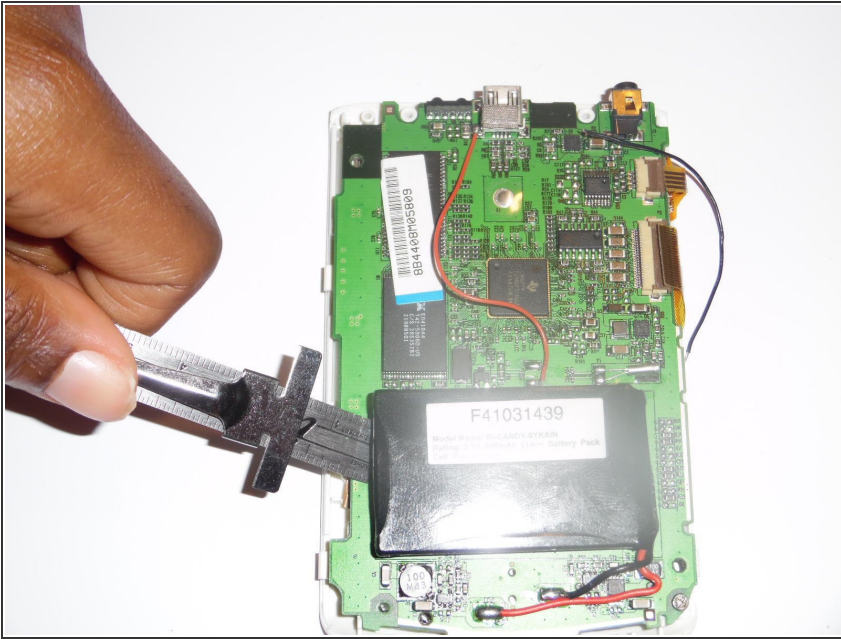
- Remove the two 0.8mm screws located on the back of the device.

Step 2



- Remove the back cover from the device exposing the battery.

Step 3



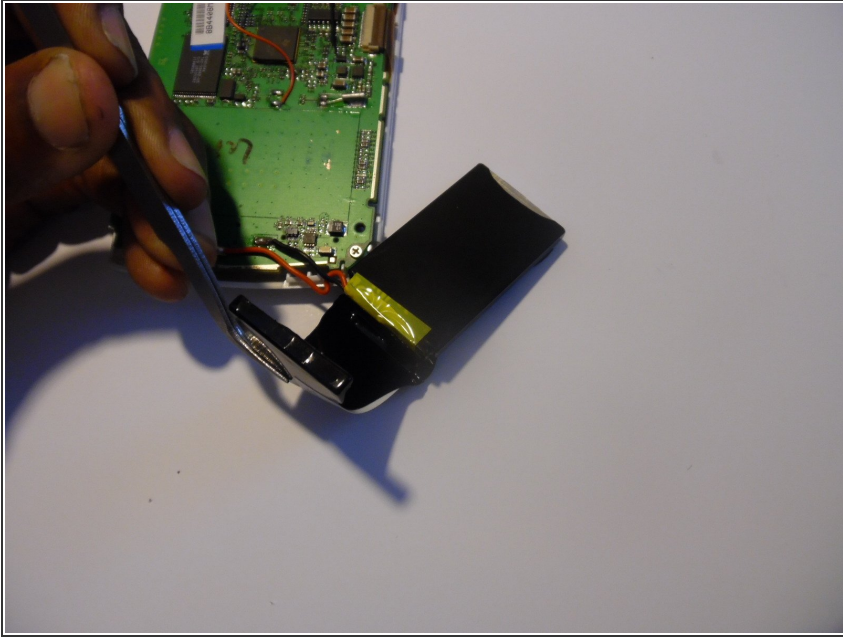
- Using a plastic opening tool, small flathead screwdriver, or small knife blade pry the battery away from the motherboard. Be careful not to pry too fast, or you could rip the wires off during this stage.

Step 4



- Carefully remove the battery from the motherboard.

Step 5



- Unwrap the old battery from electrical tape and replace with new battery.

To reassemble your device, follow these instructions in reverse order.