



# MacBook Pro 15" Unibody Mid 2010 Hard Drive Replacement

Replace your hard drive.

Written By: Walter Galan



# INTRODUCTION

Upgrade your hard drive for more storage space!



## TOOLS:

- [Phillips #00 Screwdriver](#) (1)
- [T6 Torx Screwdriver](#) (1)
- [Tri-point Y0 Screwdriver](#) (1)



## PARTS:

- [MacBook and MacBook Pro \(Non-Retina\) SSD Upgrade Bundle](#) (1)
- [Crucial MX500 250 GB SSD](#) (1)
- [Crucial MX500 500 GB SSD](#) (1)
- [Crucial MX500 1 TB SSD](#) (1)
- [1 TB SSD Hybrid 2.5" Hard Drive](#) (1)

### Upgrade Kit

*This kit contains the drive and all tools needed.*

- [500 GB SSD Hybrid 2.5" Hard Drive](#) (1)

### Upgrade Kit

*This kit contains the part and all tools needed.*

- [500 GB 5400 RPM 2.5" Hard Drive](#) (1)
- [1 TB 5400 RPM 2.5" Hard Drive](#) (1)
- [MacBook Pro 15" Unibody \(Mid 2009 to Mid 2012\) Hard Drive Bracket](#) (1)
- [SATA Universal Drive Adapter](#) (1)

## Step 1 — Lower Case



- Remove the following ten screws securing the lower case to the upper case:
  - Three 13.5 mm (14.1 mm) Phillips screws.
  - Seven 3 mm Phillips screws.

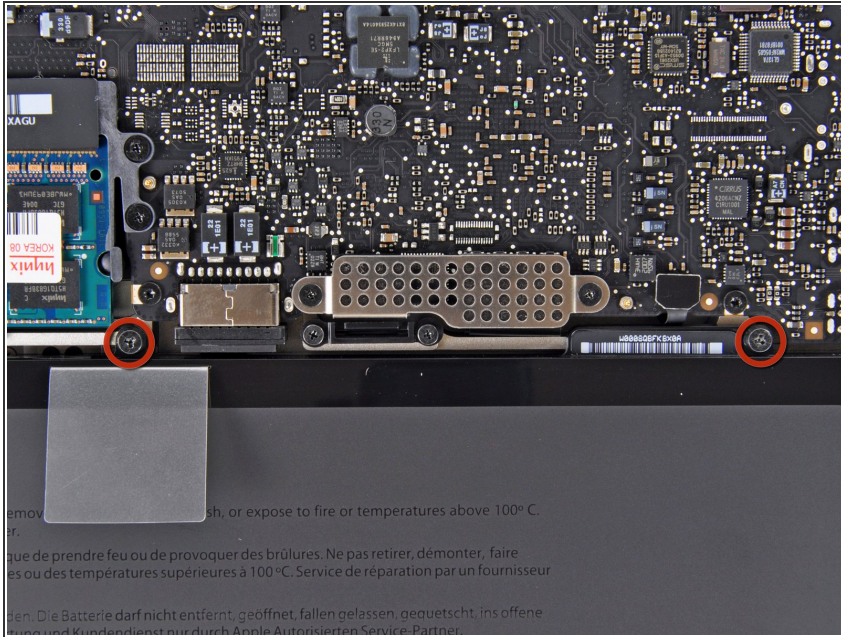
★ When removing these screws, note how they come out at a slight angle. They must be reinstalled the same way.

## Step 2



- Using both hands, lift the lower case near the vent to pop it off two clips securing it to the upper case.
- Remove the lower case and set it aside.

## Step 3 — Battery



- Remove the two 7.4 mm Tri-point screws securing the battery to the upper case.
  - Note: For certain repairs (e.g. hard drive), removing the battery is not necessary but it prevents any accidental shorting of electronics on the motherboard. If you do not remove the battery, please be careful as parts of the motherboard might be electrified.
- ⓘ You do not necessarily have to follow steps 3-6 to remove the battery in order to replace the hard drive. However it is recommended to remove all power sources from electronics before working on them.



## Step 4



- Use the tip of your finger to carefully peel back the corner of the warning label to reveal a hidden Tri-point screw.
- Remove the last 7.4 mm Tri-point screw securing the battery to the upper case.

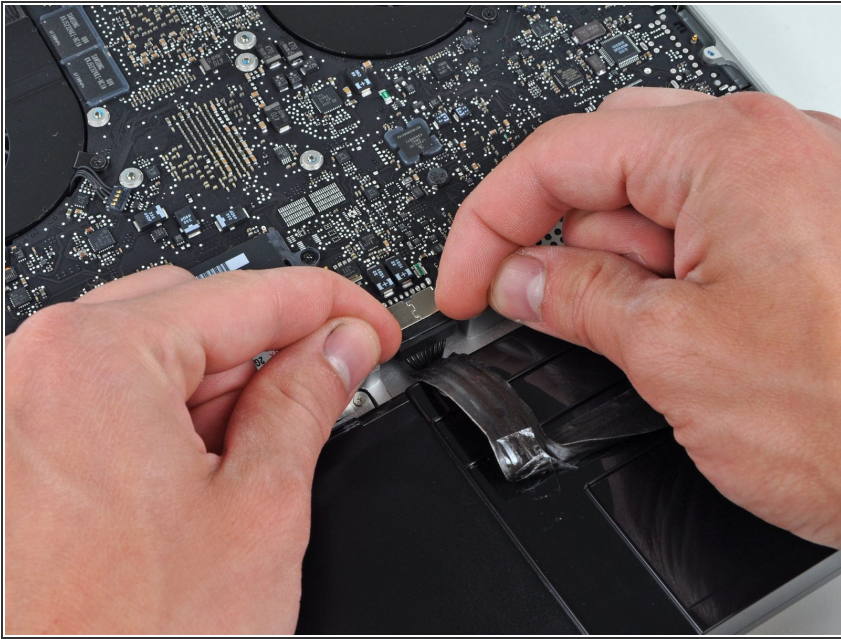
## Step 5



- Lift the battery by its plastic pull tab and slide it away from the long edge of the upper case.

**⚠ Do not try to completely remove the battery just yet.**

## Step 6



- Tilt the battery away from the logic board enough to access the battery cable connector.
- Pull the battery cable connector away from its socket on the logic board and remove the battery from the upper case.
- ⓘ Pull the battery cable connector away from the center of the logic board.
- ★ If you're installing a new battery, you should [calibrate](#) it after installation:
  - Charge it to 100%, and then keep charging it for at least 2 more hours. Next, unplug and use it normally to drain the battery. When you see the low battery warning, save your work, and keep your laptop on until it goes to sleep due to low battery. Wait at least 5 hours, then charge your laptop uninterrupted to 100%.
  - If you notice any unusual behavior or problems after installing your new battery, you may need to [reset your MacBook's SMC](#).



## Step 7 — Hard Drive



- Remove two Phillips screws securing the hard drive bracket to the upper case.
- ⓘ These screws are captive to the hard drive bracket.

## Step 8



- Lift the the retaining bracket out of the upper case.

## Step 9



- Lift the hard drive by its pull tab and pull it out of the chassis, minding the cable attaching it to the computer.

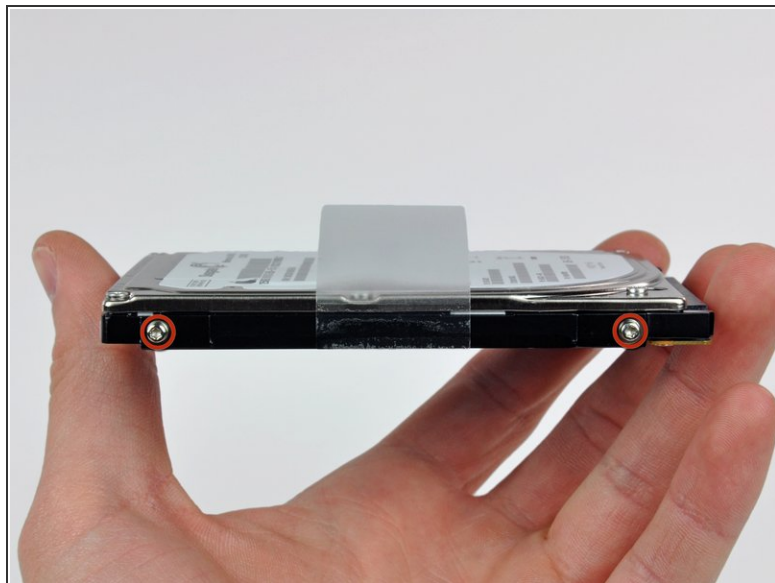
## Step 10



- Remove the hard drive cable by pulling its connector straight away from the hard drive.



## Step 11 — Hard Drive



- Remove two T6 Torx screws from each side of the hard drive (four screws total).
- ☑ You'll need to transfer these screws to your new hard drive if you're changing drives.
- If desired, peel the pull tab off your old hard drive and transfer it to the side of your new drive.
- ⓘ If you are installing a new hard drive, we have an [OS X install guide](#) to get you up and running. Many recent Macs may be able to use [OS X Internet Recovery](#).

To reassemble your device, follow these instructions in reverse order.