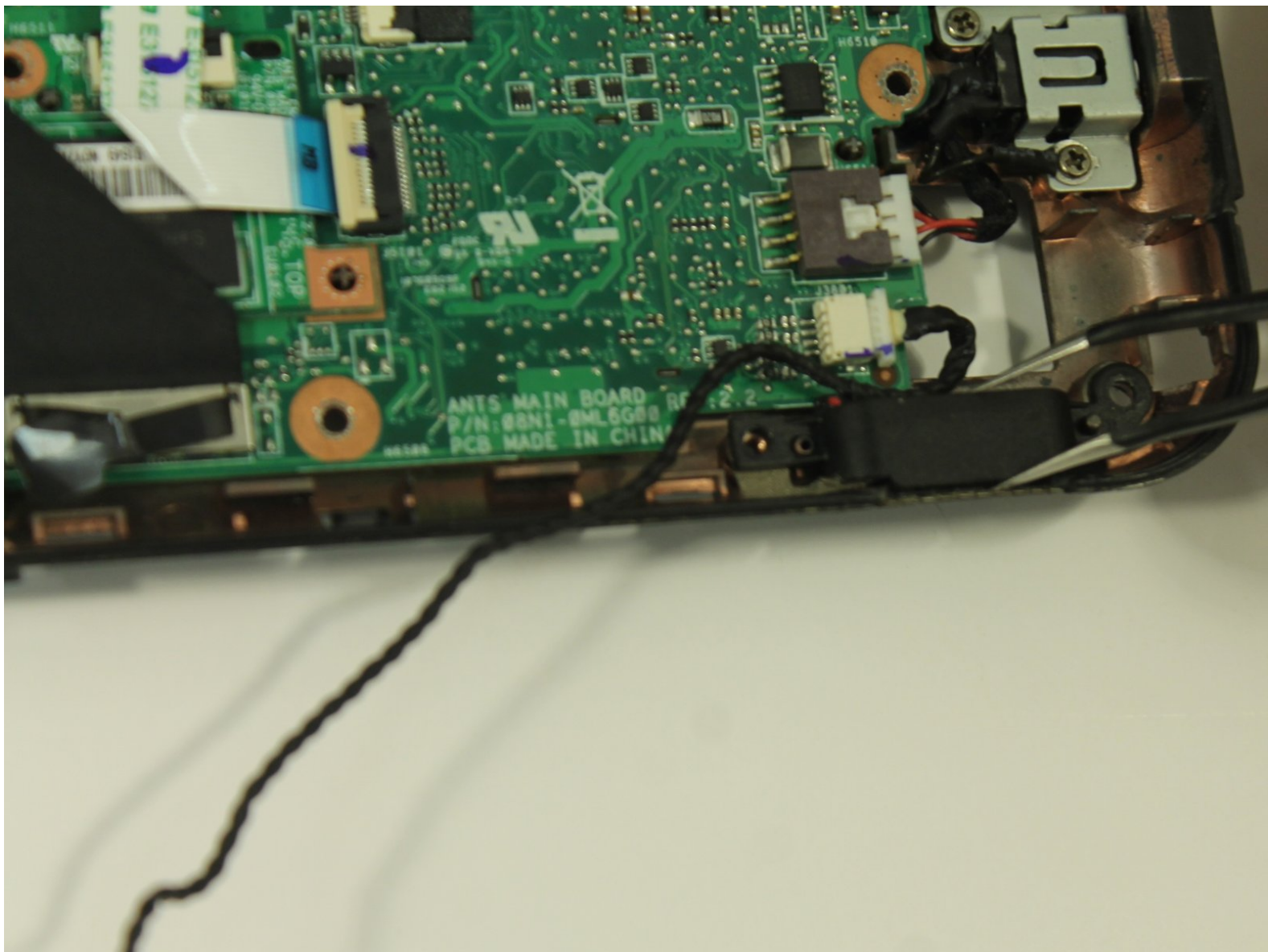




# Toshiba Thrive Speakers Replacement

If you don't hear any sound coming from your Thrive, or the sound is distorted, it's possible that the speakers need to be replaced.

Written By: Ivan Williams



---

# INTRODUCTION

This guide will show you how to replace the speakers in your Toshiba Thrive.

---



## TOOLS:

- [Phillips #1 Screwdriver](#) (1)
  - [Tweezers](#) (1)
  - [iFixit Opening Tools](#) (1)
  - [Spudger](#) (1)
-

## Step 1 — Back Cover



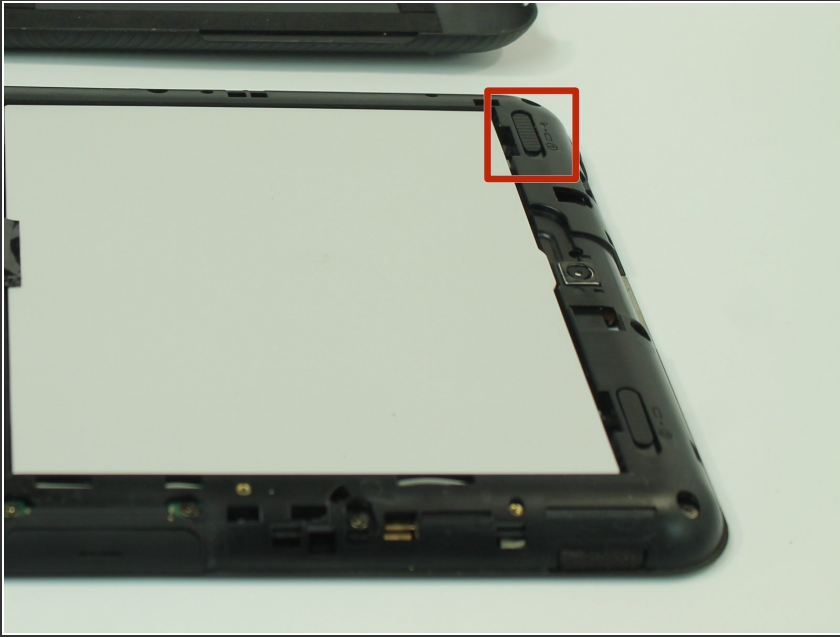
- Make sure the lock switch for the back cover is unlocked.
- The cover is unlocked when the switch is slid in the direction of the 'unlock' icon.

## Step 2



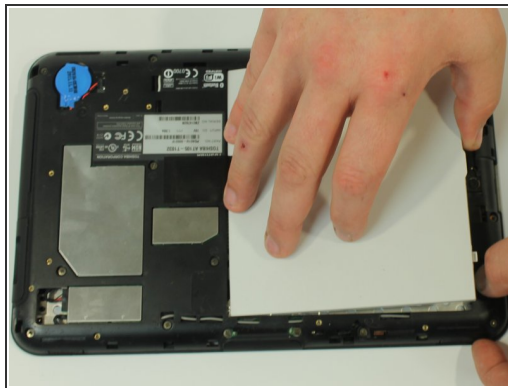
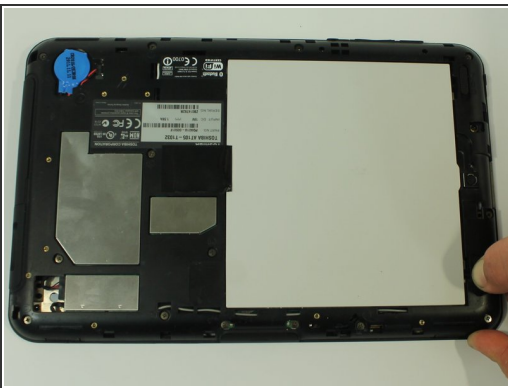
- Remove back cover by prying away from the Thrive.
- The easiest place to pry from is one of the two speakers.

## Step 3



- To remove the battery, make sure the lock switch is in the unlocked position.
- The battery is unlocked when the switch is slid to the unlocked position.

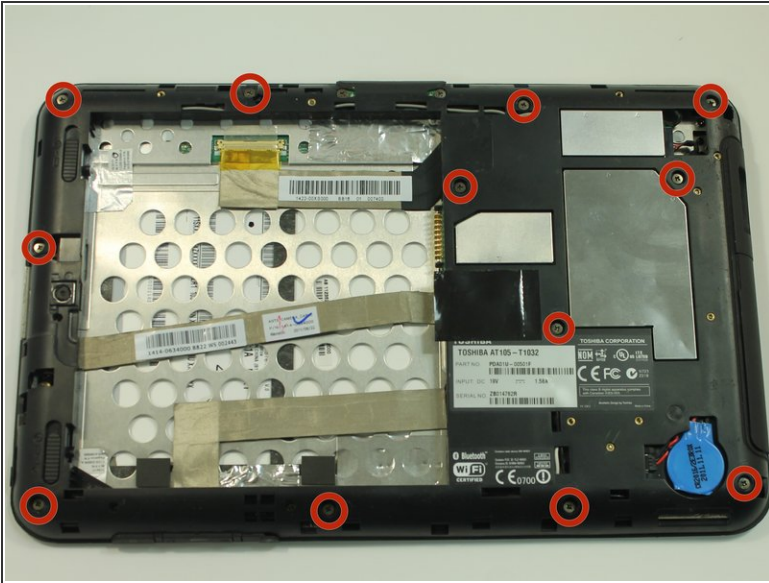
## Step 4



- Slide the battery switch release to the right.
- While holding the switch in place, lift up the battery.

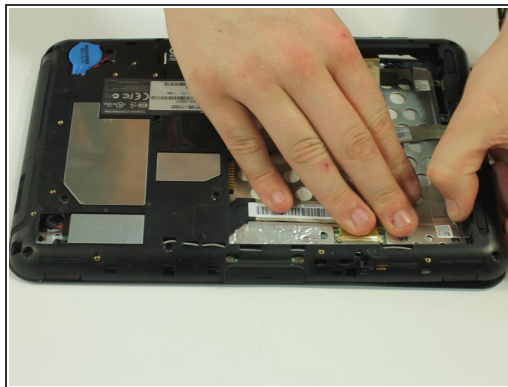
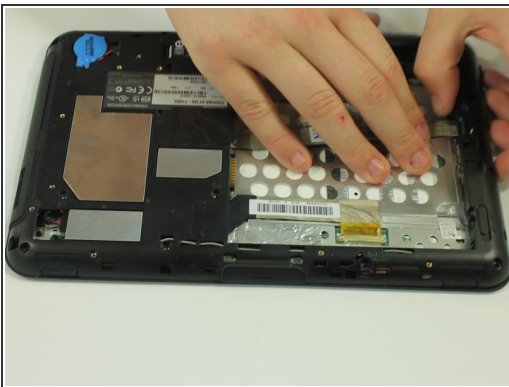


## Step 5 — Speakers



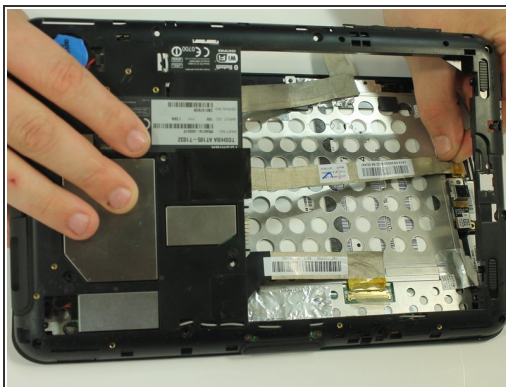
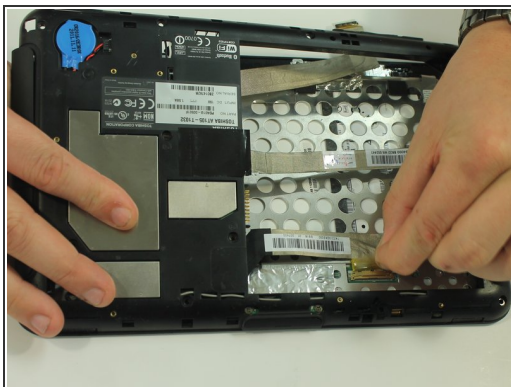
- Start by using a PH0 phillips head screwdriver to remove the 12 screws holding on the back cover
  - All of these screws are identical so don't worry about getting them mixed up.

## Step 6



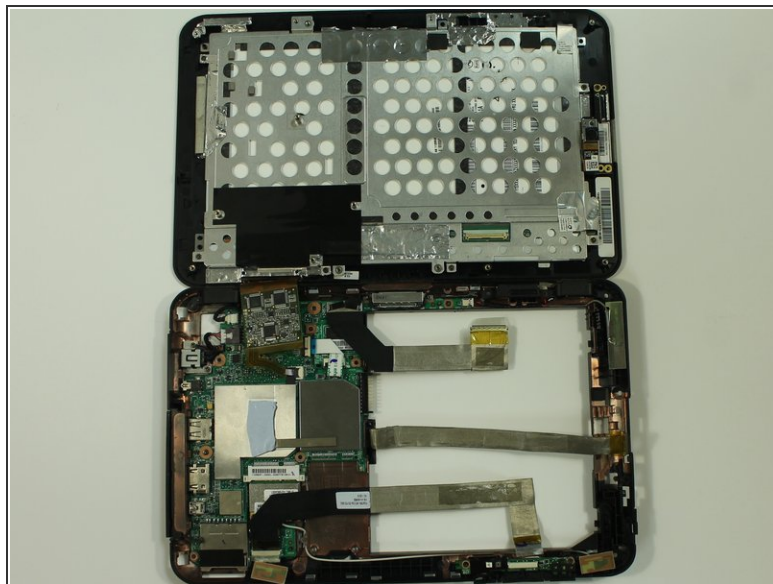
- Start to gently pry the back of the device off, while leaving it loosely in place.
  - Be careful not to tear or damage the cables when removing the back.

## Step 7



- Once the back of the case is off, disconnect the wires by gently pulling on the plastic tabs as shown.

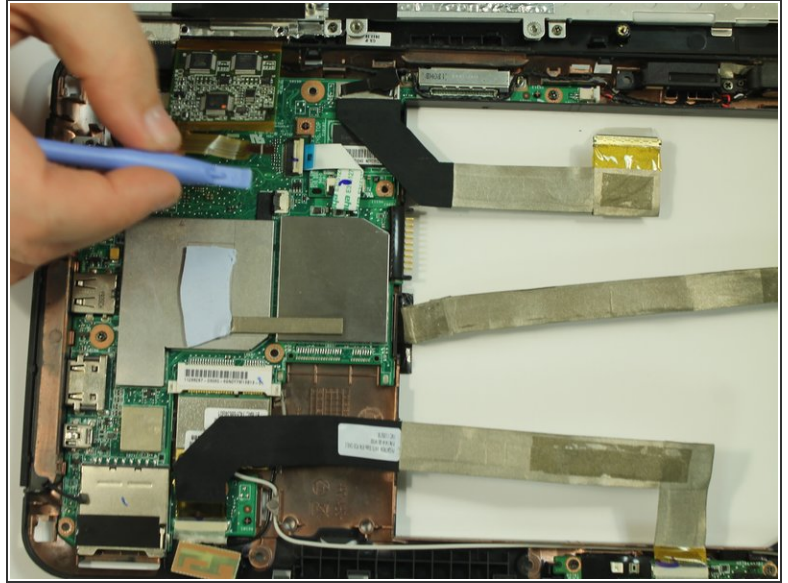
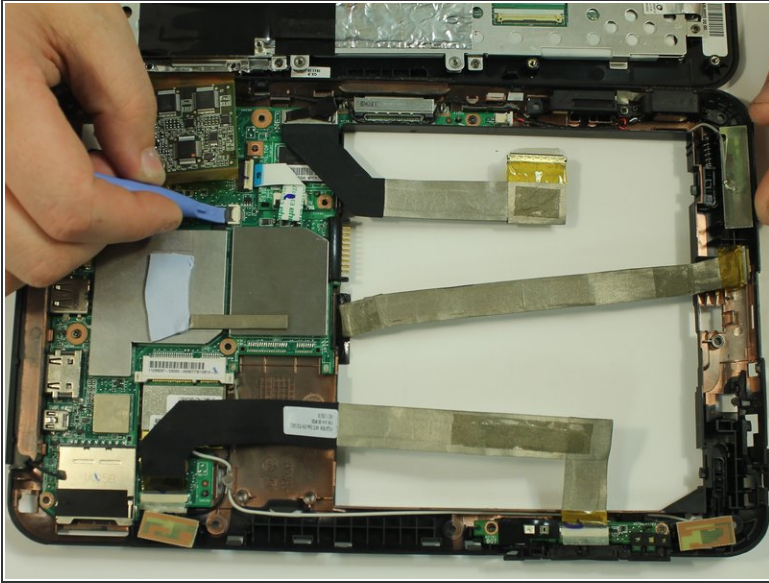
## Step 8



- carefully open the device like a book and lay the two halves beside each other.
- put the screen assembly in a safe place as you complete the rest of the guide.

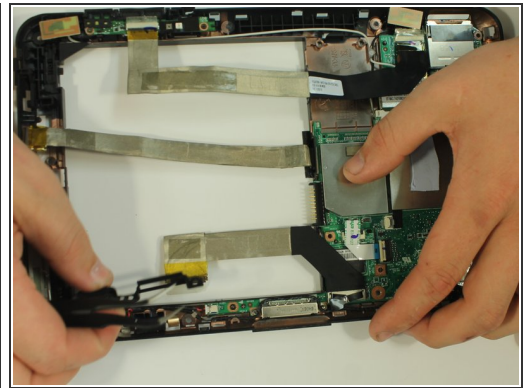
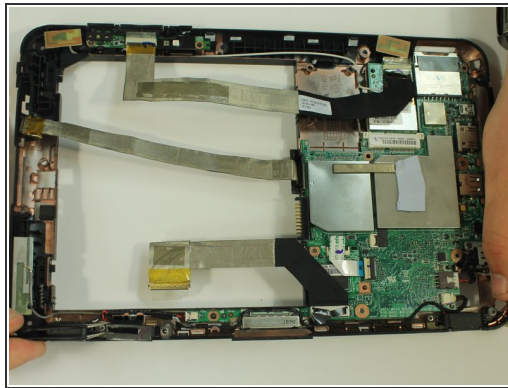
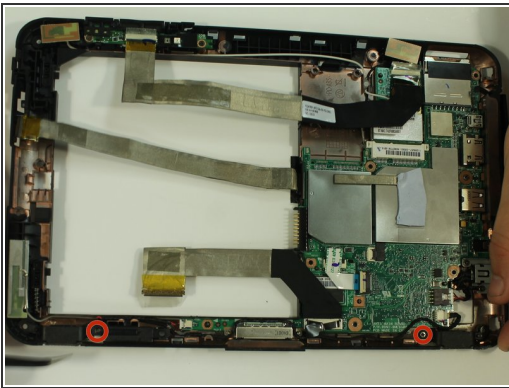


## Step 9



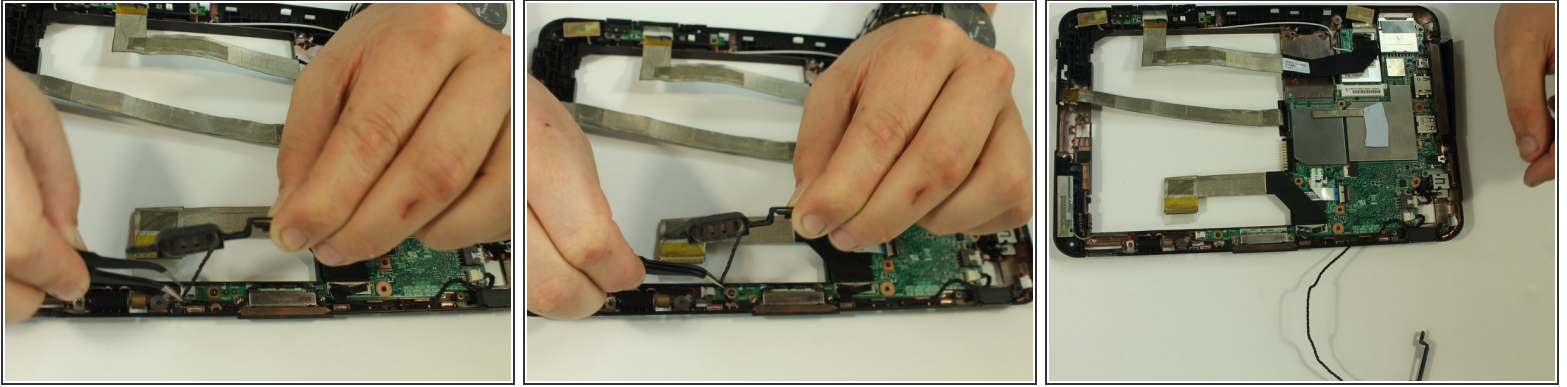
- Use the plastic opening tool to open the latch holding the last wire to the back of the device.

## Step 10



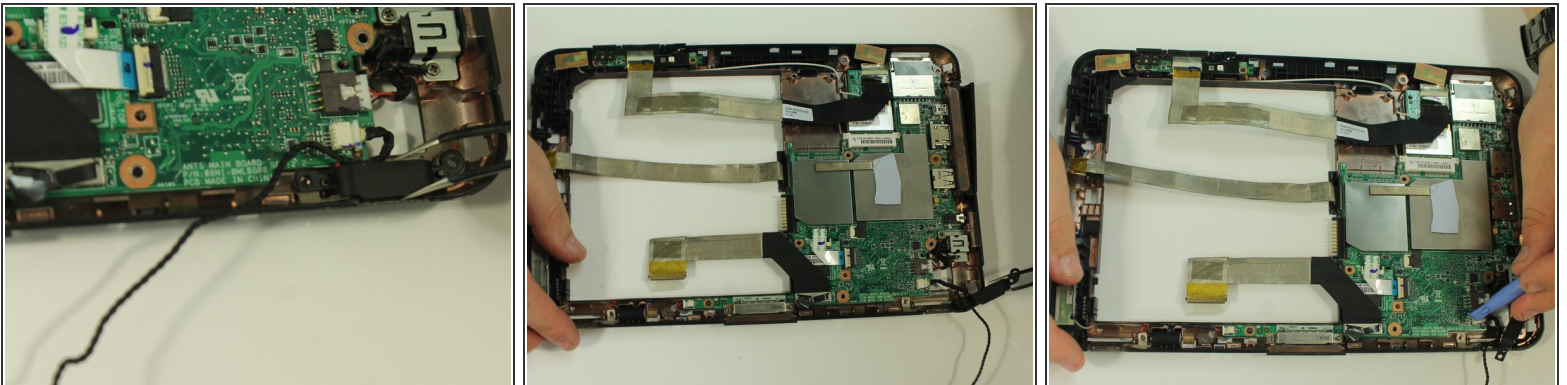
- Remove the two screws holding the speakers in place. The screws are 3mm in length and require a PH0 screwdriver.
- Using a pair of tweezers, remove the speaker.

## Step 11



- Use the tweezers to help you remove the speaker wire from the clips holding them in place.
- After removal place the left speaker on the side.

## Step 12



- Use the tweezers again to help you remove the right speaker from its position.
- Use a plastic opening tool to pull the connector connecting the speaker to the motherboard out of its port.

To reassemble your device, follow these instructions in reverse order.