



IBM ThinkPad T42 Display Replacement

Removal/repair of the display

Written By: Austin Kidd



INTRODUCTION

Removal/repair of the display

TOOLS:

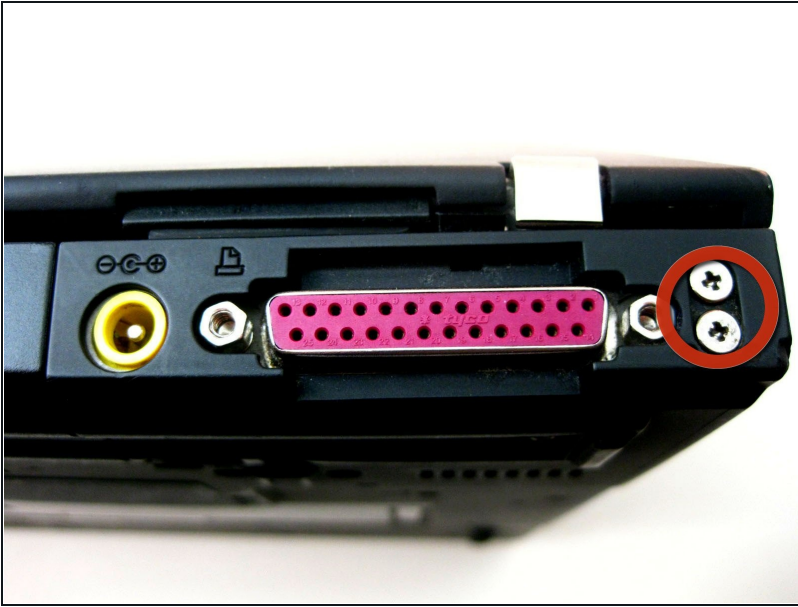
Phillips #0 Screwdriver (1)

Step 1 — Bottom cover



- Using a Phillips #0 screwdriver, identify and unscrew the twenty screws located on the underside of the T42.

Step 2 — Rear screws



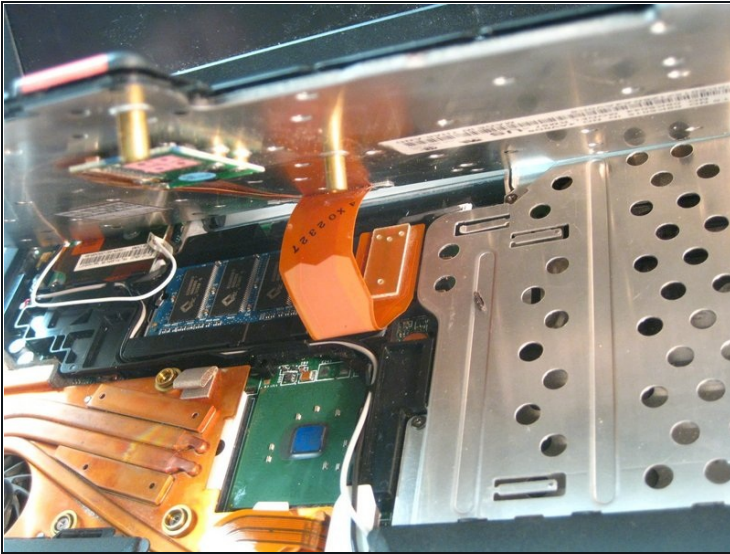
- Unscrew the four Phillips screws located on either side of the rear of the T42 (there are two located on each end.)

Step 3 — Keyboard and Trackpad



- Flip the laptop over and open the screen to access the keyboard and trackpad.
 - ① The keyboard and trackpad are connected to the motherboard. Before removing the keyboard and trackpad, disconnect both components from the motherboard, as shown in the following step.
- ⚠ The bezel and keyboard will be loose, be careful.

Step 4



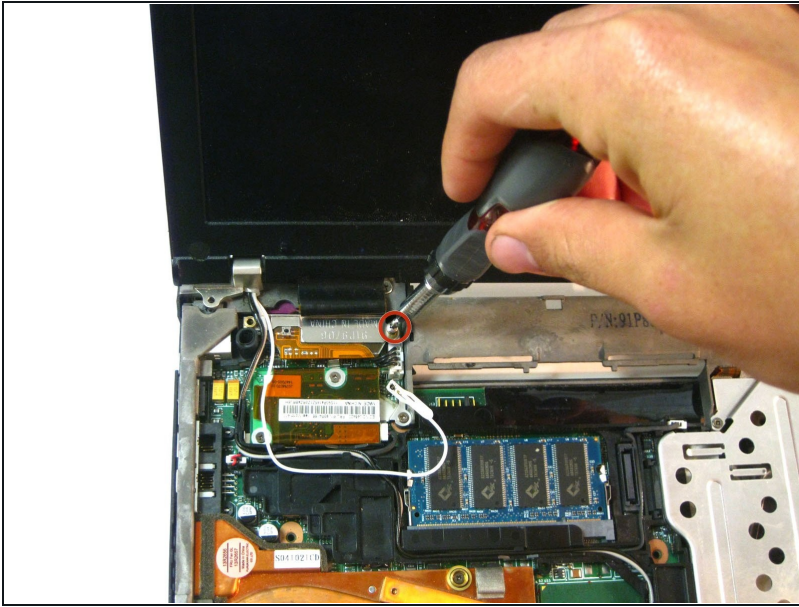
- Carefully maneuver the palm rest away from the keyboard, as both the keyboard and palm rest/trackpad will come off together.
- ⚠ Remember, both the keyboard and trackpad have connectors to the motherboard. Disconnect these before completely removing either component.

Step 5 — Bezel Removal



- Remove the plastic bezel along the edges, you may need to pry the areas circled with a spudger to remove the bezel.

Step 6 — Display Screws



- Unscrew the screws holding down the display.
- ① Along with the one pictured in red, there is another one along the top right edge.

Step 7 — Display and Ribbon Cable Removal



- Carefully unplug the display ribbon on the motherboard, then carefully lift the display free from the device.

To reassemble your device, follow these instructions in reverse order.