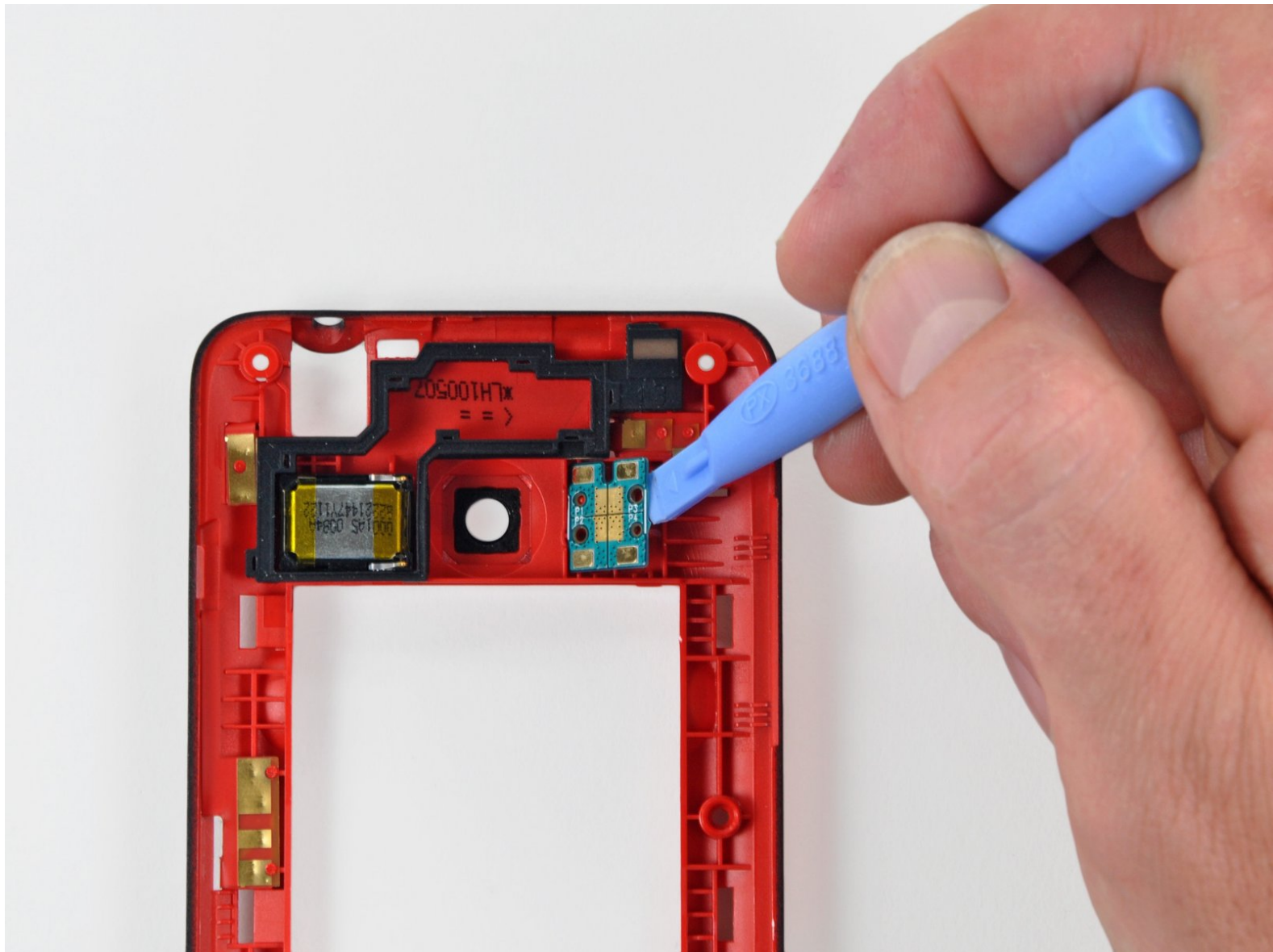




HTC Evo 4G Dual LED Flash Replacement

Dual LED Flash replacement.

Written By: Walter Galan



INTRODUCTION

Use this guide to replace a defective dual LED flash assembly.



TOOLS:

- [Phillips #00 Screwdriver](#) (1)
 - [Spudger](#) (1)
 - [T5 Torx Screwdriver](#) (1)
 - [Tweezers](#) (1)
 - [iFixit Opening Tools](#) (1)
-

Step 1 — Rear Panel



- Gently insert an iPod opening tool between the rear panel and the inner rear frame near the headphone jack.
- Use your iPod opening tool to pry up the rear case around the perimeter of the Evo.

Step 2



- Lift the rear panel off of the inner rear frame.

Step 3 — Battery



- Using the tip of your finger, lift the battery from the end closest to the camera.
- Remove the battery from the rear inner frame.

Step 4 — MicroSD card



- Use the flat end of a spudger to pry up the red MicroSD retainer attached to the inner frame.
- ⚠ The retainer will move about 1 mm and stop. Do not attempt to completely remove the MicroSD card retainer.

Step 5



- Use a pair of tweezers to carefully pull the MicroSD card out of its slot in the inner rear frame.

Step 6 — Rear Inner Frame



- Remove six T5 Torx screws securing the rear inner frame to the inner case.

Step 7



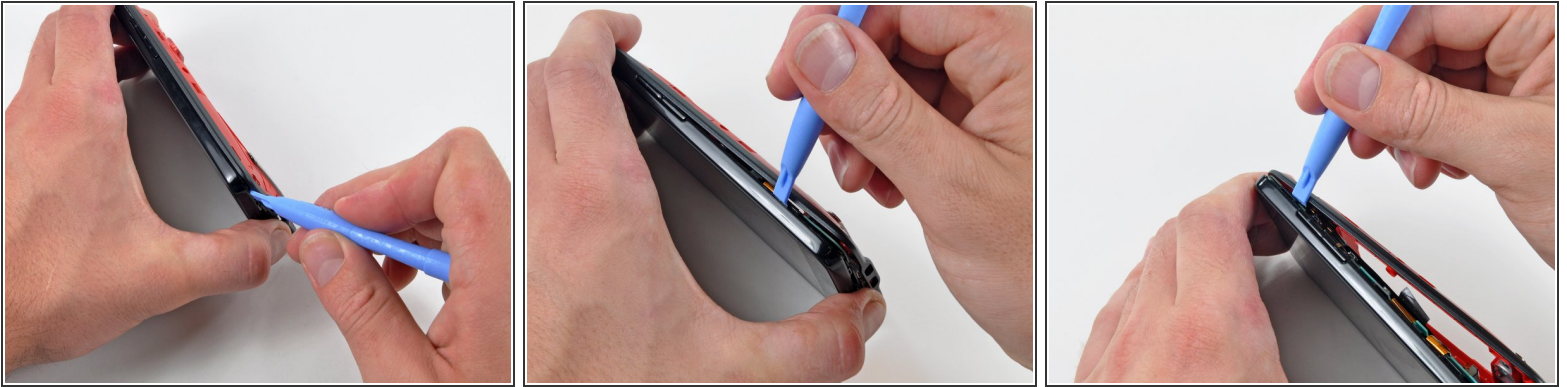
- Gently insert an iPod opening tool between the rear inner frame and its plastic surround near the Micro HDMI port.
- Carefully pry the top edge of the rear inner frame away from the front surround of the Evo.

Step 8



- Insert the iPod opening tool between the rear inner frame and its plastic surround and pry up at several points along the left edge of the Evo.

Step 9



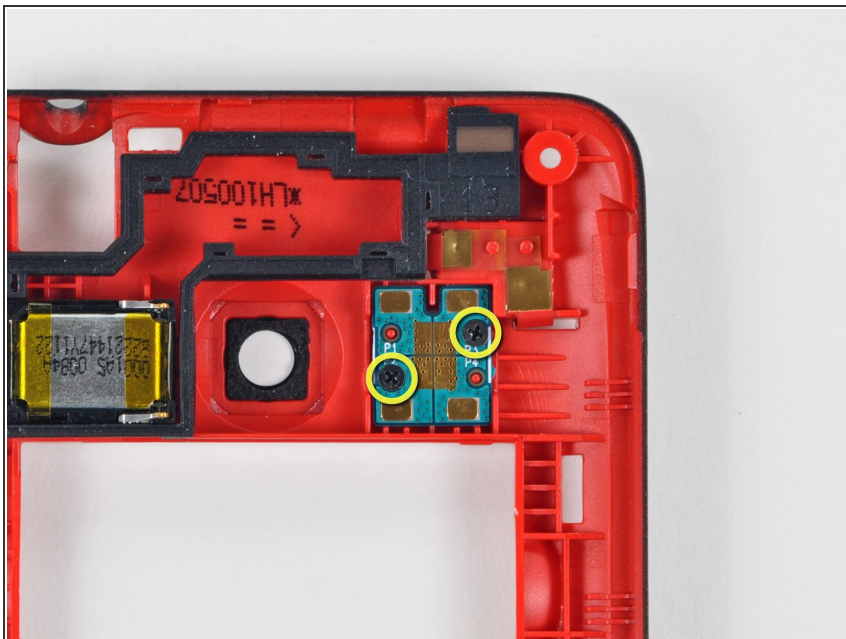
- Continue the prying procedure, now focusing on detaching the plastic surround from the bottom of the Evo.
- Pry up the rear inner frame along the right edge using the method described in previous steps.
- Eventually work around the entire perimeter of the rear inner frame until it is lifted slightly from the inner case.

Step 10



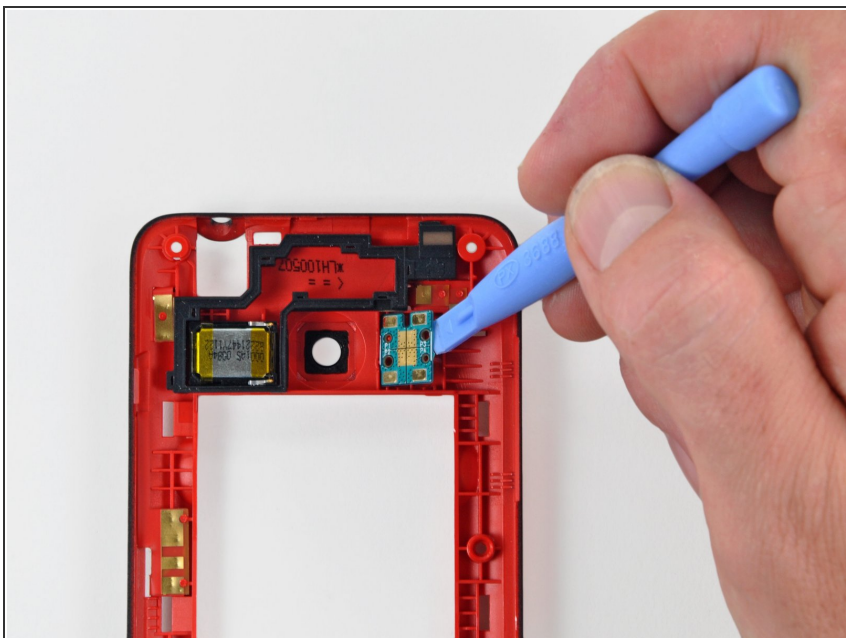
- Remove the rear inner frame from the rest of the Evo.

Step 11 — Dual LED Flash



- Remove the two Phillips screws securing the dual LED flash assembly to the rear inner frame.

Step 12



- Use an iPod opening tool to pry the dual LED flash assembly off the posts securing it to the rear inner frame.
- Remove the dual LED flash unit from the rear inner frame.

To reassemble your device, follow these instructions in reverse order.