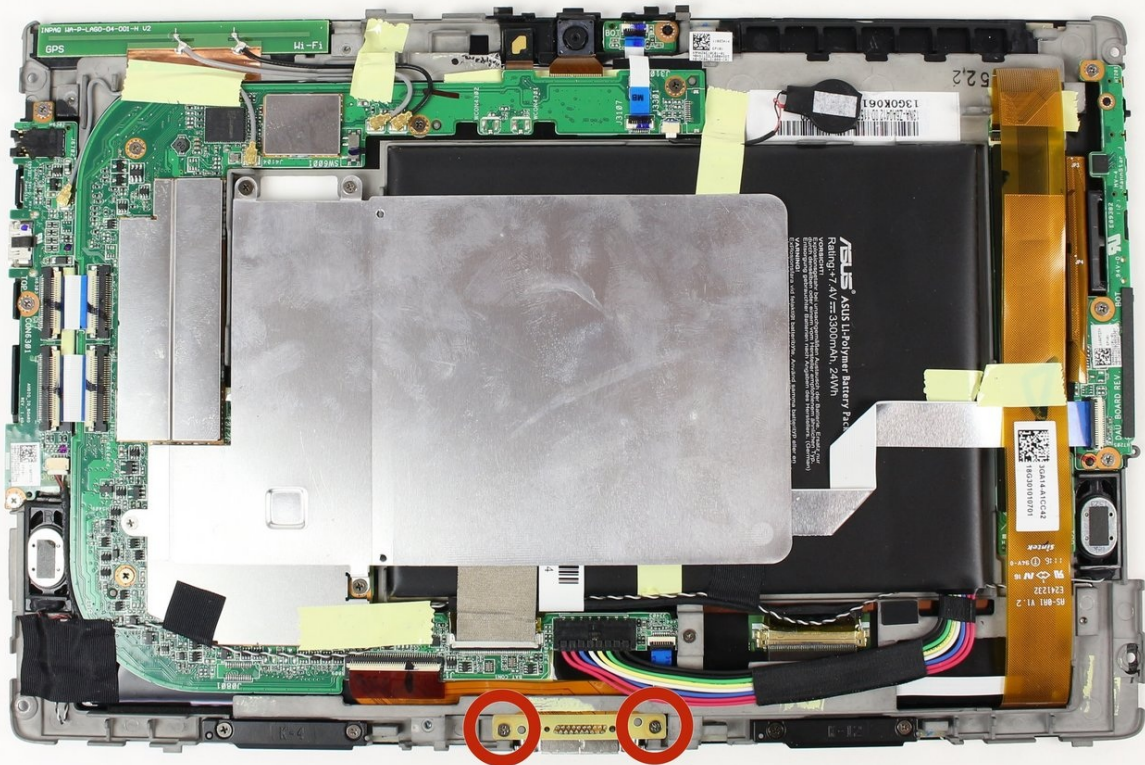




# ASUS Eee Pad Transformer Charging Port Replacement

The charging port is an essential part to all...

Written By: Sandy Babich



# INTRODUCTION

The charging port is an essential part to all electronics, this is where the device gets its life juices time and time again! A defective port can lead to poor charges or a lack of any charge at all. Ports can be damaged in any number of ways and the replacement is a very straightforward procedure to solve the issue.

---

## TOOLS:

[Phillips #00 Screwdriver](#) (1)  
[iFixit Opening Tool](#) (1)  
[T5 Torx Screwdriver](#) (1)

## PARTS:

[ASUS Eee Pad Transformer \(TF101\)](#)  
[Charging Assembly](#) (1)

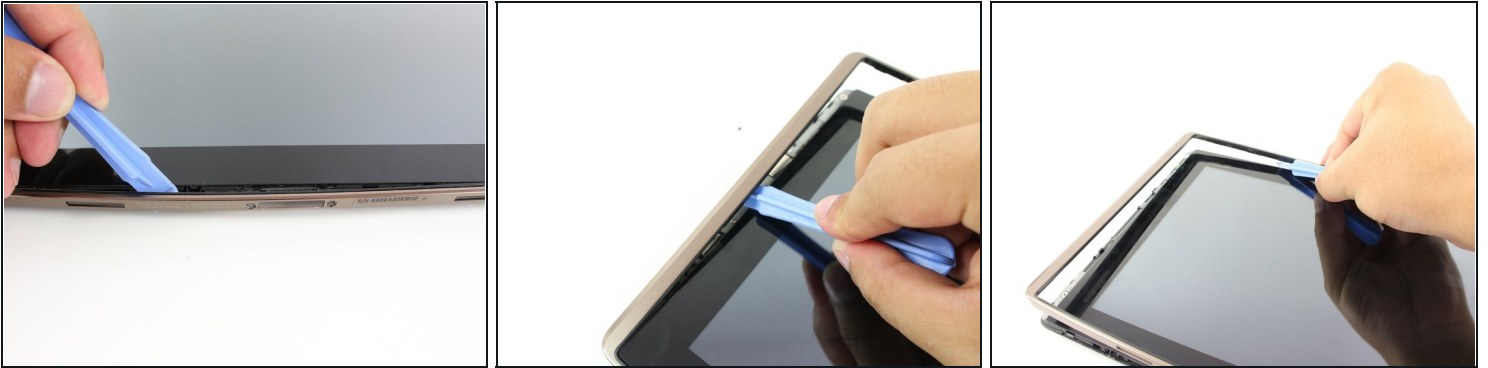
---

## Step 1 — Back Panel



- Use T5 Torx Screwdriver to remove two 4.5 millimeter T5 screws on either side of the port on the bottom of the tablet.

## Step 2



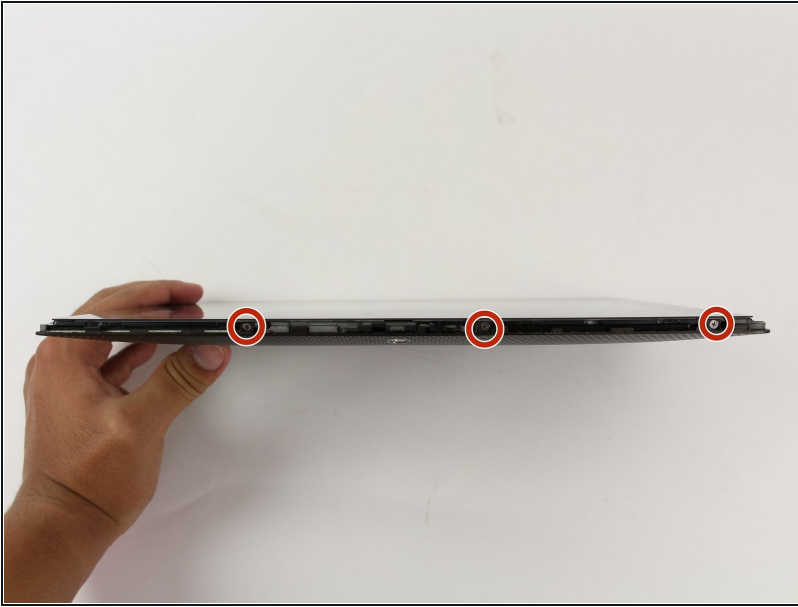
- Use the Plastic Opening Tool to pry between the main tablet body and the outer rim casing. Remove the outer rim casing by prying all the way around the device and pulling the rim upward.
- ① The physical buttons are located on the outside of the rim on the right side, proceed with the guide to locate internal buttons.

## Step 3



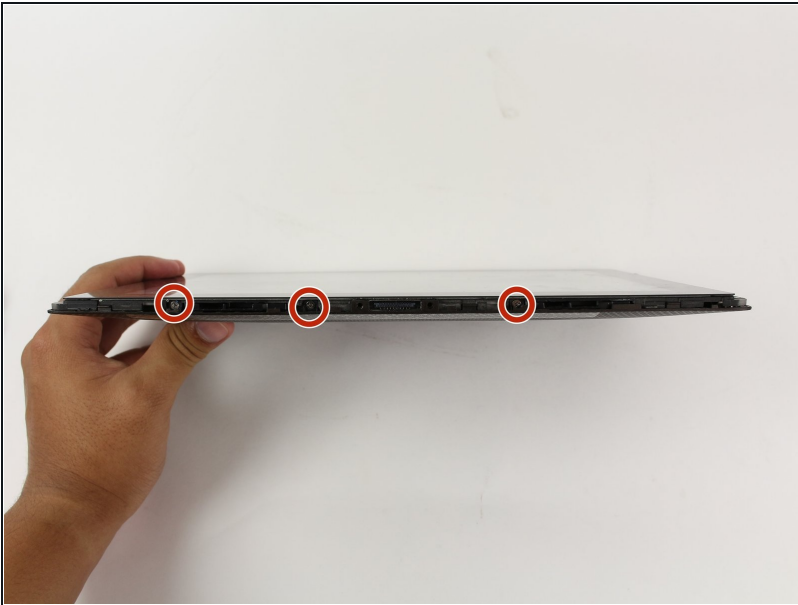
- Remove the four 2 millimeter Phillips #00 screws at the corners of the tablet.

## Step 4



- Use a Phillips #00 Screwdriver to remove the three 3 millimeter screws securing the front panel to the back panel found above the camera area, on the top portion of the tablet.

## Step 5



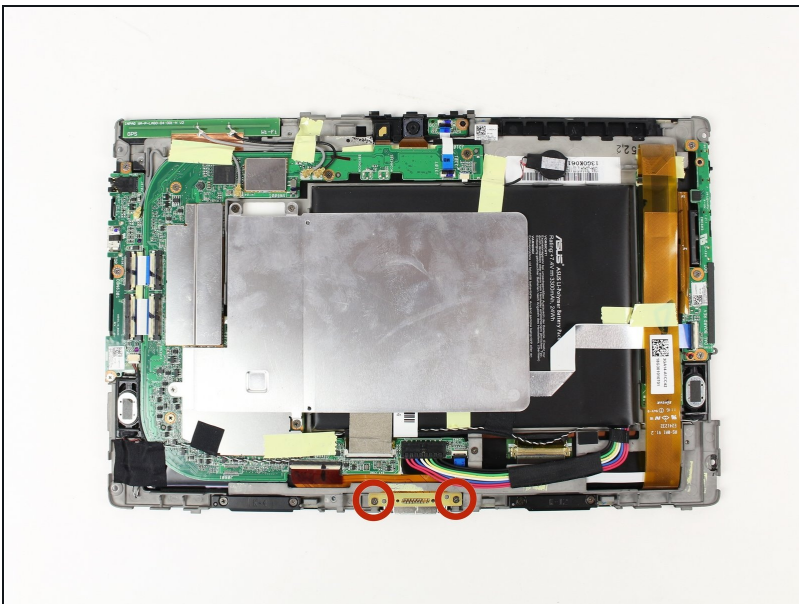
- Use a Phillips #00 Screwdriver to remove the three 3 millimeter screws securing the front panel to the back panel found on the bottom portion of the tablet near the port.

## Step 6



- Remove back panel by pulling away from the remaining device.

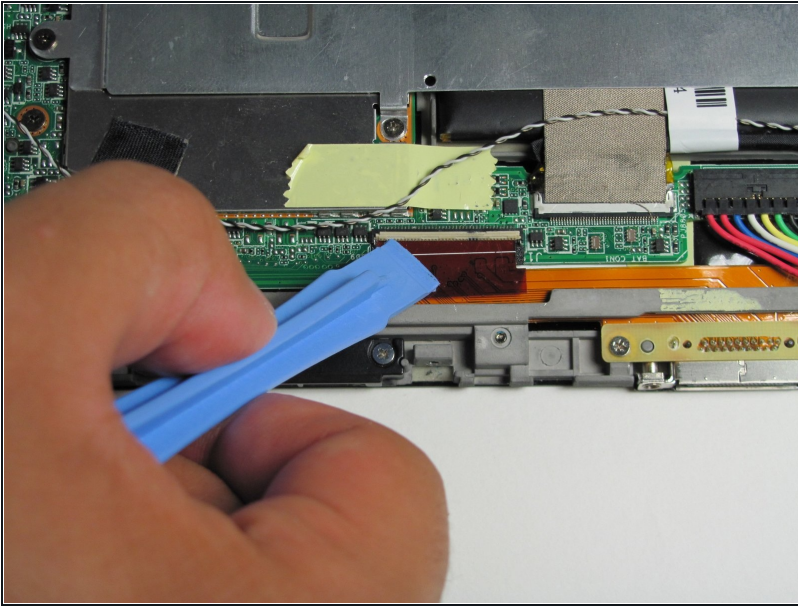
## Step 7 — Remove screws



- Use a Phillips #00 Screwdriver to remove the two 3 millimeter screws found at the bottom center of the tablet near the charging port.

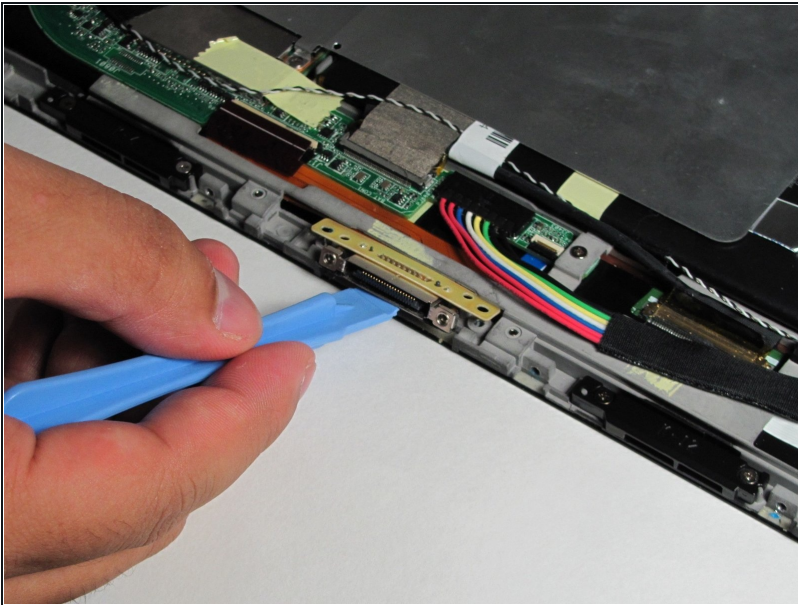


## Step 8 — Lift up white flap



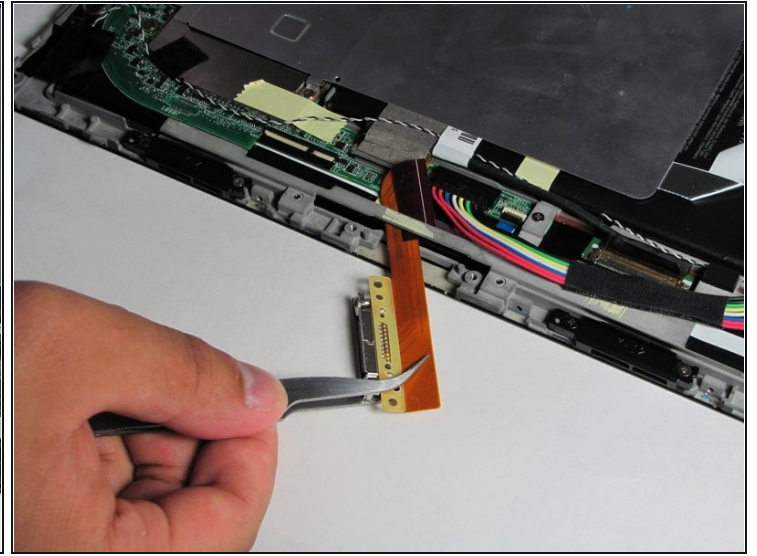
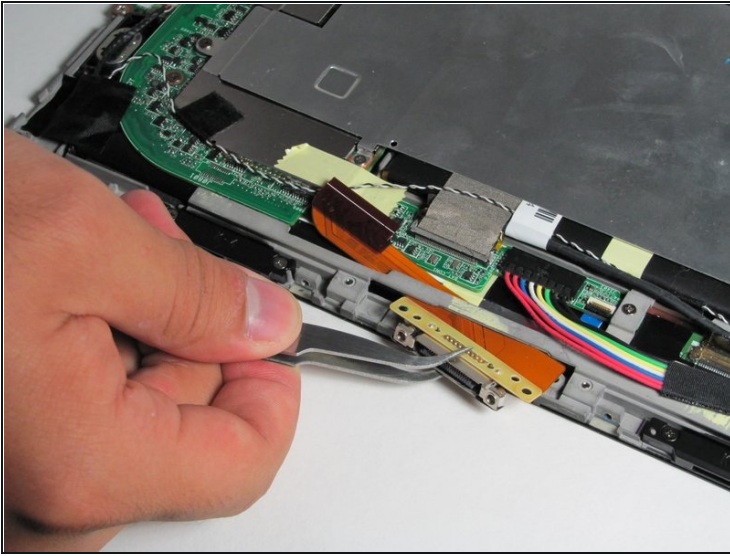
- Use Plastic Opening Tool to lift up the white flap found to the left of the charging port.

## Step 9



- Use Plastic Opening Tool to lift up the charging port.

## Step 10 — Pull out panel



- Use [Tweezers](#) to wiggle the port panel out from underneath the metal bar.

⚠ Make sure red tab does not get caught underneath the metal bar when pulling out the port component, otherwise it will damage the charging port panel.

---

To reassemble your device, follow these instructions in reverse order.