



Nest Learning Thermostat 2nd Generation

Base Motherboard Replacement

Replacing the base motherboard is necessary if one of the auxiliary sensors are not working. The thermostat comes in two pieces and allows for an easy replacement.

Written By: Rachael Deptula



INTRODUCTION

When replacing the base motherboard, removal from the wall is necessary and power to the thermostat must be turned off. The tools required are the blue opening tools, spudger, and a #0 Phillips screwdriver.



TOOLS:

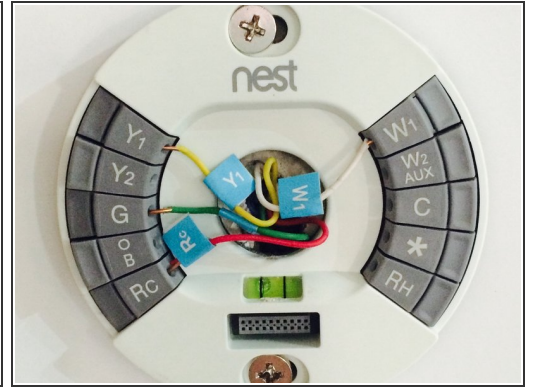
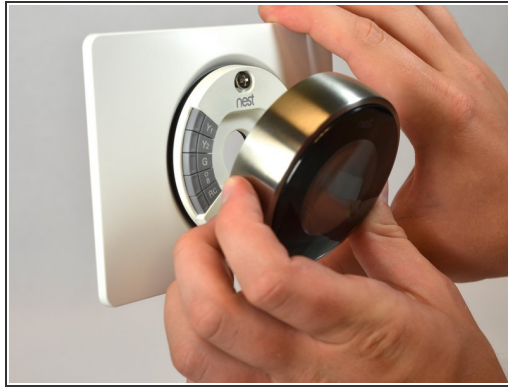
- [Spudger](#) (1)
- [iFixit Opening Tool](#) (1)
- [Phillips #0 Screwdriver](#) (1)



PARTS:

- [Nest Learning Thermostat 2nd Generation Base Motherboard](#) (1)

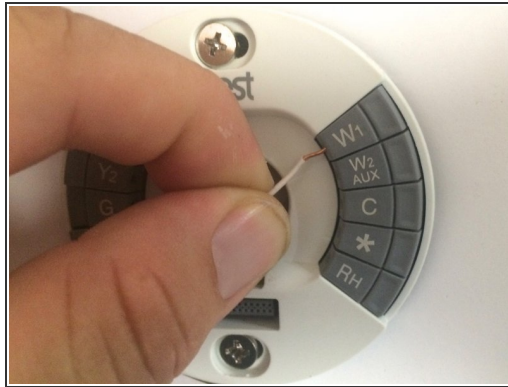
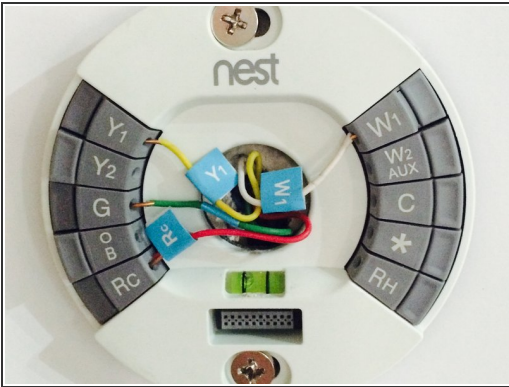
Step 1 — Remove display from wall



⚠ Before disassembling your Nest Thermostat, be sure that your HVAC system is powered off.

- Grasp the display's metal outer ring with your fingers and pull directly away from the wall, leaving the base behind.

Step 2 — Disconnect wires



☑ Remember to turn off the power to your HVAC system and the thermostat.

- Disconnect all wires from the grey spring-loaded connectors. This can be done using your fingers.

Step 3 — Remove screws from wall



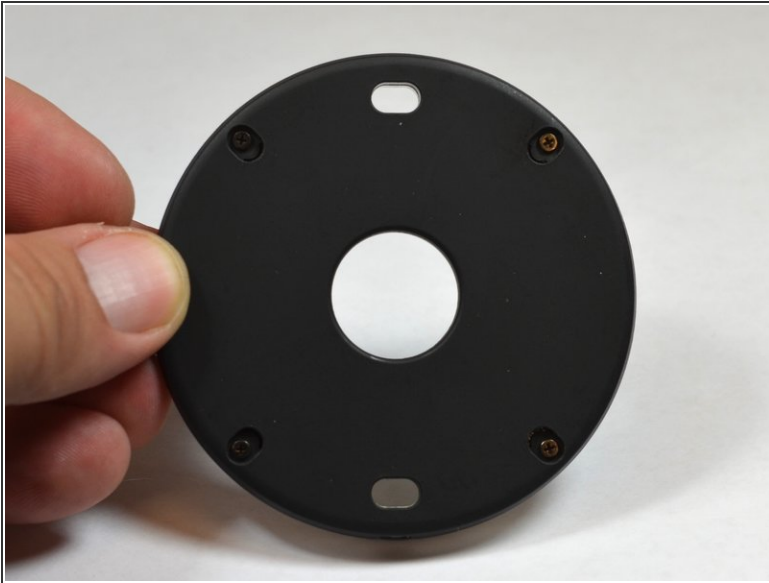
- Remove the two 40mm screws from the base of the thermostat using a #0 Phillips screw driver.

Step 4 — Remove base from trim plate



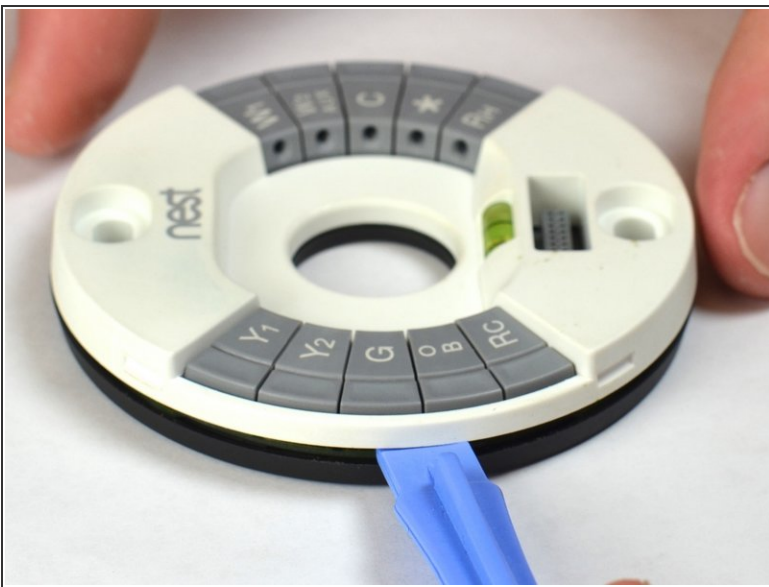
- Unsnap the base from the trim plate (if used) using a plastic opening tool.

Step 5 — Remove screws from back of base



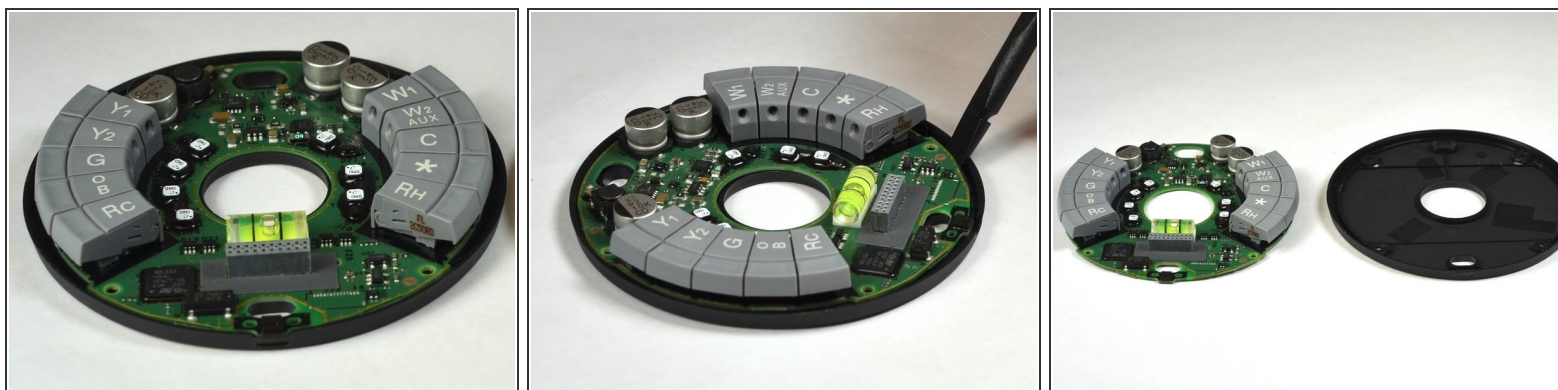
- Turn the base over.
- Remove the four 6 mm screws from the back of the base using a #0 Phillips screwdriver.


Step 6 — Opening base



- Pry the base mother board open from the side using a plastic opening tool.

Step 7 — Remove base motherboard from base back



-  The base mother board is only held together by light adhesive.
- Pry the baseboard from the bottom using the flat end of a spudger.

To reassemble your device, follow these instructions in reverse order.