



# HTC Evo 4G Front Facing Camera Replacement

Use this guide to replace the front-facing camera.

Written By: Walter Galan



# INTRODUCTION

Use this guide to replace the front-facing camera.

---

## TOOLS:

Phillips #00 Screwdriver (1)

Spudger (1)

T5 Torx Screwdriver (1)

Tweezers (1)

iFixit Opening Tool (1)

---

## Step 1 — Rear Panel



- Gently insert an iPod opening tool between the rear panel and the inner rear frame near the headphone jack.
- Use your iPod opening tool to pry up the rear case around the perimeter of the Evo.

## Step 2



- Lift the rear panel off of the inner rear frame.

## Step 3 — Battery



- Using the tip of your finger, lift the battery from the end closest to the camera.
- Remove the battery from the rear inner frame.



## Step 4 — MicroSD card



- Use the flat end of a spudger to pry up the red MicroSD retainer attached to the inner frame.

⚠ The retainer will move about 1 mm and stop. Do not attempt to completely remove the MicroSD card retainer.

## Step 5



- Use a pair of [tweezers](#) to carefully pull the MicroSD card out of its slot in the inner rear frame.

## Step 6 — Rear Inner Frame



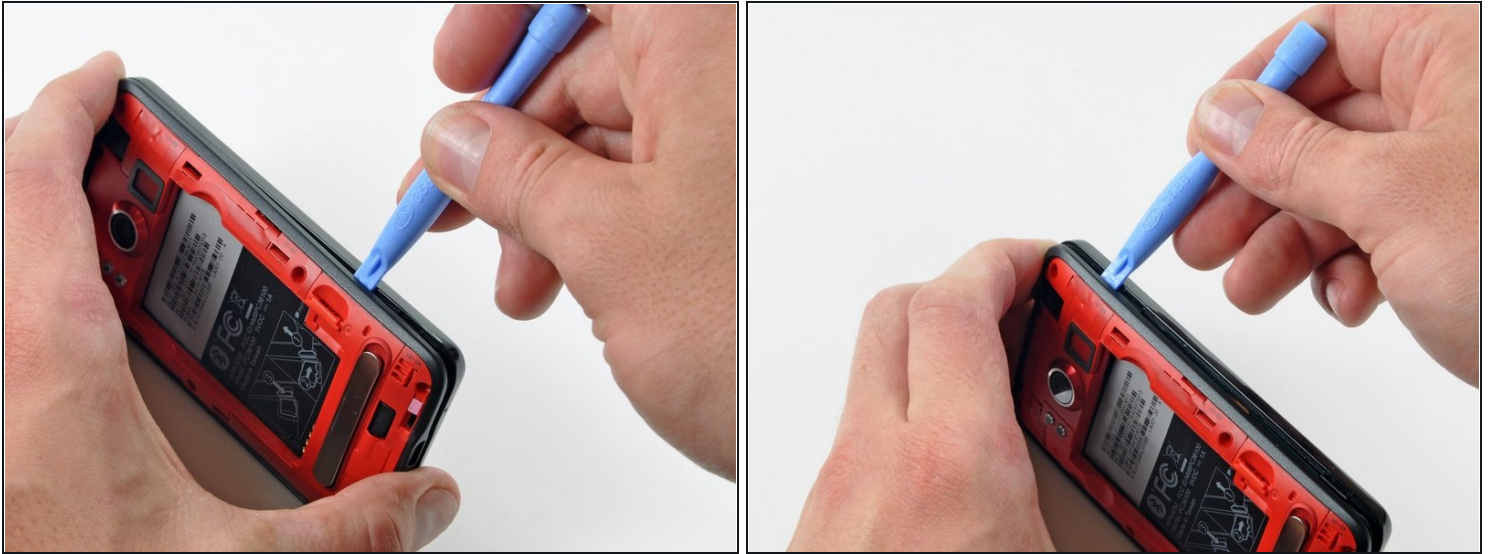
- Remove six T5 Torx screws securing the rear inner frame to the inner case.

## Step 7



- Gently insert an iPod opening tool between the rear inner frame and its plastic surround near the Micro HDMI port.
- Carefully pry the top edge of the rear inner frame away from the front surround of the Evo.

## Step 8



- Insert the iPod opening tool between the rear inner frame and its plastic surround and pry up at several points along the left edge of the Evo.

## Step 9



- Continue the prying procedure, now focusing on detaching the plastic surround from the bottom of the Evo.
- Pry up the rear inner frame along the right edge using the method described in previous steps.
- Eventually work around the entire perimeter of the rear inner frame until it is lifted slightly from the inner case.

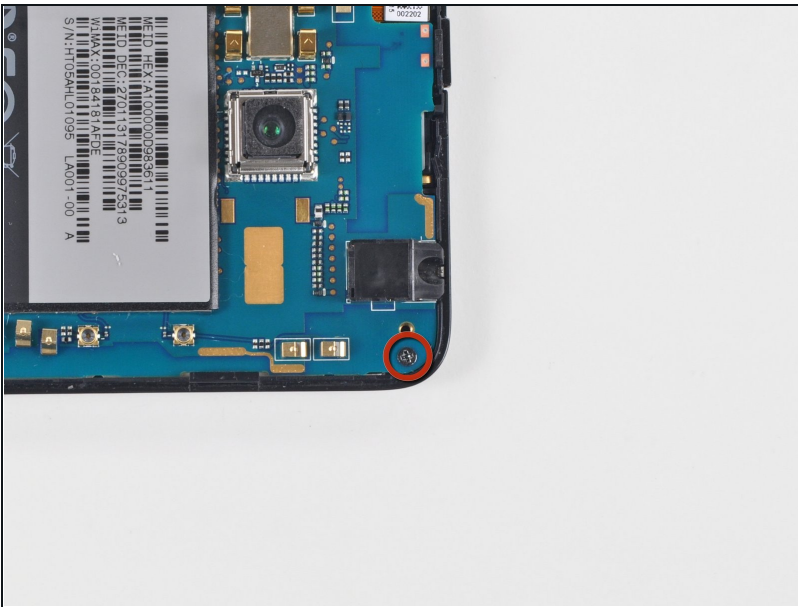


## Step 10



- Remove the rear inner frame from the rest of the Evo.

## Step 11 — Motherboard



- Remove the single Phillips screw securing the motherboard to the inner case near the headphone jack.

## Step 12



- Use the flat end of a spudger to pry the motherboard off the posts securing it to the metal display tray.

⚠ Do not try to completely remove the motherboard just yet. It is still attached by three ribbon cables.

## Step 13

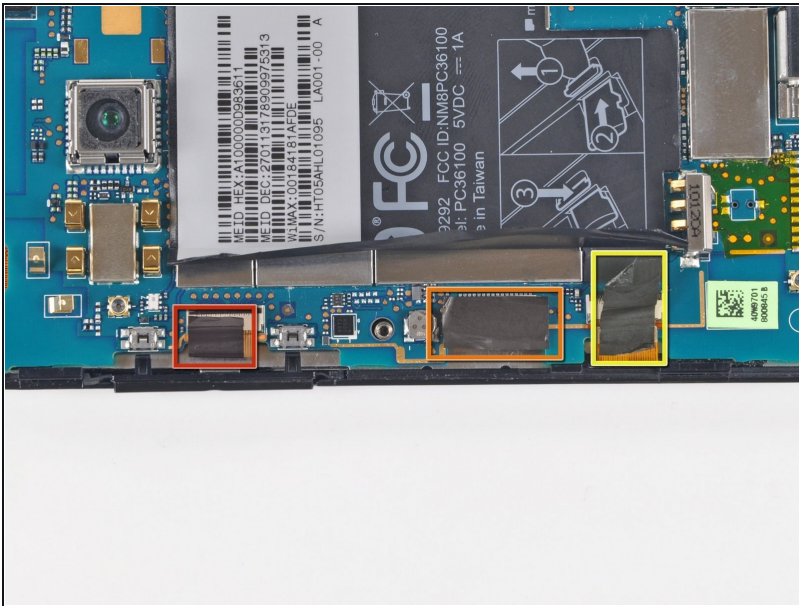


- Carefully peel the device information sticker off the left edge of the motherboard and EMI shield to reveal three connectors covered with tape.

ⓘ It is not necessary to peel the entire device information sticker off the EMI shield.

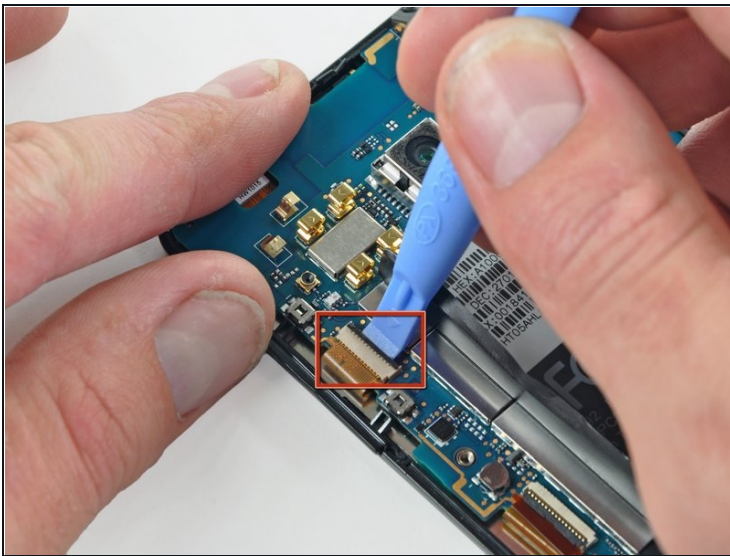


## Step 14



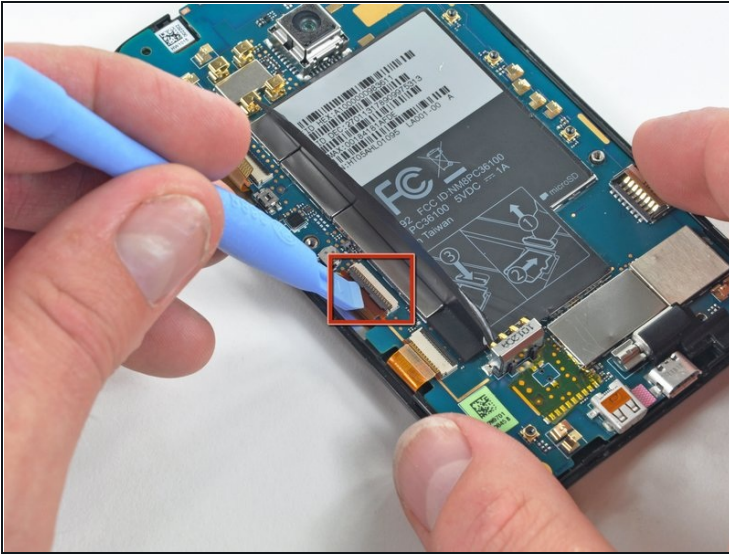
- ① Fold the device information sticker up against the top of the motherboard to keep it out of the way while you work.
- Remove the pieces of tape covering the following ribbon cables:
  - Front-facing camera
  - Front panel ribbon cable
  - Display ribbon cable

## Step 15



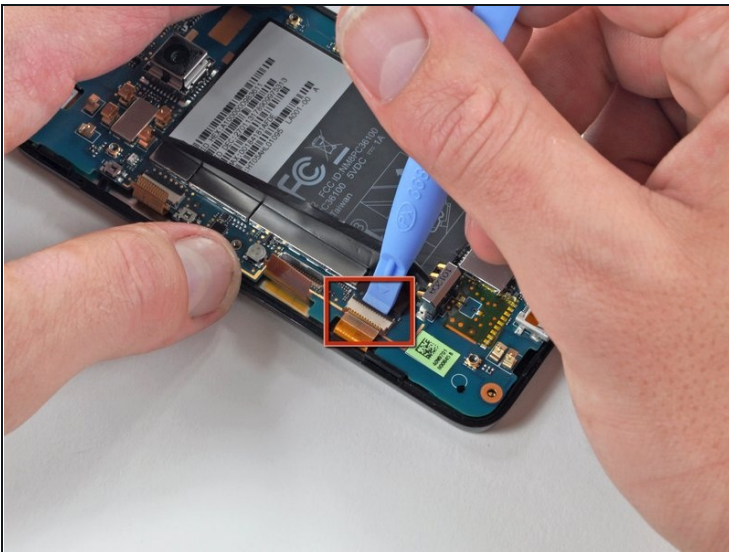
- Using the tip of an iPod opening tool, flip up the front-facing camera ribbon cable retaining flap.
- Be very careful and gentle with these flaps. They are very easy to break or dislodge and equally difficult to reinstall.
- Use a pair of [tweezers](#) to pull the front-facing camera ribbon cable straight out of its socket.

## Step 16



- Using the tip of an iPod opening tool, flip up the front panel ribbon cable retaining flap.
- Use a pair of tweezers to pull the front panel ribbon cable straight out of its socket.

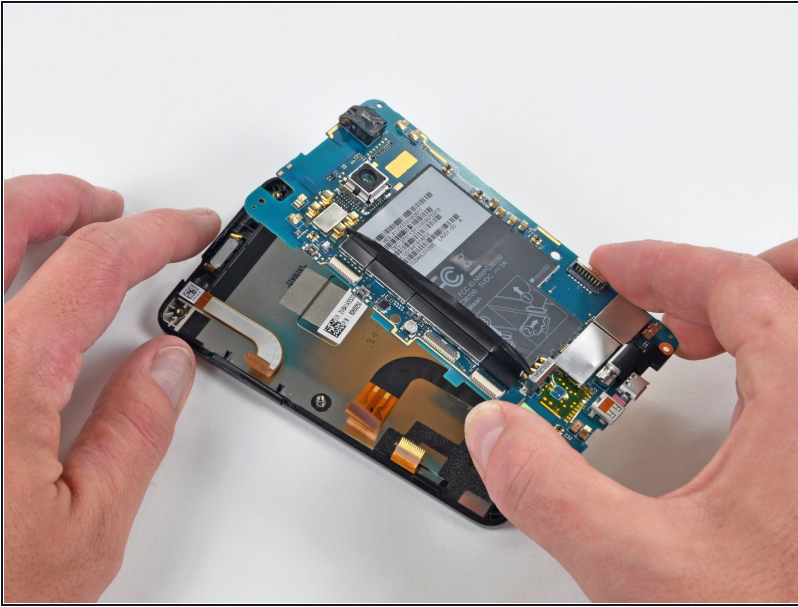
## Step 17



- Using the tip of an iPod opening tool, flip up the display ribbon cable retaining flap.
- Grasp the display ribbon cable with a pair of tweezers and pull it straight out of its socket.

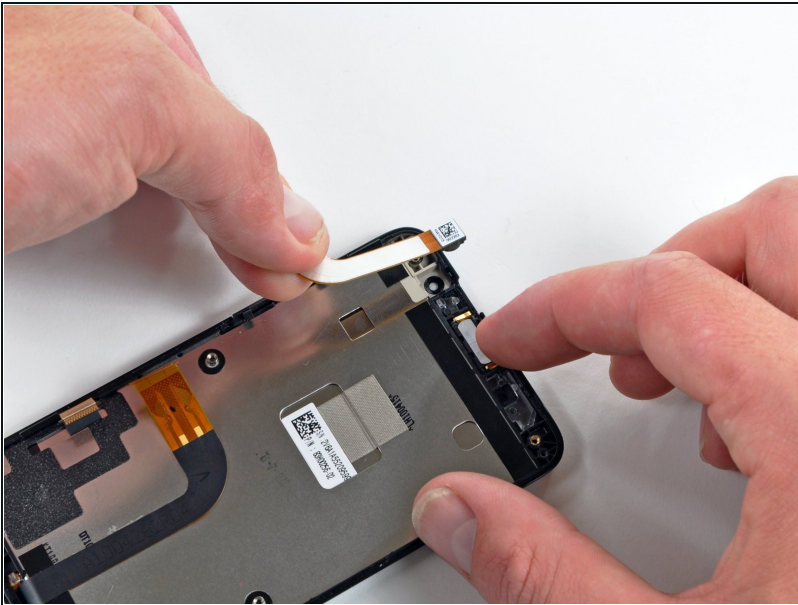


## Step 18



- Carefully lift the motherboard out of the inner case, minding any cables that may get caught.
- ⓘ Be mindful of the top power button and side rocker switch, which may fall out of the front case when the board is removed.

## Step 19 — Front Facing Camera



- Gently lift the front-facing camera out of its recess in the inner case and remove it from the Evo.

---

To reassemble your device, follow these instructions in reverse order.