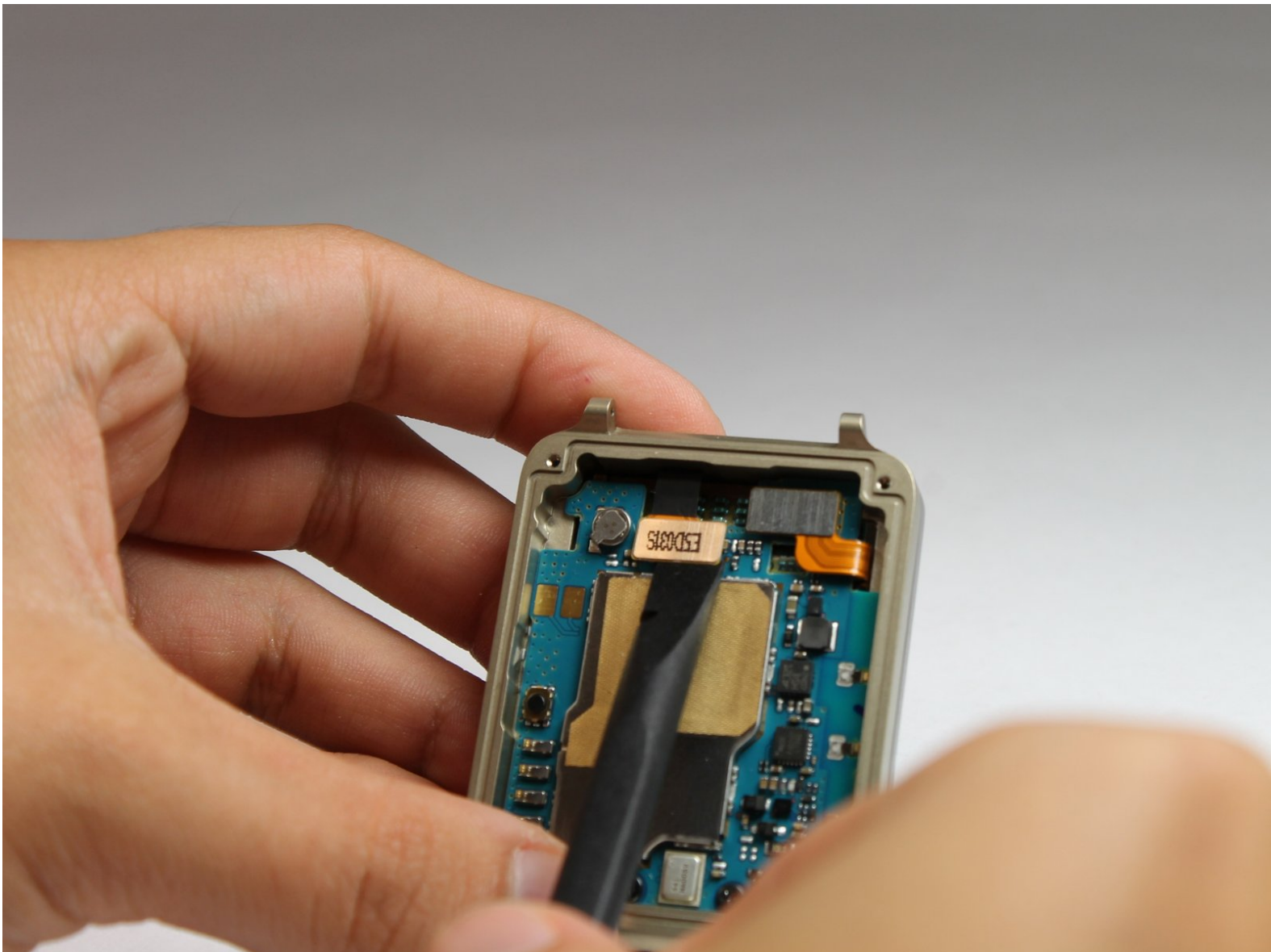




LG G Watch Motherboard Replacement

Use this guide to replace the motherboard in your LG G Watch.

Written By: Meles Anneaud



INTRODUCTION

This guide will show you how to replace the motherboard in your LG G Watch.



TOOLS:

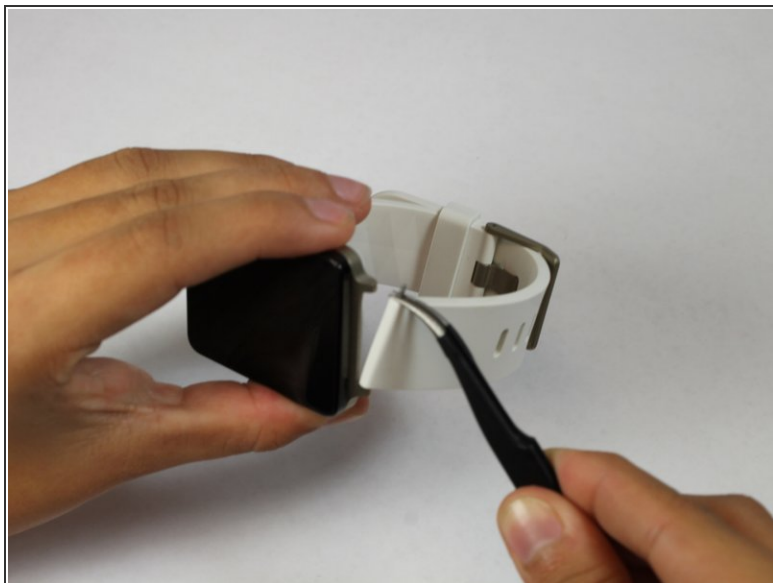
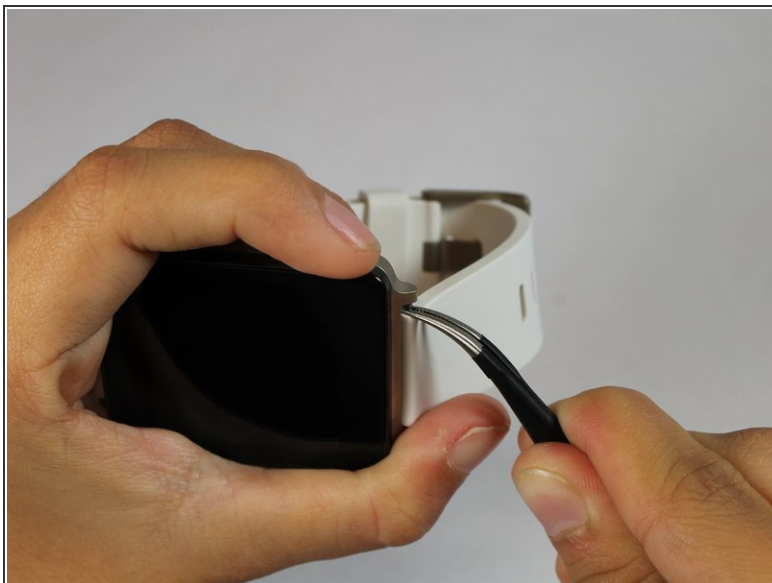
- [Spudger](#) (1)
 - [T5 Torx Screwdriver](#) (1)
 - [Tweezers](#) (1)
 - [iFixit Opening Picks set of 6](#) (1)
 - [Phillips #000 Screwdriver](#) (1)
-



Step 1 — Wristband



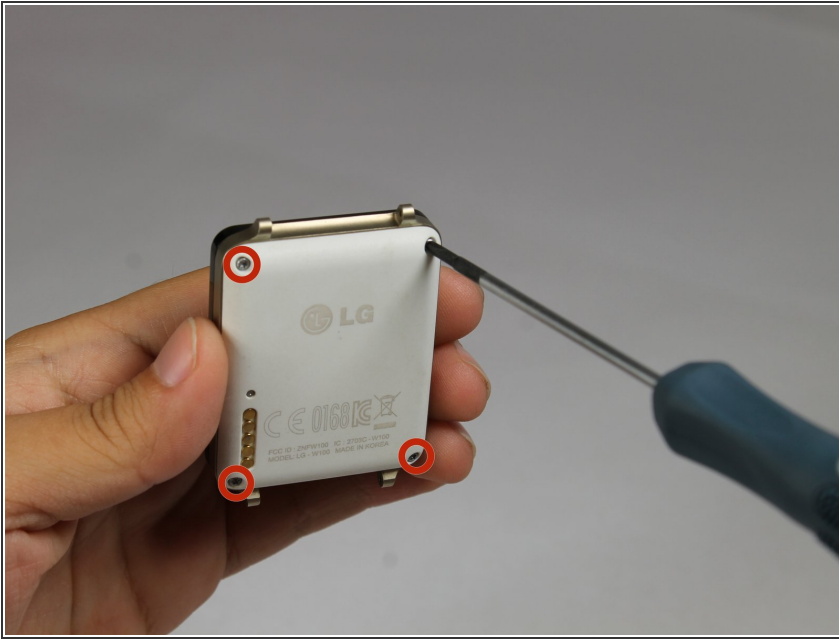
- ⓘ Spring bars attach the two halves of the wristband to the watch body. The spring bar has a shoulder on either end.
- ⓘ Be prepared to apply some pressure with your fingers to perform the following action.
 - First, slide the wristband down on the spring bar to expose the shoulder of the spring bar.
 - Grasp the exposed shoulder with the tweezers to perform the next step.

Step 2



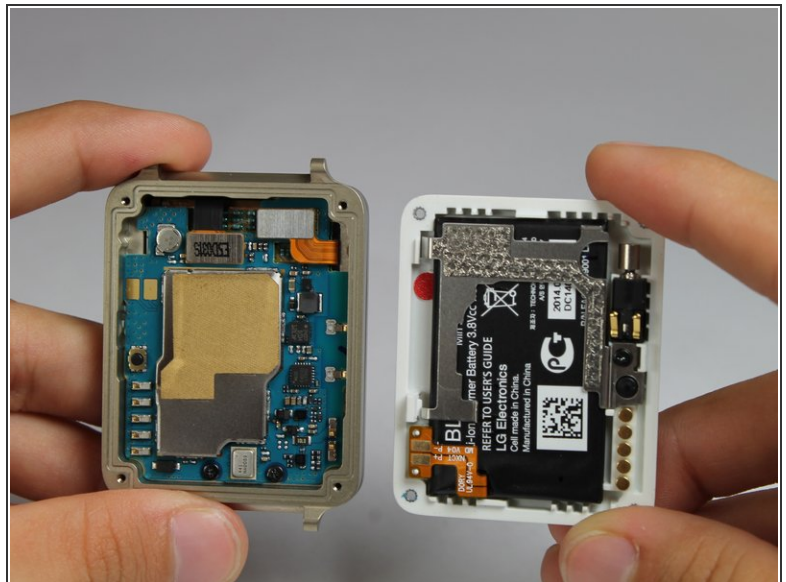
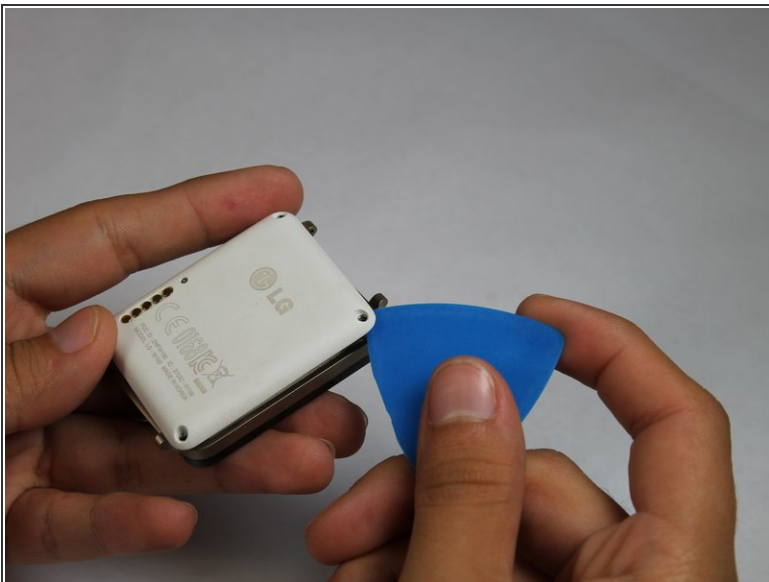
-  This is a challenging step. Do it carefully to prevent the spring bar from flying out of the wristband.
- Use the tweezers to depress the spring bar so that it collapses by a few millimeters and pops out of the hole that was holding it in place.
 - Now carefully pull the other end of the spring bar to detach the wristband from the watch face.
-  Repeat steps 1 and 2 for the other wristband.

Step 3 — Rear Case



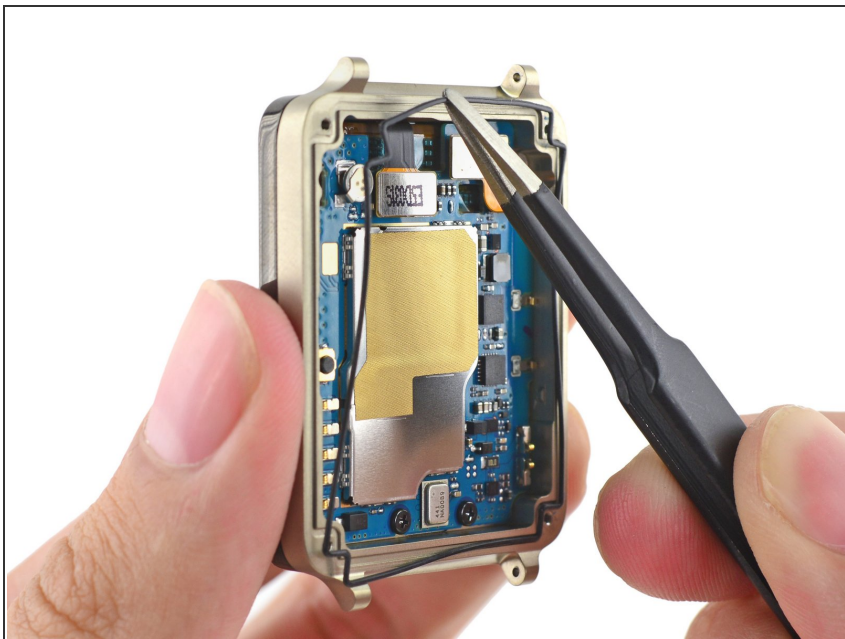
- Use the T5 Torx screwdriver to unscrew the four silver 2mm x 3mm T5 screws that hold the back cover in place.

Step 4



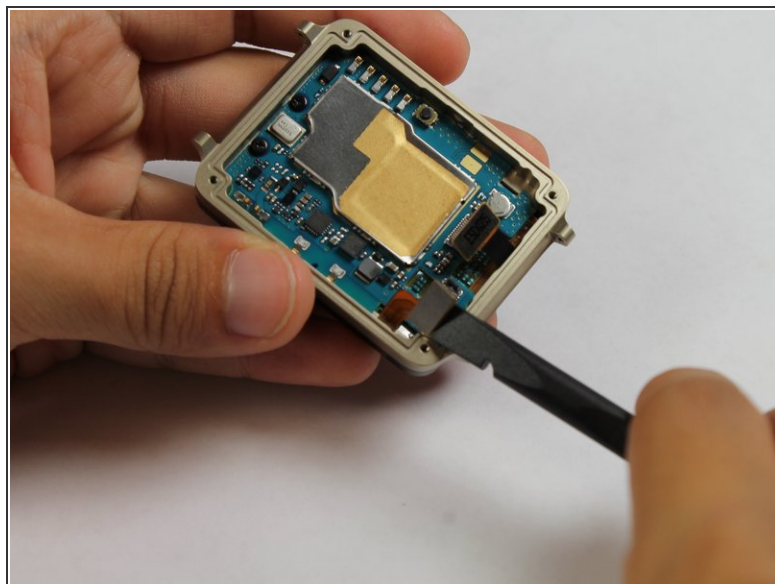
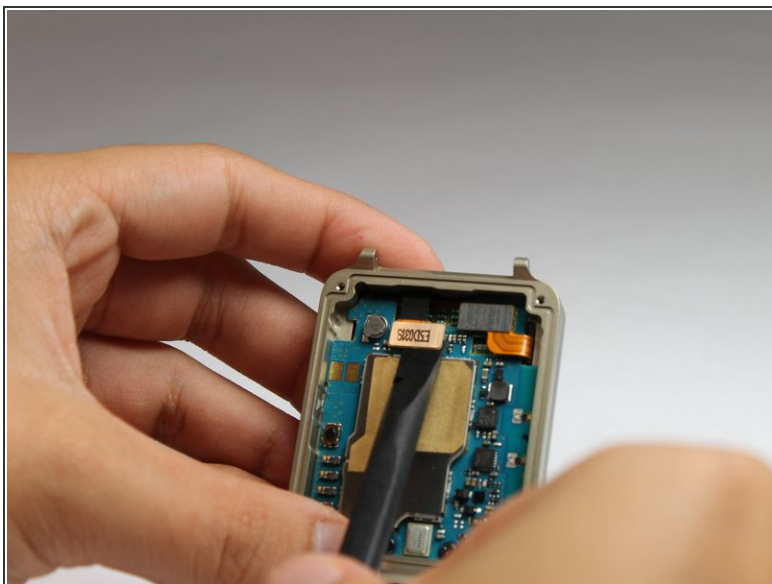
- Slide the opening pick between the rear case and the rest of the device to separate the two halves.
- Gently pull the two halves apart.

Step 5 — Gasket



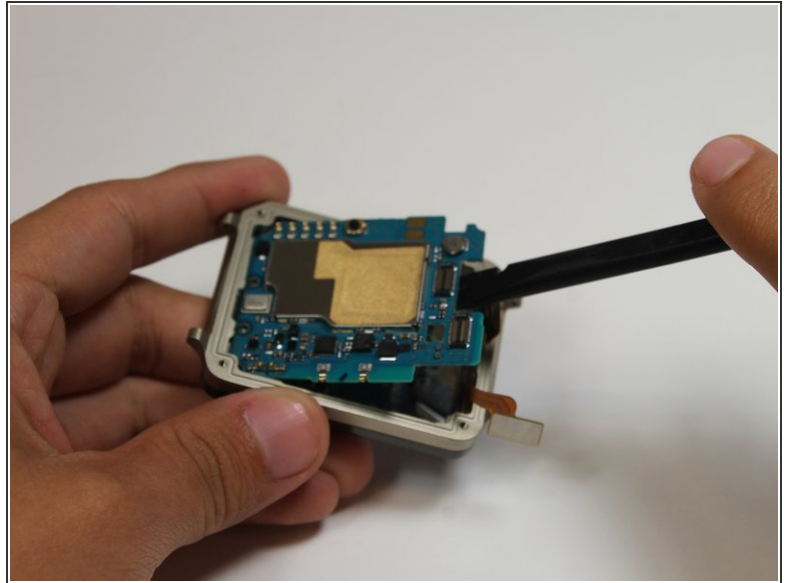
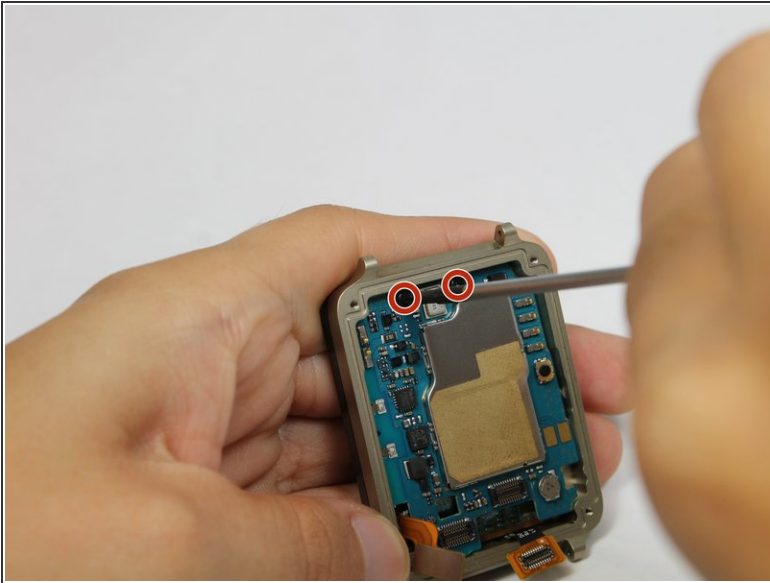
- Use a pair of tweezers to remove the gasket that lies embedded in a groove that runs around the perimeter of the front half.

Step 6 — Motherboard



- Use the spudger to gently lift up and disconnect the display connector.
- Now use the spudger to disconnect the digitizer connector.

Step 7



- Use a Phillips #000 screwdriver to remove the two black PHO 2.5mm x 3mm screws.
- Use the spudger to gently remove the motherboard.

To reassemble your device, follow these instructions in reverse order.