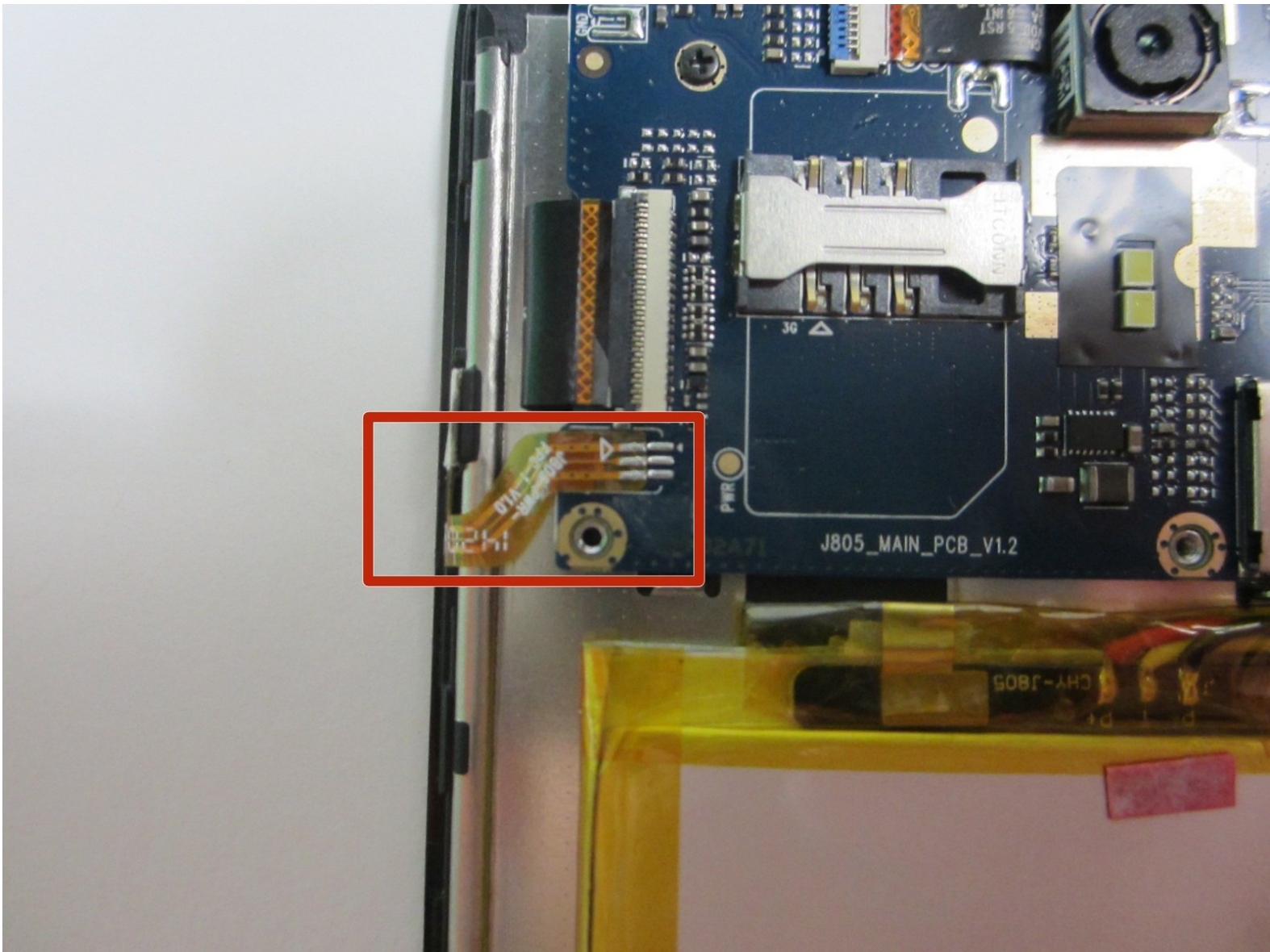




# Blu Studio HD 6.0 Power Button Replacement

In this guide you will be replacing the power button in your Blu Studio 6.0 HD.

Written By: Ernesto Diaz



# INTRODUCTION

Before starting make sure you have your soldering workstation ready for use.

---

## TOOLS:

- [iFixit Opening Tools](#) (1)
  - [Phillips #00 Screwdriver](#) (1)
  - [Tweezers](#) (1)
  - [Soldering Workstation](#) (1)
-

## Step 1 — Rear Case



- Begin by making sure your Blu Studio is turned off.

## Step 2 — Back Panel.



- To begin the removal of your back panel, first locate the lift tab on the bottom-right corner.

### Step 3



- Next, gently slide your thumb (or plastic tool if you prefer) down the seam running the length of your Blu Studio until the rear panel is completely removed.
- Your rear panel should be placed nearby and in a safe location until you are finished with your task.



## Step 4 — Midframe



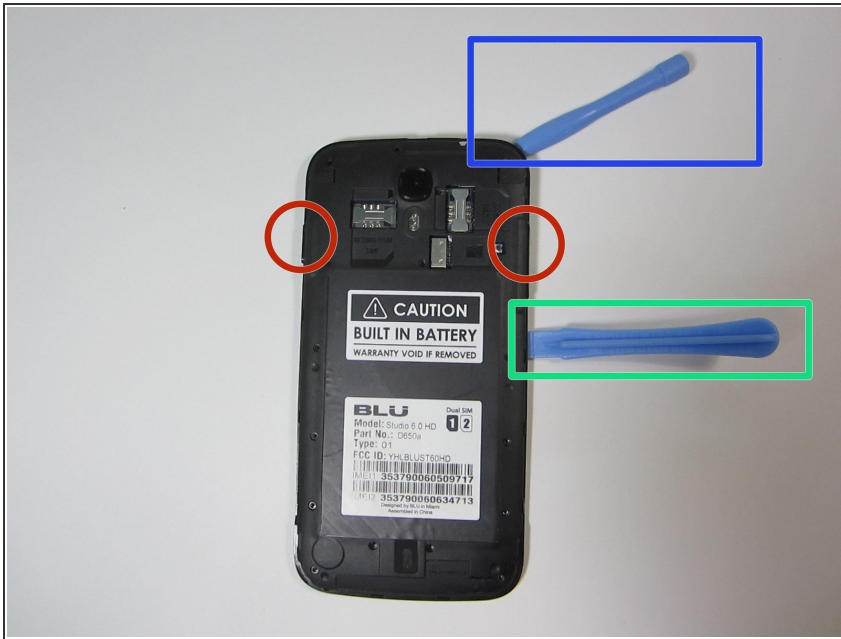
- With your back panel already removed from the previous guide you'll need to acquire a Philips head screw driver size (PH00)

## Step 5



- Next proceed to remove all 16 screws (2.5mm in length), all screws are the same size so getting them mixed up will not be an issue later on.
- One of the lower right hand screws will be hidden under a sticker.

## Step 6



- After removing all 16 screws you can begin the process of removing the battery housing panel.
- You will need to use the thinner plastic prying tool to slowly outline the seam of the case starting from the top (near the camera).
- Try to be careful around the side buttons as the plastic is weakest there.
- After the top half of the case has been opened insert the thicker prying tool to keep the case open. This will help as the battery and battery housing have a suction cup like action that keeps them from separating.

## Step 7



- At this point your battery, motherboard, rear camera, and front camera should all be readily available for fixing. Happy fixing.

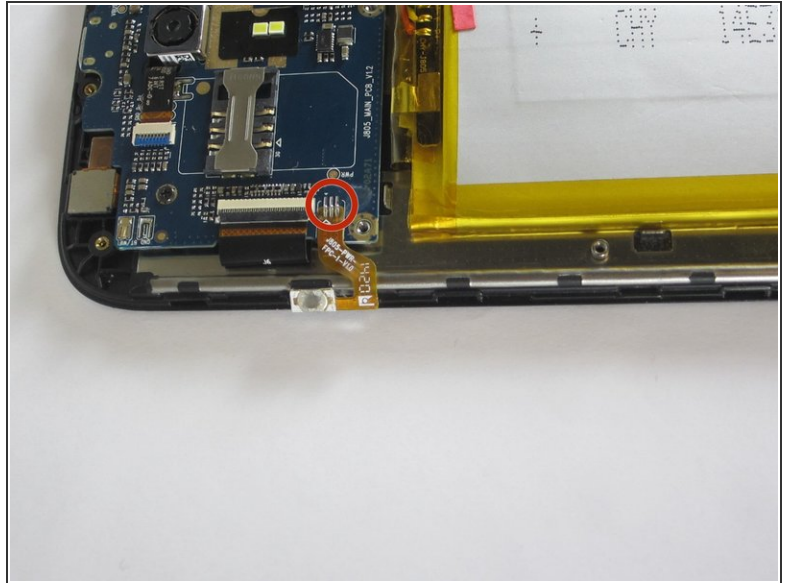
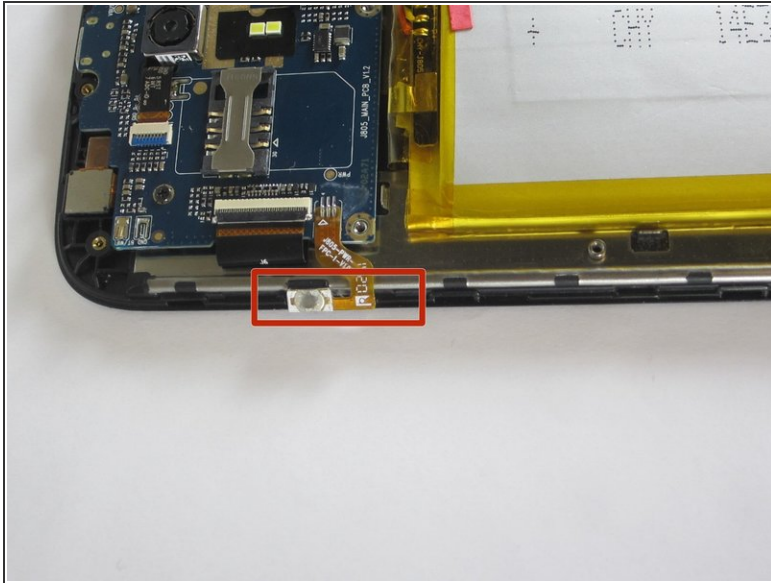
## Step 8 — Locate the power button.



- The power button is located on the rear-left side of your phone just above the battery.

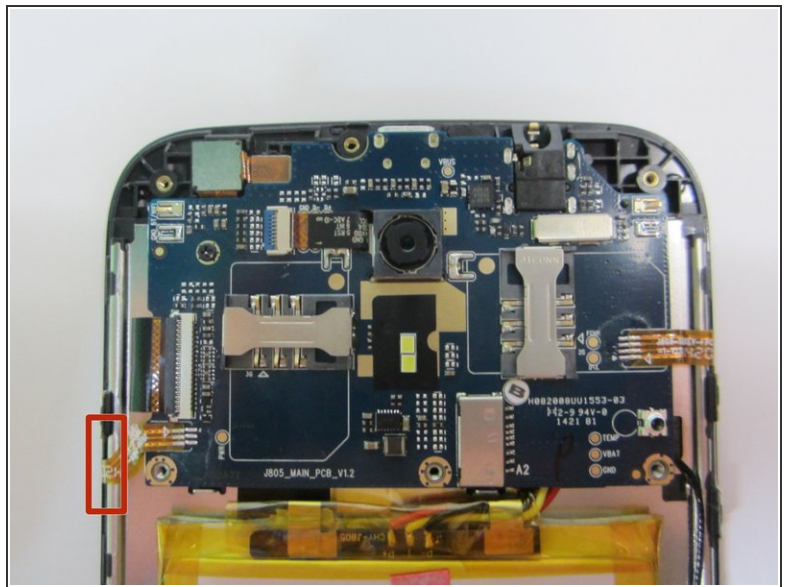
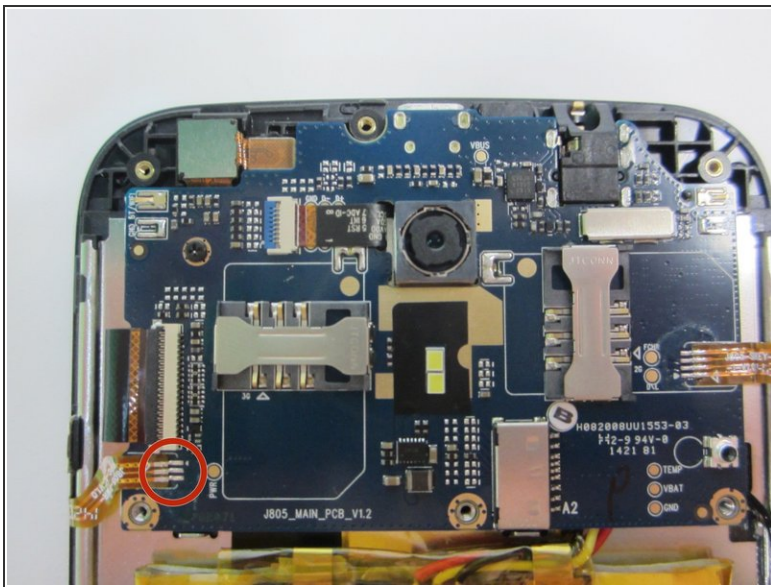


## Step 9 — Separate the old button.



- Lift the button very carefully.
- Then unsolder the connections.

## Step 10 — Solder the new button.



- Solder the new power button in the spot shown in the picture.
- Fit the button on the side of the phone.



To reassemble your device, follow these instructions in reverse order.