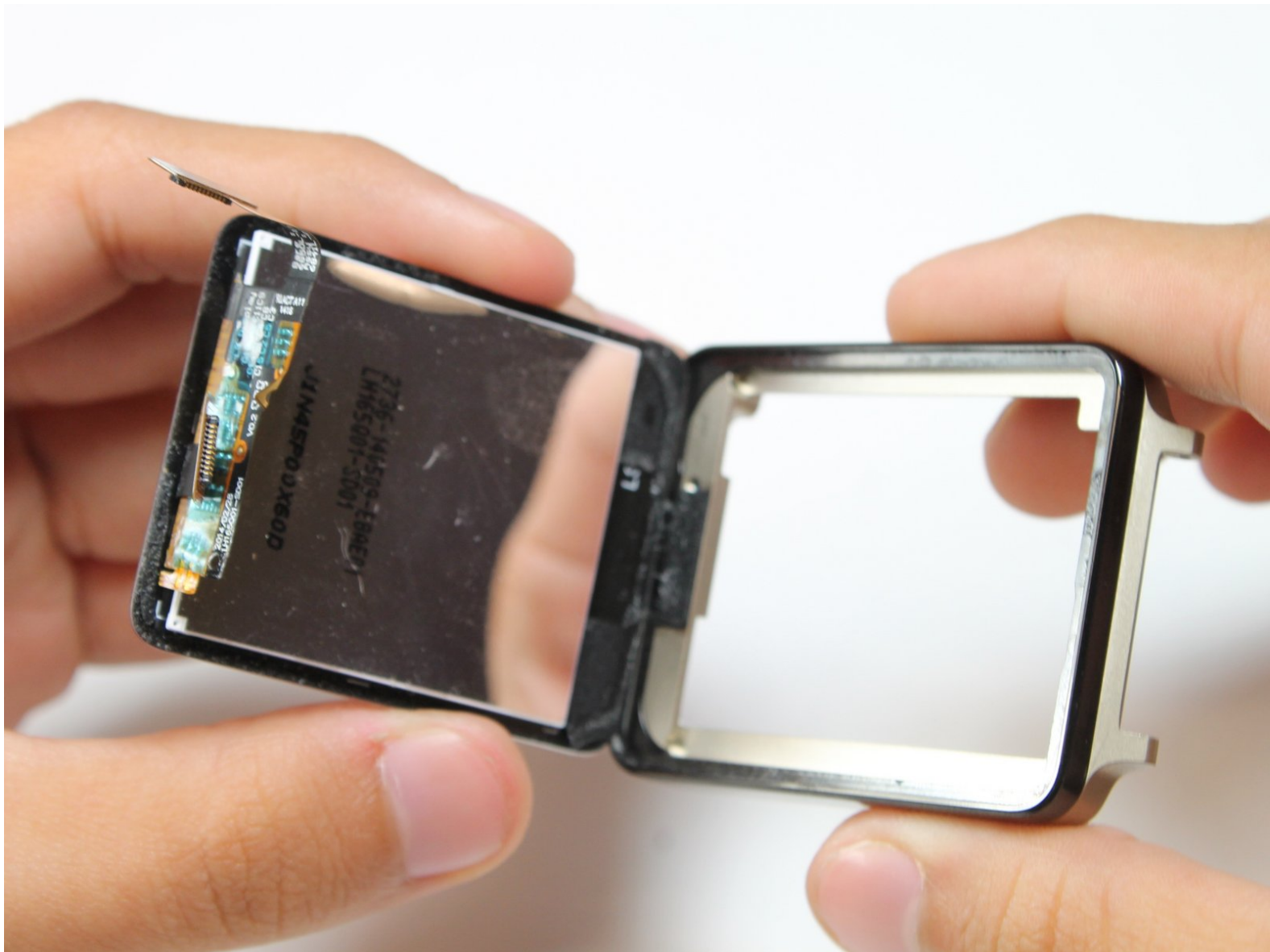




LG G Watch Display Assembly Replacement

Damaged the screen of your LG G Watch? Don't worry! With this guide you can replace your broken screen with ease.

Written By: Mandy McGarry





TOOLS:

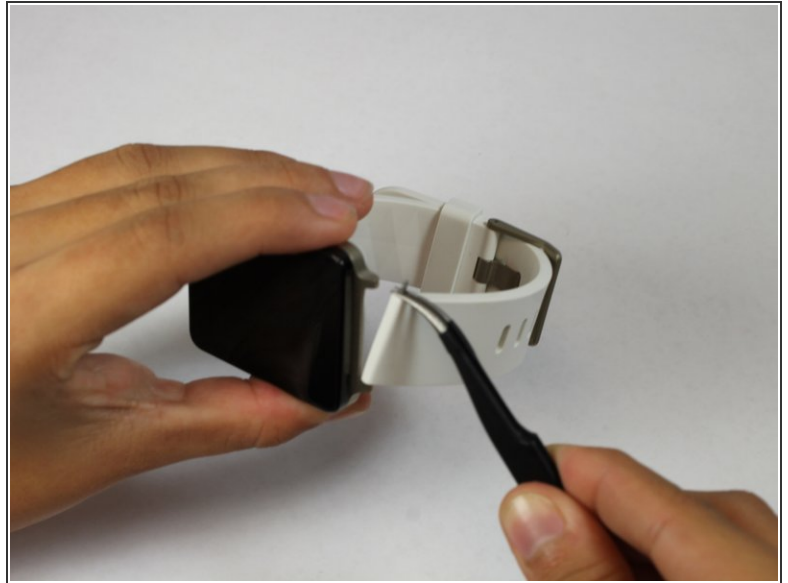
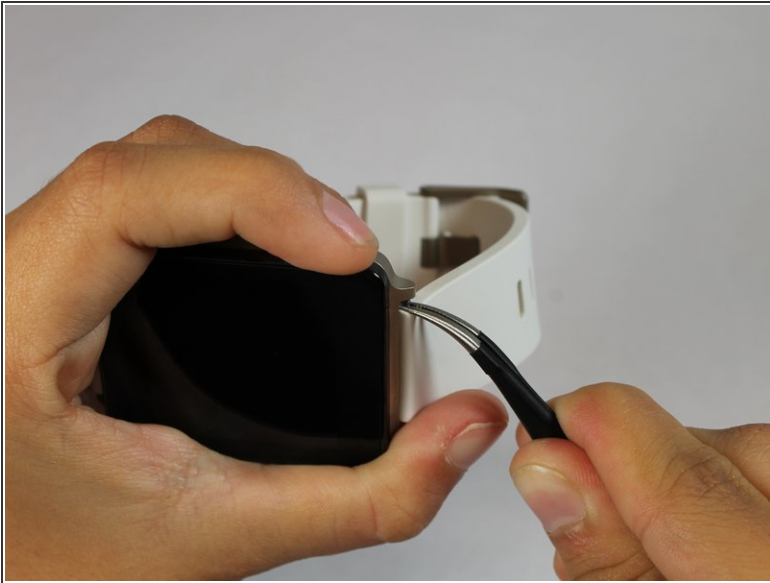
- [Spudger](#) (1)
- [T5 Torx Screwdriver](#) (1)
- [Tweezers](#) (1)
- [iFixit Opening Picks set of 6](#) (1)
- [Phillips #000 Screwdriver](#) (1)



Step 1 — Wristband



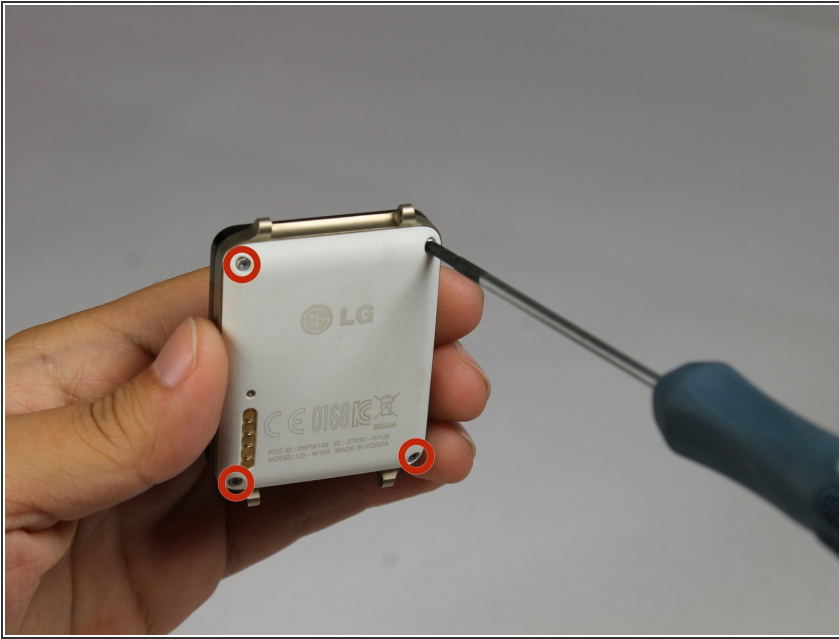
- ⓘ Spring bars attach the two halves of the wristband to the watch body. The spring bar has a shoulder on either end.
- ⓘ Be prepared to apply some pressure with your fingers to perform the following action.
 - First, slide the wristband down on the spring bar to expose the shoulder of the spring bar.
 - Grasp the exposed shoulder with the tweezers to perform the next step.

Step 2



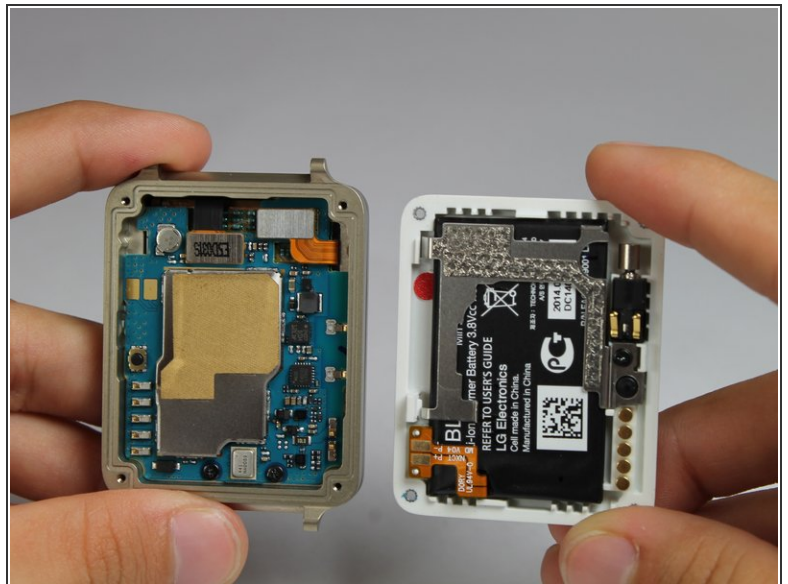
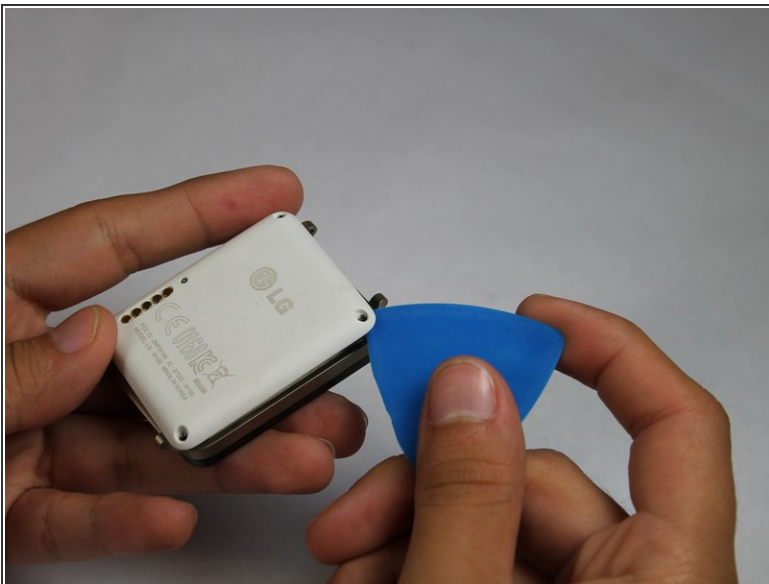
-  This is a challenging step. Do it carefully to prevent the spring bar from flying out of the wristband.
- Use the tweezers to depress the spring bar so that it collapses by a few millimeters and pops out of the hole that was holding it in place.
 - Now carefully pull the other end of the spring bar to detach the wristband from the watch face.
-  Repeat steps 1 and 2 for the other wristband.

Step 3 — Rear Case



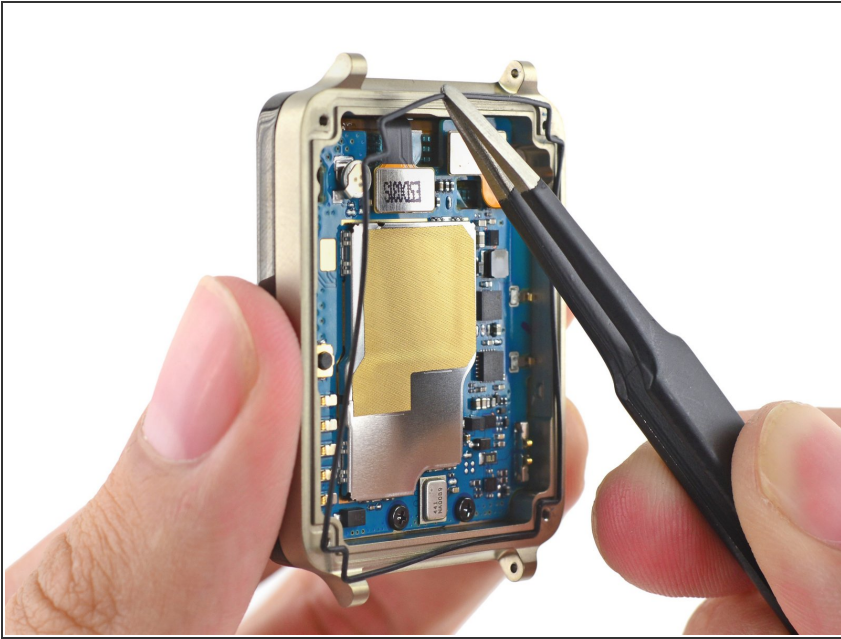
- Use the T5 Torx screwdriver to unscrew the four silver 2mm x 3mm T5 screws that hold the back cover in place.

Step 4



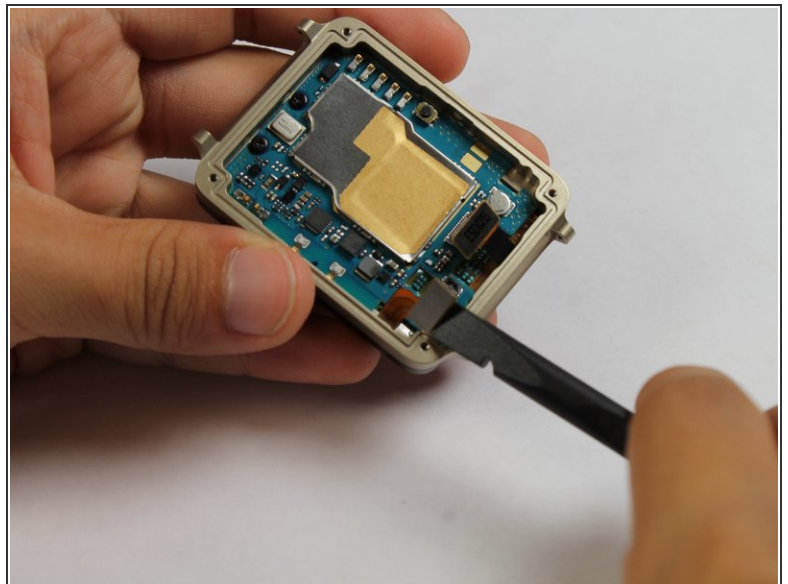
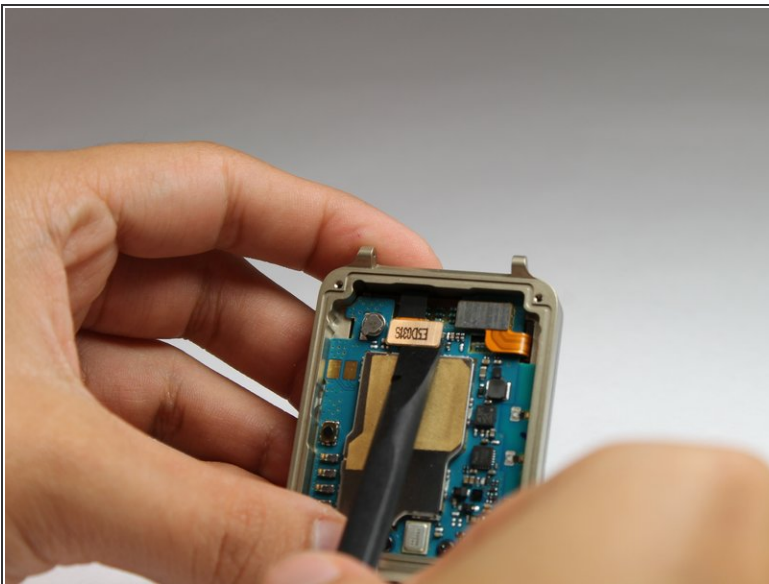
- Slide the opening pick between the rear case and the rest of the device to separate the two halves.
- Gently pull the two halves apart.

Step 5 — Gasket



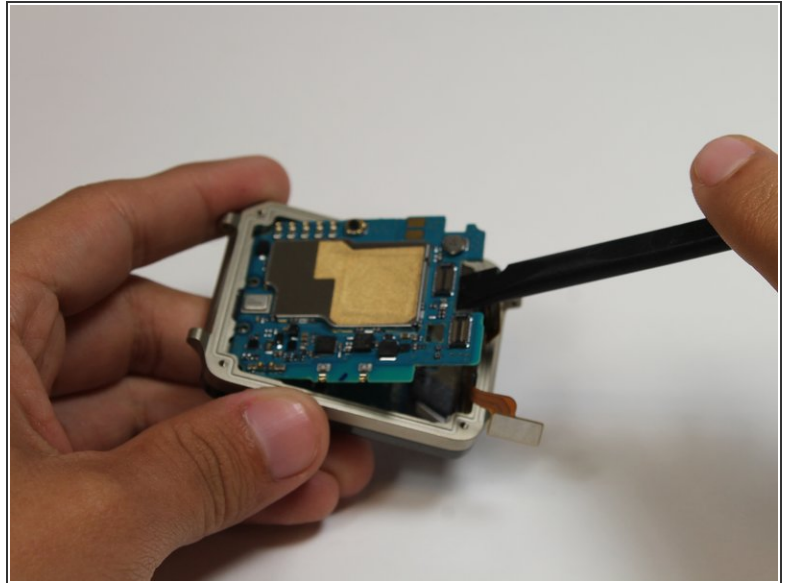
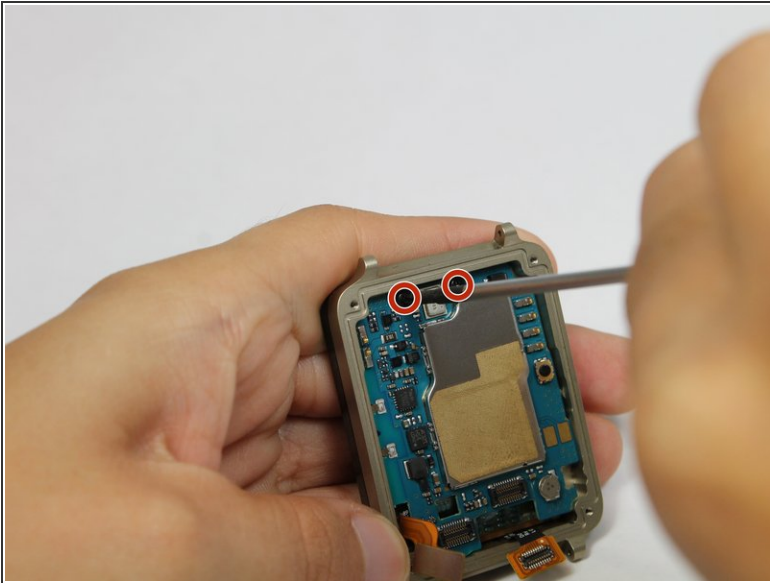
- Use a pair of tweezers to remove the gasket that lies embedded in a groove that runs around the perimeter of the front half.

Step 6 — Motherboard



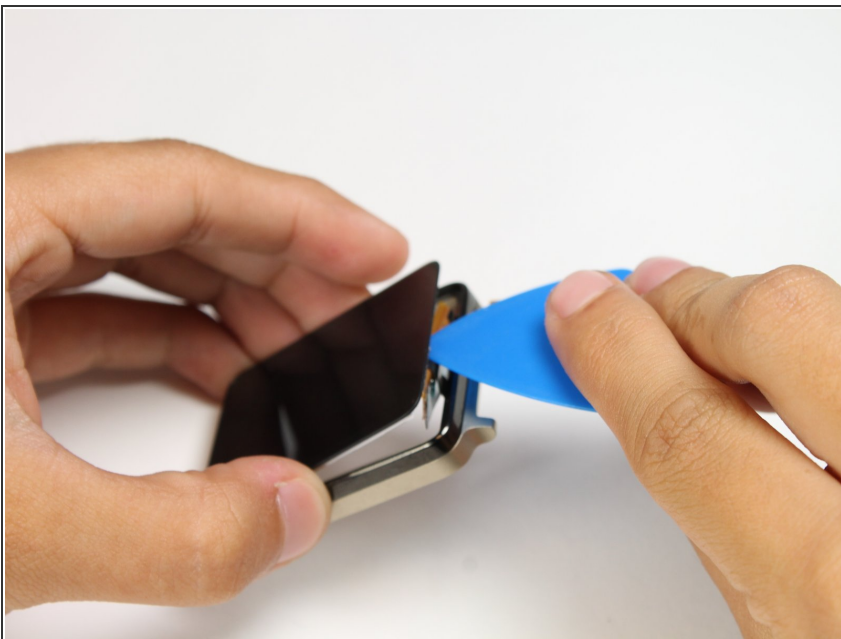
- Use the spudger to gently lift up and disconnect the display connector.
- Now use the spudger to disconnect the digitizer connector.

Step 7



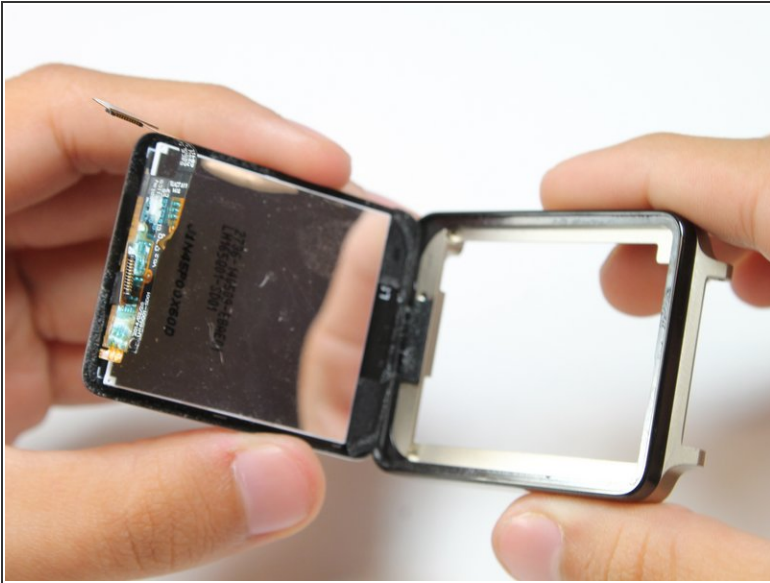
- Use a Phillips #000 screwdriver to remove the two black PHO 2.5mm x 3mm screws.
- Use the spudger to gently remove the motherboard.

Step 8 — Removing the screen



- Apply a small amount of pressure to the back of the LCD to create a gap for the opening pick.
- Gently work the pick around the perimeter of the device to loosen up the adhesive.
- ⓘ An iOpener may be necessary to help loosen up the adhesive. Refer to our [iOpener guide](#) for info on how to use it.

Step 9



- After using the pick to loosen the adhesive, simply pull the display assembly up from the metal bezel.

To reassemble your device, follow these instructions in reverse order.