



Mac mini Mid 2010 Hard Drive Replacement

Internal Prereq.

Written By: Andrew Bookholt



INTRODUCTION

Internal Prereq.



TOOLS:

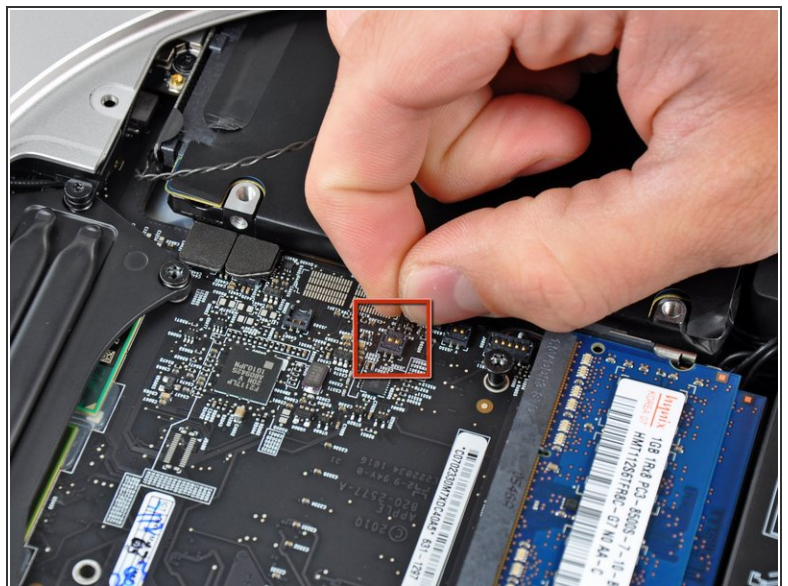
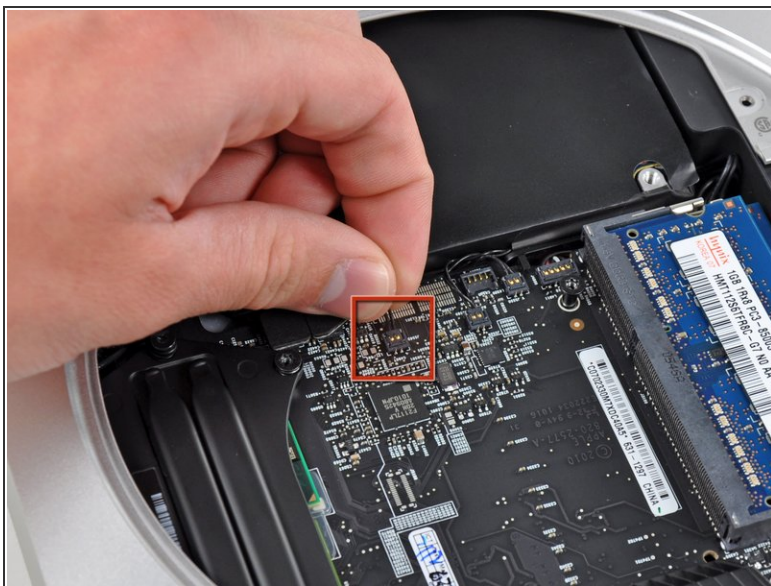
- [T6 Torx Screwdriver](#) (1)
 - [TR8 Torx Security Screwdriver](#) (1)
 - [Spudger](#) (1)
-

Step 1 — Hard Drive



- Remove the following three screws:
 - One 5.0 mm T8 Torx or 2.0 mm Hex screw (either will work)
 - One 16.2 mm T6 Torx screw
 - One 26 mm T6 Torx standoff
- ⓘ Note: This standoff may have been removed with the fan.

Step 2



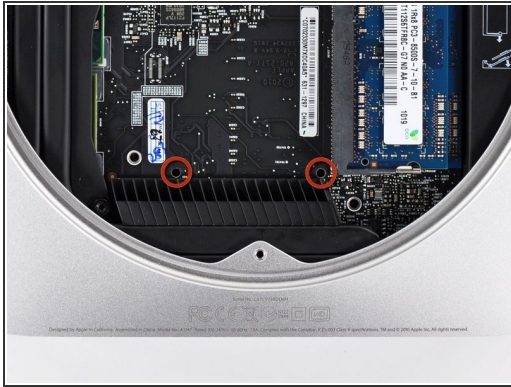
- Carefully pull the wires for both hard drive thermal sensors upward to lift their connectors up and out of their respective sockets on the logic board.

Step 3



- Use the flat end of a spudger to pry both the hard drive and optical drive connectors up out of their sockets on the logic board.

Step 4



i For enough clearance to remove the hard drive, the logic board must be slightly removed. To accomplish this, two cylindrical rods must be inserted into the holes highlighted in red.

⚠ Inserting instruments into any logic board holes other than the ones highlighted in red may severely damage the logic board.

- Insert a Mac mini Logic Board Removal Tool into the two holes highlighted in red. Be sure it makes contact with the outer case below the logic board before proceeding.
- i** If you don't have a Logic Board Removal Tool handy, you can use two tools having a maximum diameter of 2.5 mm instead. Just insert one into each of the highlighted holes.
- Carefully pull the tool toward the I/O board. The logic board and I/O board assembly should slightly slide out of the outer case.
- Cease prying when the I/O board is visibly separated from the outer case. Remove the Mac mini Logic Board Removal tool.

Step 5



- Simultaneously push the two plastic clips on the far left and right sides of the I/O board toward the middle of the I/O board and pull the I/O board slightly away from the outer case.

⚠ Pull the I/O board/logic board assembly out of the outer case a maximum of 5 mm. Pulling the assembly out further may damage the IR sensor connector (highlighted in red in the third picture).

Step 6



- Lift the hard drive from the edge nearest the logic board and remove it from the mini, minding the RAM socket and any cables that may get caught.
- ☑ When reinstalling the hard drive, be sure the two T8 Torx lugs on its far end are inserted into the two rubber grommets highlighted in red in the second picture before sliding the logic board back into place.

To reassemble your device, follow these instructions in reverse order.