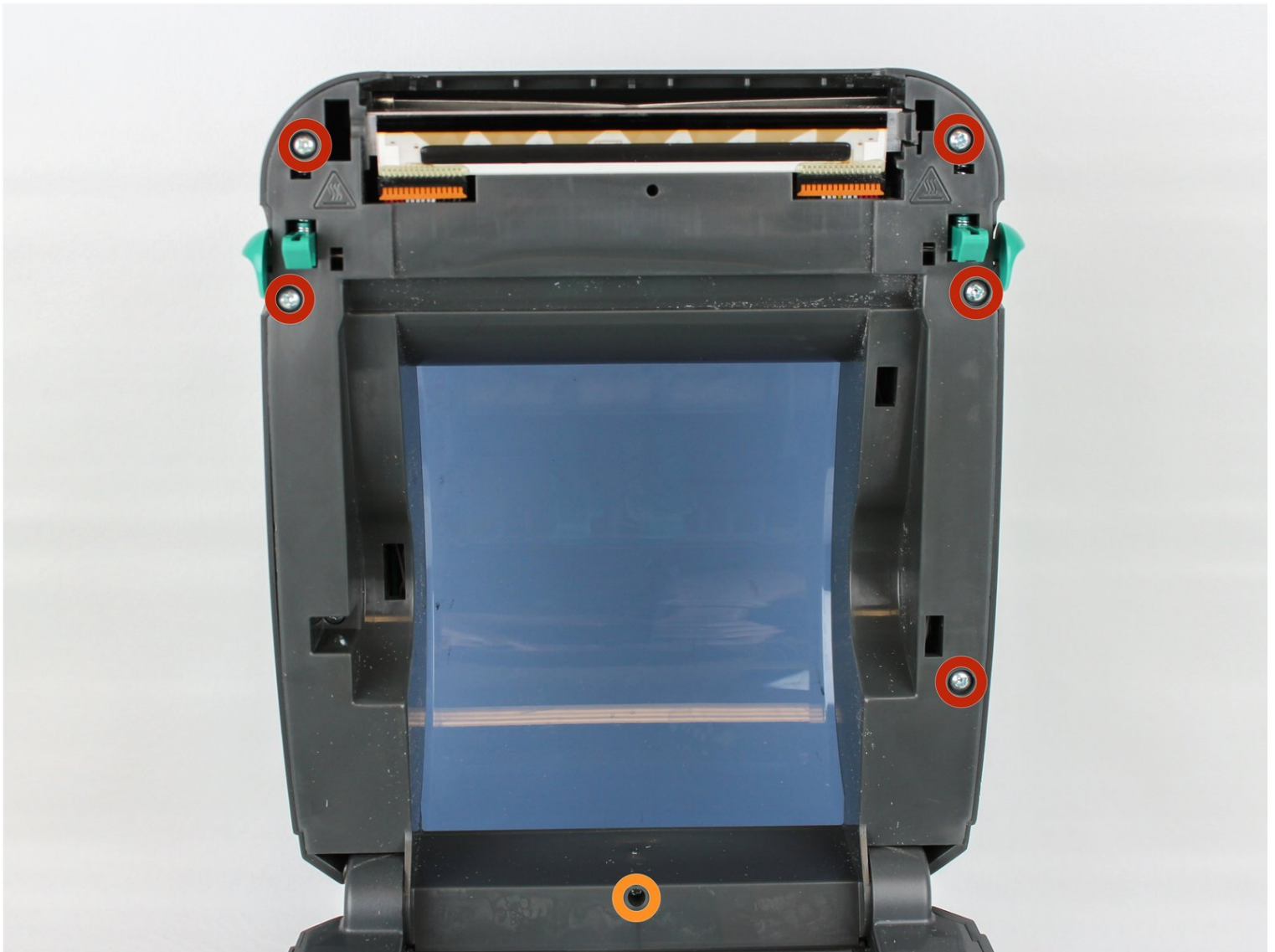




# Zebra ZP 450 Feed Key Replacement

This guide will walk you through removing the...

Written By: Keeland Roche



# INTRODUCTION

This guide will walk you through removing the underlying component of the feed key, or button, in order to replace it.

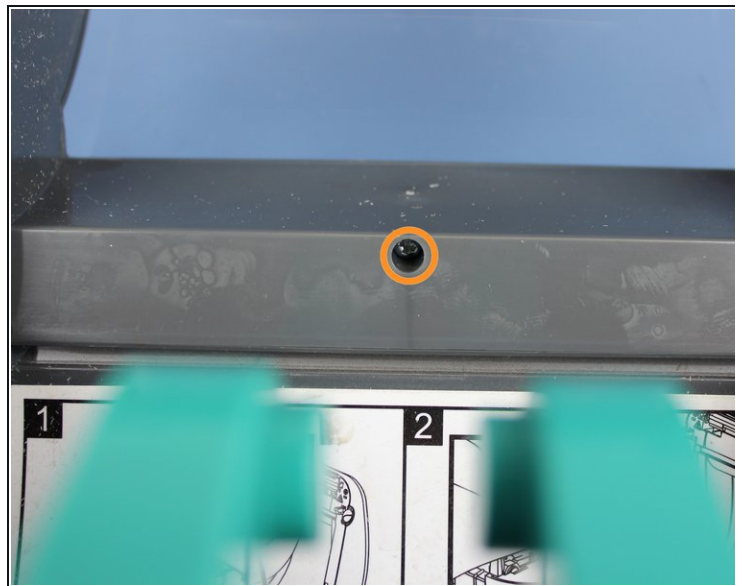
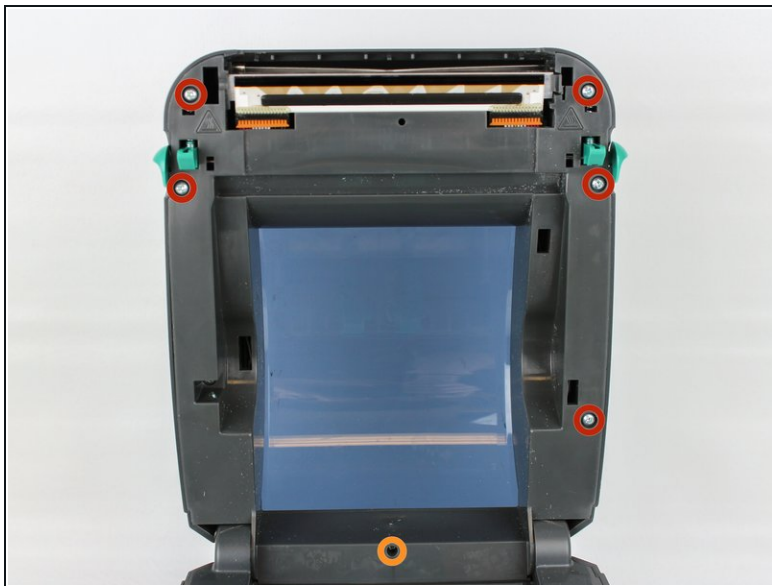
## TOOLS:

Phillips #1 Screwdriver (1)

## PARTS:

Zebra Feedkey (1)

### Step 1 — Open Lid and Unscrew Screws



 This device uses electricity, so it is best to unplug it before going any farther.

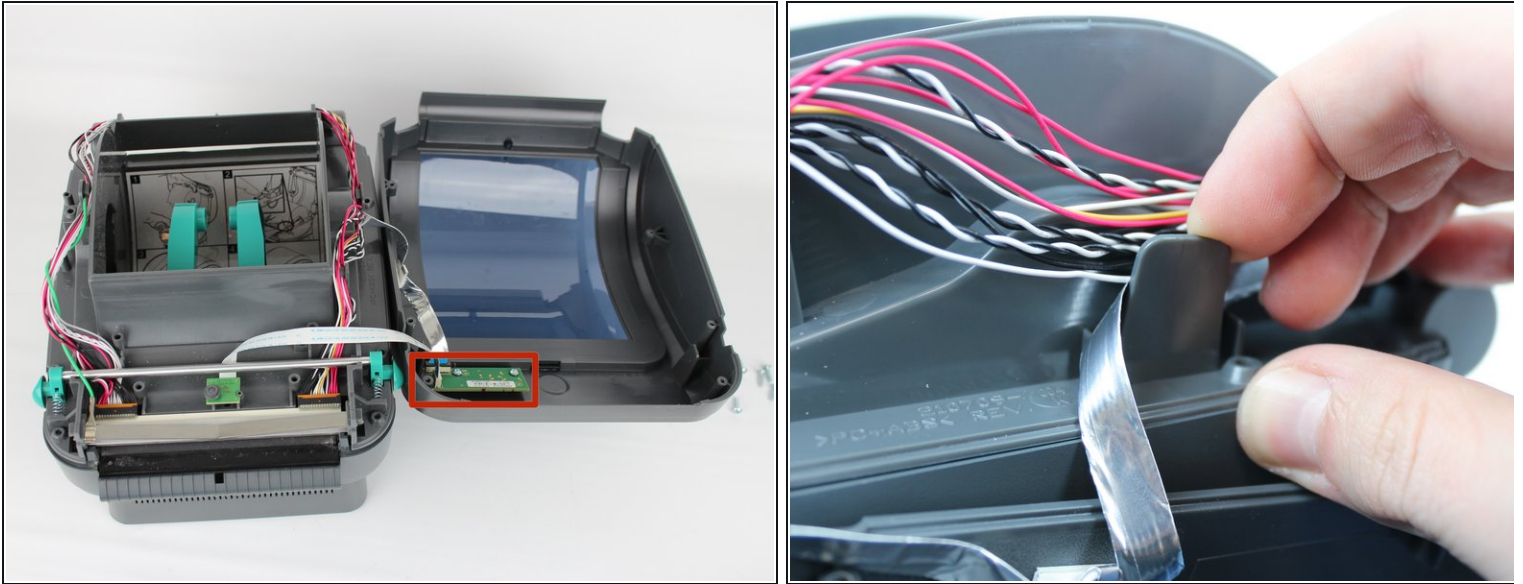
- Remove 5 11.08mm Phillips screws that will come out of the casing once loose.
- There is one Phillips screw at the bottom center set deep inside the casing - it is easy to get to with a thin screwdriver. This screw will come loose, but stay inside the casing. Don't be surprised when it won't drop out.

## Step 2 — Remove Top



- Position your hands one on either side of the top.
- Put your thumbs on the front and your 4 fingers on the sides.
- Push outwards with your 4 fingers to remove the plastic top.
- ① Wiggling the top may help loosen it from the bottom screw that is still in the case.

### Step 3 — Open Lid



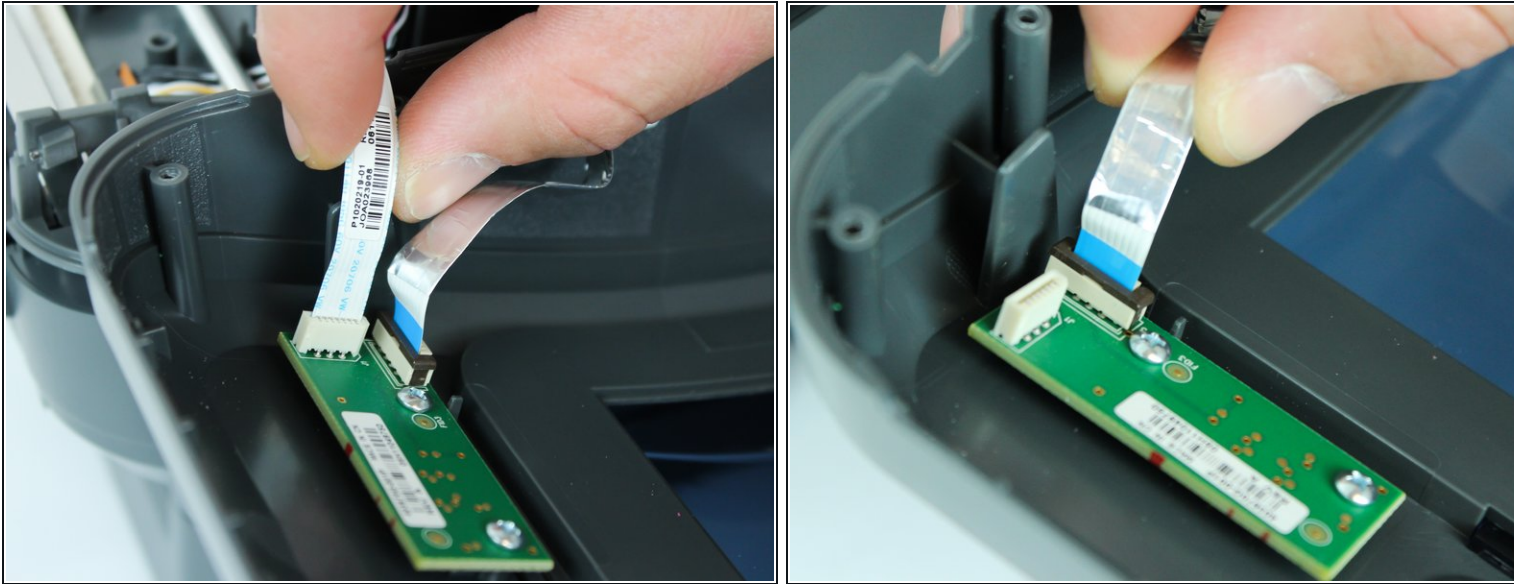
- Put the lid back down and lay the top open as shown in the photo.

⚠ Be careful setting the lid down, as it could pull wiring from other components. If you need more wiggle room, you can remove the silver cable from the support clip on the side, as seen in the second photo by pulling the tab back and pushing the cable up.

- The component we are replacing is on the underneath of the top of the device, highlighted in the photo



## Step 4 — Remove No-Fuss Ribbon Cable Connectors



- Starting with either ribbon cable, grip it on either side and gently pull out - The cable will come out of it's connector.
- Repeat for other ribbon cable

⚠ Ribbons may be fragile, so handle with care.

## Step 5 — Remove Circuit Board



- Remove 2 7.51mm Phillips screws holding the circuit board onto the device casing.

To reassemble your device, follow these instructions in reverse order.