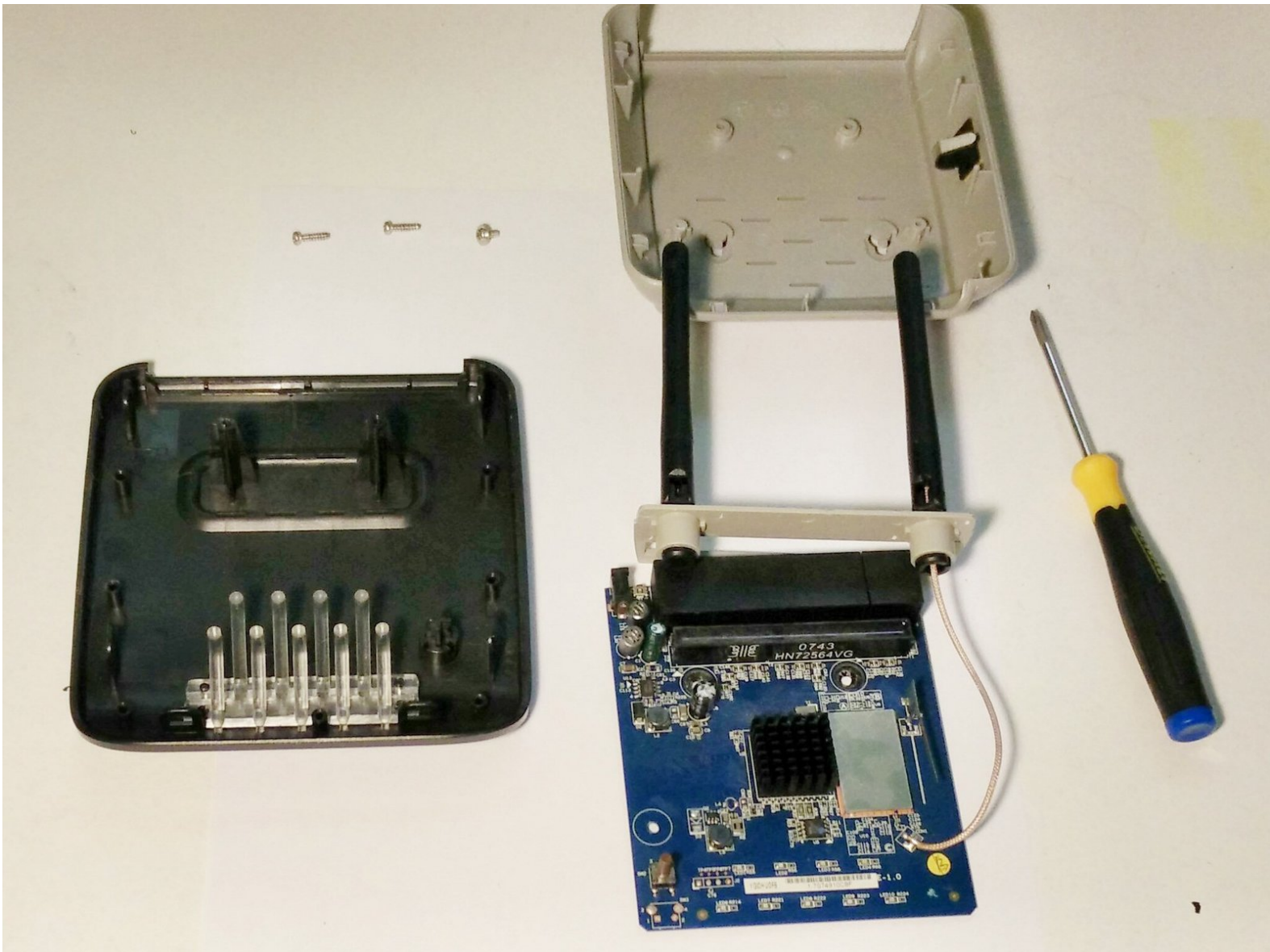




# Dynex DX-WEGRTR Motherboard Replacement

Use this guide in order to replace the motherboard of the DX-WEGRTR router.

Written By: Angel Leon



---

## INTRODUCTION

This guide will take you step by step on how to replace the motherboard of your DX-WEGRTR router. There are multiple reasons why you'd want to do this, including electrical damage due to a power surge, or a simple broken electrical component within it such a capacitor. Refer to the [troubleshooting page](#) to see other causes of possible motherboard malfunctioning.

---



### TOOLS:

- [Phillips #00 Screwdriver](#) (1)
  - [iFixit Opening Tools](#) (1)
-

## Step 1 — Unscrew top cover.




- Remove the two Phillips #00 screws in the bottom of the device securing the casing.
- Two 7.8 mm Phillips screws
- ⓘ Both of the screws are covered by the blue sticker, so they won't be visible instantly. Try feeling the plastic with your screwdriver until you find the hollow openings.

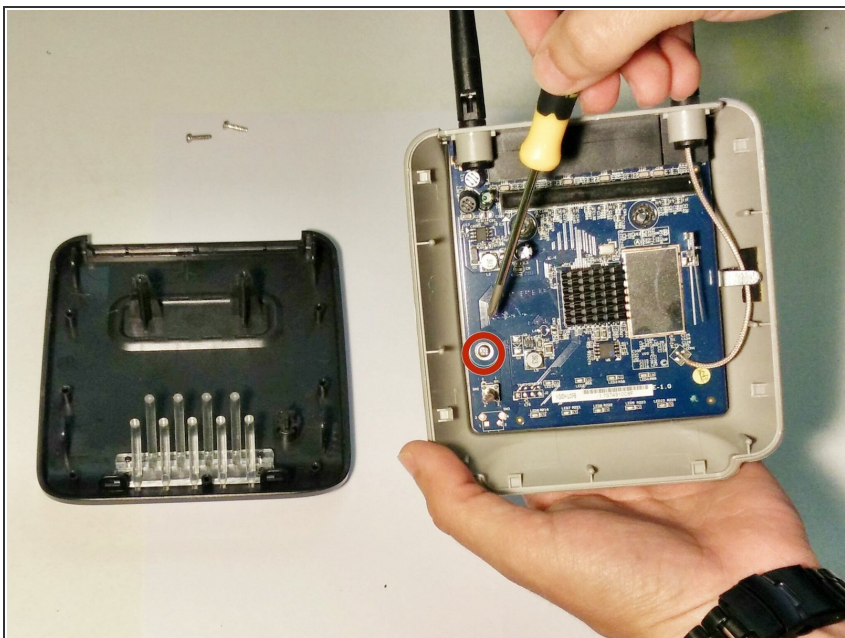
## Step 2 — Prying the top cover off.



- Gently pry the edge of the vessel with a plastic opening tool, the previously used screwdriver, or your hands. Move your tool around all the edges of the router until you get all four of the plastic holders.

 When prying off the front edge of the router, be careful to not insert your tool too deep into the device, for you may damage the LED connectors.

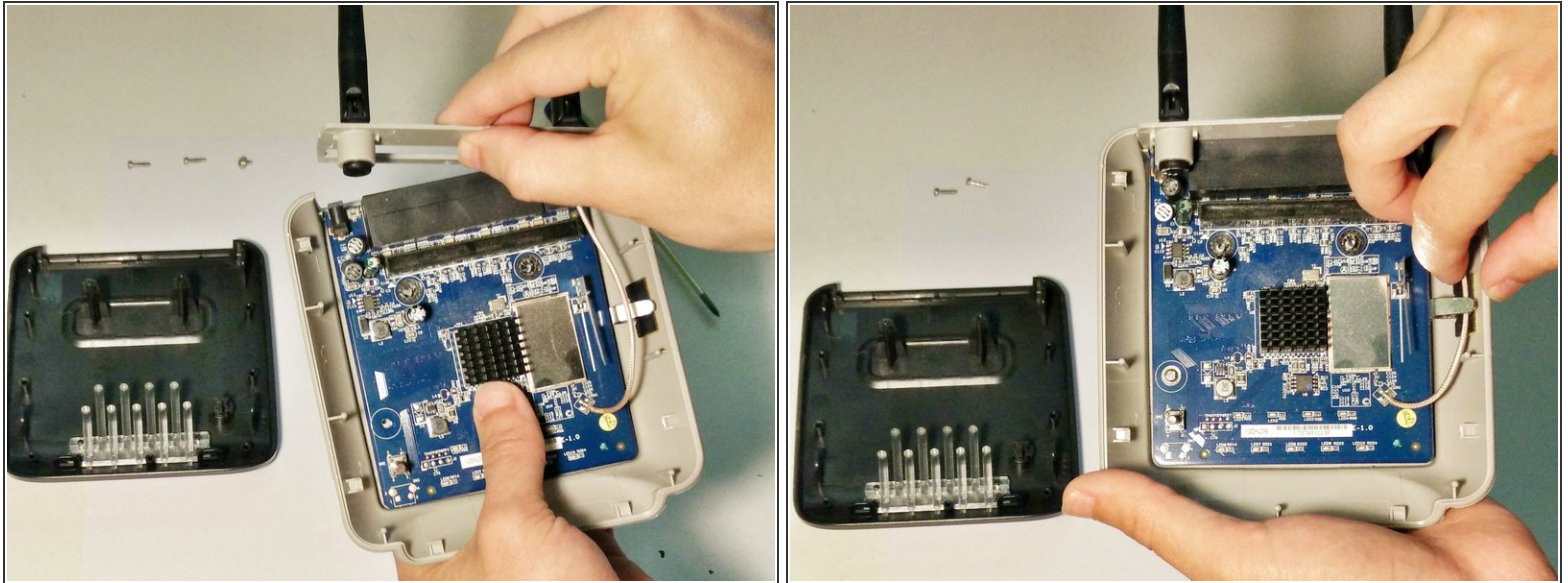
## Step 3 — Unscrew the motherboard out of place.




- Use your handy Phillips screwdriver to unscrew the Phillips #00 screw to the lower left side of the motherboard.
- One 4.4 mm Phillips #00 screw.

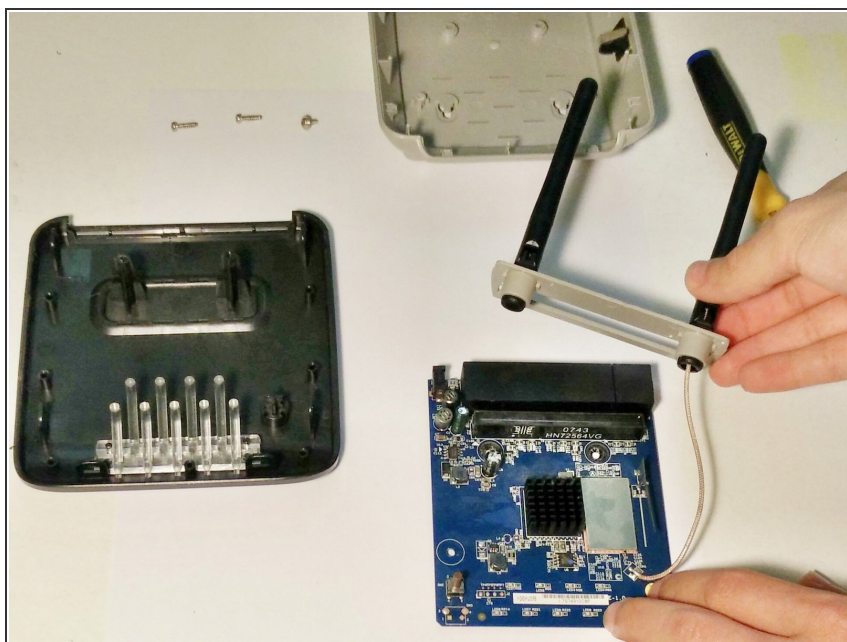


## Step 4 — Slide antennas out.



- Carefully slide the plastic housing of the antennas (the back cover of the router) up and out of its slot.
  - You may need to move the motherboard at this time in order to jiggle the antenna's housing off.
-  Be sure to remove the cable connecting the motherboard and the antenna from its holding compartment at the right edge of the router (See image two). Pulling on either the motherboard or the antenna's housing while the cable is still secured may damage either or both components.

## Step 5 — Take the motherboard out of its place.



- Finally, remove the motherboard from its place making sure to not pull the cable connecting the antennas.

To reassemble your device, follow these instructions in reverse order.