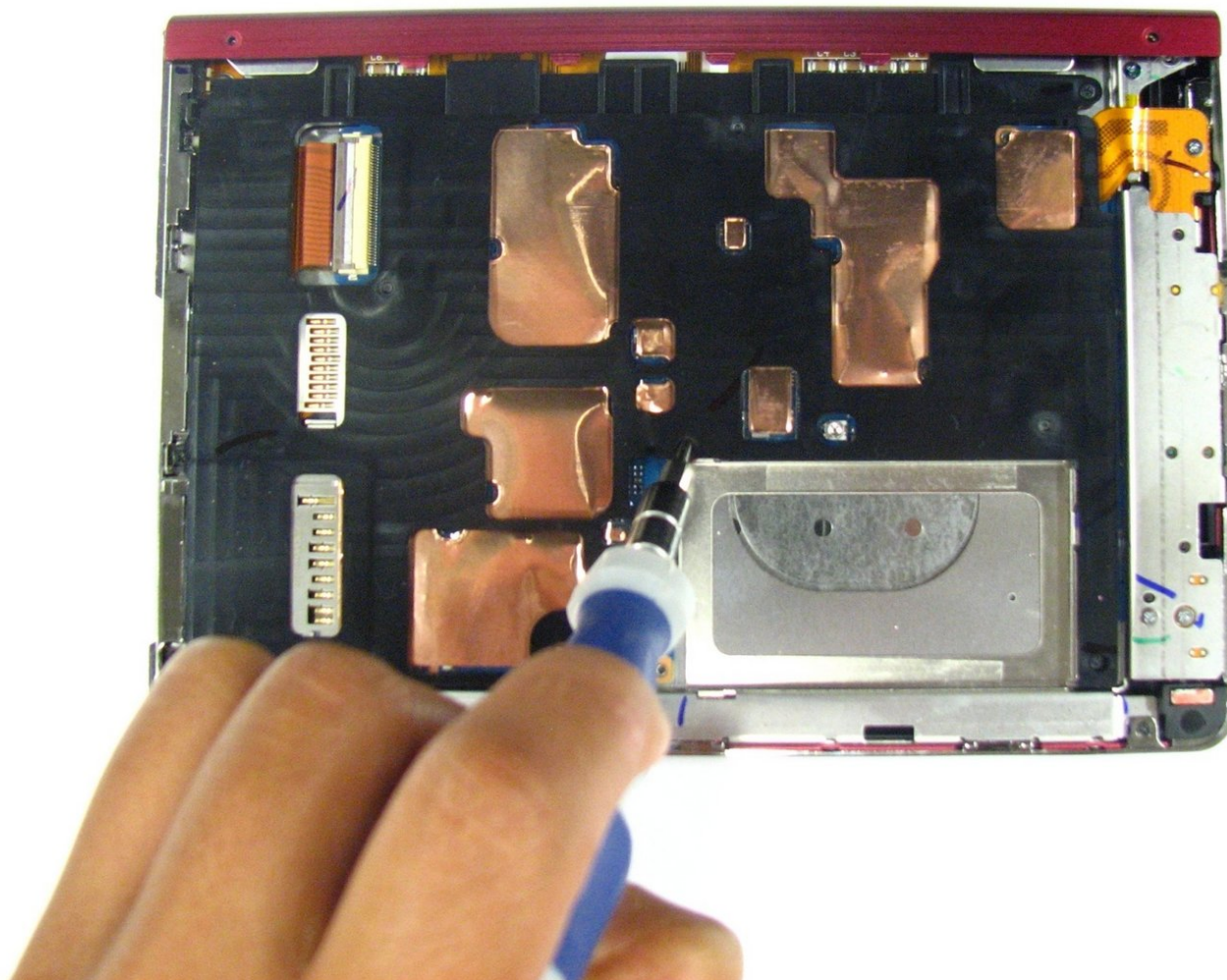




# Disassembling Sony Reader Touch Edition PRS-600 Inner Casing

The guide will show you how to remove the inner casing of the device.

Written By: Terrika Ngobili





## TOOLS:

- [Phillips #000 Screwdriver](#) (1)
  - [Spudger](#) (1)
-

## Step 1 — Back Panel



- Using the Phillips head screwdriver PH000, remove the two 1.4 mm screws that are located on the backside of the device.

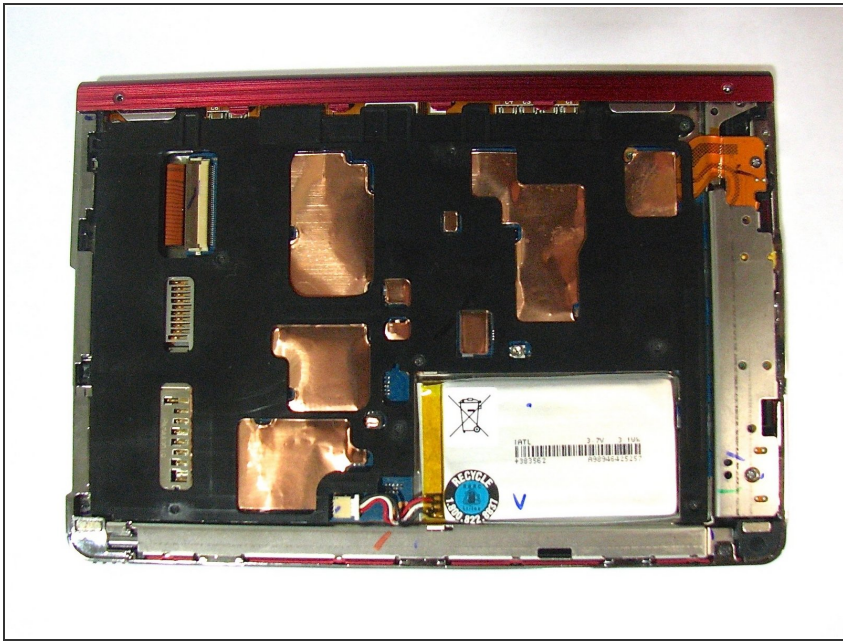
## Step 2



- Slide the back cover off by pushing it to the left, away from the side that held the screws.
- Remove the cover.

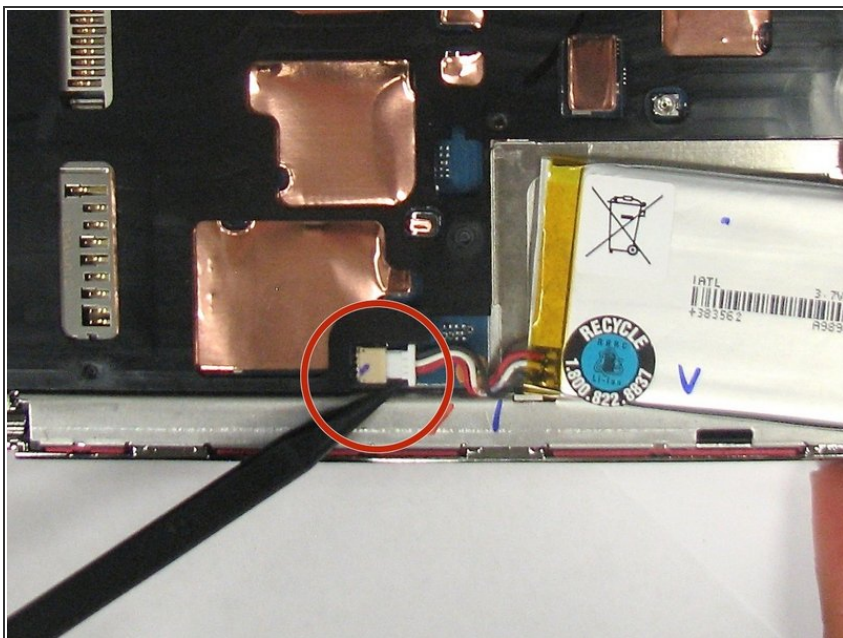


## Step 3



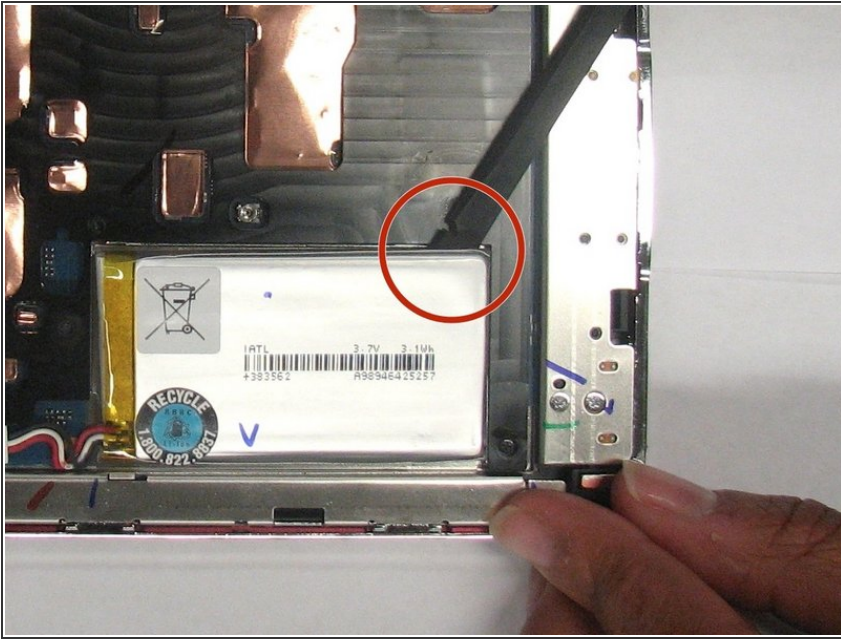
- This is what the device should look like once the back cover panel has been removed.

## Step 4 — Battery



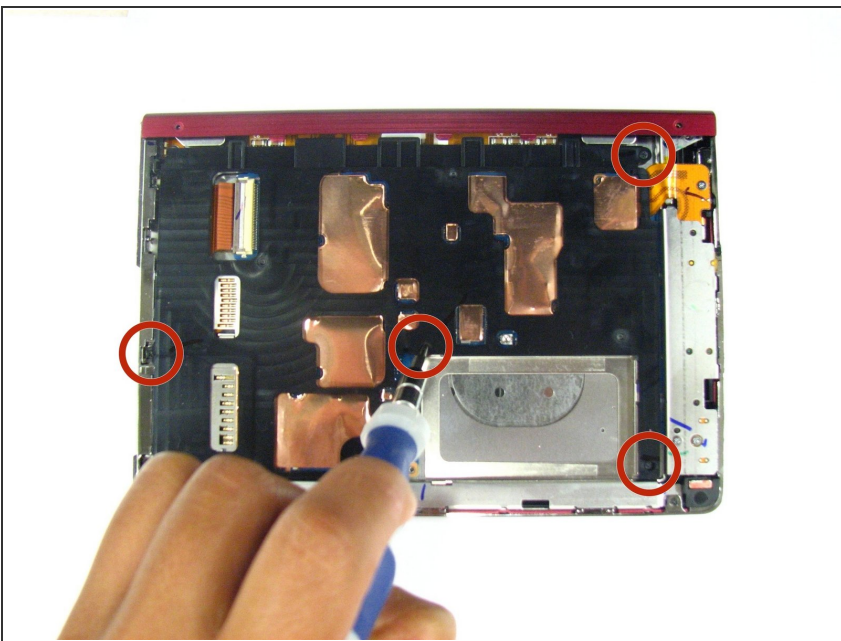
- Once the back cover has been removed locate the battery in the bottom right corner of the device.
- Using the pointed end of the spudger, push out the white plug that is connected to the battery from its beige base.

## Step 5



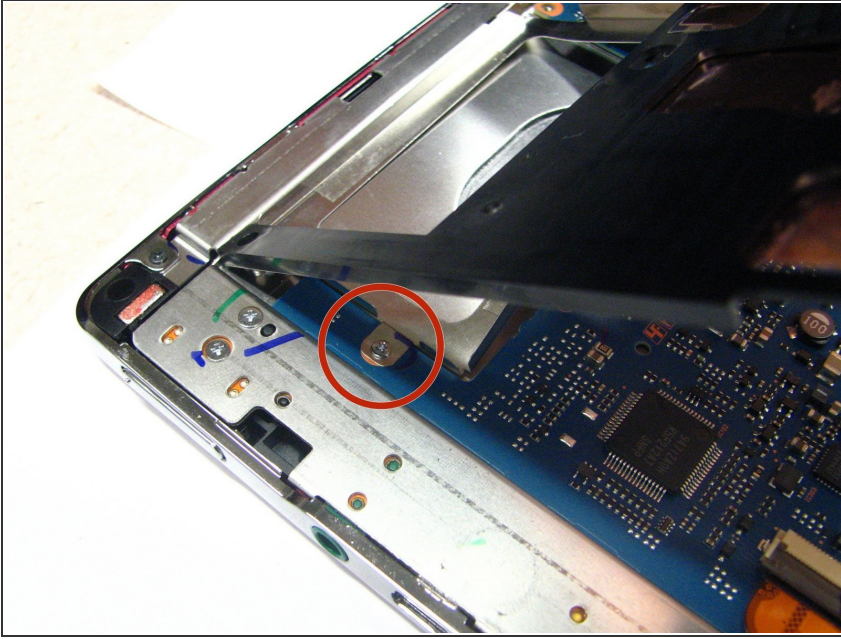
- Use the flat end of the spudger to pry the battery out of its holder. There may be glue holding it in place.

## Step 6 — Inner Casing



- Using a screwdriver remove the four 1.4 mm screws that are holding the black plastic casing in place.

## Step 7



- Pry open the black casing to access the screw that is holding down the battery holder.
  - Remove the one 1.4 mm screw that is holding down the battery holder located under black casing.
  - Lift the black inner casing and the battery holder out of the device.
- ⚠ The battery holder and the black inner casing are connected by a thin strip of copper. There may be glue holding the black inner casing in place.

To reassemble your device, follow these instructions in reverse order.