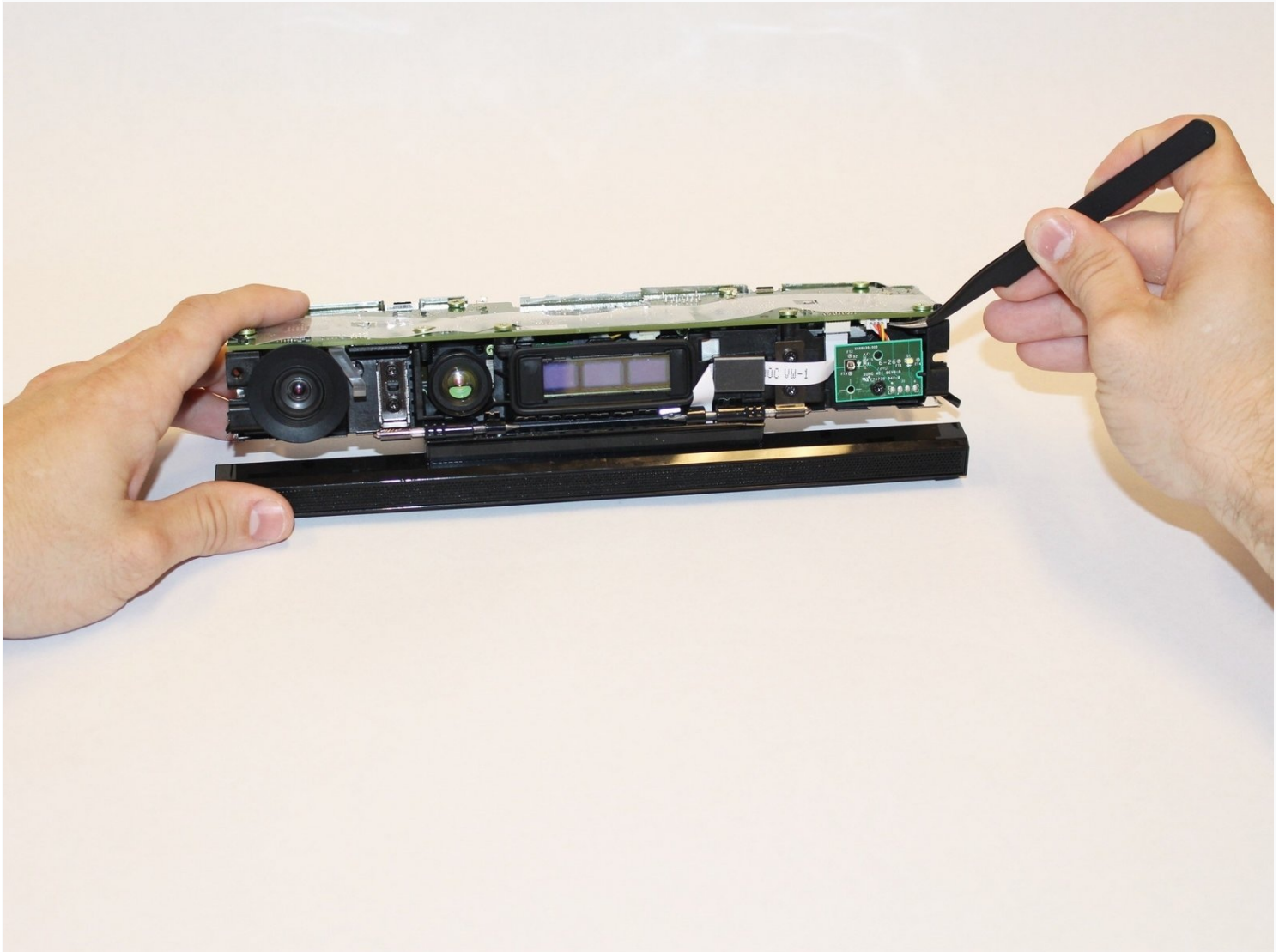




Xbox One Kinect LED Sensor Replacement

The LED sensor lights up when the sensor is...

Written By: Malak Anshassi



INTRODUCTION

The LED sensor lights up when the sensor is connected. If the LED is unlit, the sensor module itself may be at fault.

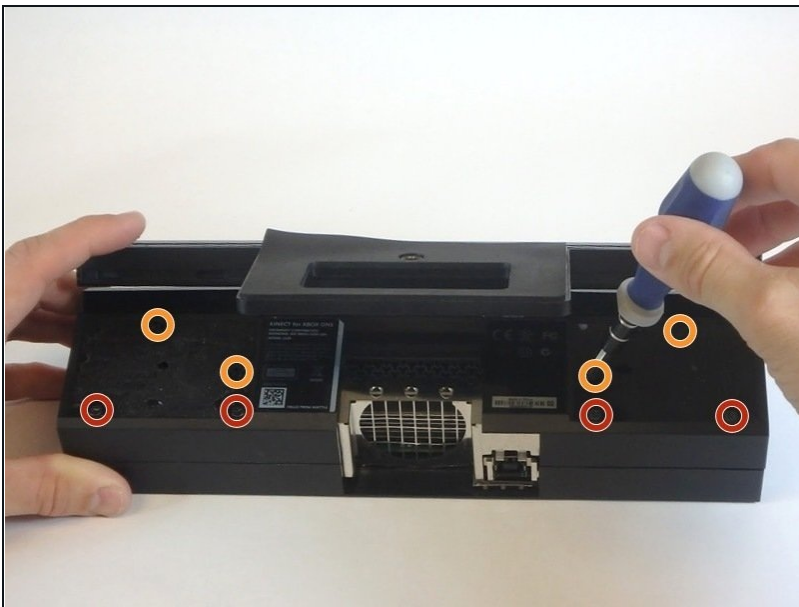
TOOLS:

TR9 Torx Security Screwdriver (1)

Spudger (1)

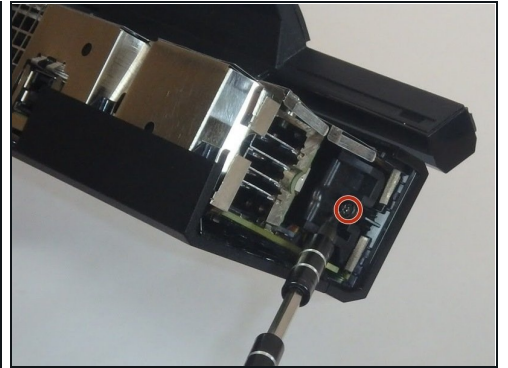
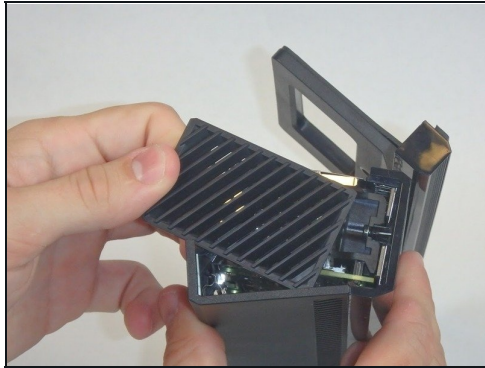
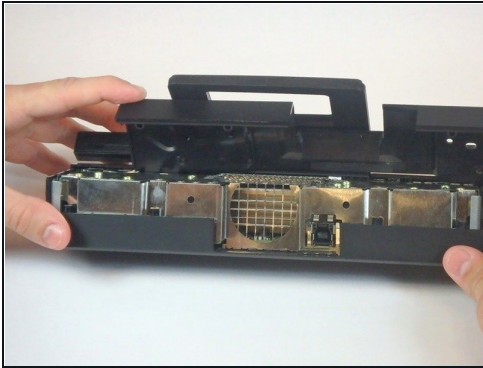
Tweezers (1)

Step 1 — Outer Shell



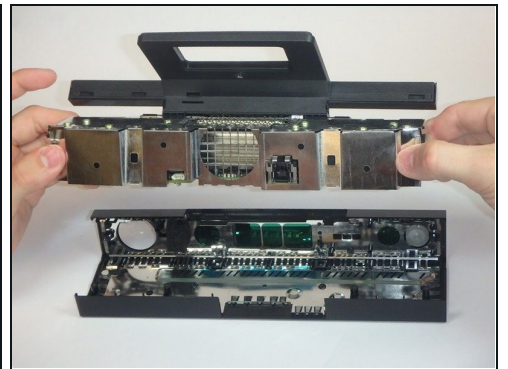
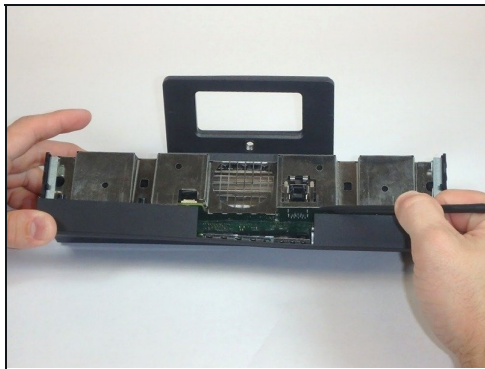
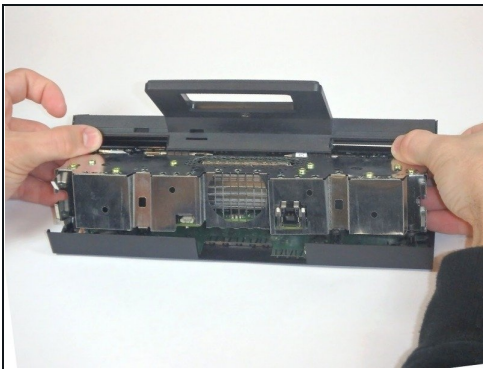
- Remove the sticker on the underside of the device.
- Remove the four 3.1x23.5 mm T10 screws underneath the sticker.
- While you're at it, remove the four 3.1x7.5 mm T10 screws beneath the sticker. Make note of the sizes and locations of the screws.

Step 2



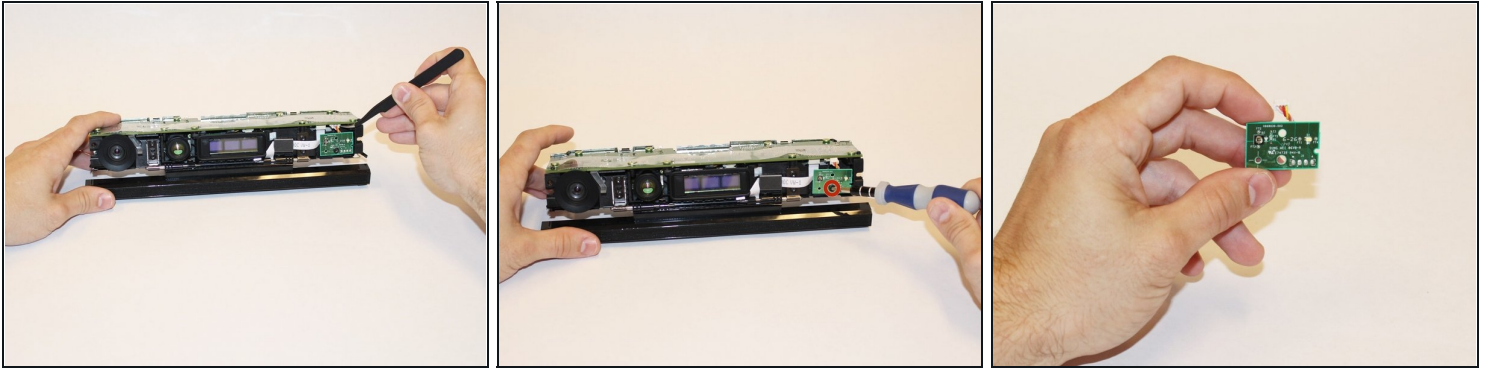
- Remove the back panel.
- Remove the black panels on either side of the Kinect, and remove the 3.1x7.5mm T10 screws underneath them.

Step 3



- Using your thumbs, press firmly against the outer case on either side of the stand. This will disengage the internal assembly.
- Lift the internal assembly with the spudger.
- Remove the assembly from the case. You now have access to the inner shell of the Kinect, along with the heat sink, microphone, and LED sensor.

Step 4 — Removing the LED Sensor



- Disconnect the ribbon cable between the sensor driver board and the motherboard.
- Remove the 3.0x7.5 mm T9 screw holding the sensor driver board to the heat sink.
- Remove the infrared sensor board for the Kinect.

To reassemble your device, follow these instructions in reverse order.