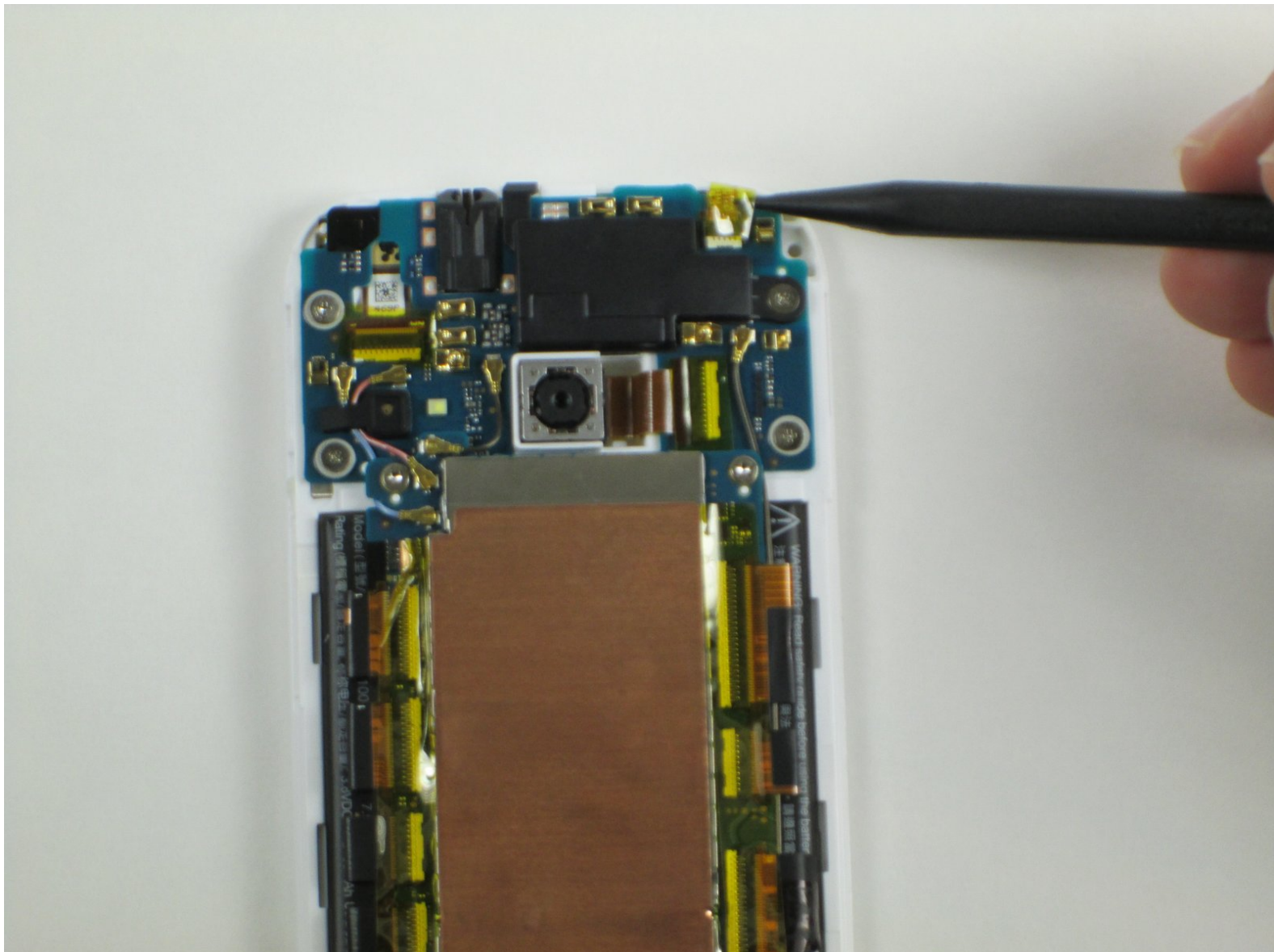




HTC One Mini 2 Power and Volume Buttons Replacement

Use this guide to replace the power and volume buttons on your HTC One Mini 2.

Written By: Victoria Engle



INTRODUCTION

This guide is to help you get into your device to replace the power and volume buttons. This is for replacing the actual component, not the outer plastic pieces.



TOOLS:

- [Metal Spudger](#) (1)
 - [64 Bit Driver Kit](#) (1)
 - [Spudger](#) (1)
 - [iFixit Opening Tools](#) (1)
 - [Paper Clip](#) (1)
 - [iOpener](#) (1)
 - [Magnetic Project Mat](#) (1)
-

Step 1 — Sim and MicroSD Card



- Insert the end of a paper clip into the holes on each side of the phone to eject the SIM card and Micro SD card.
- Set the cardholders aside.

Step 2



- Heat up the top grey speaker plate with the iFixit iOpener for two minutes.

Step 3 — Front Plate



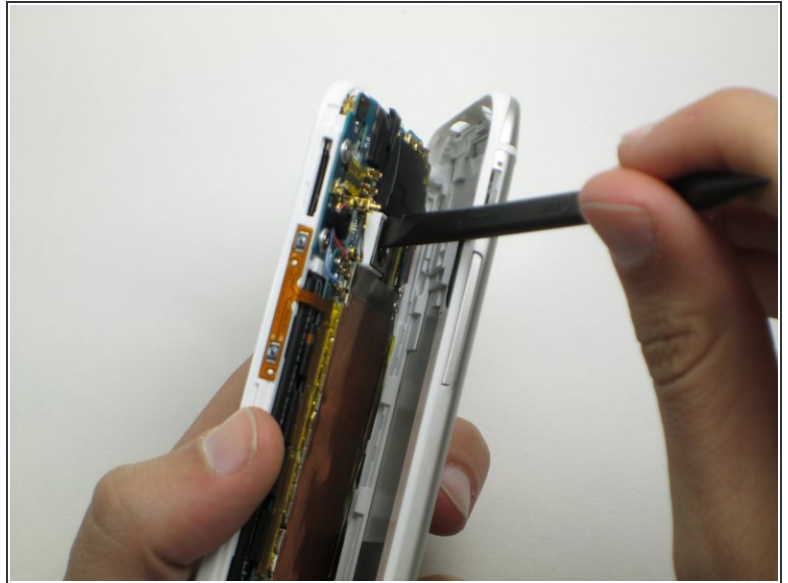
- Use a metal spudger to pry up the left edge of the upper grey front plate.
- ⓘ Place the spudger between the inside white plastic edge and the grey plate. Do not pry between the two white plastic frames.
- ⚠ Don't pry against the glass. Pry against only the left side as there is a delicate antenna under the plate.
- Use the narrow plastic pry tool to carefully separate the black ribbon antenna from the grey plate.

Step 4



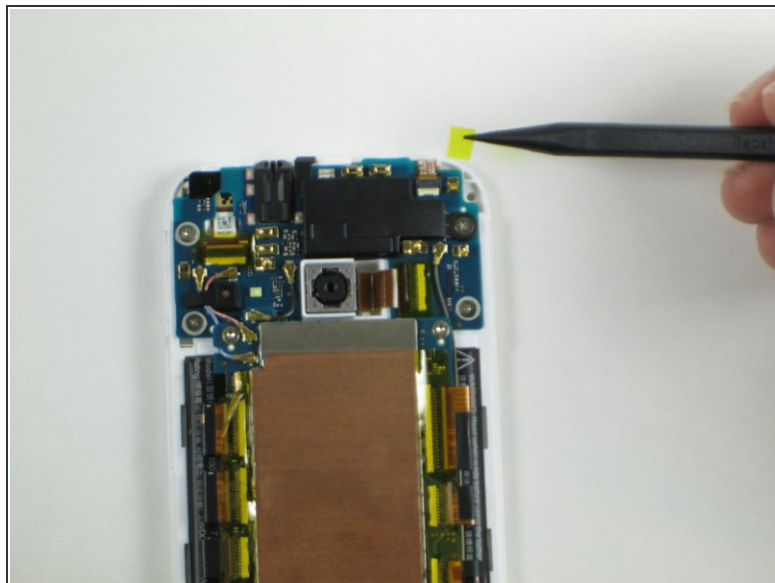
- Remove the 2mm screw with a T5 torx screwdriver head from the iFixit tool kit.

Step 5



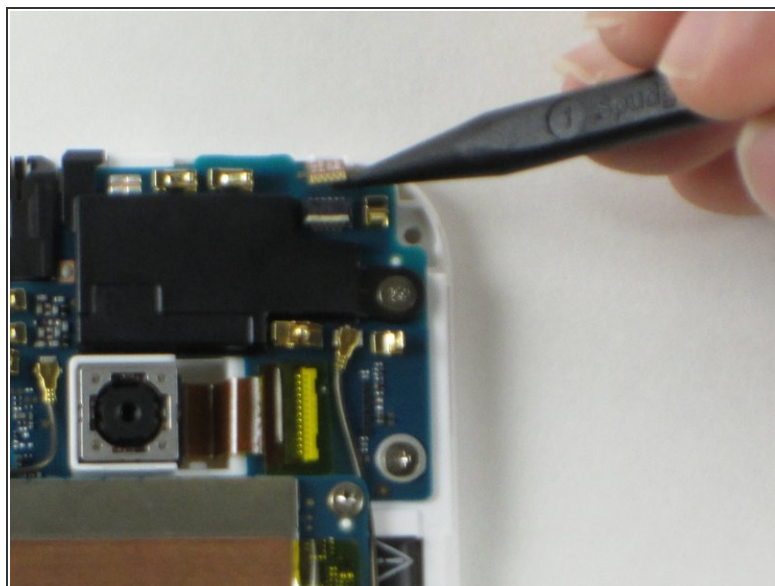
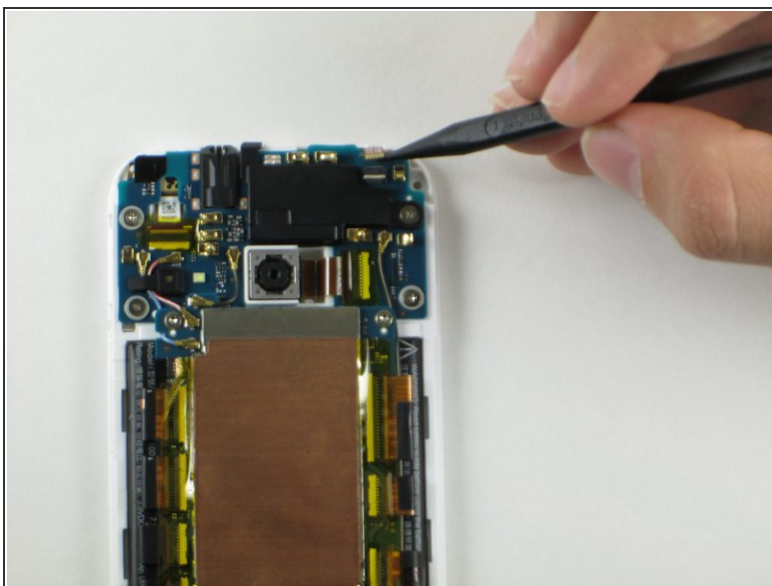
- Use the plastic pry tool to pry around the edge of the phone.
 - ⚠ Pry carefully around the card slots.
- Slowly pull up from the right side of the screen like opening a book.
 - ⚠ The plastic piece for the power button may fall out. Set it aside for reassembly.
- Use the plastic spudger to peel the foam adhesive around the camera away from the back plate.

Step 6 — Power and Volume Buttons



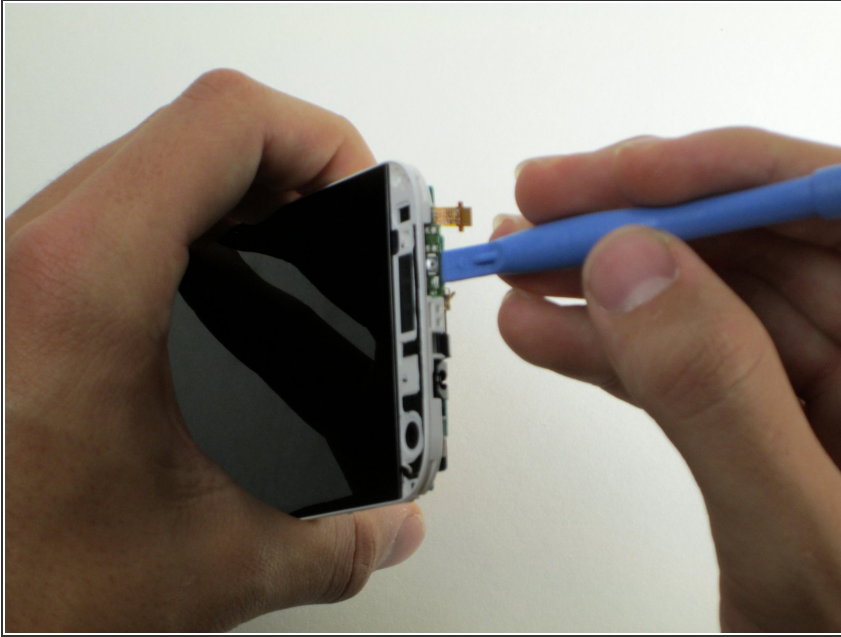
- Use the pointed end of a spudger to peel the yellow tape off of the power button connector.

Step 7



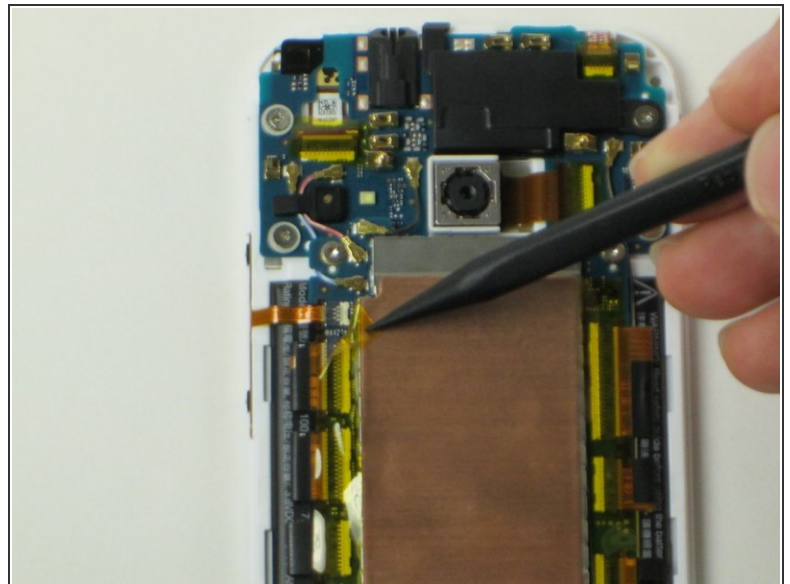
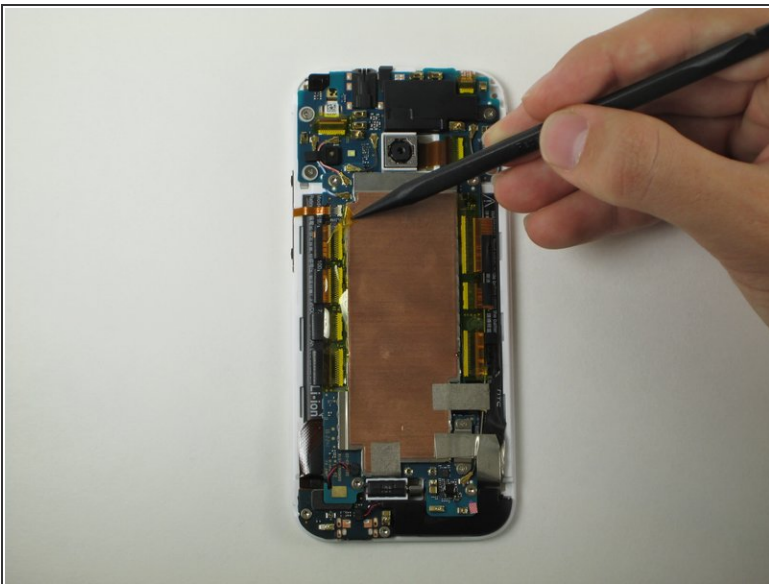
- Using the pointed end of the spudger, pop up the small white tab on the power button connector.
- Gently pull the ribbon cable out of the connector.

Step 8



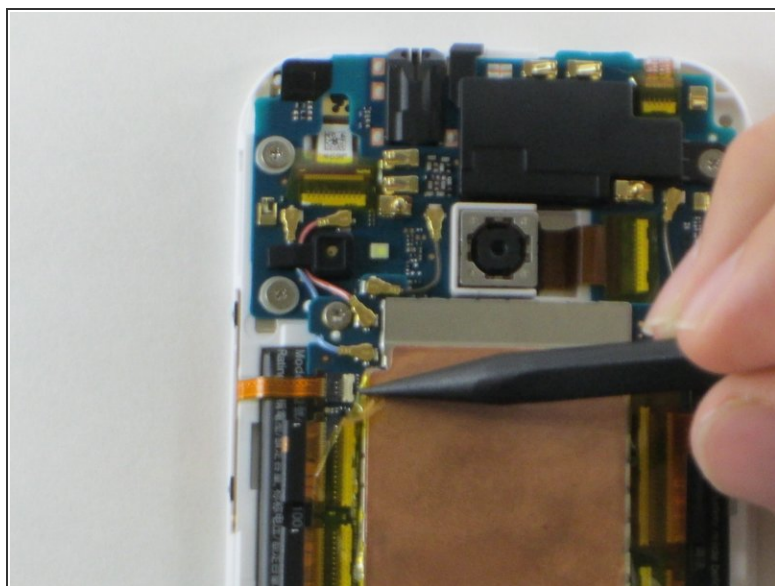
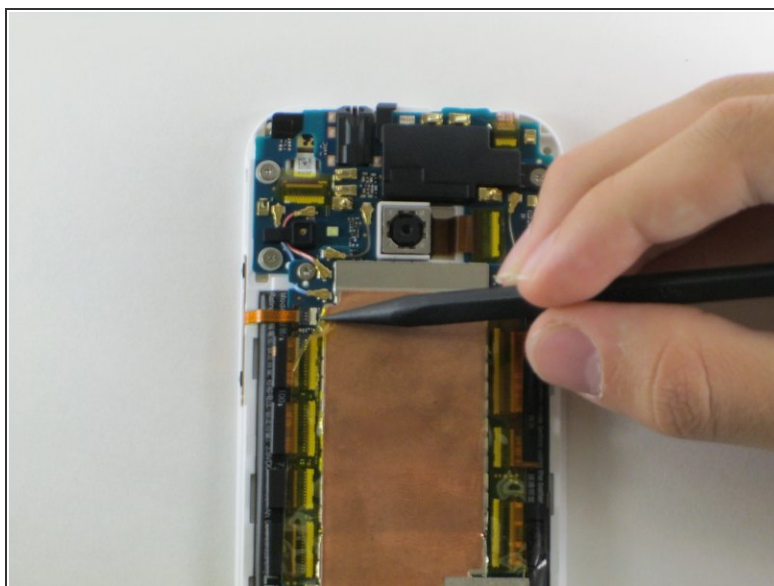
- Use a plastic opening tool to pry under the green mini circuit board to peel off the power button.
- ⓘ There is light adhesive holding the button on. This should be relatively easy to take off.

Step 9



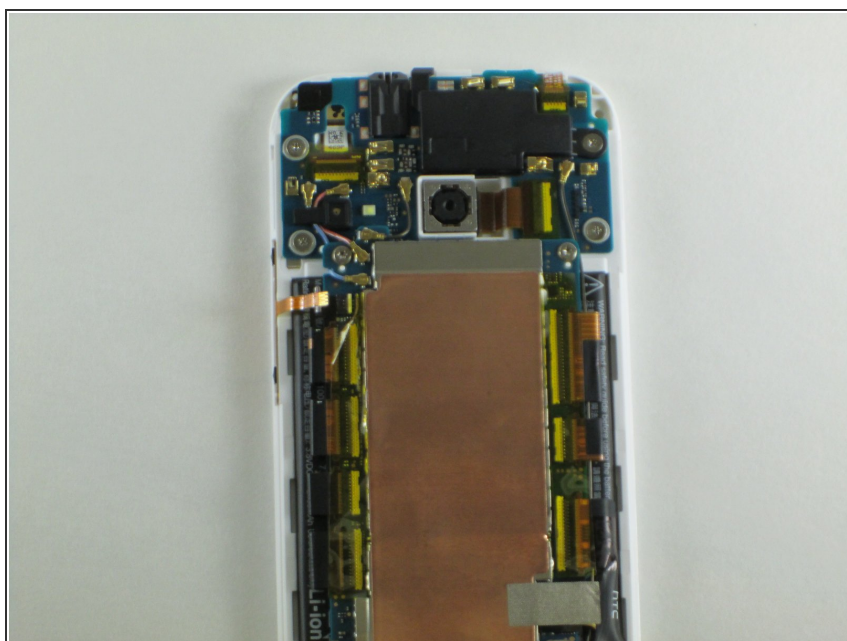
- Use the pointed end of a spudger to peel off the yellow tape from the volume button connector.
- ⓘ The connector is found at the top left corner of the copper plate.

Step 10



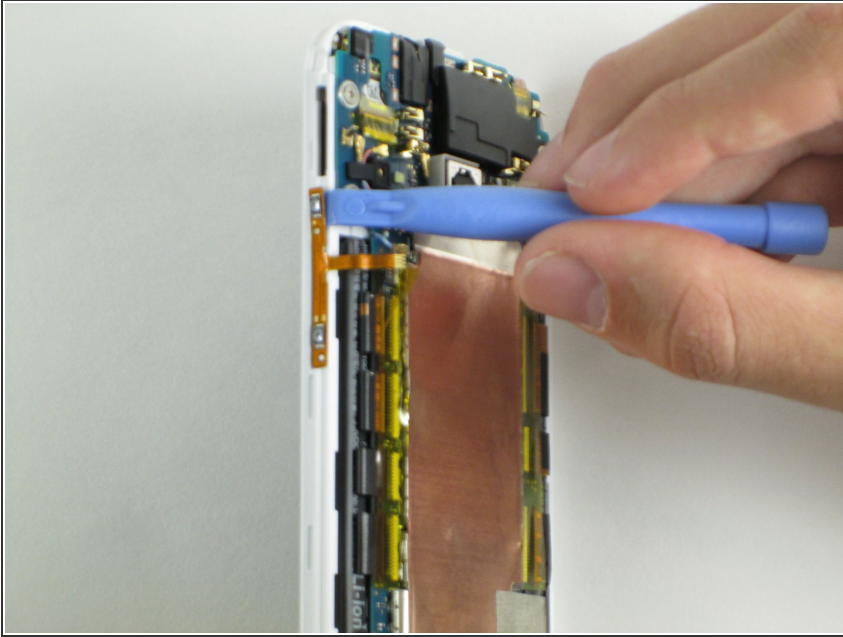
- Use the pointed end of the spudger to pop up the white tab to the left.

Step 11



- Gently pull the ribbon cable for the volume buttons out of the connector.

Step 12



- Use a plastic opening tool to peel off the volume buttons.
- ⓘ The buttons are held on with light adhesive. No heavy prying needed here.

To reassemble your device, follow these instructions in reverse order.