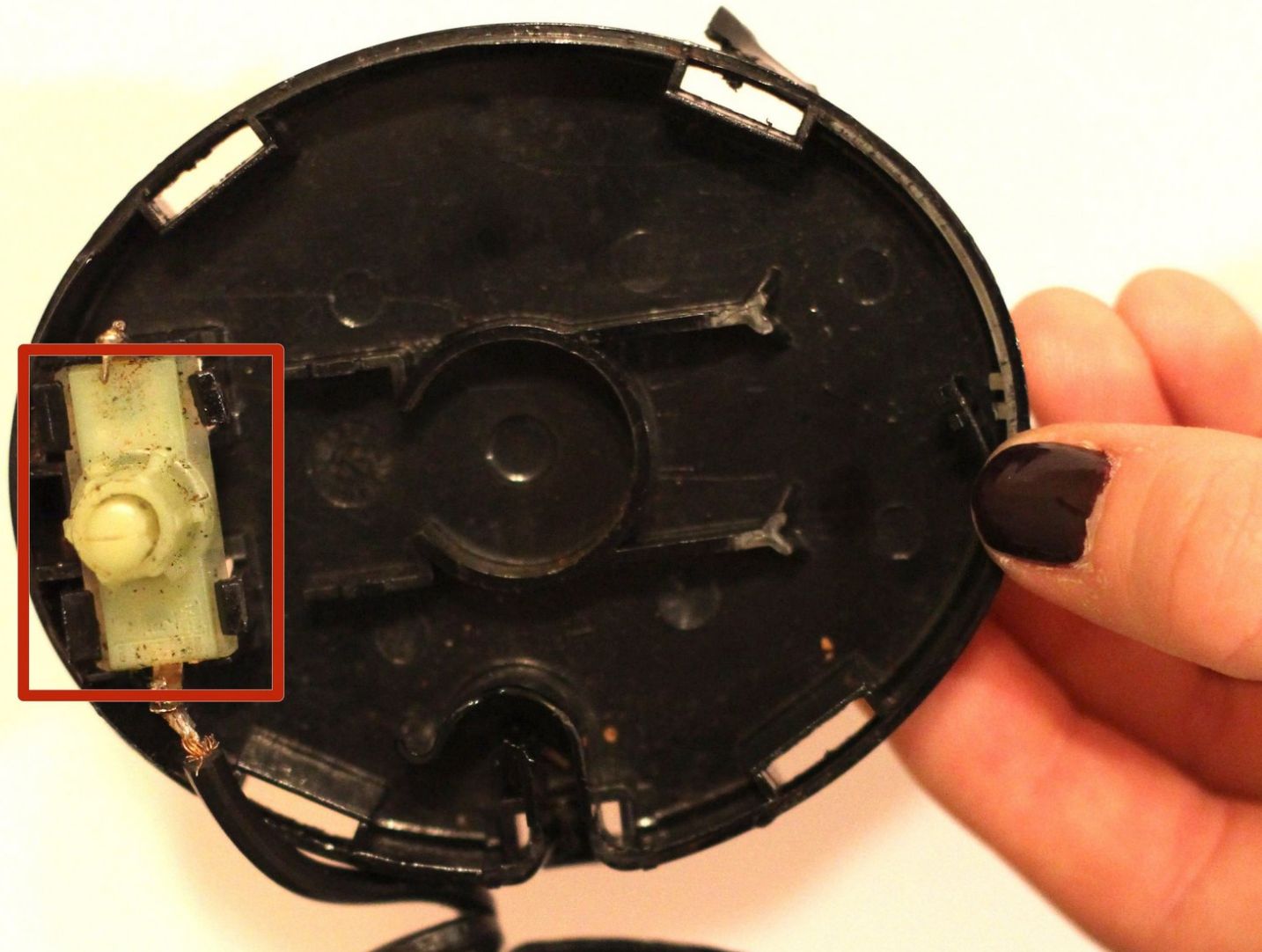




Krups F203 Coffee Grinder Plug/Cord Replacement

Sometimes, the plug or cord attached to the...

Written By: Ian Hancock



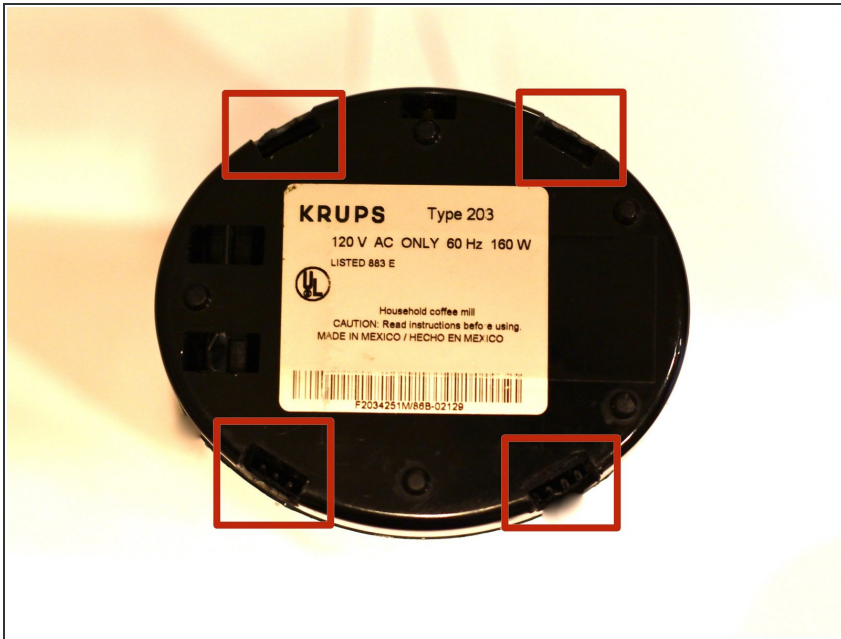
INTRODUCTION

Sometimes, the plug or cord attached to the Krups F203 coffee grinder is defective. This guide will tell you how to replace the cord.

TOOLS:

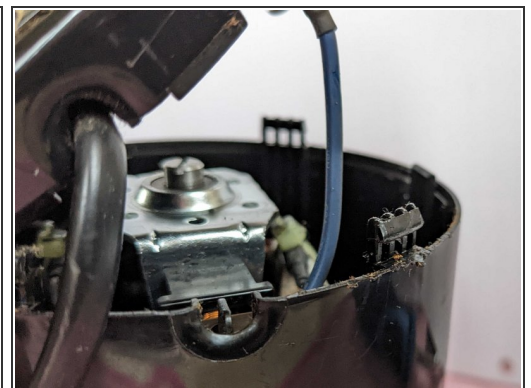
- [Spudger](#) (1)
 - [Soldering Workstation](#) (1)
-

Step 1 — Base Plate



- In each of the four rectangular slots on the bottom of the device, there is an E-shaped clip.

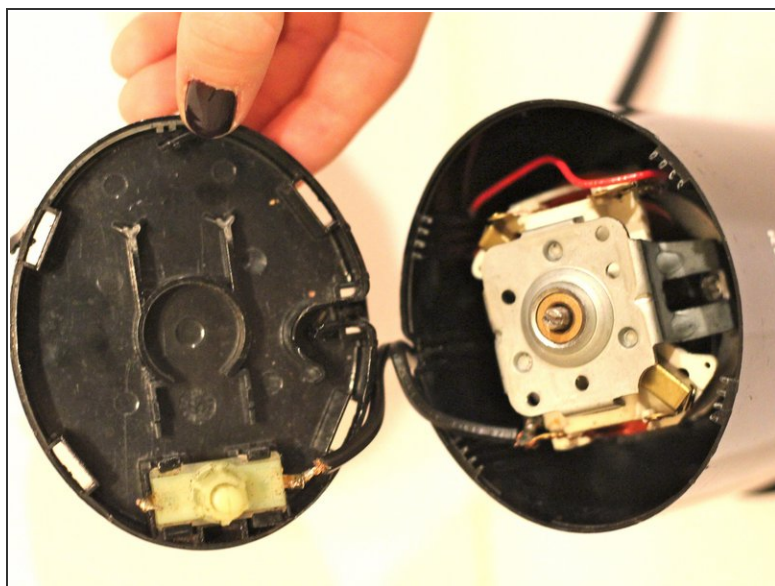
Step 2



- Wedge the spudger between the flat side of the E-clip and the outside wall of the slot. Then, loosen up the clip by prying it inward with the spudger.

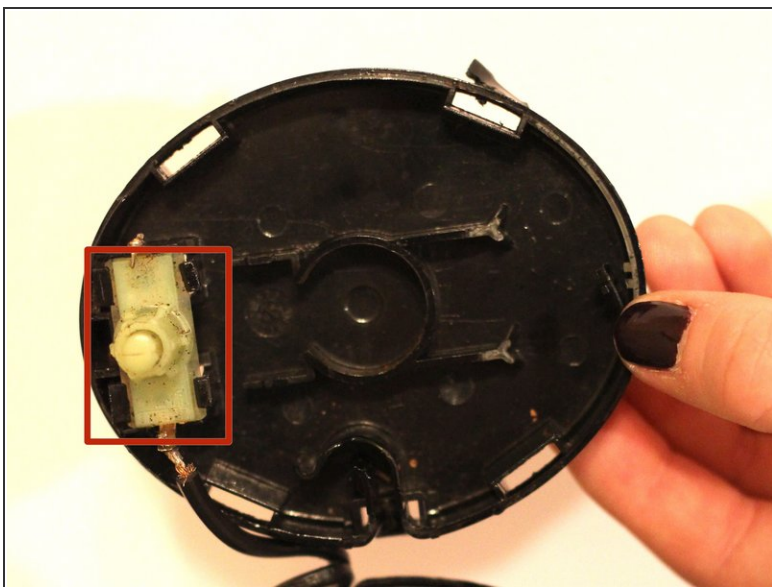
⚠ Try not to break these clips as this will cause structural integrity issues upon reassembly

Step 3



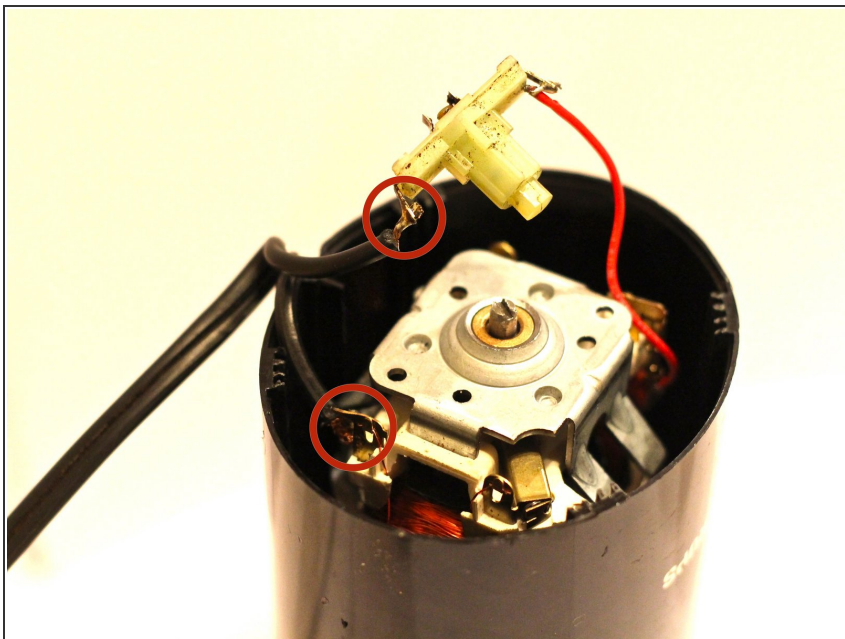
- Work your way around the four clips, loosening each a little at a time. Eventually, all four clips will be loose enough to remove the base plate.

Step 4 — Detach Trigger Button from Base Plate



- The trigger button is held in with light tension clips. Gently pry them back to release.

Step 5 — Remove the wire from two contact points



- Use the soldering iron to remove the existing solder.
- ⓘ Be sure to reference the how to solder video posted on the device page.

To reassemble your device, follow these instructions in reverse order.