



Memorex 2Xtreme MP3830-01 Function Buttons Replacement

Replacing various function buttons on the device in the event that one or more of the buttons cease to work.

Written By: Meghan



INTRODUCTION

The device's function buttons are needed to access and control the various functions of the device.



TOOLS:

- [Portable Soldering Iron](#) (1)
 - [Phillips #1 Screwdriver](#) (1)
-

Step 1 — Remove Bottom Shell



i Before disassembly, ensure that the boombox is powered off, unplugged and any batteries have been removed from the device.

- Begin by turning the boombox over so that the bottom is facing up.

! When turning the boombox over, the antenna will be pointing down. Take care that the antenna is not damaged when opening the device.

- Your boombox will have a total of 12 Phillips screws on the bottom. The location of the screws needed to remove the bottom panel are circled in red in the image to the left.

- Remove the 12 screws with a Phillips head screwdriver on the bottom panel.

★ One screw, in the upper left corner, does not need to be removed to disassemble the device. This screw is for the antenna.

Step 2

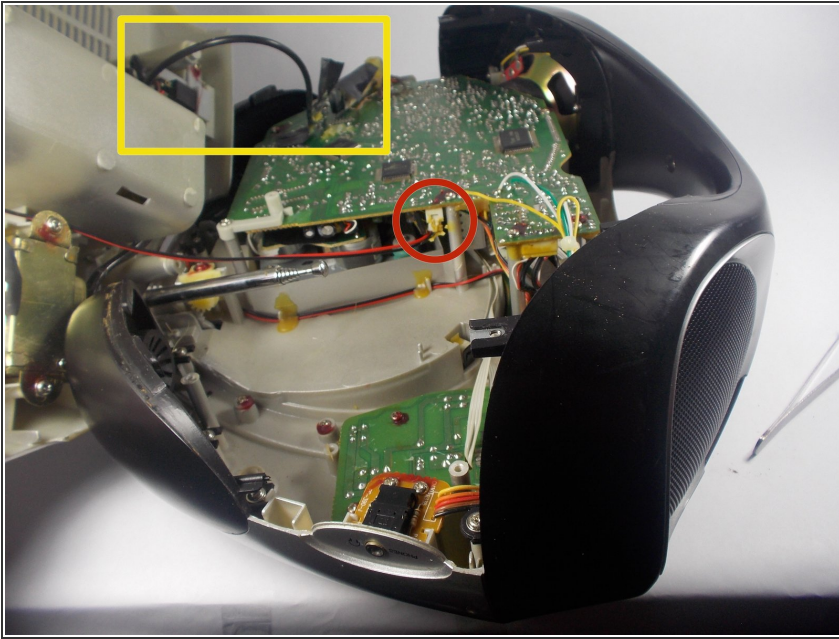


- With all 12 screws removed, it is possible to detach the plastic bottom cover from the top half of the boombox.
- Push the bottom shell back slightly before pulling it up. The plastic bottom will lift up directly but there is a lip that fits under the black handle that must first be exposed, as seen in the image on the left.

★ The boombox's antenna must be straight in order for the bottom cover to be pulled up.

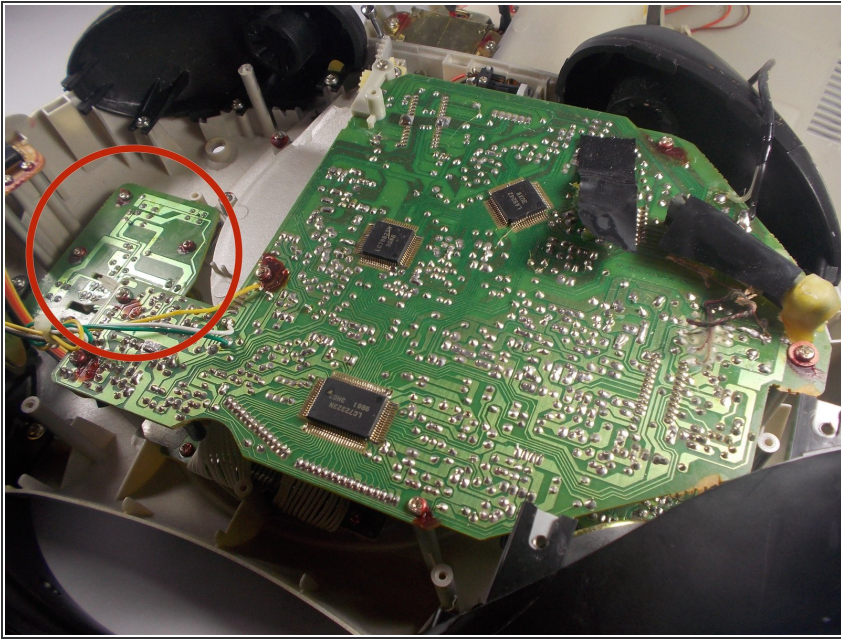
⚠ Several wires run between the bottom half and top half of the boombox. Take care not to damage or otherwise tear the wiring when opening the device.

Step 3



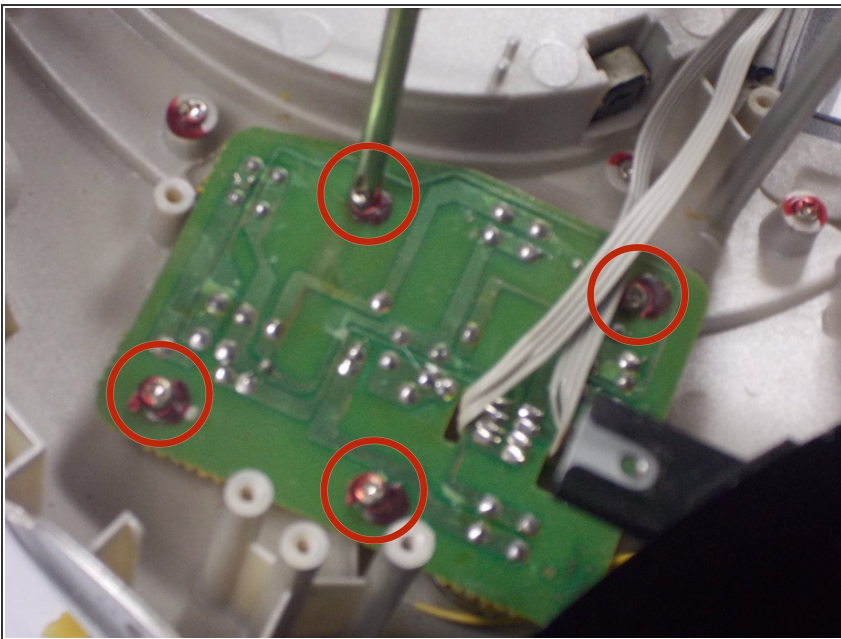
- The boombox should now be in two separate pieces, connected only by two wires.
 - Disconnect the red and black wires by gently grasping its white plastic end and pulling it out of its socket (circled in red on the image to the left).
 - Additionally, the black wire highlighted in the square yellow box in the image to the left is taped onto the main board. This tape may be safely removed to give the wire more slack when separating the two halves of the boombox.
- i** The power supply and antenna are located on the bottom half of the boombox while the headphone jack, function buttons and lcd screen are located on the top half.

Step 4 — Locating the Circuit Board



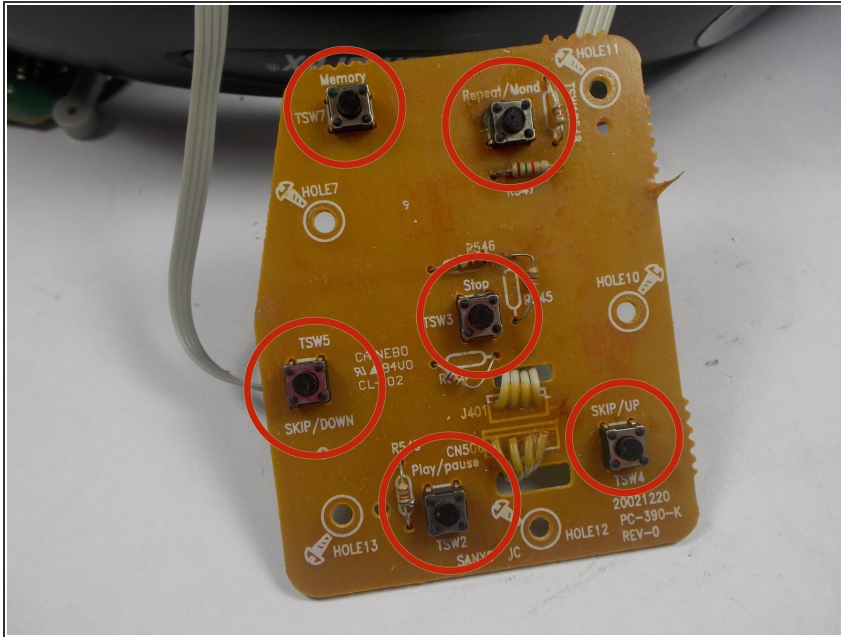
- The circuit board that contains the function buttons is located to the left of the boombox's main circuit board.
- ⓘ The main circuit board can optionally be removed (covered in other guides⁰ if it is too difficult to access the board containing the function buttons. However, we do not recommend doing this if it is not necessary since removing the main board is difficult.

Step 5



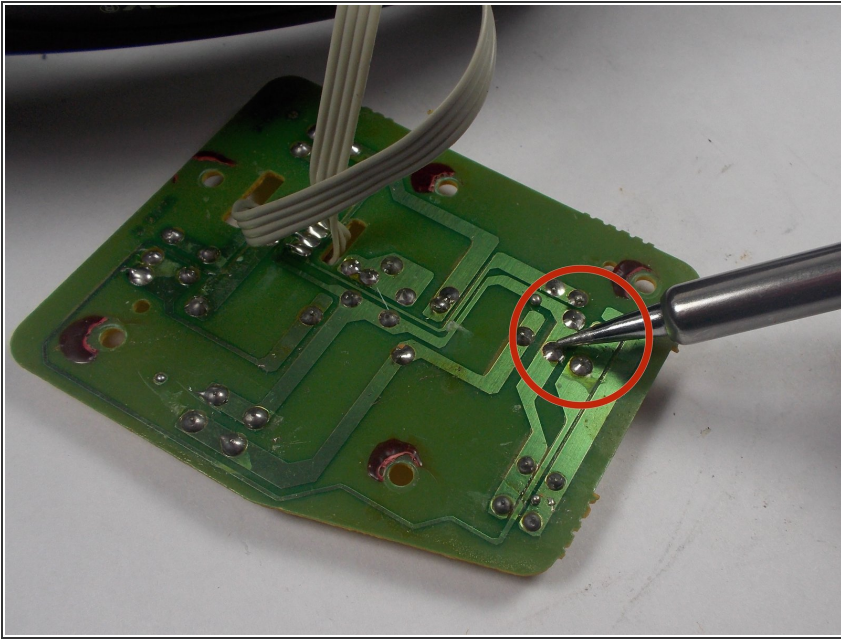
- There are a total of four screws holding the function button circuit board onto the outer shell of the boombox.
- Remove the four screws using a Phillips-head screwdriver and gently pull the circuit board up from the case.
- ⚠ Be careful not to break or damage the white wires connecting the function button circuit board to the main board.

Step 6



- Remove the circuit board from the case without disconnecting the wires.
 - Flip the circuit board over so that the tan side is up (instead of the green side).
 - There are a total of six function buttons on the board which correspond to the function buttons on the outer shell. Locate the button on this board that you intend to replace.
- i** The buttons on this board all have white labels near them. This can help you identify which button to replace.

Step 7



- Once the button to replace has been identified, flip the board over so that the green side is face up.
 - Position the circuit board so that it will be easy to use a soldering iron on.
 - Heat the connections of the button to replace with the soldering iron until all solder is removed. Then pull the button from the board.
 - Replace the button with a new, working button and apply new solder with the soldering iron to the connections in back.
- ⓘ Each button has a total of four connectors to remove/solder.
- ⚠ Ensure that the old solder is completely removed from the board to prevent any electrical shorts when the new button is connected.

To reassemble your device, follow these instructions in reverse order.