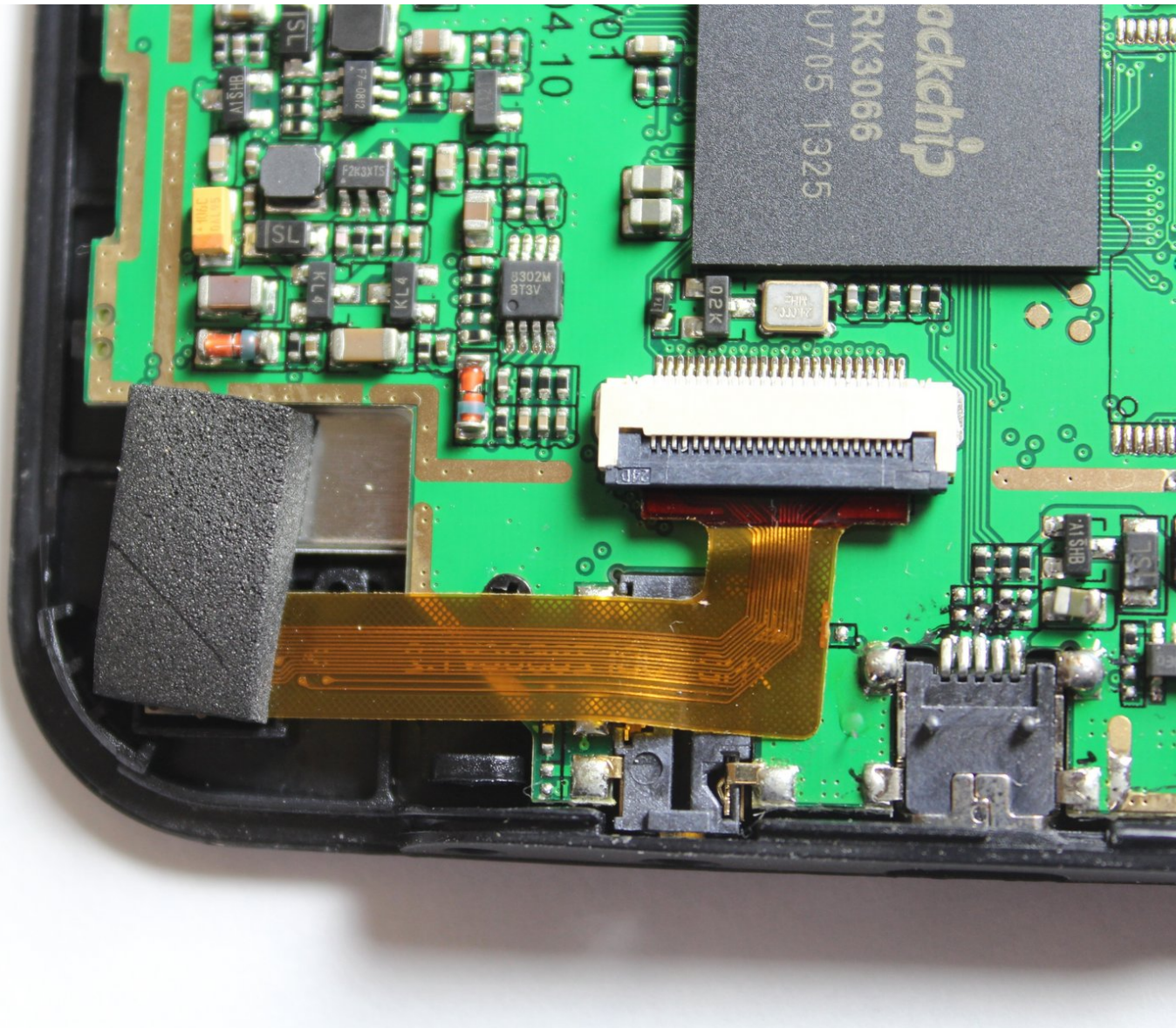




Visual Land Prestige Pro 7D Camera Replacement

Replacing a broken front-facing camera in a Visual Land Prestige Pro 7D.

Written By: Brandon Kodama



INTRODUCTION

This guide will walk you through the simple steps to replacing the front-facing camera.



TOOLS:

- [Phillips #00 Screwdriver](#) (1)
 - [iFixit Opening Tools](#) (1)
 - [Tweezers](#) (1)
-


Step 1 — Back Panel




- Unscrew the two 4.0mm Phillips head screws found near the ports at the bottom of the device using a PH #00 screwdriver.

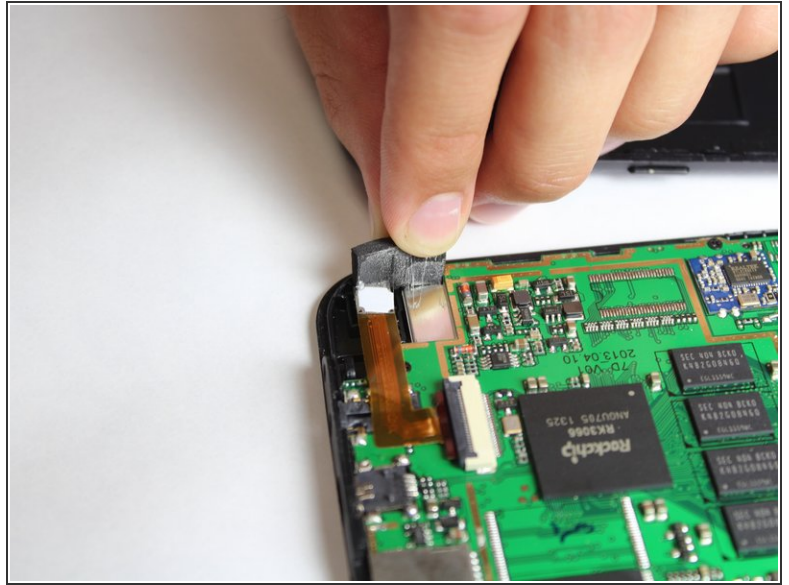
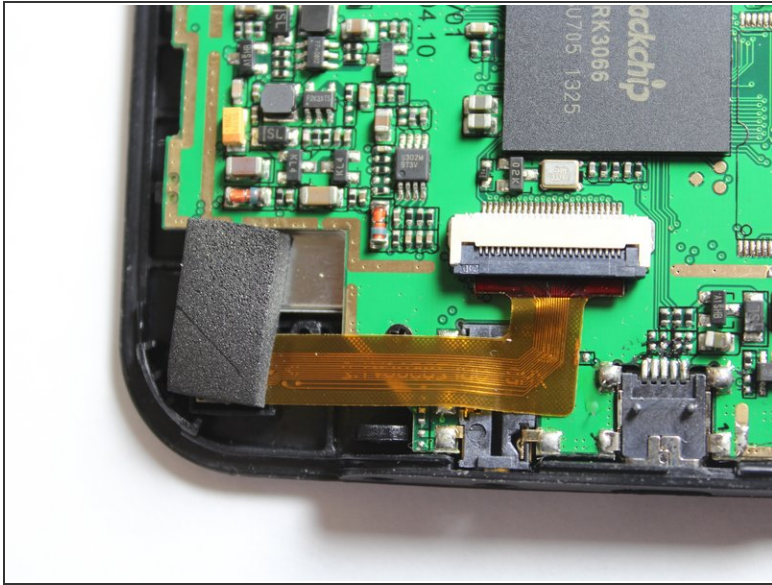
Step 2



 Be careful when taking the back panel off. The speaker is connected to both the front and back panels, and may get pulled out if you are not gentle when lifting the back panel away.

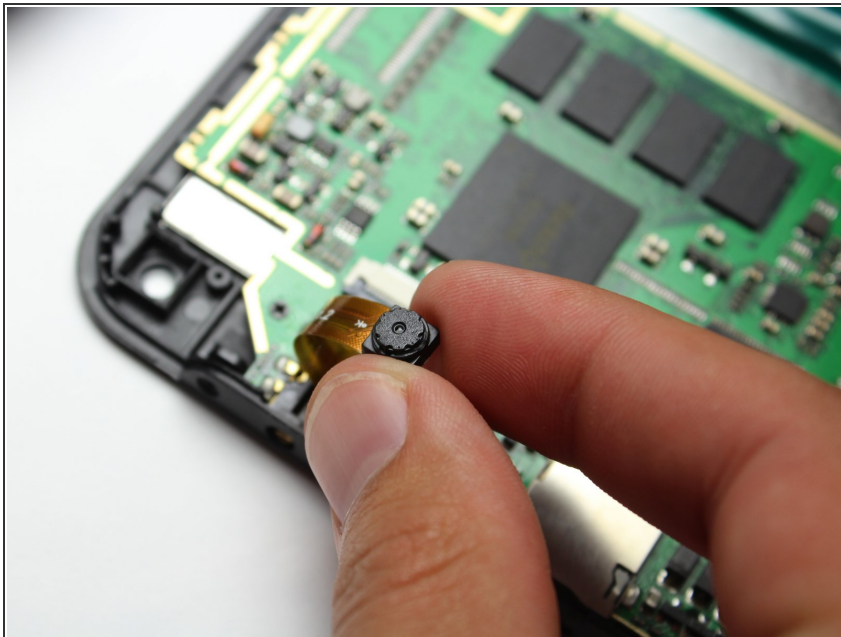
- Slide the plastic prying tool in between the front and back panel and pry them apart on all 4 sides.
 - It may be easiest to start on one of the sides, and work your way around the device. The bottom, with the ports, is the most difficult side and can be saved for last.
-  There are small latches that make this difficult. Moderate force may be required to separate the two panels.

Step 3 — Front-Facing Camera



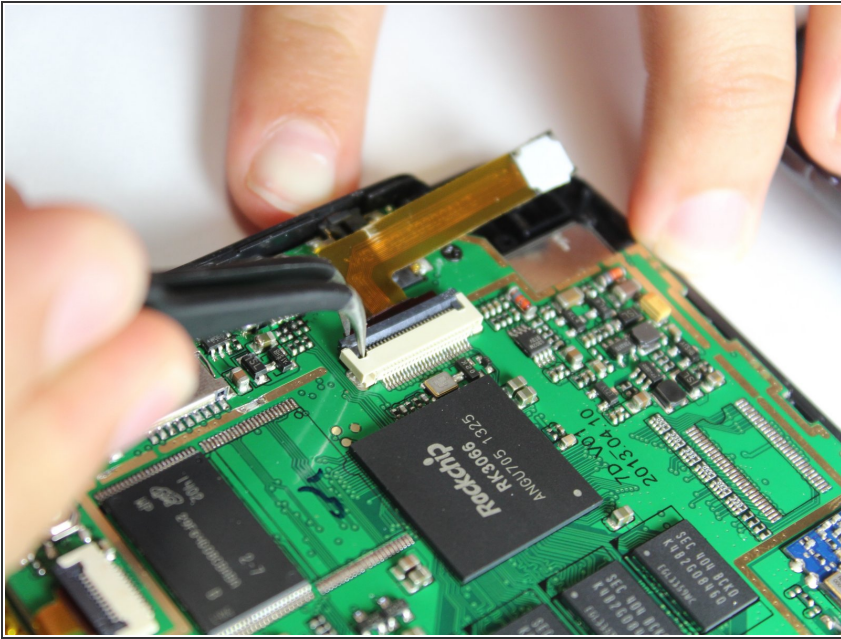
- Remove the black pad on the back of the camera by peeling it off.

Step 4



- With the bottom of the device facing away from you, pull the camera out of its black housing.
- ⓘ The camera will come right out when you lift with your fingers.

Step 5



- Use the tweezers to lift the grey connector, connecting the camera ribbon to the circuit board, up from the beige housing. It should rotate up, and allow you to slide the ribbon out from under the connector.

To reassemble your device, follow these instructions in reverse order.