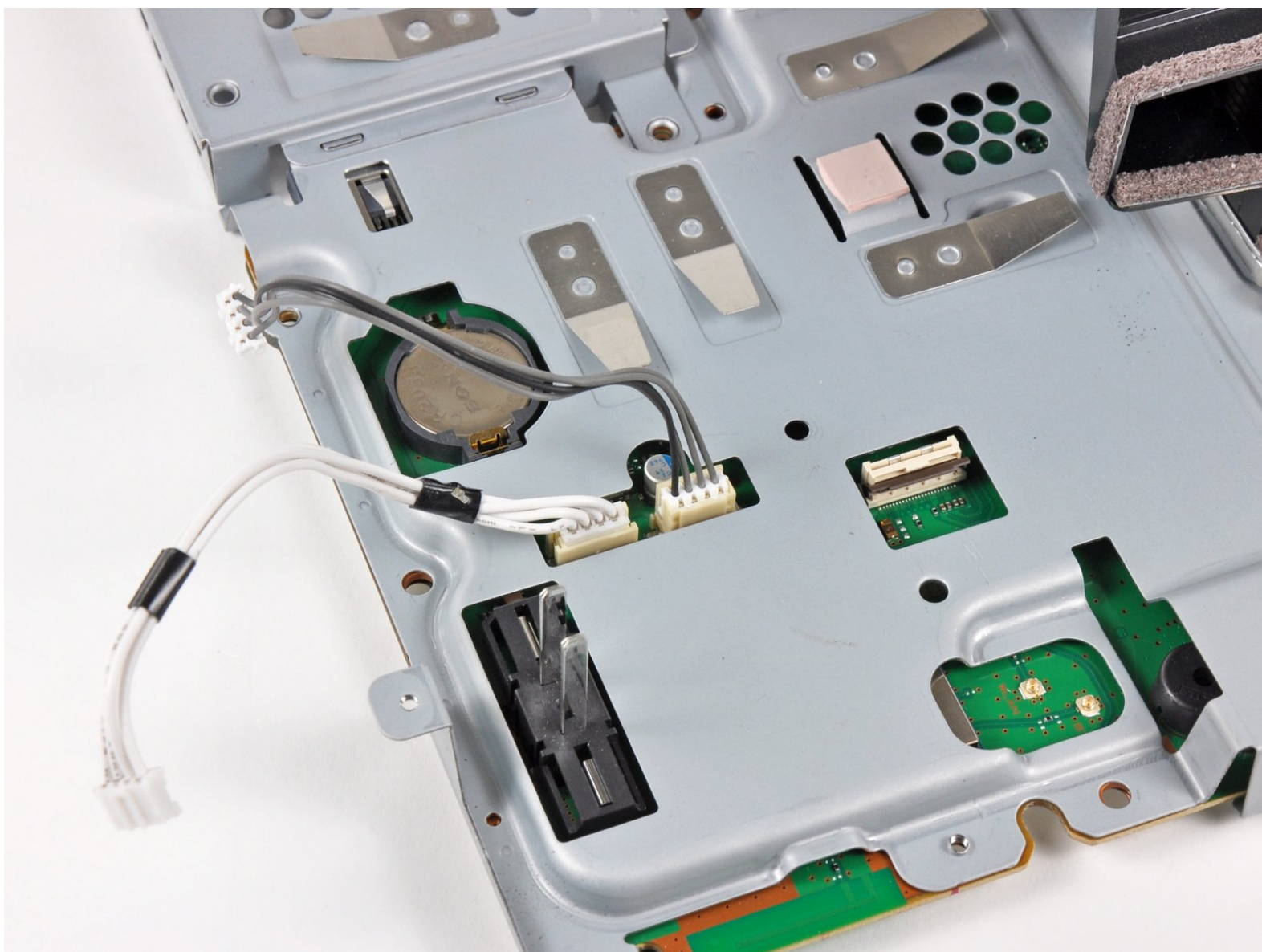




# PlayStation 3 Slim Top Shield Assembly Replacement

Written By: Andrew Bookholt

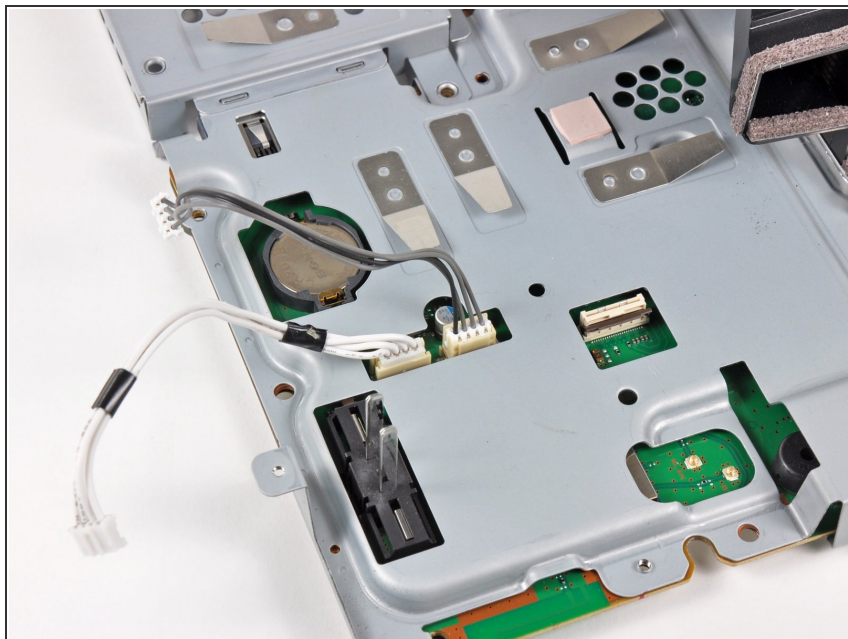




## TOOLS:

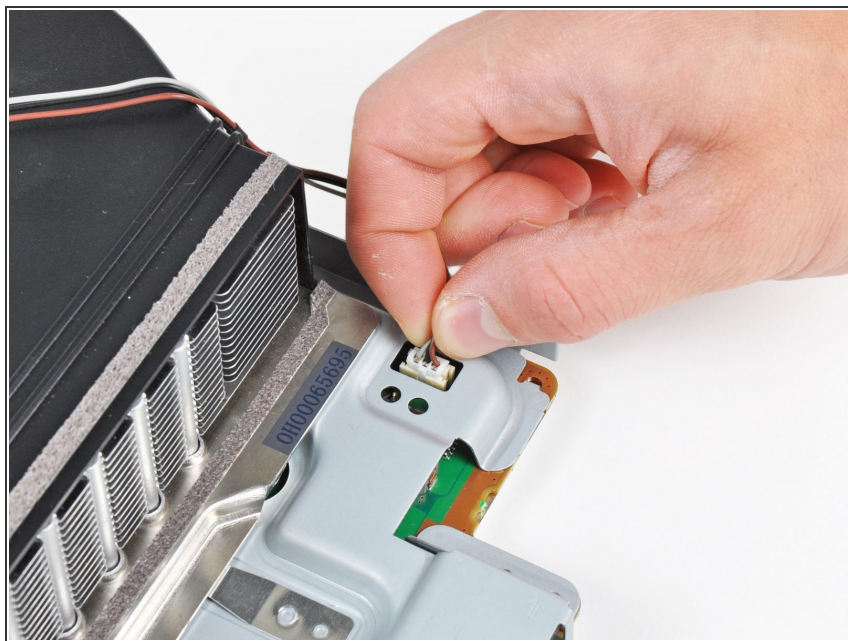
- [Phillips #0 Screwdriver](#) (1)
-

## Step 1 — Top Shield Assembly



- Disconnect the DC-In and Blu-ray power cables from the motherboard.
- ⓘ Pull the cables straight upward to lift the connectors up and out of their sockets on the motherboard.

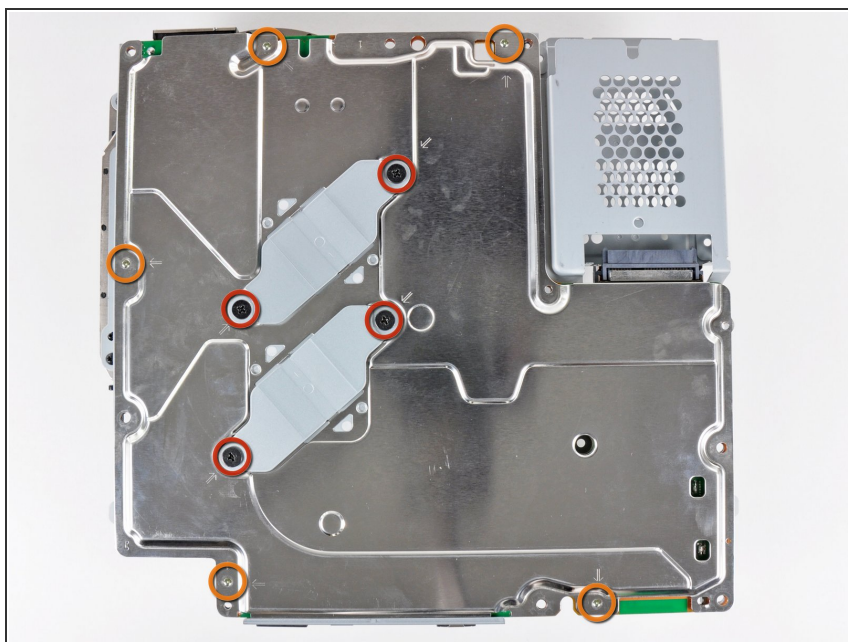
## Step 2



- Pull the fan cables straight up to lift the fan connector up and out of its socket on the motherboard.

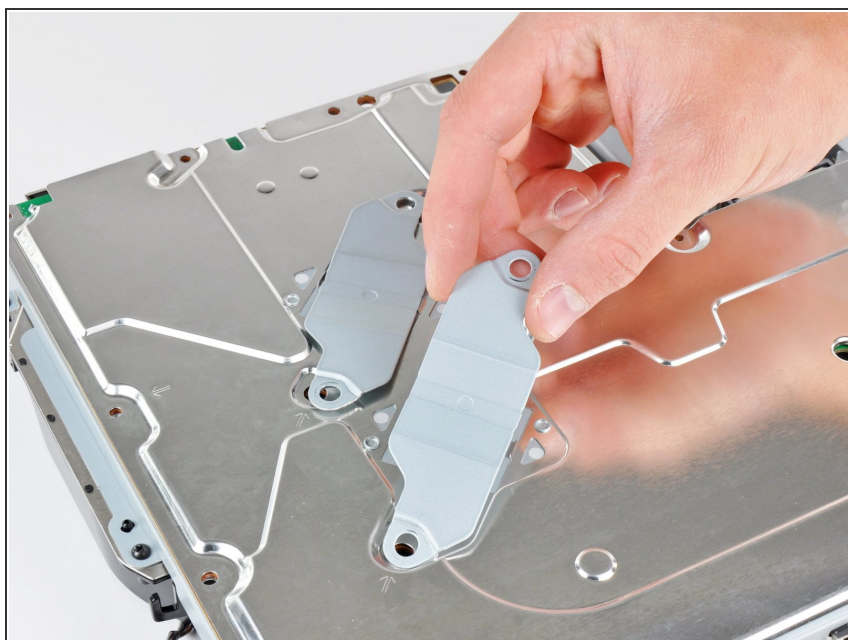


### Step 3



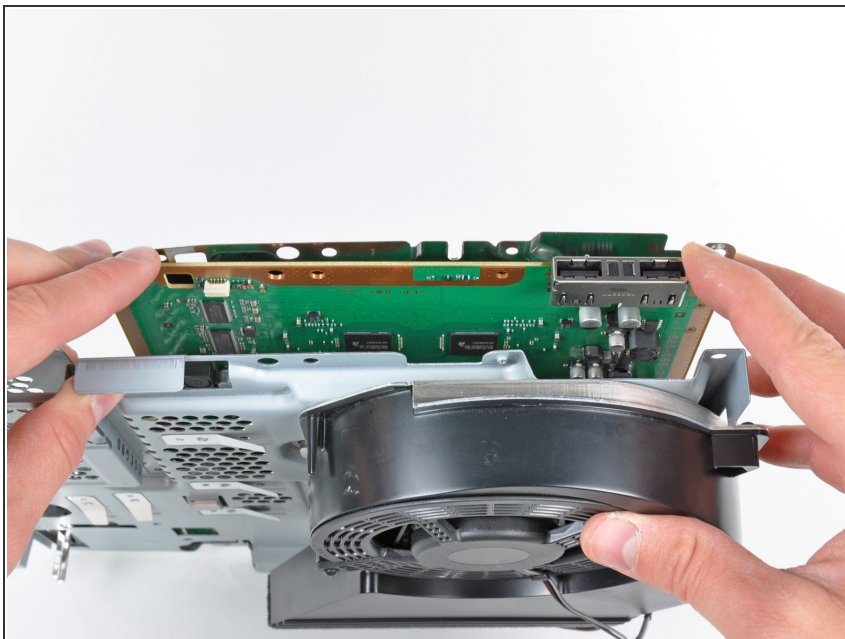
- Remove the following nine screws holding the motherboard assembly together:
  - Four 14.8 mm shouldered Phillips
  - Five 9.5 mm Phillips

### Step 4



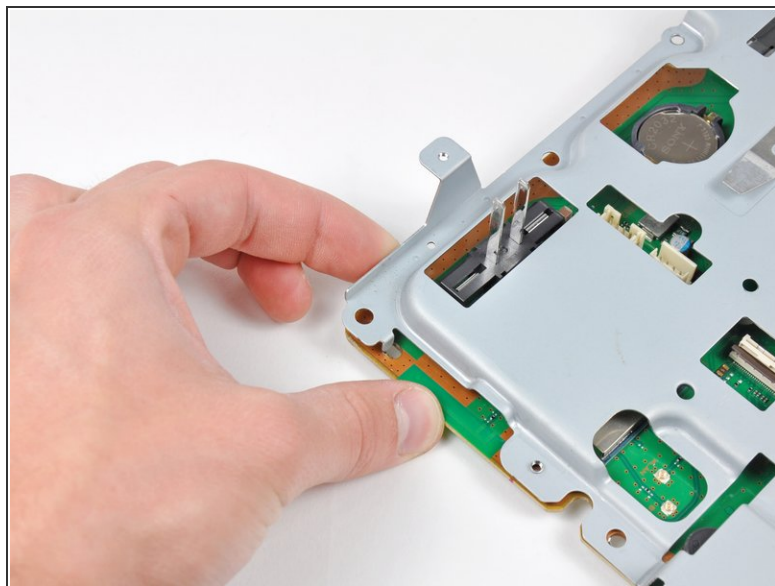
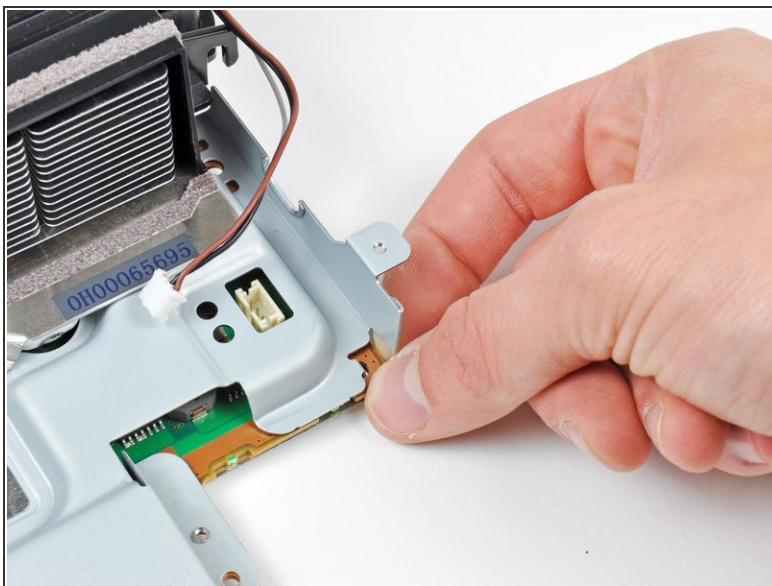
- Remove the two heat sink clamps from the bottom of the motherboard assembly.

## Step 5



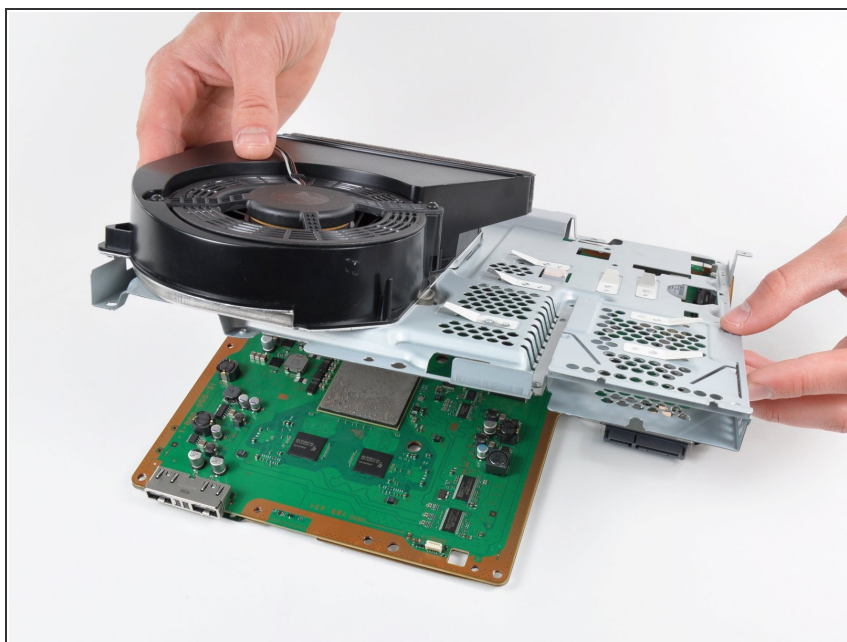
- i** If necessary, gently pry the motherboard off the top shield near the heat sink and its shroud.

## Step 6



- Gently press the board away from the top shield assembly near the fan connector and the corner of the board near the wireless sockets.

## Step 7



- Lift the top shield assembly off the motherboard from its front edge.
- ⚠ Be careful not to damage the sockets as you rotate the top shield assembly away from the motherboard.

To reassemble your device, follow these instructions in reverse order.