



# Nokia Lumia 635 Rear Facing Camera Replacement

How to replace camera of your Nokia Lumia 635

Written By: Alexa



---

## INTRODUCTION

This guide serves the purpose of replacing the Nokia Lumia 635 camera when the user (you) cannot access the application on your phone.

---

### TOOLS:

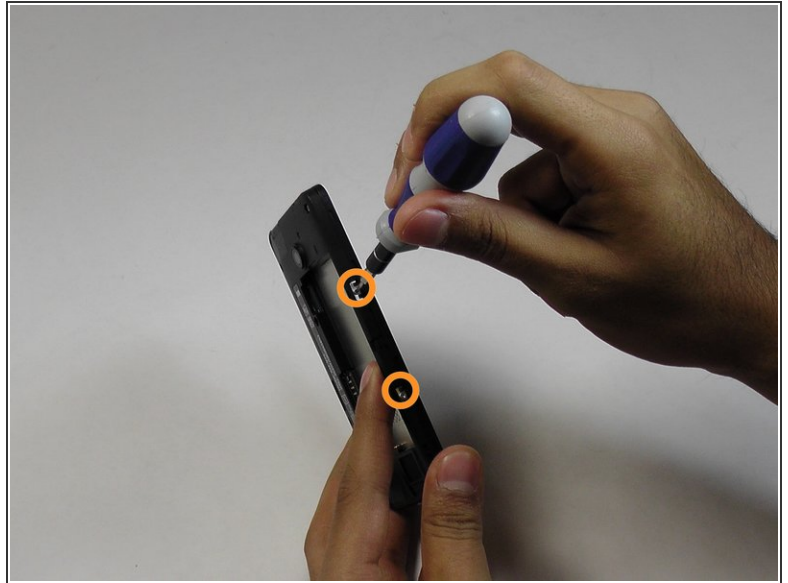
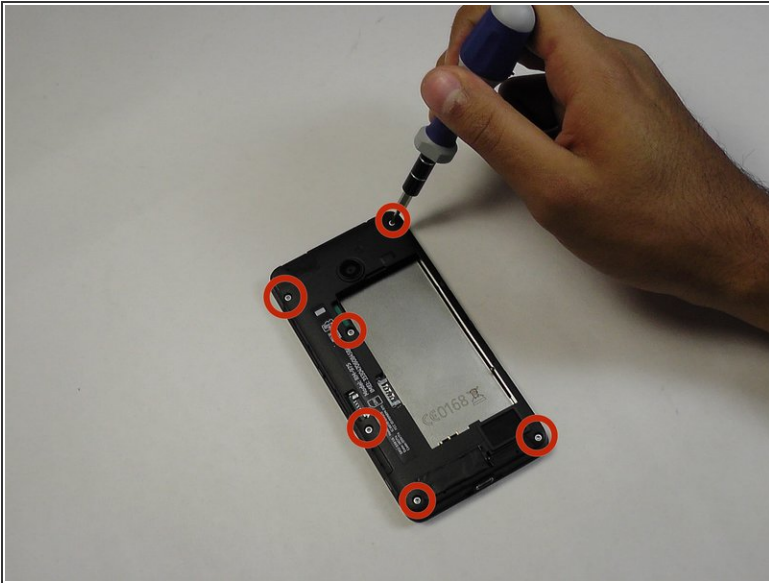
- [T5 Torx Screwdriver](#) (1)
  - [iFixit Opening Tools](#) (1)
-

## Step 1 — Get Started - Open phone case



- Open the back case of the phone using the plastic opening tool.
- Remove the battery.

## Step 2 — Screw removal



- Remove the six screws shown in the photo using the torx Screwdriver 5mm.
- Turn your phone sideways and you will find two more screws that you will need to remove using the Torx Screwdriver 5mm.

## Step 3 — Remove hidden screw



- Remove the black sticker on the bottom left side (As shown in the picture).
- Remove the screw that was under the black sticker using the Torx Screwdriver 5mm.

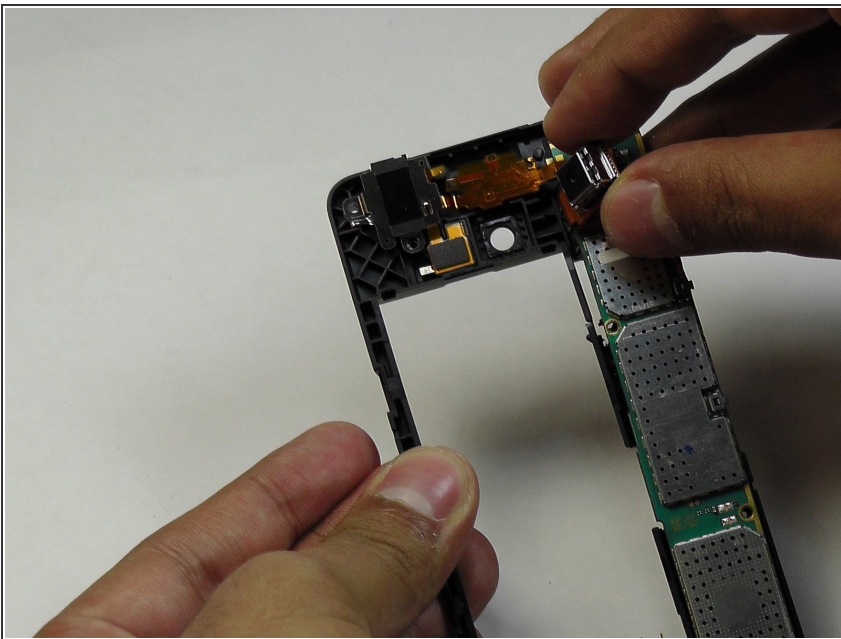


## Step 4 — Separating Back Cover From Screen



- Using the plastic opening tool separate the plastic cover from the screen.
- On the top left corner you will see the screens flex attached to the mother bothered, watch out when separating them.

## Step 5 — Camera Replacement



- Carefully retrieve the cameras flex as shown in the picture.
- Attach the new camera's flex to the mother board.

To reassemble your device, follow these instructions in reverse order.