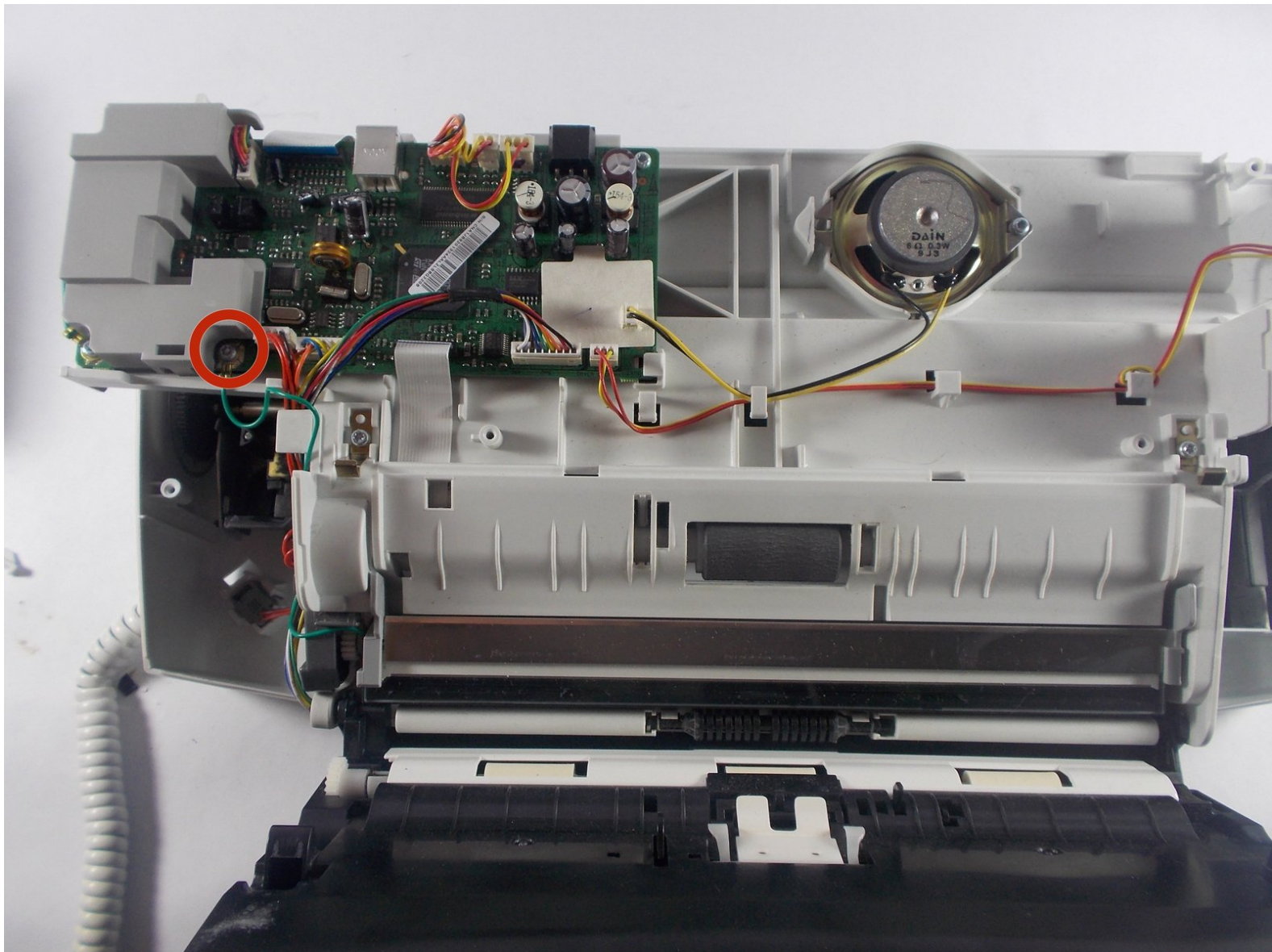




# HP Officejet J3680 Automatic Document Feeder Scanner Glass Replacement

This guide will help the users of the HP Officejet J3680 replace a malfunctioning ADF (Automatic Document Feeder) Scanner Glass.

Written By: Evan



This document was generated on 2020-11-28 04:03:42 AM (MST).

**TOOLS:**

- [T5 Torx Screwdriver](#) (1)

**PARTS:**

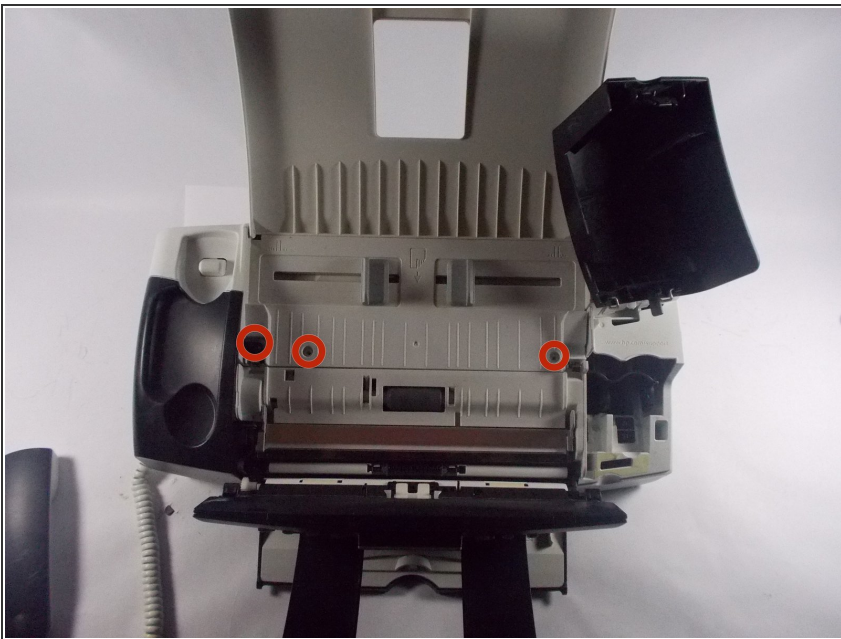
- [ADF Scanner Glass](#) (1)

## Step 1 — Unplug the Device



- Remove the plug from the outlet and from the back of the device
- Remove the USB Cable from your computer and from the back of the device.

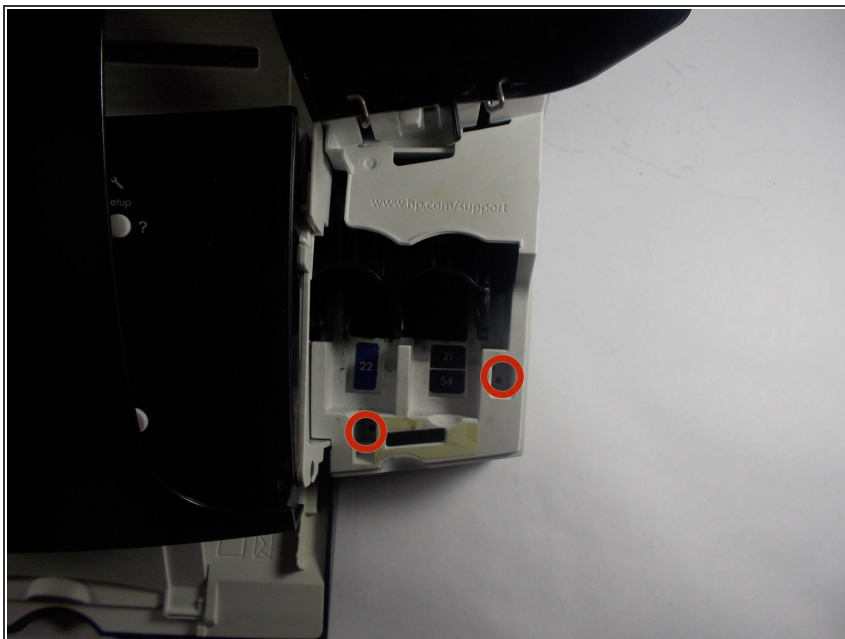
## Step 2 — Remove Screws From Under the Control Panel



- Using your Torx T10 screwdriver, remove the screws indicated in the picture. Screws are 13mm in length.



### Step 3 — Remove Screws Underneath the Ink Cartridge Cover



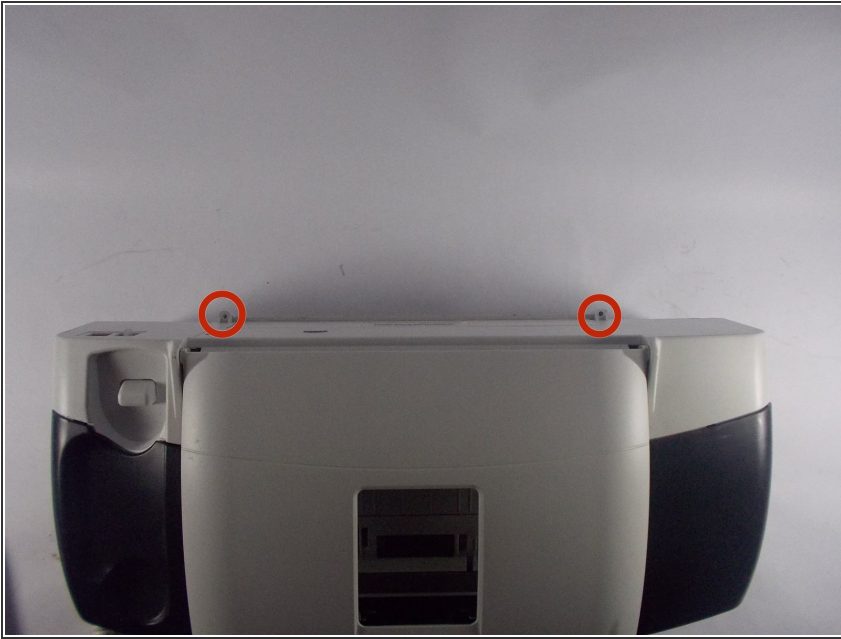
- Using your Torx T10 screwdriver, remove the screws indicated in the picture. Screws are 13mm in length

### Step 4 — Remove Screws from Underneath the Phone Panel



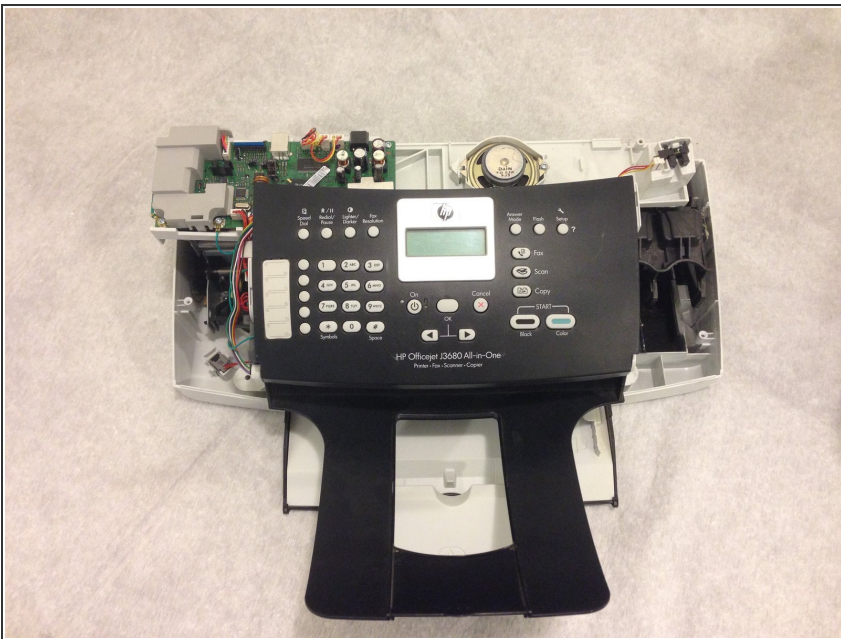
- In step 2, you removed the screw from the blue indicated area.
- Gently pop off the black cover that the phone rests on. Underneath this cover, you will find two more screws.
- Using your Torx T10 screwdriver, remove the screws indicated in the picture. Screws are 13mm in length

## Step 5 — Remove the Screws from the Rear of Device



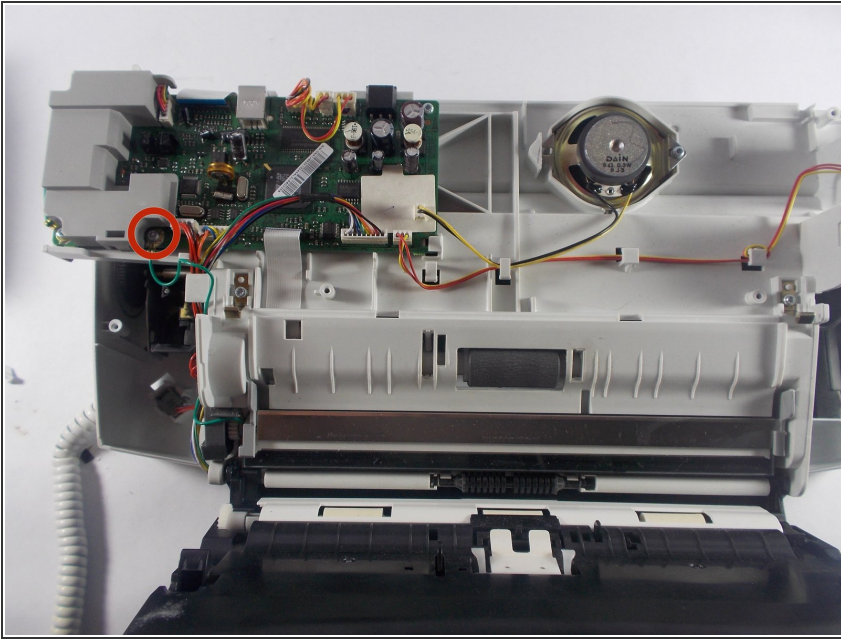
- Using your Torx T10 screwdriver, remove the screws indicated in the picture. Screws are 13mm in length.

## Step 6 — Remove Rear Plastic Panel



- Once the rear plastic panel has been removed, you are ready to replace and repair the necessary parts.

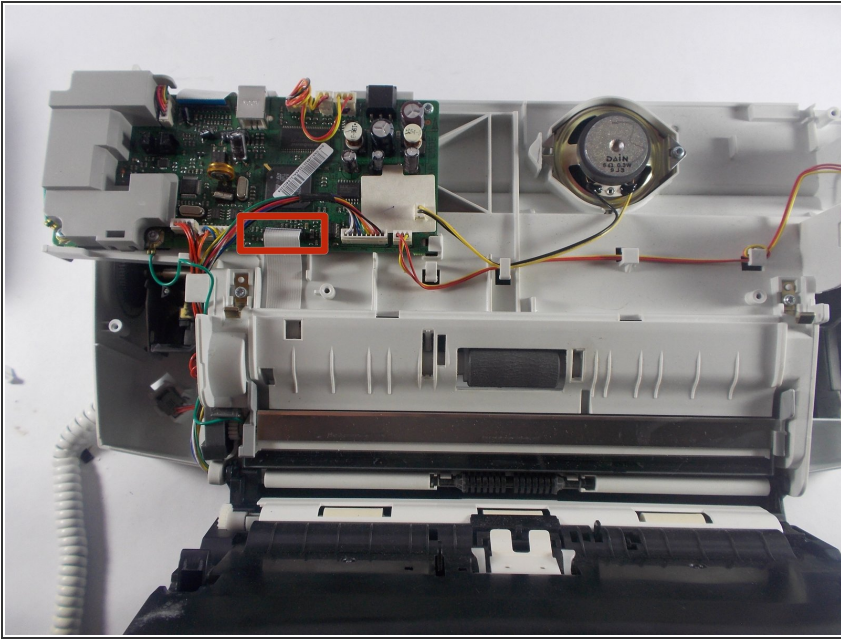
## Step 7 — Remove Green Connector from Main Motherboard



- On the left side of the ADF Scanner Glass, you will see a green wire. Follow this wire to the main motherboard. Using your Torx T10 screwdriver, remove the screw that is holding this wire to the main motherboard. The screw is 13mm in length.

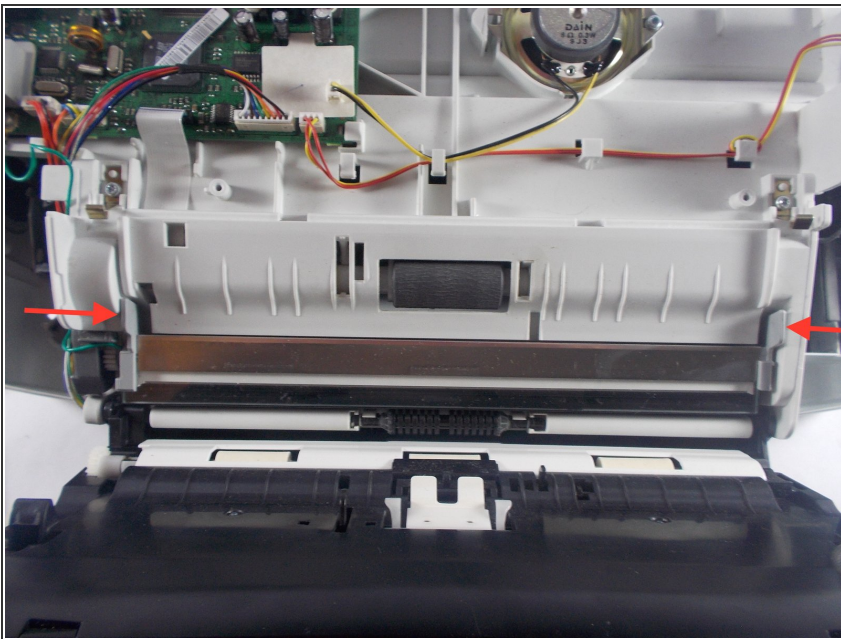


## Step 8 — Remove the White Cable from the Main Motherboard



- On the left side of the ADF Scanner Glass, you will see a white cable that leads to the main motherboard. Carefully remove this cable by pulling it straight up and out of the connector.

## Step 9 — Remove the ADF Scanner Glass



- With both cables removed from the main motherboard, carefully push the two grey tabs on the edges of the scanner glass inward (as shown by the arrows in the image). Carefully pull the scanner glass up and out from the device.
- Make sure you are aware of the green and white cables, as you do not want them to get caught on anything on the device.

## Step 10 — Repeat Steps in Reverse Order to Replace the ADF Scanner Glass



- Carefully thread the green and white cable through the device towards the main motherboard. Connect these cables back into the motherboard.
- Carefully pop the new ADF Scanner Glass back into the device.
- Replace the rear plastic panel, plug in your device, and test out the new ADF Scanner Glass.

To reassemble your device, follow these instructions in reverse order.