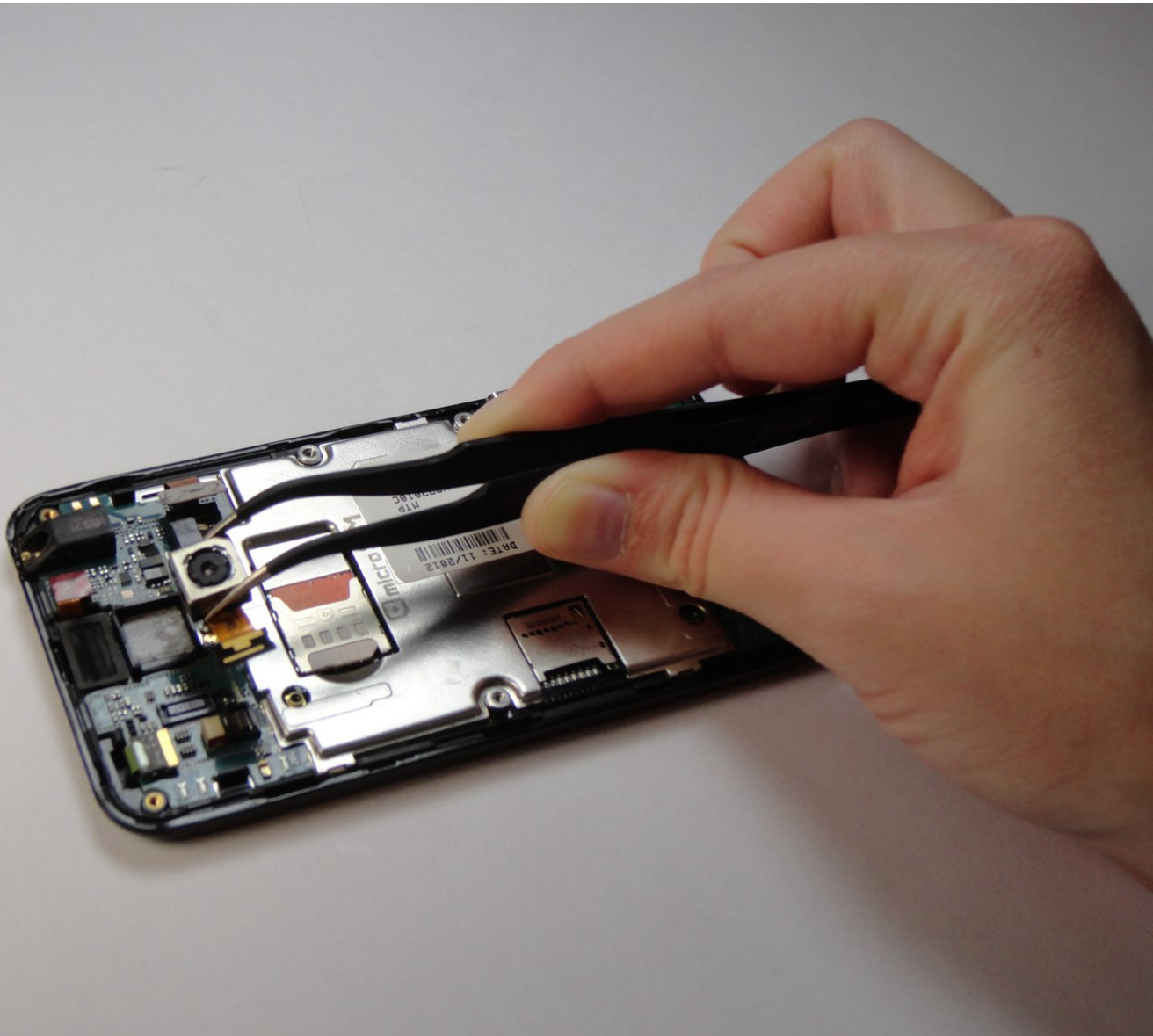




# LG Motion 4G MS770 Rear Facing Camera Replacement

Replacing the rear facing camera.

Written By: Zarna Patel



---

## INTRODUCTION

Replacing the rear facing camera that is malfunctioning or has a cracked lens and is unusable.

---



### TOOLS:

- [iFixit Opening Tools](#) (1)
  - [Phillips #00 Screwdriver](#) (1)
  - [Tweezers](#) (1)
-

## Step 1 — Remove the phone's back cover.



- Use a plastic opening tool to remove the back cover.

## Step 2 — Remove the battery.



- Use a plastic opening tool to remove the battery, lifting from the bottom right corner.

### Step 3 — Remove screws.



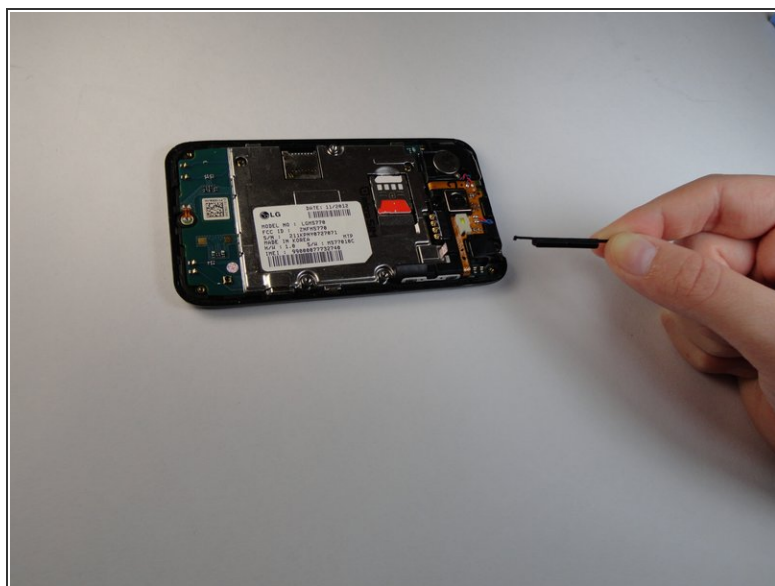
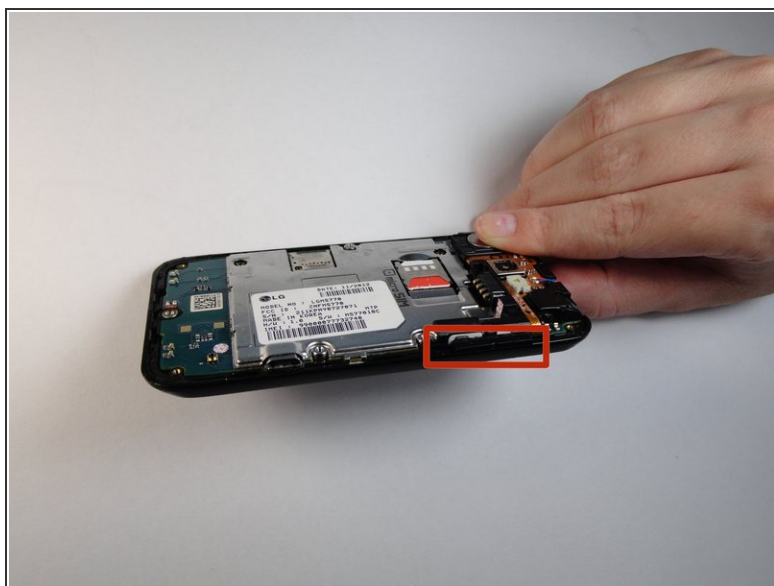
- Use a Phillips #00 Screwdriver to remove all eight 4mm screws.

### Step 4



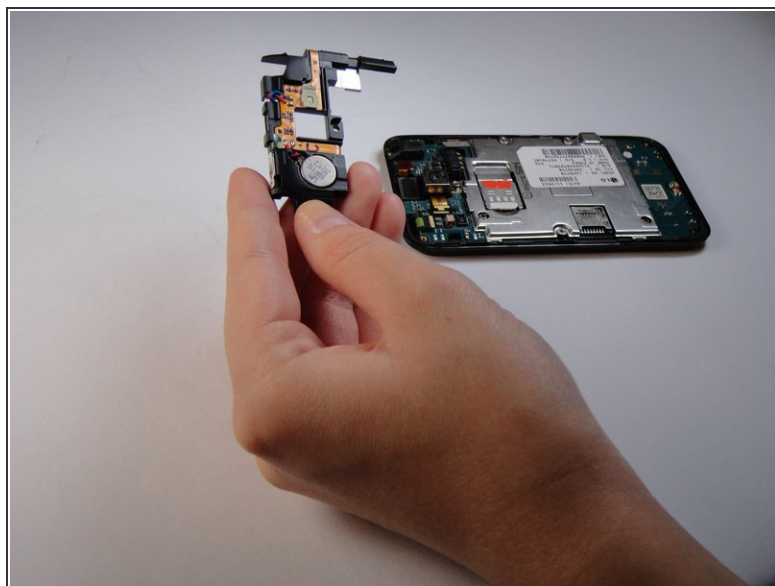
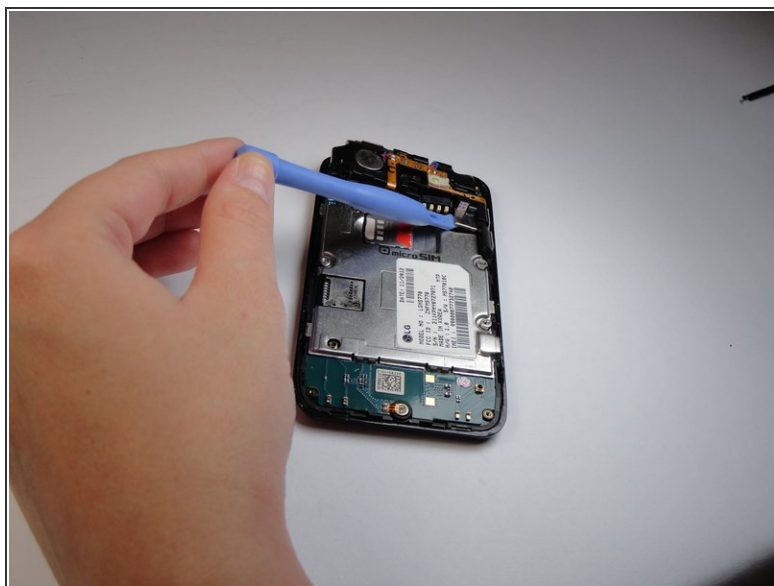
- Use a plastic opening tool to remove the back trim by working around all of the edges.

## Step 5



- Remove the volume buttons from the side.

## Step 6 — Speaker



- Use a plastic opening tool to lift the speaker off by prying under the silver square as shown.

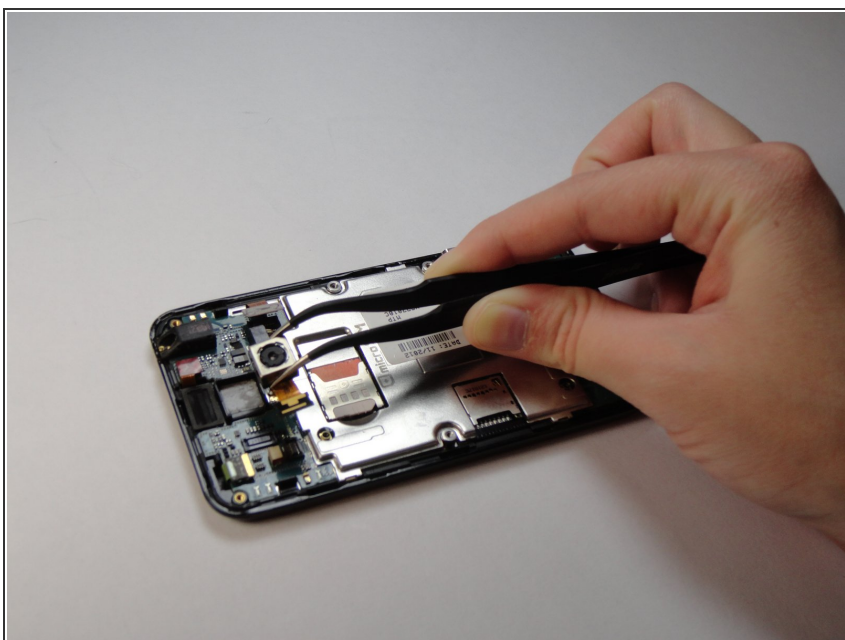
**i** Note: There is a small tab underneath the speaker that will be lifted off when the speaker is removed.

## Step 7 — Rear Facing Camera



- Pry slightly underneath the tab attached to the camera until it pops off.

## Step 8



- Use tweezers to remove the camera, you will need to use some force as it is glued on.

To reassemble your device, follow these instructions in reverse order.