



# Crayola Crayon Maker Sliding Lock Mechanism Replacement

Clear plastic sliding lock mechanism can become dislodged from proper location. This causes the device's lid not to lock.

Written By: Heidi Clarke



## INTRODUCTION

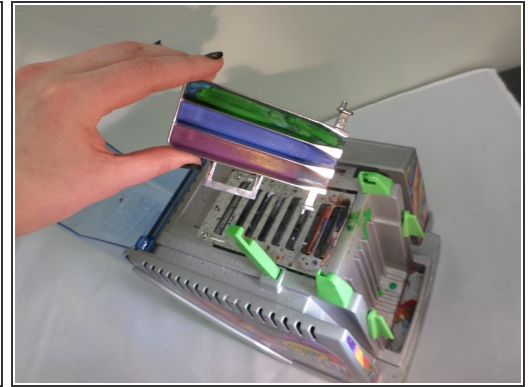
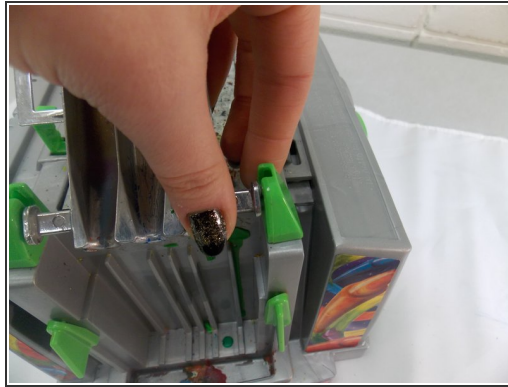
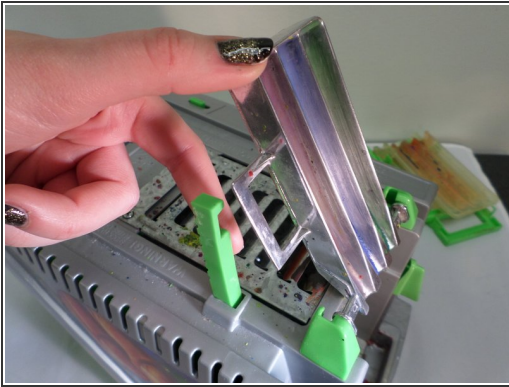
If lid is closing but not latching, read the instructions in this guide to help you determine and fix the problem.



### TOOLS:

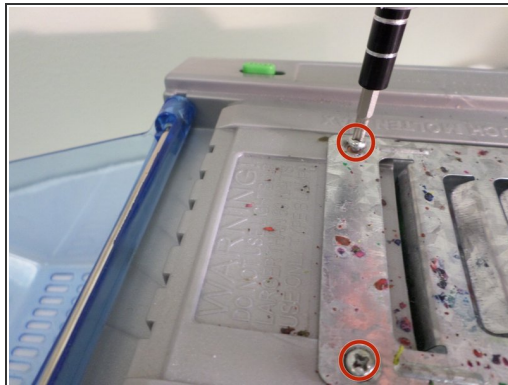
- [Phillips #2 Screwdriver](#) (1)
  - [Phillips #00 Screwdriver](#) (1)
-

## Step 1 — Take out the melting tray that is out of place.



- Press the green arm away from the melting tray. Remove the melting tray.
- Pop the metal arms out of the green pivot support.

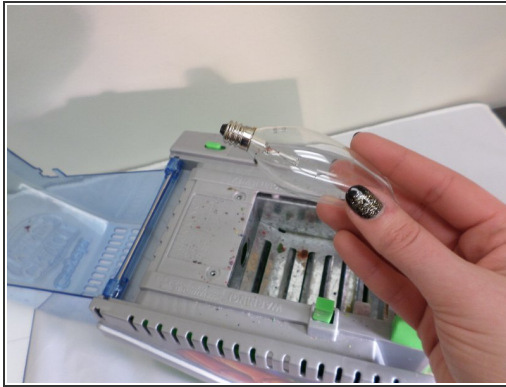
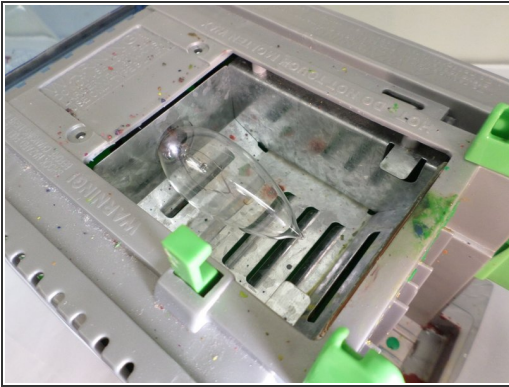
## Step 2 — Remove the metal melting tray.



- Remove the 2 screws (.75cm in length) currently securing the metal melting tray with a Phillips #2 screwdriver.

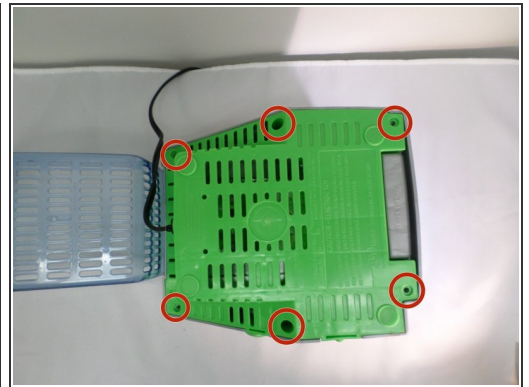
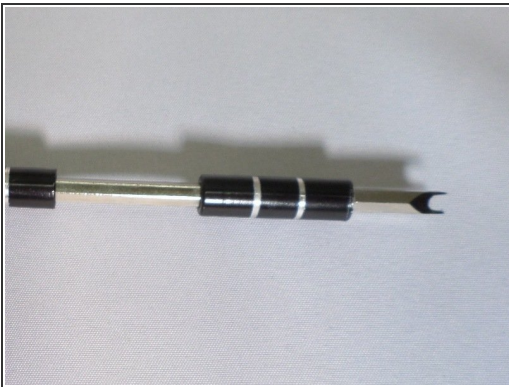


### Step 3 — Remove the light bulb



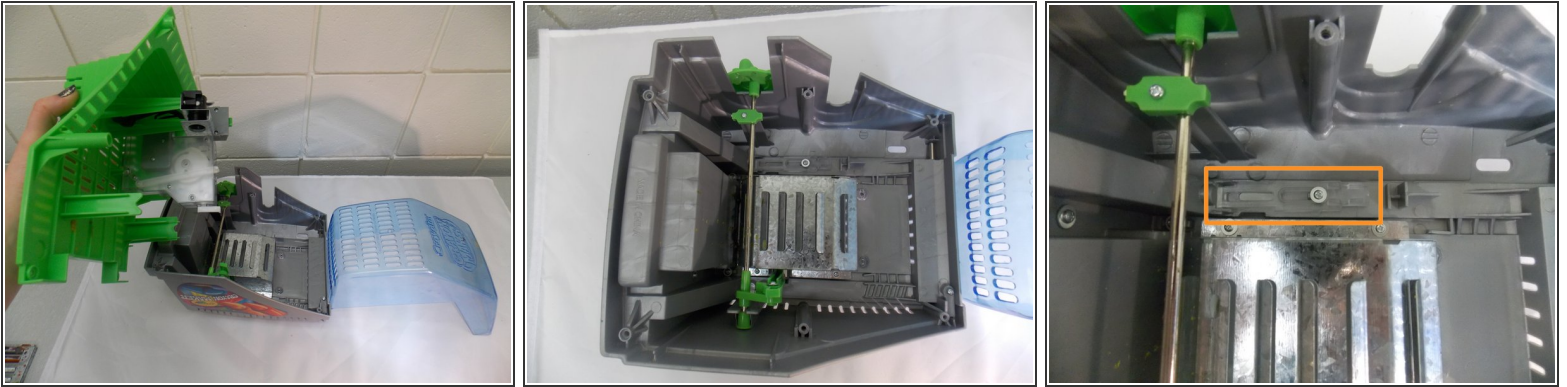
- The light bulb should now be revealed. Unscrew the burned out bulb and replace with a new bulb.

### Step 4 — Remove the green base from the crayon maker



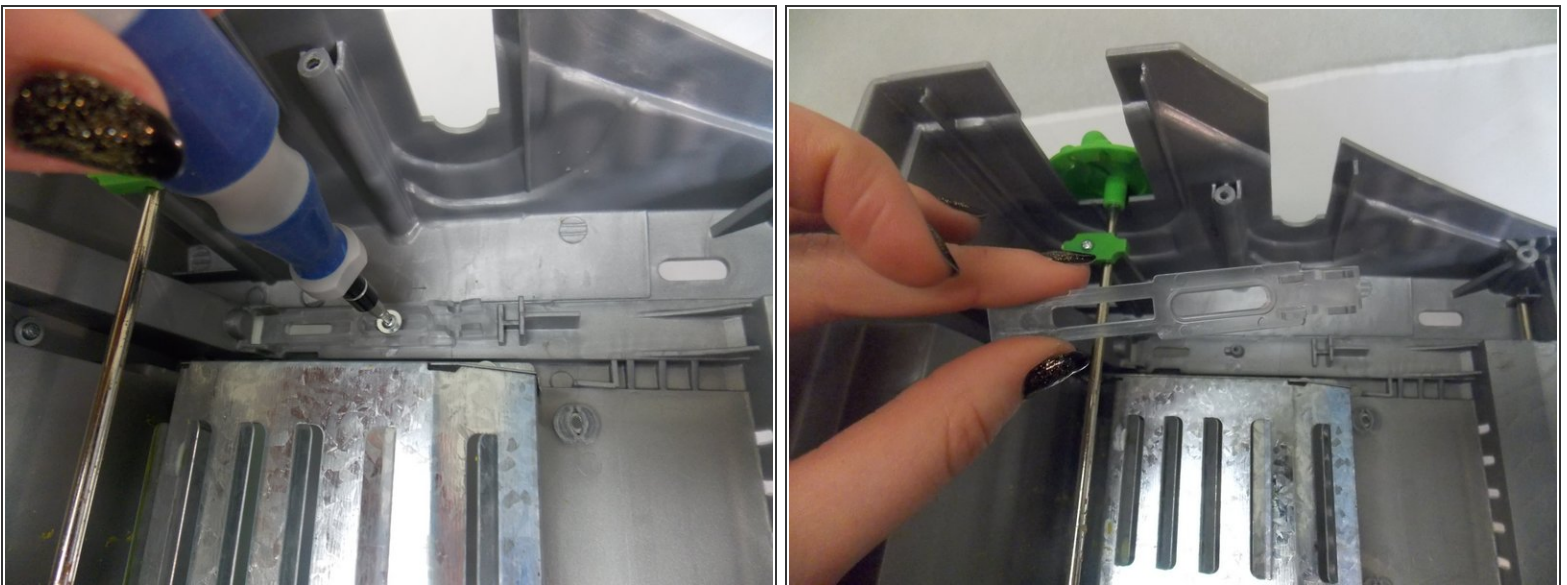
- Flip the crayon maker.
- Remove six screws (2 cm in length) with a spanner.
- Remove the green base plate and set it aside.

## Step 5 — Locate the Plastic arm



- Locate the clear plastic arm inside the control box.

## Step 6 — Adjust/Replace the Plastic Arm



- If necessary, unscrew the plastic arm with a Phillips #00 Precision screwdriver and readjust the arm until the desired position is reached.
- If the plastic arm is broken, contact Crayola for replacement parts.

To reassemble your device, follow these instructions in reverse order.