



Scotch TL901 Teardown

This guide shows the steps needed to tear down the device into its individual components.

Written By: Calvin Xu

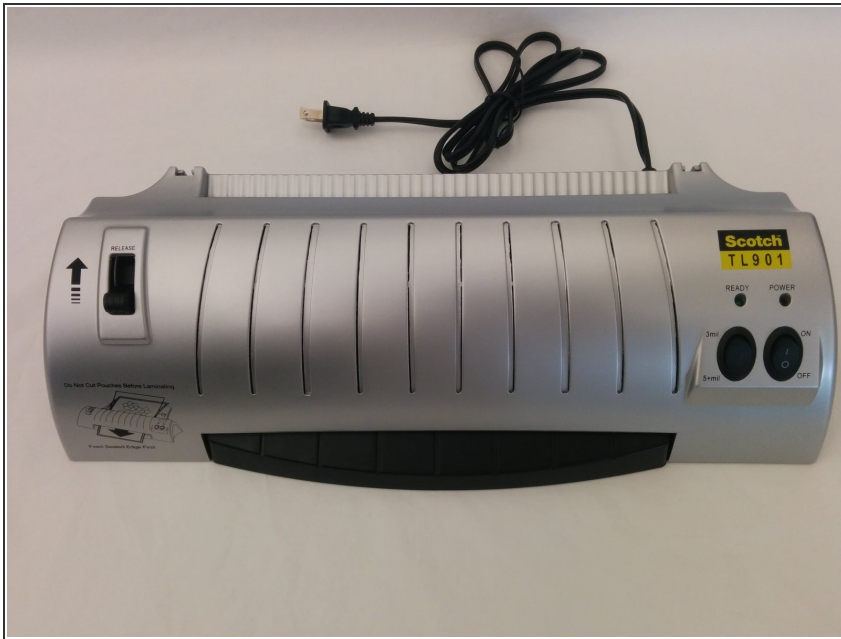




TOOLS:

- [Small Phillips Head Screwdriver](#) (1)
-

Step 1 — The Laminator



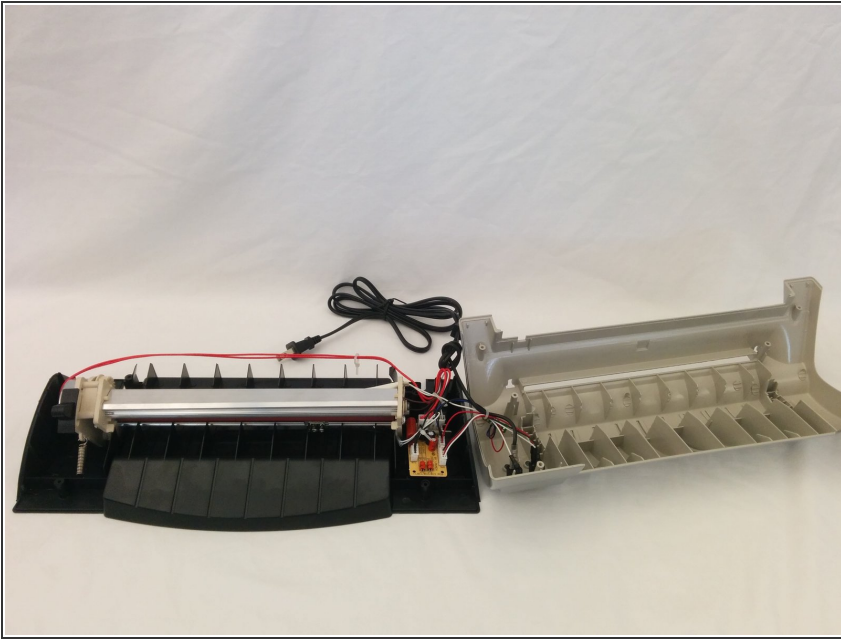
- The Scotch TL901 Laminator

Step 2 — Unscrewing the Case



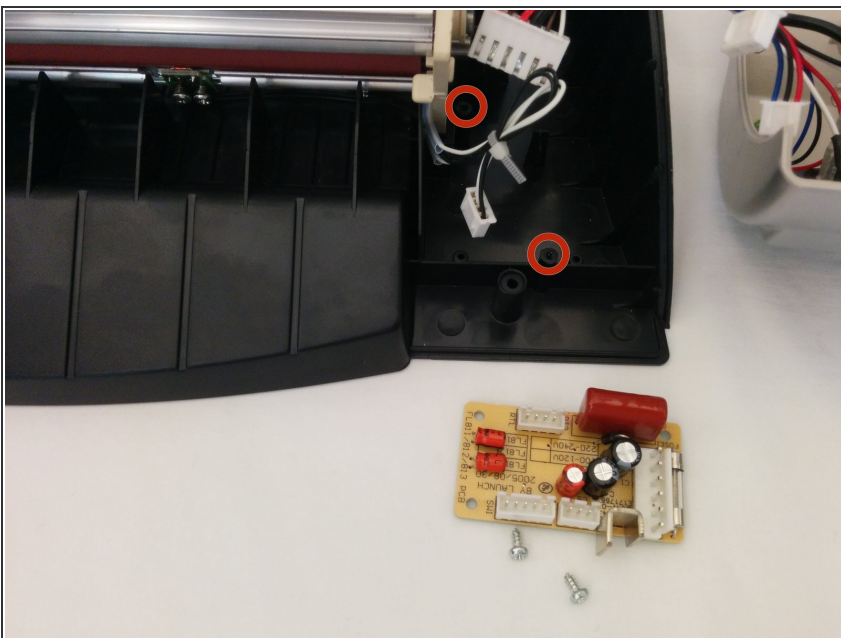
- Using a small Phillips screwdriver, remove the screws from the bottom of the plastic case.
- Rubber feet in the four corners must be removed first to gain access to the screws underneath. A sticker may also be covering the middle screw on the left.

Step 3 — The Opened Laminator



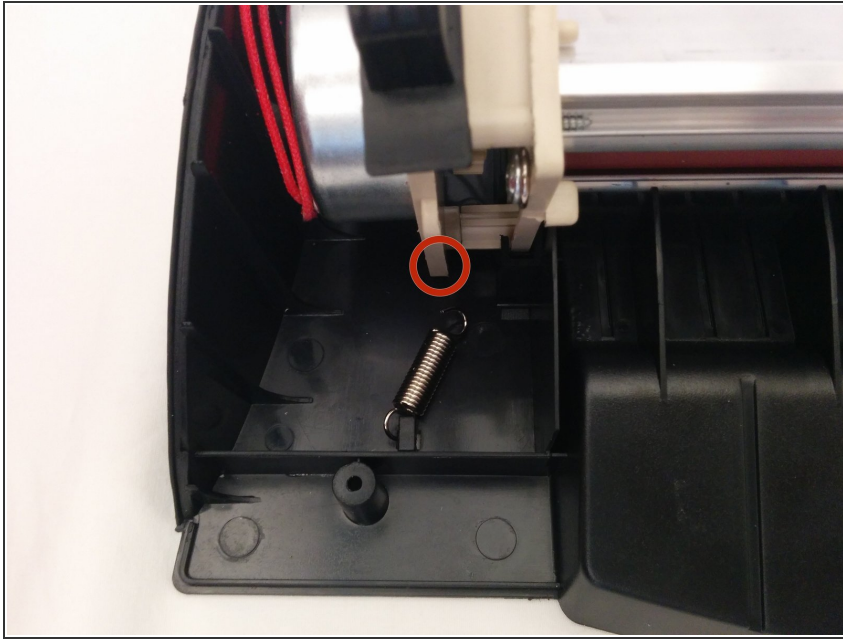
- Pull off the silver plastic cover and gain access to the internal components.
- The rollers, motor, circuit board, and LEDs are all visible now.

Step 4 — The Circuit Board



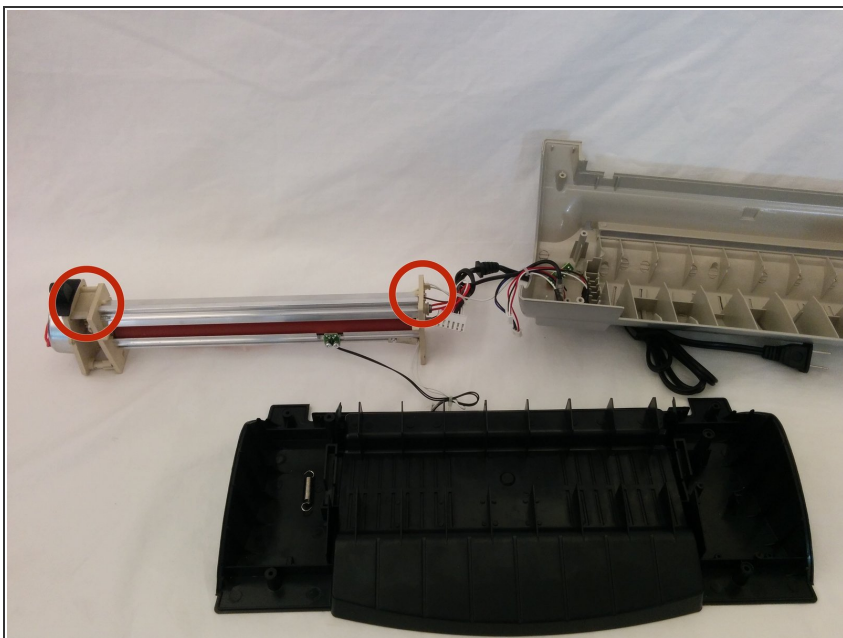
- First unplug all three wire headers connected to the circuit board.
- Unscrew the two screws holding down the circuit board by its corners and remove the board from the laminator.

Step 5 — The Spring



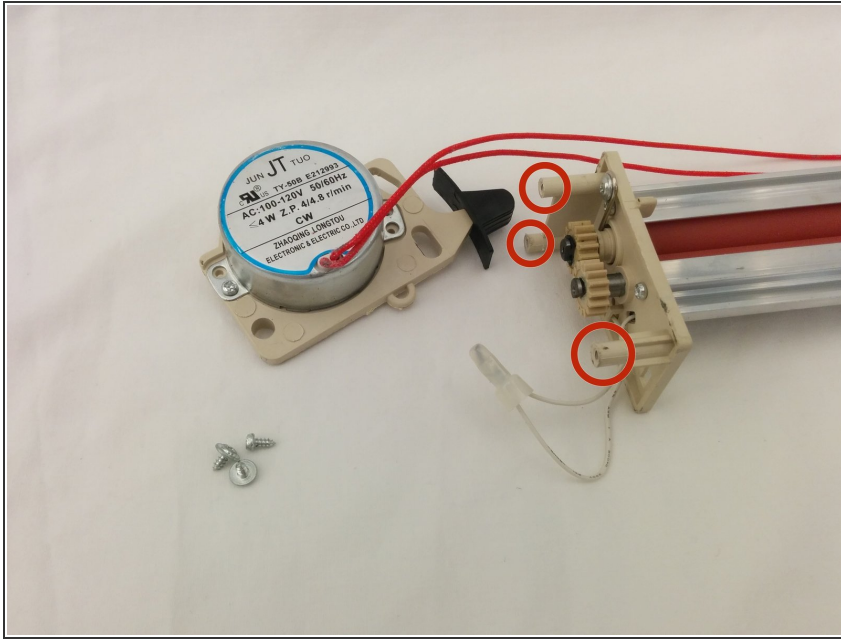
- Unhook the spring from the plastic surrounding the motor.

Step 6 — The Rollers



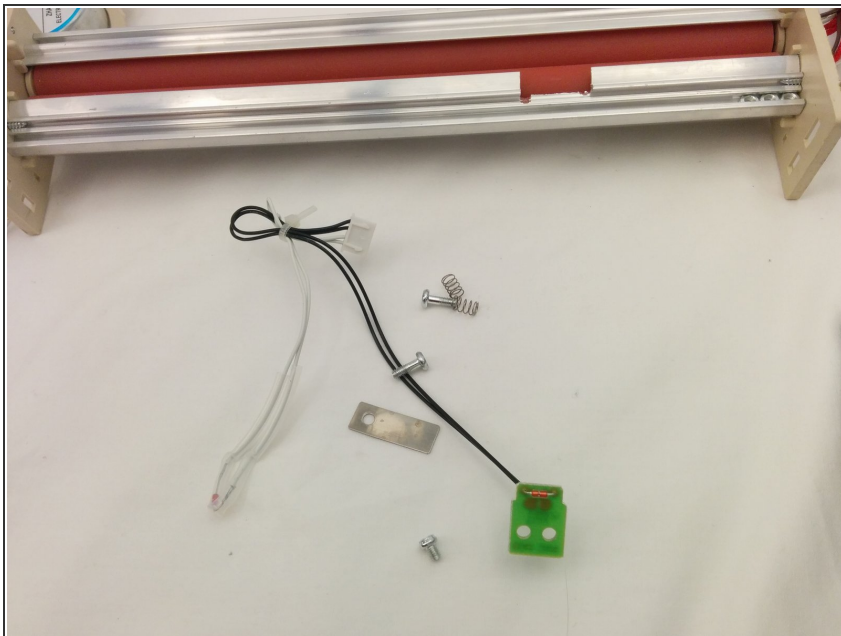
- Hold the roller enclosure from both sides, indicated by the markers, and pull upwards and slightly out.
- Free access to the motor and rollers is now possible.

Step 7 — The Motor



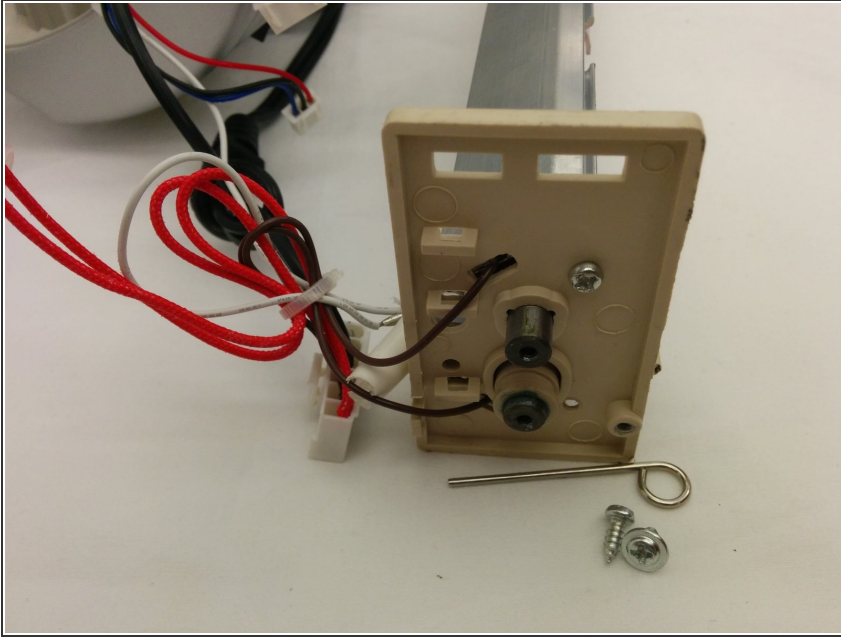
- Remove the motor from the rollers by unscrewing the three screws holding them together.

Step 8 — The Sensor



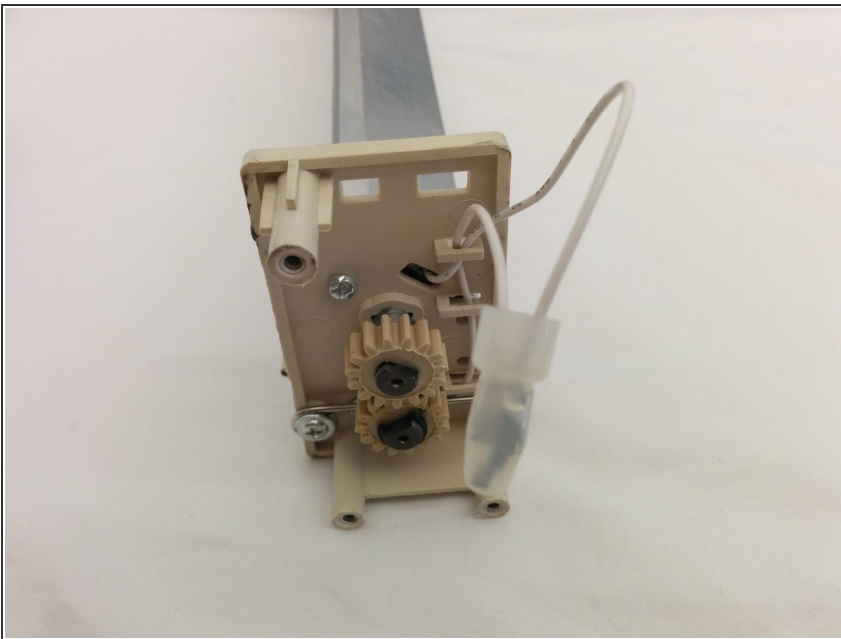
- Remove the sensor from the roller enclosure by unscrewing the two spring-loaded screws.

Step 9 — The Other Side



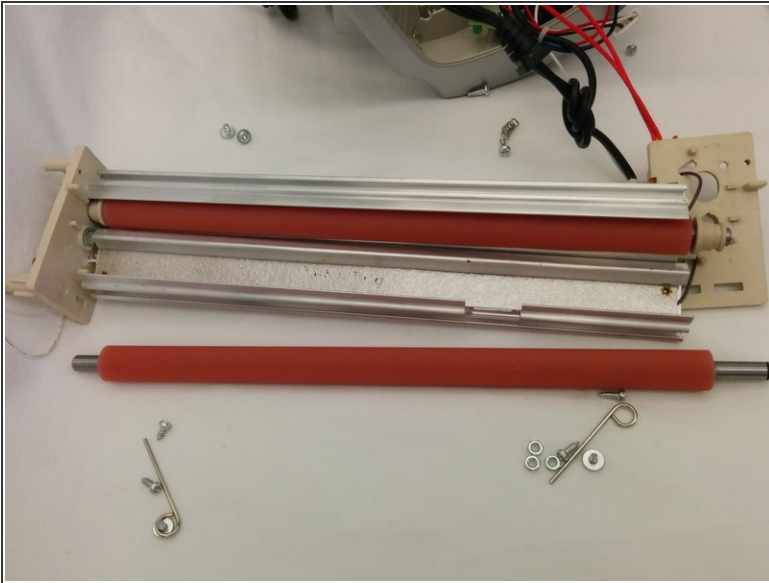
- Unscrew the two screws and the bar on the other.

Step 10 — The Gears



- Pull the black washers sideways off the metal rod of the roller.
- Pull the gears off.

Step 11 — The Disassembled Rollers



- With the gears off, the plastic panel falls off and the rollers come out of the enclosure.
- The laminator is now disassembled.

To reassemble your device, follow these instructions in reverse order.