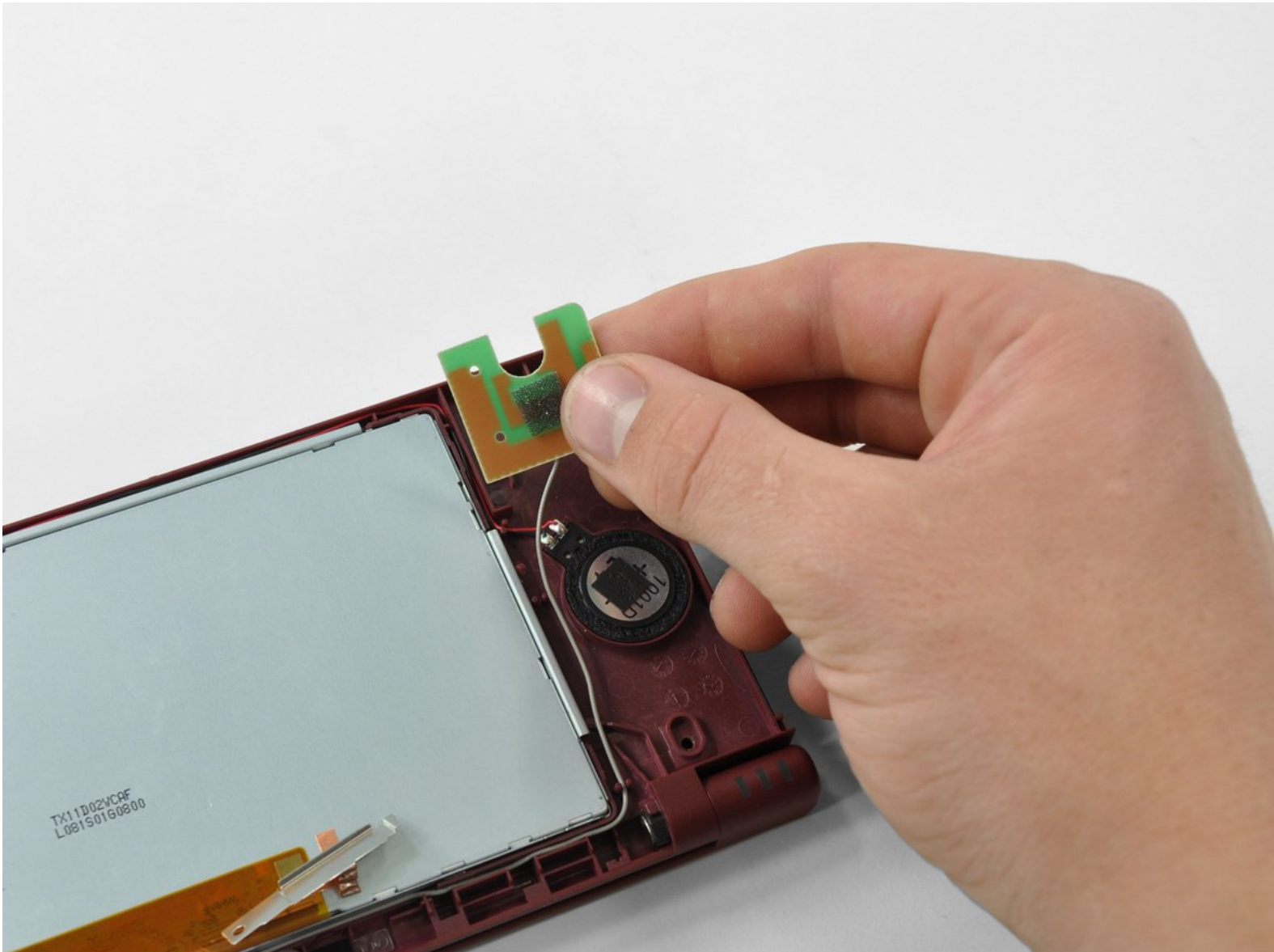




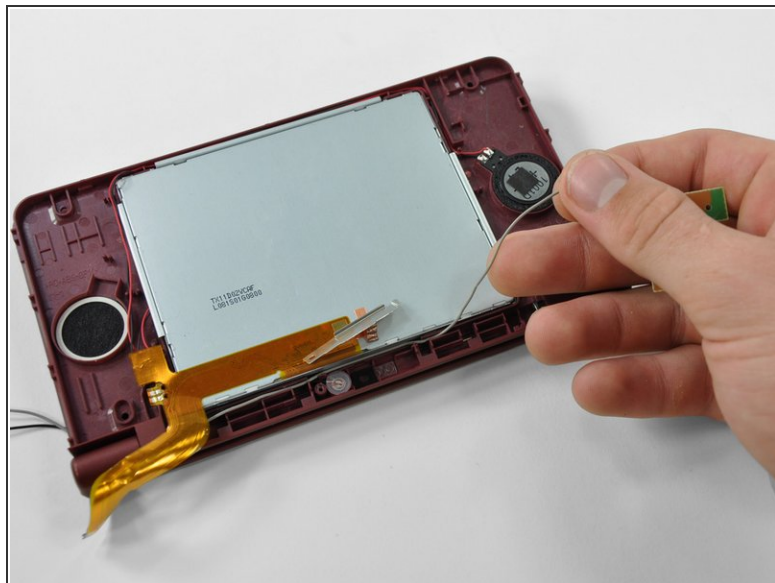
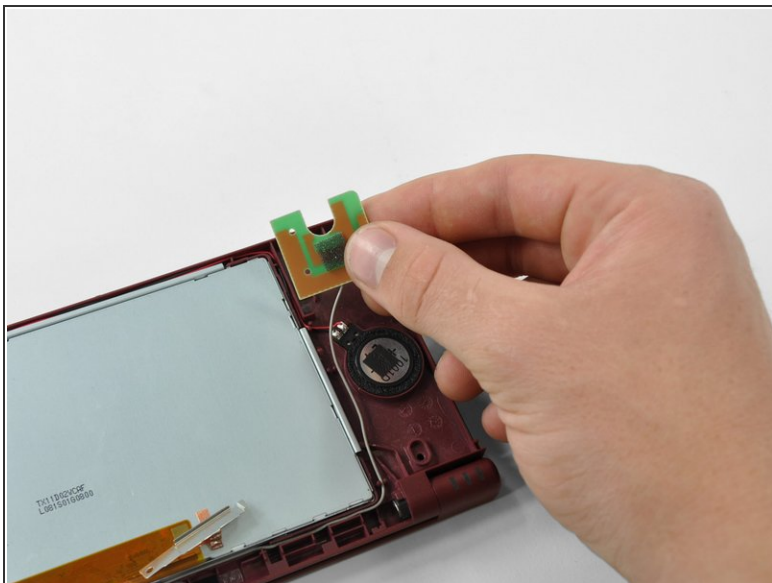
Nintendo DSi XL Wi-Fi Antenna Replacement

A prerequisite to removing the upper display assembly.

Written By: David Hodson

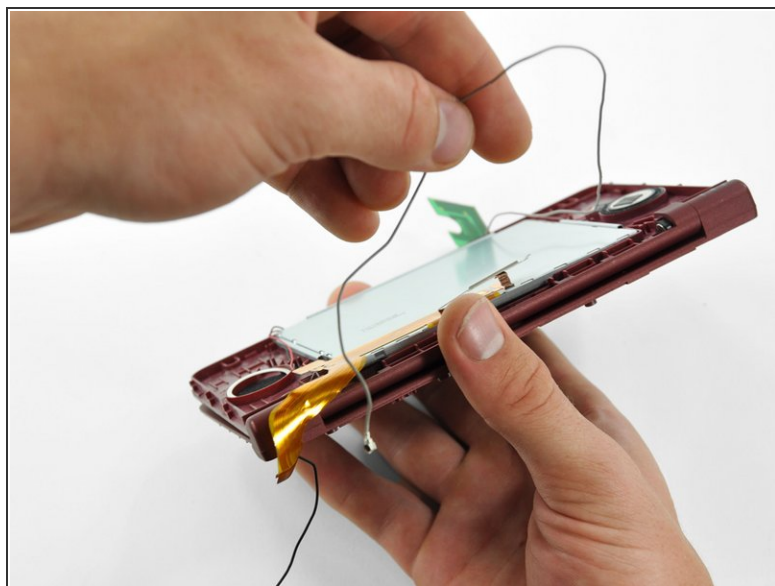


Step 1 — Wi-Fi Antenna



- Lift the Wi-Fi antenna off the front display bezel.
- De-route the Wi-Fi antenna cable from its grooves at the bottom of the front display bezel.

Step 2



- Pull the Wi-Fi antenna cable through the right hinge connecting the front bezel and upper case.

To reassemble your device, follow these instructions in reverse order.